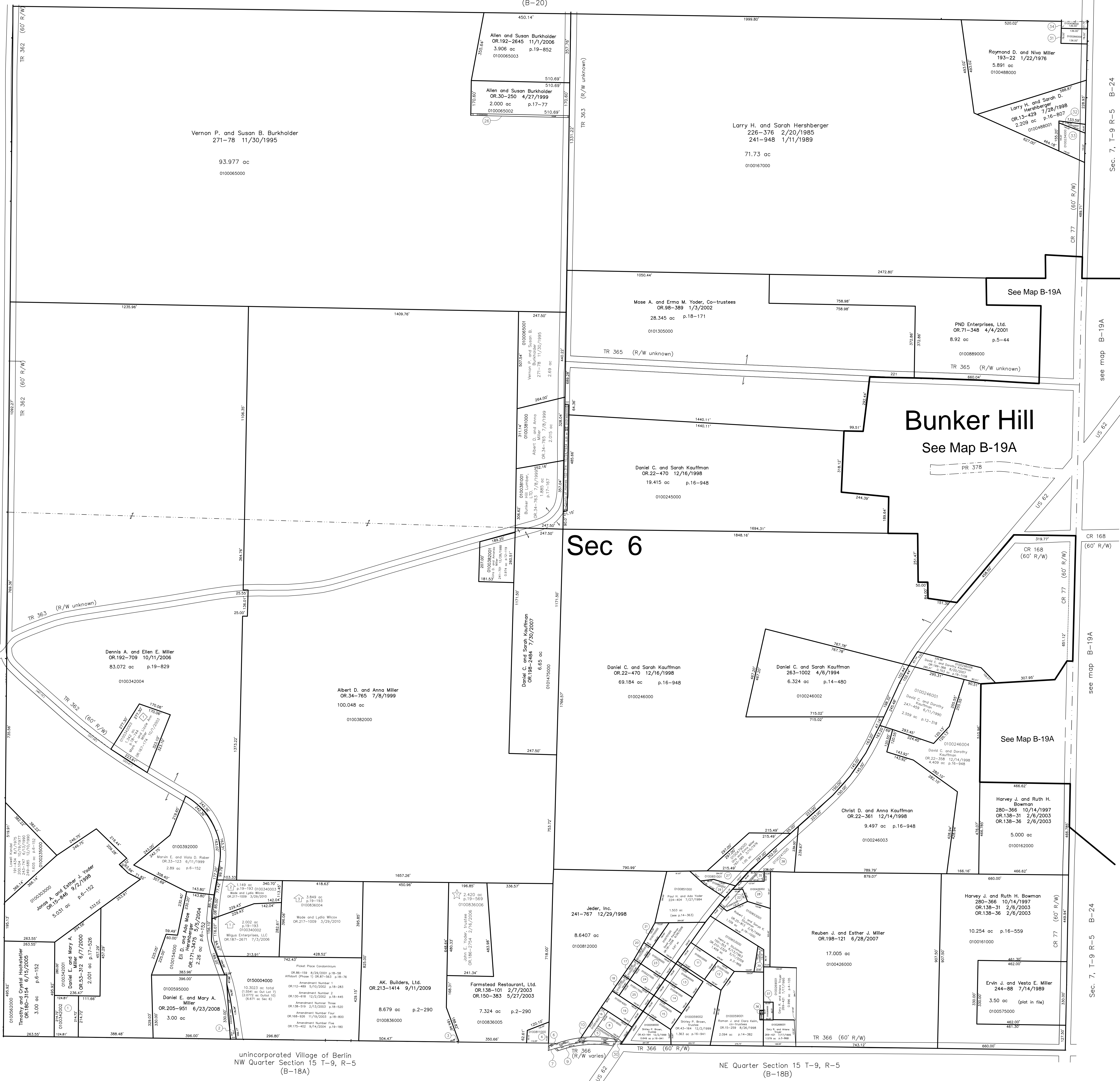


Sec 5 T-9 R-5  
(B-20)

Lot 11 1st Qtr., T-9 R-6

Berlin Township  
(B-14)

Lot 16 1st Qtr., T-9 R-6



unincorporated Village of Berlin  
NW Quarter Section 15 T-9, R-5  
(B-18A)

NE Quarter Section 15 T-9, R-5  
(B-18B)

Sec. 7, T-9 R-5 B-24

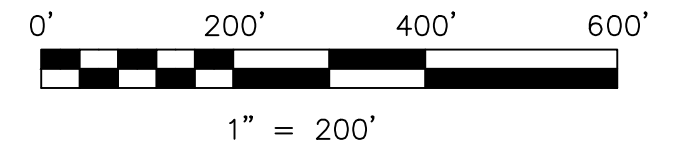
see map B-19A

see map B-19A

see map B-19A

see map B-19A

- 0100342002 ① Timothy and Crystal Hochstetler  
OR.180-3154 5/15/2005  
0.615 ac p.17-205
- 0100342005 ② Dennis A. and Ellen E. Miller  
OR.192-709 10/11/2006  
0.143 ac p.18-829
- 0100836001 ③ Joder, Inc.  
241-787 12/29/1988  
0.001 ac p.11-193
- 0100811000 ④ Emma Yoder  
145-339 5/19/1961  
226-592 3/2/1985  
238-675 4/7/1988  
0.146 ac p.3-278
- 0100520000 ⑤ Holton Relief and Missions, Inc.  
OR.43-162 9/18/2008  
0.132 ac p.4-137
- 0100809000 ⑥ part of Section 6  
see map B-188
- 0100809001 ⑦ Berlin Township Trustees  
OR.184-2620 11/10/2005  
0.0817 ac total p.2-411  
(0.0393 ac Sec 6 = 0.0424 ac Sec 15)
- 0100519000 ⑧ Holton Relief and Missions, Inc.  
OR.206-2918 9/19/2008  
0.34 ac
- 0100656001 ⑨ Berlin Township Trustees  
OR.184-2629 11/10/2005  
0.0492 ac p.2-411
- 0100519002 ⑩ Berlin Township Trustees  
OR.184-2626 11/10/2005  
0.0728 ac p.2-411
- 0100510000 ⑪ Levi J. Mast  
235-579 6/15/1987  
OR.199-1029 8/27/2007  
0.47 ac
- 0100511000 ⑫ Levi J. Mast  
235-579 6/15/1987  
OR.199-1029 8/27/2007  
0.27 ac p.3-966
- 0100640000 ⑬ Shirley P. Brown, trustee  
OR.4-152 12/2/1999  
0.39 ac
- 0100061000 ⑭ Shirley P. Brown, trustee  
OR.4-152 12/2/1999  
0.39 ac
- 0100058000 ⑮ Shirley P. Brown, trustee  
OR.17-36 9/24/1998  
0.39 ac
- 0100519001 ⑯ Holton Relief and Missions, Inc.  
OR.206-2915 9/19/2008  
0.167 ac
- 0100227001 ⑰ Wayne E. Troyer  
OR.73-847 5/1/2001  
0.091 ac
- 0100117002 ⑱ Andrew A. Jr. and Lizzie Ann Miller,  
co-trustees  
OR.28-877 4/2/1999  
0.092 ac
- 0100914001 ⑲ Holton Relief and Mission, Inc.  
OR.192-72 10/3/2006  
0.435 ac p.19-820
- 0100228000 ⑳ Wayne E. Troyer  
OR.73-847 5/1/2001  
0.103 ac p.8-70
- 0100700000 ㉑ David Lee Kauffman  
OR.193-1345 12/1/2006  
0.18 ac p.8-70
- 0100653006 ㉒ Robert L. Stutzman  
OR.133-145 12/1/2006  
0.224 ac p.16-312
- 0100226000 ㉓ Wayne E. Troyer  
OR.73-847 5/1/2001  
0.34 ac
- 0100227000 ㉔ Wayne E. Troyer  
OR.73-847 5/1/2001  
0.34 ac
- 0100117000 ㉕ Andrew A. Jr. and Lizzie Ann Miller,  
co-trustees  
OR.28-877 4/2/1999  
0.34 ac
- 0100065004 ㉖ Allen and Susan Burkholder  
OR.192-709 10/11/2006  
0.117 ac p.19-852
- 0100851001 ㉗ Signature Builders of Berlin, Ltd.  
OR.181-2377 7/12/2005  
0.312 ac p.14-363
- 0100426002 ㉘ Robert L. Stutzman  
OR.193-1345 12/1/2006  
0.447 ac p.16-213
- 0100851002 ㉙ Leon Raber  
OR.212-1866 8/4/2009  
0.185 ac p.19-727
- 0100656000 ㉚ Tobias M. and Stacey D. Raber  
OR.208-321 12/8/2008  
0.6628 ac total p.4-137  
(0.4058 ac Sec 19 = 0.6222 ac Sec 15)
- 0100266000 ㉛ Larry E. and Carrie D. Shetter  
OR.214-1403 10/27/2009  
0.243 ac
- 0100234001 ㉜ Larry H. and Sarah Hershberger  
OR.185-805 12/6/2005  
0.087 ac
- 0100234000 ㉝ Larry H. and Sarah Hershberger  
OR.185-805 12/6/2005  
0.50 ac
- 0100458000 ㉞ Daniel D. and Wilma Troyer  
280-827 12/12/1997  
0.12 ac p.7-360
- 0190014000 ㉟ Northeast Ohio Natural Gas Corp.  
OR.202-3241 2/29/2008  
0.12 ac p.5-4
- 0100059003 ㊱ Gary R. and Arlene Troyer  
OR.183-701 9/13/2005  
0.022 ac p.19-492
- 0100269000 ㊲ Gary R. and Arlene Troyer  
OR.183-701 9/13/2005  
0.106 ac p.14-858
- 0100241000 ㊳ Michelle E. Mishler  
OR.215-167 11/25/2009  
0.652 ac
- 0100653005 ㊴ Robert L. and Sonya K. Stutzman  
OR.210-2335 5/11/2009  
0.117 ac p.19-1514



LET IT BE KNOWN, THIS MAP HAS BEEN PREPARED AS A REFERENCE  
GUIDE TO PROPERTY OWNERSHIP. WE BELIEVE THIS INFORMATION TO  
BE CORRECT AND CURRENT. HOWEVER, IT IS NOT INTENDED FOR ANY  
LEGAL USE, WHETHER IT BE IN SALES, TRANSFERS, TRADES, LEASES  
OF ANY TYPE, ETC., AND DO NOT ACCEPT RESPONSIBILITY FOR  
ERRORS OF ANY NATURE OR OMISSIONS CONTAINED HEREIN.

S.F.T. new survey required  
for next transfer

Last Revision: 6/22/2010

**T-9, R-5, Sec. 6**  
**Berlin Twp.**  
**Holmes County, Ohio**

**B-19**

- ◇ Forsaken Acres Subdivision  
Plot 18-774 Platted 9/24/2003
- ⬆ Meadowdale Subdivision  
Plot 19-193 Platted 9/16/2004
- ☆ Merit Seed Subdivision  
Plot 19-569 Platted 12/12/2005