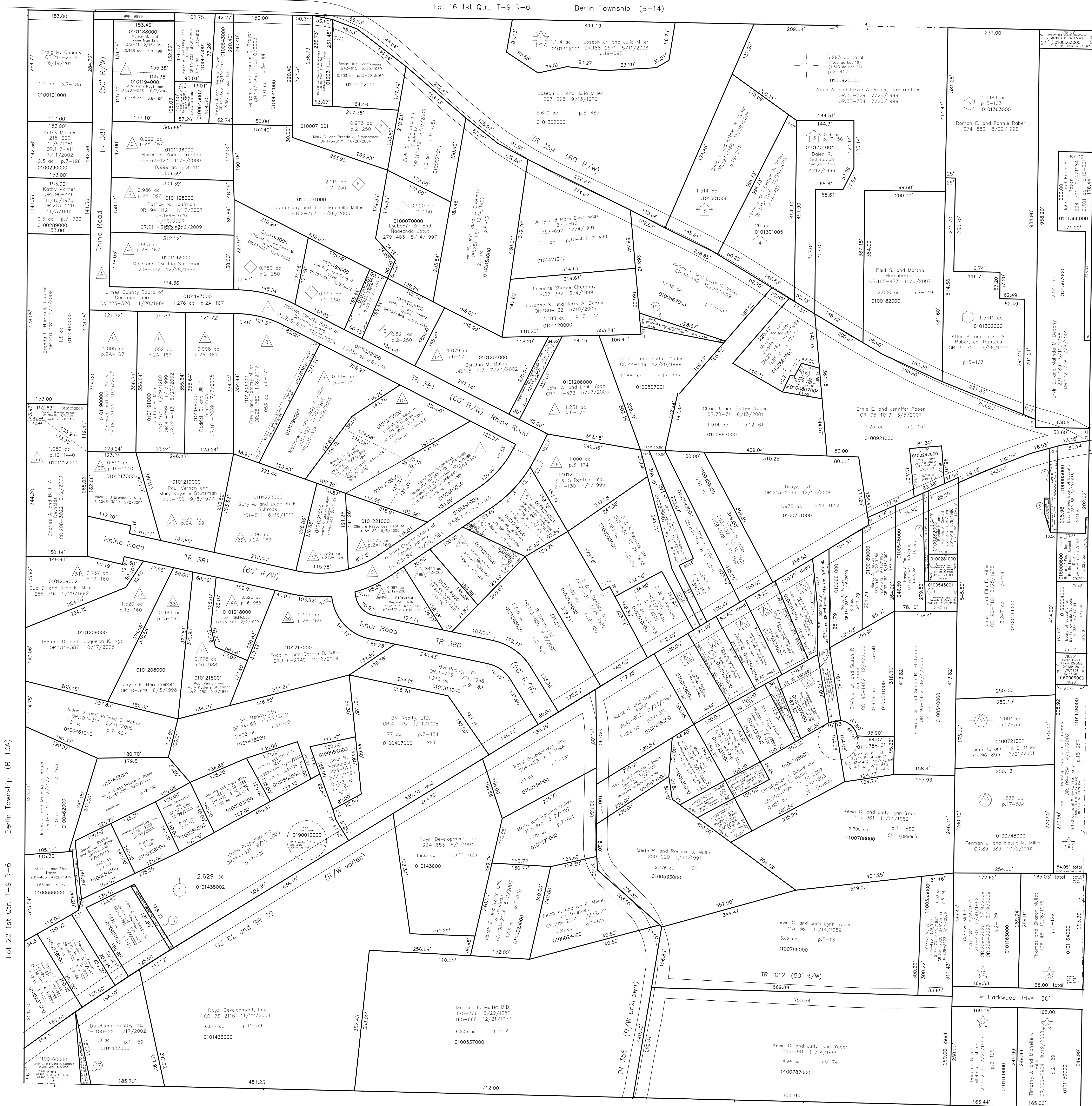


Lot 16 1st Qtr., T-9 R-6 Berlin Township (B-14)



Berlin Township (B-13A)

Berlin Township (B-13B)

Berlin Township (B-13C)

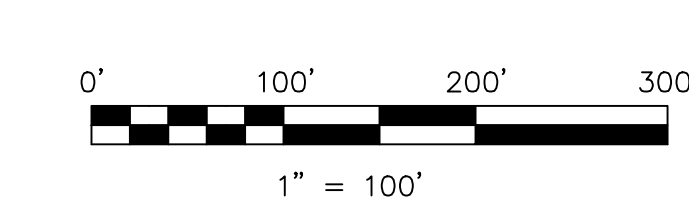
- Stutzman Subdivision
  - First Stutzman Subdivision Plot 2A-167 Platted 9/16/1977 Lots 1 thru 7
  - Second Stutzman Subdivision Plot 6-174, 175 Platted 7/6/1978 Lots 8 thru 16 (Lots 12 and 13 replotted see P.2-250)
  - Third Stutzman Subdivision Plot 2A-169 Platted 6/22/1979 Lots 17 thru 28
  - Revision of Lot 24 Plot 9-30 Platted 12/18/1980 Revised Lot 24 and Lot 24A
  - Replot of Lots 18 and 19 Plot 12-208 Platted 5/8/1989 Lots 18A, 18B and Revised Lot 19
  - Replot of Lot 21 Plot 13-134 Platted 5/9/1991 Lots 29 and 30
  - Replot of Lots 29 and 30 Plot 16-988 Platted 1/27/1999 Lots 34 and 35
  - Replot of Lots 22 and Part Lot 23 Plot 13-160 Platted 5/27/1992 Lots 31, 32 and 33
  - Replot of Lots 24 and 24A and Part Lot 23 Plot 19-1440 Platted 12/29/2008 Lots 36 and 37
- Richard Weaver Allotment No. 1 Plot 2-500 Platted 7/26/1995
- Somerset Allotment No. 1 Plot 17-56 Platted 4/8/1999 Lots 1 thru 3
- Replot of Lots 1 and 2 Plot 19/857 Platted 11/3/2006 Lots 4 and 5
- Garden View Subdivision Plot 2-417 Platted 12/30/2005 Lots 1 thru 3 (also on map B-14)
- Water's Edge Subdivision Plot 19-698 Platted 5/2/2006
- Coblenz Drive Subdivision Plot 15-103 Platted 8/20/1996 Lots 1 thru 5 (also on map B-14)
- Berlin West Subdivision Plot 17-196 Platted 7/28/1999
- Wheat Grove Allotment No. 1 Plot 17-534 Platted 6/21/2000 Lots 1 and 2
- Parkview Subdivision Plot 2-129 Platted 1/10/1968 (also on map B-18A)
- Willard Miller Allotment Number One Plot 2-63 Platted 5/27/1957

- 0150002000 Berlin Hills Condominium 242-615 3/20/1989
- Unit A 0150002001 Mark C. and Brenda J. Zimmerman OR.207-2248 11/4/2008
- Unit B 0150002002 Mark C. and Brenda J. Zimmerman OR.207-2248 11/4/2008
- Unit C 0150002003 Mark C. and Brenda J. Zimmerman OR.207-2248 11/4/2008
- 0150003000 Laurel Run Condominium 243-778 6/14/1989 246-648 9/13/1990
- Unit 5545A Beverly A. Lillo 0150003006 OR.217-619 3/23/2010
- Unit 5545B Rachel Kaufman 0150003007 245-147 10/25/1989
- Unit 5545C Kyle W. Schlabach 0150003008 180-2892 5/15/2009
- Unit 5547A Chester D. Mullet 0150003002 OR.178-18 2/2/2005
- Unit 5547B Duane A. Yoder 0150003003 OR.215-1658 12/16/2009
- Unit 5549A Steven D. Hershberger 0150003004 OR.185-2964 12/30/2005
- Unit 5549B Bonnie Miller 0150003005 245-350 10/25/1989
- Unit 5567A Nathan S. Mast and Karla N. Mast 0150003010 OR.217-2227 4/13/2010
- Unit 5567B Sandra S. Coast 0150003011 OR.126-223 10/23/2002
- Unit 5569A James E. Hershberger 0150003001 OR.185-467 12/2/2005
- Unit 5569B Michael D. Troyer 0150003009 OR.210-1967 5/5/2009

Lot 1 4th Qtr., T-9 R-6 Berlin Township (B-13C)

- 0100563000 1 Timothy and Crystal Hochstetler OR.180-3154 6/15/2005 0.152 ac p.8-377
- 0100003000 2 East Holmes Board of Education DV.239-88 5/20/1988 0.093 ac p.7-414
- 0100439001 3 East Holmes Board of Education OR.47-822 2/25/2000 0.018 ac p.17-403
- 0100546001 4 Ronald K. and Melanie A. Oswald 216-233 11/20/1996 0.085 ac
- 0100281000 5 Ronald K. and Melanie A. Oswald 231-916 8/8/1986 231-918 8/8/1986 0.110 ac p.3-298
- 0100545001 6 Ronald K. and Melanie A. Oswald 216-233 11/20/1996 0.147 ac
- 0100000000 7 not used
- 0101214002 8 NW part Lot 17 Stutzman SD (p.12-208) Duane A. and Carol Miller 277-947 4/23/1997 0.019 ac p.16-243
- 0101215001 9 E part Lot 18A Stutzman SD (p.12-208) Corey Lee and Christina Conn 0.053 ac p.16-243
- 01010134001 10 Marshall R. and Julie Baird OR.141-274 3/7/2003 0.115 ac p.16-383
- 0100208000 11 Christopher J. Dages and Debra L. Mullet OR.201-078 11/30/2007 0.078 ac p.5-22
- 0100134000 12 Merle R. and Rosalyn J. Mullet 281-763 12/9/1997 0.135 ac p.7-152

- 0100212000 13 E part Lot 2 Willard Miller Allot. (p.2-63) Joseph J. and Julia Miller 207-298 9/13/1979 0.973 ac p.2-250
- 0100089000 14 W part Lot 4 Willard Miller Allot. (p.2-63) Kevin E. and Kari L. Misher OR.56-946 8/19/2000 0.057 ac
- 01000651000 15 Larry J. and Kendra R. Kaufman OR.119-215 8/1/2002 OR.119-795 8/7/2002 0.042 ac p.3-92
- 0100867004 16 Marion B. and Valeria L. Blazer OR.78-71 6/13/2001 0.134 ac p.17-895
- 0100156001 17 Dutchland Realty, Inc. OR.100-22 1/17/2002 0.051 ac p.12-507
- 0100643002 18 Nelson J. and Fannie E. Troyer OR.167-863 10/10/2003 0.216 ac p.16-812
- 0101067005 19 James A. and Carol S. Yoder OR.194-329 1/12/2007 OR.46-86 1/25/2000 0.097 ac p.19-906
- 0101393000 20 Lavonne Sheres (Churney) and Jerry A. DeBois OR.27-362 3/4/1999 OR.180-132 5/10/2005 0.1577 ac p.6-174



LET IT BE KNOWN, THIS MAP HAS BEEN PREPARED AS A REFERENCE GUIDE TO PROPERTY OWNERSHIP. WE BELIEVE THIS INFORMATION TO BE CORRECT AND CURRENT, HOWEVER IT IS NOT INTENDED FOR ANY LEGAL USE, WHETHER IT BE IN SALES, TRANSFERS, TRADES, LEASES OF ANY TYPE, ETC., AND DO NOT ACCEPT RESPONSIBILITY FOR ERRORS OF ANY NATURE OR OMISSIONS CONTAINED HEREIN.

S.F.T. new survey required for next transfer

Last Revision: 9/1/2010

T-9, R-6, 1st Qtr., Lot 21 Berlin Twp. Holmes County, Ohio

B-13B