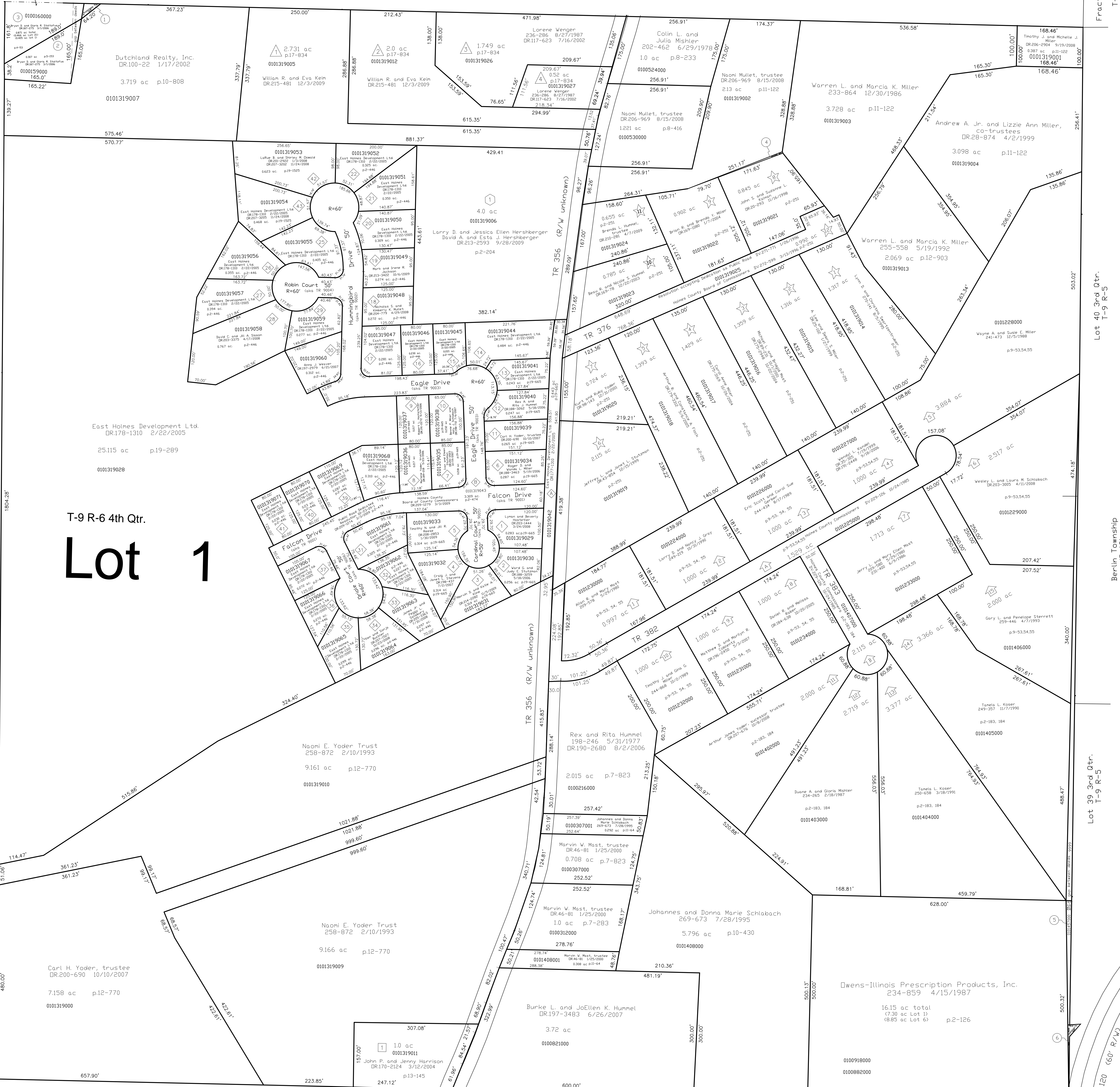


Berlin Township (B-13B) Lot 21 1st Qtr., T-9 R-6



T-9 R-6 4th Qtr.
Lot 1

Fractional Sec
T-9 R-5

Lot 40 3rd Qtr.
T-9 R-5

Berlin Township
(B-18)

Lot 29 2nd Qtr.
T-9 R-5

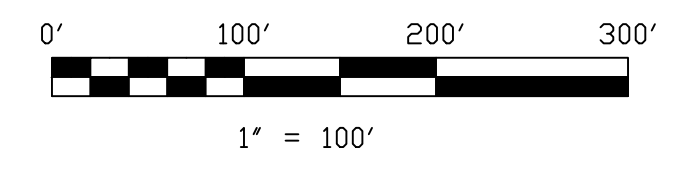
CR 120 (60' R/W)

- Deer Path Estates
Plat 17-834 Platted 3/28/2001
- Warren Miller Allotment No. 1
Plat 2-204 Platted 12/30/1987
- MCC Allotment No. 1
Plat 13-145 Platted 12/27-1991
- The Meadows Allotment No. 1
Plat 2-251 Platted 8/24/1995
- Golden Valley Estates Subdivision
Golden Valley Estates Subdivision, First Add.
Plat 9-53, 54, 55 Platted 12/21/1979
Lots 1 thru 10
Golden Valley Estates Subdivision, Second Addition
Plat 2-183, 184 Platted 11/30/1984
Lots 11 thru 15
- Hawk's Landing
Road Dedication Phase 1 & 2
Plat 2-474 Resolution 02-23-99-1 DR 209-1274
Hawk's Landing Phase 1
Plat 19-653 Platted 4/4/2006
Covenants & Restrictions DR167-2804
Covenants Amended DR212-485
(Lots 1 thru 13)
Hawk's Landing Phase 2
Plat 2-446 Platted 5/11/2007
Covenants & Restrictions DR136-3100
Covenants Amended DR212-485
(Lots 14 thru 41)
Hawk's Landing Phase 2
Replat of Lots 23 & 24
Plat 19-1525 Platted 6/3/2009
Covenants & Restrictions DR212-485
(Lots 42 and 43)

Lot 6 4th Qtr., T-9 R-6
Berlin Township (B-12)

Last Revision: 12/3/2009

**T-9, R-6,
4th Qtr., Lot 1
Berlin Twp.
Holmes County, Ohio**



LET IT BE KNOWN, THIS MAP HAS BEEN PREPARED AS A REFERENCE GUIDE TO PROPERTY OWNERSHIP. WE BELIEVE THIS INFORMATION TO BE CORRECT AND CURRENT, HOWEVER IT IS NOT INTENDED FOR ANY LEGAL USE, WHETHER IT BE IN SALES, TRANSFERS, TRADES, LEASES OF ANY TYPE, ETC., AND DO NOT ACCEPT RESPONSIBILITY FOR ERRORS OF ANY NATURE OR OMISSIONS CONTAINED HEREIN.

S.F.T. new survey required for next transfer

B-13C

- 0100158000 ① Dutchland Realty, Inc.
DR100-22 1/17/2002
0.019 ac p.12-507
- 0100159000 ② Bryan D. and Gloria R. Stoltzfus
DR187-275 3/1/2006
0.307 ac p.5-153
- 0100160000 ③ Bryan D. and Gloria R. Stoltzfus
DR187-275 3/1/2006
0.405 ac p.4-53
- 0101319008 ④ Naomi Mullet, trustee
DR 206-969 8/15/2008
0.003 ac p.15-303
- 0101457000 ⑤ Albert B. and Rebecca A. Hershberger
276-918 1/24/1997
0.067 ac p.16-336
- 0100591001 ⑥ Owens-Illinois Prescription
Products, Inc.
DR 55-486 7/18/2000
0.021 ac total p.17-565
0.002 ac Lot 419 1st Qtr.
0.009 ac Lot 39 3rd Qtr.