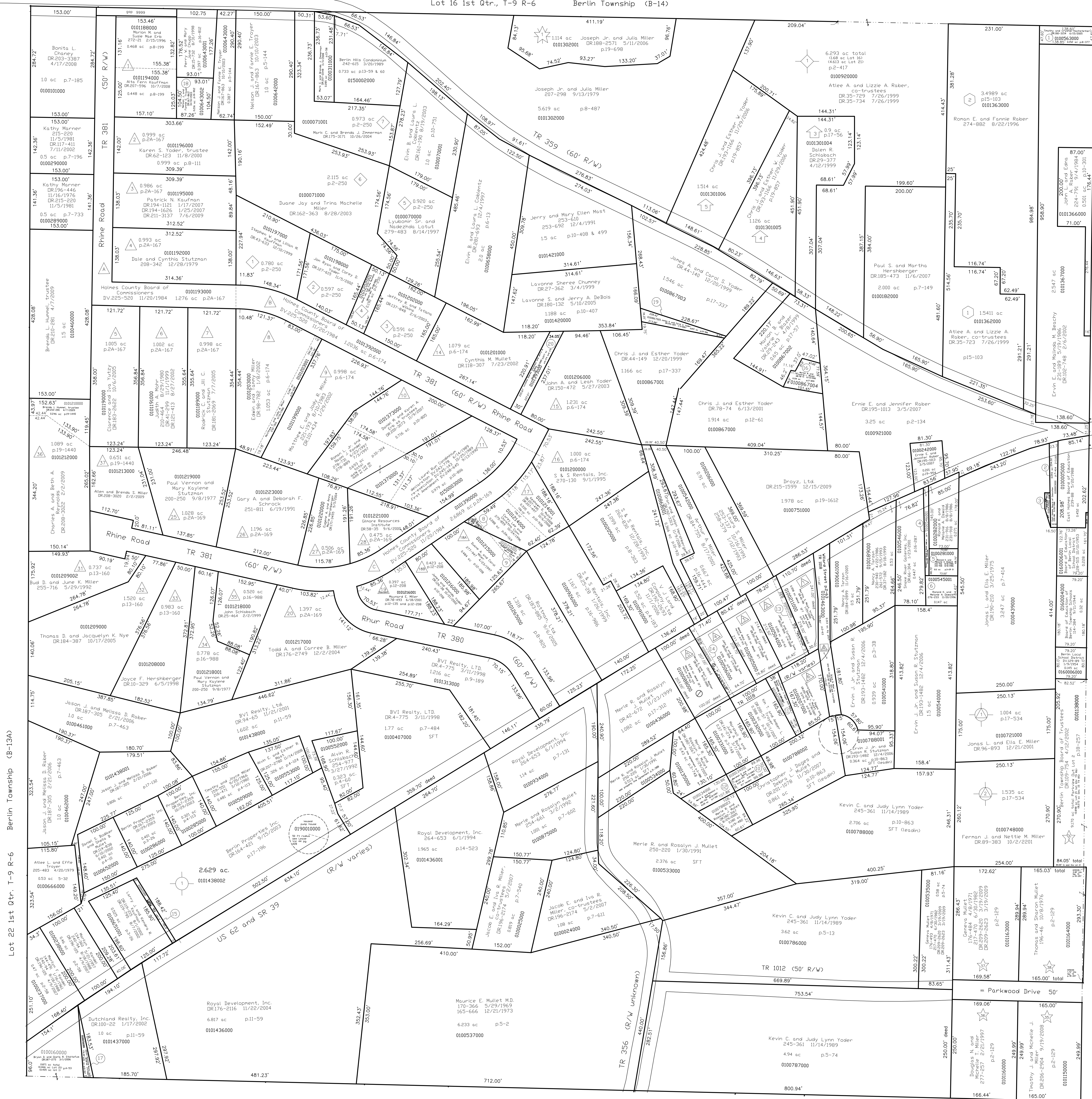


Lot 16 1st Qtr., T-9 R-6 Berlin Township (B-14)

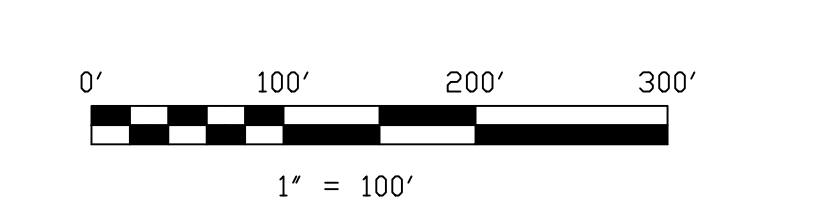


- Stutzman Subdivision**
- First Stutzman Subdivision Plat 2A-167 Platted 9/16/1977 Lots 1 thru 16
 - Second Stutzman Subdivision Plat 6-174-175 Platted 7/6/1978 Lots B thru 16 (Lots 12 and 13 replatted see P-2-250)
 - Third Stutzman Subdivision Plat 2A-169 Platted 6/22/1979 Lots 1 thru 28
 - Revision of Lot 24 Plat 9-30 Platted 12/18/1980 Revised Lot 24 and Lot 24A
 - Replat of Lots 18 and 19 Plat 12-208 Platted 5/8/1989 Lots 18, 18A and Revised Lot 19
 - Replat of Lot 21 Plat 13-134 Platted 5/9/1991 Lots 1 thru 28
 - Replat of Lots 29 and 30 Plat 16-988 Platted 1/27/1999 Lots 34 and 35
 - Replat of Lots 22 and Part Lot 23 Plat 13-160 Platted 5/27/1992 Lots 31, 32 and 33
 - Replat of Lots 24 and 24A and Part Lot 23 Plat 19-1440 Platted 12/29/2008 Lots 36 and 37
- Richard Weaver Allotment No. 1**
- Plat 15-103 Platted 6/20/1996 Lots 1 thru 3
 - Plat 17-56 Platted 4/8/1999 Lots 1 thru 3
 - Plat 19-857 Platted 11/3/2006 Lots 4 and 5
- Somerset Allotment No. 1**
- Plat 17-56 Platted 4/8/1999 Lots 1 thru 3
- Garden View Subdivision**
- Plat 15-103 Platted 6/20/1996 Lots 1 thru 3 (also on map B-14)
- Water's Edge Subdivision**
- Plat 19-698 Platted 5/5/2006
- Coblenz Drive Subdivision**
- Plat 15-103 Platted 6/20/1996 Lots 1 thru 3 (also on map B-14)
- Berlin West Subdivision**
- Plat 17-196 Platted 7/28/1999
- Walnut Grove Allotment No. 1**
- Plat 17-534 Platted 6/21/2000 Lots 1 and 2
- Parkview Subdivision**
- Plat 2-129 Platted 1/10/1968 (also on map B-8A)
- Willard Miller Allotment Number One**
- Plat 2-63 Platted 5/27/1957
- Berlin Hills Condominium**
- 242-615 3/20/1989
- Unit A**
- Mark C. and Brenda J. Zimmerman DR207-2248 11/4/2008
- Unit B**
- Mark C. and Brenda J. Zimmerman DR207-2248 11/4/2008
- Unit C**
- Mark C. and Brenda J. Zimmerman DR207-2248 11/4/2008
- Laurel Run Condominium**
- 243-178 6/14/1989
 - 248-645 9/13/1990
- Unit**
- Nathan D. Yoder DR73-870 5/1/2001
 - Rachel Kaufmann DR215-147 10/25/1989
 - Kyle W. Schibach DR210-2692 5/15/2009
 - Chester D. Mullet DR178-18 2/2/2005
 - Duane A. Yoder DR215-1658 12/16/2009
 - Steven D. Hershberger DR185-2964 12/30/2005
 - Bonnie Miller DR245-350 10/25/1989
 - Ings A. Troyer, trustee DR212-938 7/21/2009
 - Sandra S. Coast DR126-223 10/23/2002
 - James E. Hershberger DR185-467 12/2/2005
 - Michael D. Troyer DR210-1967 5/5/2009

Lot 1 4th Qtr., T-9 R-6 Berlin Township (B-13C)

- 0100563000 (1) Timothy and Crystal Hochstetter DR189-3154 6/15/2005 0.152 ac p-8-377
- 0100003000 (2) East Holmes Board of Education DV239-98 5/20/1988 0.093 ac p-7-414
- 0100439001 (3) East Holmes Board of Education DR47-822 2/25/2000 0.018 ac p-17-403
- 0100546001 (4) Ronald K. and Melanie A. Dswald 276-233 11/20/1996 0.085 ac
- 0100281000 (5) Ronald K. and Melanie A. Dswald 231-916 8/8/1986 231-918 8/8/1986 0.018 ac p-3-298
- 0100545001 (6) Ronald K. and Melanie A. Dswald 276-233 11/20/1996 0.147 ac
- 0100000000 (7) not used
- 0101214002 (8) NW part Lot 17 Stutzman SD (p12-208) Duane A. and Carol Miller 277-947 4/23/1997 0.019 ac p-16-243
- 0101215001 (9) E part Lot 18A Stutzman SD (p12-208) Carey Lee and Christina Conn 0.018 ac p-16-243
- 010134001 (10) Marshall R. and Julie Baird DR141-274 3/7/2003 0.015 ac p-16-383
- 0100208000 (11) Christopher J. Dages and Debra L. Mullet DR201-078 11/30/2007 0.078 ac p-5-82
- 010134000 (12) Merle R. and Rosalyn J. Mullet 281-763 12/9/1997 0.135 ac p-7-152
- 0100212000 (13) E part Lot 2 Willard Miller Allot. (p-2-63) Martha S. Most, trustee DR46-86 1/25/2000 0.095 ac p-4-135
- 0100089000 (14) W part Lot 4 Willard Miller Allot. (p-2-63) Kevin E. and Karl L. Misher DR36-746 8/15/2005 0.057 ac
- 0100651000 (15) Larry J. and Kendra R. Kaufman DR119-215 8/1/2002 DR119-795 8/7/2002 0.053 ac p-3-32
- 0100867004 (16) Marion B. and Valerie L. Blazer DR78-71 6/13/2001 0.134 ac p-17-895
- 0100156001 (17) Dutchland Realty, Inc. DR100-22 1/17/2002 0.091 ac p-12-507
- 0100643002 (18) Nelson J. and Fannie E. Troyer DR167-863 10/10/2003 0.216 ac p-16-812

- 0100867005 (19) Jones A. and Carol S. Yoder DR194-389 1/3/2007 0.097 ac p-19-906
- 0101939000 (20) Lavonne Sheree (Chunney) and Jerry A. DeBals DR27-362 3/4/1999 DR189-132 5/10/2005 0.1577 ac p-6-174
- 0100970000 (21) Lavonne Sheree (Chunney) and Jerry A. DeBals DR27-362 3/4/1999 DR189-132 5/10/2005 0.1577 ac p-6-174
- 0100970000 (22) Lavonne Sheree (Chunney) and Jerry A. DeBals DR27-362 3/4/1999 DR189-132 5/10/2005 0.1577 ac p-6-174
- 0100970000 (23) Lavonne Sheree (Chunney) and Jerry A. DeBals DR27-362 3/4/1999 DR189-132 5/10/2005 0.1577 ac p-6-174
- 0100970000 (24) Lavonne Sheree (Chunney) and Jerry A. DeBals DR27-362 3/4/1999 DR189-132 5/10/2005 0.1577 ac p-6-174
- 0100970000 (25) Lavonne Sheree (Chunney) and Jerry A. DeBals DR27-362 3/4/1999 DR189-132 5/10/2005 0.1577 ac p-6-174
- 0100970000 (26) Lavonne Sheree (Chunney) and Jerry A. DeBals DR27-362 3/4/1999 DR189-132 5/10/2005 0.1577 ac p-6-174
- 0100970000 (27) Lavonne Sheree (Chunney) and Jerry A. DeBals DR27-362 3/4/1999 DR189-132 5/10/2005 0.1577 ac p-6-174
- 0100970000 (28) Lavonne Sheree (Chunney) and Jerry A. DeBals DR27-362 3/4/1999 DR189-132 5/10/2005 0.1577 ac p-6-174
- 0100970000 (29) Lavonne Sheree (Chunney) and Jerry A. DeBals DR27-362 3/4/1999 DR189-132 5/10/2005 0.1577 ac p-6-174
- 0100970000 (30) Lavonne Sheree (Chunney) and Jerry A. DeBals DR27-362 3/4/1999 DR189-132 5/10/2005 0.1577 ac p-6-174
- 0100970000 (31) Lavonne Sheree (Chunney) and Jerry A. DeBals DR27-362 3/4/1999 DR189-132 5/10/2005 0.1577 ac p-6-174
- 0100970000 (32) Lavonne Sheree (Chunney) and Jerry A. DeBals DR27-362 3/4/1999 DR189-132 5/10/2005 0.1577 ac p-6-174
- 0100970000 (33) Lavonne Sheree (Chunney) and Jerry A. DeBals DR27-362 3/4/1999 DR189-132 5/10/2005 0.1577 ac p-6-174
- 0100970000 (34) Lavonne Sheree (Chunney) and Jerry A. DeBals DR27-362 3/4/1999 DR189-132 5/10/2005 0.1577 ac p-6-174
- 0100970000 (35) Lavonne Sheree (Chunney) and Jerry A. DeBals DR27-362 3/4/1999 DR189-132 5/10/2005 0.1577 ac p-6-174
- 0100970000 (36) Lavonne Sheree (Chunney) and Jerry A. DeBals DR27-362 3/4/1999 DR189-132 5/10/2005 0.1577 ac p-6-174
- 0100970000 (37) Lavonne Sheree (Chunney) and Jerry A. DeBals DR27-362 3/4/1999 DR189-132 5/10/2005 0.1577 ac p-6-174
- 0100970000 (38) Lavonne Sheree (Chunney) and Jerry A. DeBals DR27-362 3/4/1999 DR189-132 5/10/2005 0.1577 ac p-6-174
- 0100970000 (39) Lavonne Sheree (Chunney) and Jerry A. DeBals DR27-362 3/4/1999 DR189-132 5/10/2005 0.1577 ac p-6-174
- 0100970000 (40) Lavonne Sheree (Chunney) and Jerry A. DeBals DR27-362 3/4/1999 DR189-132 5/10/2005 0.1577 ac p-6-174
- 0100970000 (41) Lavonne Sheree (Chunney) and Jerry A. DeBals DR27-362 3/4/1999 DR189-132 5/10/2005 0.1577 ac p-6-174
- 0100970000 (42) Lavonne Sheree (Chunney) and Jerry A. DeBals DR27-362 3/4/1999 DR189-132 5/10/2005 0.1577 ac p-6-174
- 0100970000 (43) Lavonne Sheree (Chunney) and Jerry A. DeBals DR27-362 3/4/1999 DR189-132 5/10/2005 0.1577 ac p-6-174
- 0100970000 (44) Lavonne Sheree (Chunney) and Jerry A. DeBals DR27-362 3/4/1999 DR189-132 5/10/2005 0.1577 ac p-6-174
- 0100970000 (45) Lavonne Sheree (Chunney) and Jerry A. DeBals DR27-362 3/4/1999 DR189-132 5/10/2005 0.1577 ac p-6-174
- 0100970000 (46) Lavonne Sheree (Chunney) and Jerry A. DeBals DR27-362 3/4/1999 DR189-132 5/10/2005 0.1577 ac p-6-174
- 0100970000 (47) Lavonne Sheree (Chunney) and Jerry A. DeBals DR27-362 3/4/1999 DR189-132 5/10/2005 0.1577 ac p-6-174
- 0100970000 (48) Lavonne Sheree (Chunney) and Jerry A. DeBals DR27-362 3/4/1999 DR189-132 5/10/2005 0.1577 ac p-6-174
- 0100970000 (49) Lavonne Sheree (Chunney) and Jerry A. DeBals DR27-362 3/4/1999 DR189-132 5/10/2005 0.1577 ac p-6-174
- 0100970000 (50) Lavonne Sheree (Chunney) and Jerry A. DeBals DR27-362 3/4/1999 DR189-132 5/10/2005 0.1577 ac p-6-174
- 0100970000 (51) Lavonne Sheree (Chunney) and Jerry A. DeBals DR27-362 3/4/1999 DR189-132 5/10/2005 0.1577 ac p-6-174
- 0100970000 (52) Lavonne Sheree (Chunney) and Jerry A. DeBals DR27-362 3/4/1999 DR189-132 5/10/2005 0.1577 ac p-6-174
- 0100970000 (53) Lavonne Sheree (Chunney) and Jerry A. DeBals DR27-362 3/4/1999 DR189-132 5/10/2005 0.1577 ac p-6-174
- 0100970000 (54) Lavonne Sheree (Chunney) and Jerry A. DeBals DR27-362 3/4/1999 DR189-132 5/10/2005 0.1577 ac p-6-174
- 0100970000 (55) Lavonne Sheree (Chunney) and Jerry A. DeBals DR27-362 3/4/1999 DR189-132 5/10/2005 0.1577 ac p-6-174
- 0100970000 (56) Lavonne Sheree (Chunney) and Jerry A. DeBals DR27-362 3/4/1999 DR189-132 5/10/2005 0.1577 ac p-6-174
- 0100970000 (57) Lavonne Sheree (Chunney) and Jerry A. DeBals DR27-362 3/4/1999 DR189-132 5/10/2005 0.1577 ac p-6-174
- 0100970000 (58) Lavonne Sheree (Chunney) and Jerry A. DeBals DR27-362 3/4/1999 DR189-132 5/10/2005 0.1577 ac p-6-174
- 0100970000 (59) Lavonne Sheree (Chunney) and Jerry A. DeBals DR27-362 3/4/1999 DR189-132 5/10/2005 0.1577 ac p-6-174
- 0100970000 (60) Lavonne Sheree (Chunney) and Jerry A. DeBals DR27-362 3/4/1999 DR189-132 5/10/2005 0.1577 ac p-6-174
- 0100970000 (61) Lavonne Sheree (Chunney) and Jerry A. DeBals DR27-362 3/4/1999 DR189-132 5/10/2005 0.1577 ac p-6-174
- 0100970000 (62) Lavonne Sheree (Chunney) and Jerry A. DeBals DR27-362 3/4/1999 DR189-132 5/10/2005 0.1577 ac p-6-174
- 0100970000 (63) Lavonne Sheree (Chunney) and Jerry A. DeBals DR27-362 3/4/1999 DR189-132 5/10/2005 0.1577 ac p-6-174
- 0100970000 (64) Lavonne Sheree (Chunney) and Jerry A. DeBals DR27-362 3/4/1999 DR189-132 5/10/2005 0.1577 ac p-6-174
- 0100970000 (65) Lavonne Sheree (Chunney) and Jerry A. DeBals DR27-362 3/4/1999 DR189-132 5/10/2005 0.1577 ac p-6-174
- 0100970000 (66) Lavonne Sheree (Chunney) and Jerry A. DeBals DR27-362 3/4/1999 DR189-132 5/10/2005 0.1577 ac p-6-174
- 0100970000 (67) Lavonne Sheree (Chunney) and Jerry A. DeBals DR27-362 3/4/1999 DR189-132 5/10/2005 0.1577 ac p-6-174
- 0100970000 (68) Lavonne Sheree (Chunney) and Jerry A. DeBals DR27-362 3/4/1999 DR189-132 5/10/2005 0.1577 ac p-6-174
- 0100970000 (69) Lavonne Sheree (Chunney) and Jerry A. DeBals DR27-362 3/4/1999 DR189-132 5/10/2005 0.1577 ac p-6-174
- 0100970000 (70) Lavonne Sheree (Chunney) and Jerry A. DeBals DR27-362 3/4/1999 DR189-132 5/10/2005 0.1577 ac p-6-174
- 0100970000 (71) Lavonne Sheree (Chunney) and Jerry A. DeBals DR27-362 3/4/1999 DR189-132 5/10/2005 0.1577 ac p-6-174
- 0100970000 (72) Lavonne Sheree (Chunney) and Jerry A. DeBals DR27-362 3/4/1999 DR189-132 5/10/2005 0.1577 ac p-6-174
- 0100970000 (73) Lavonne Sheree (Chunney) and Jerry A. DeBals DR27-362 3/4/1999 DR189-132 5/10/2005 0.1577 ac p-6-174
- 0100970000 (74) Lavonne Sheree (Chunney) and Jerry A. DeBals DR27-362 3/4/1999 DR189-132 5/10/2005 0.1577 ac p-6-174
- 0100970000 (75) Lavonne Sheree (Chunney) and Jerry A. DeBals DR27-362 3/4/1999 DR189-132 5/10/2005 0.1577 ac p-6-174
- 0100970000 (76) Lavonne Sheree (Chunney) and Jerry A. DeBals DR27-362 3/4/1999 DR189-132 5/10/2005 0.1577 ac p-6-174
- 0100970000 (77) Lavonne Sheree (Chunney) and Jerry A. DeBals DR27-362 3/4/1999 DR189-132 5/10/2005 0.1577 ac p-6-174
- 0100970000 (78) Lavonne Sheree (Chunney) and Jerry A. DeBals DR27-362 3/4/1999 DR189-132 5/10/2005 0.1577 ac p-6-174
- 0100970000 (79) Lavonne Sheree (Chunney) and Jerry A. DeBals DR27-362 3/4/1999 DR189-132 5/10/2005 0.1577 ac p-6-174
- 0100970000 (80) Lavonne Sheree (Chunney) and Jerry A. DeBals DR27-362 3/4/1999 DR189-132 5/10/2005 0.1577 ac p-6-174
- 0100970000 (81) Lavonne Sheree (Chunney) and Jerry A. DeBals DR27-362 3/4/1999 DR189-132 5/10/2005 0.1577 ac p-6-174
- 0100970000 (82) Lavonne Sheree (Chunney) and Jerry A. DeBals DR27-362 3/4/1999 DR189-132 5/10/2005 0.1577 ac p-6-174
- 0100970000 (83) Lavonne Sheree (Chunney) and Jerry A. DeBals DR27-362 3/4/1999 DR189-132 5/10/2005 0.1577 ac p-6-174
- 0100970000 (84) Lavonne Sheree (Chunney) and Jerry A. DeBals DR27-362 3/4/1999 DR189-132 5/10/2005 0.1577 ac p-6-174
- 0100970000 (85) Lavonne Sheree (Chunney) and Jerry A. DeBals DR27-362 3/4/1999 DR189-132 5/10/2005 0.1577 ac p-6-174
- 0100970000 (86) Lavonne Sheree (Chunney) and Jerry A. DeBals DR27-362 3/4/1999 DR189-132 5/10/2005 0.1577 ac p-6-174
- 0100970000 (87) Lavonne Sheree (Chunney) and Jerry A. DeBals DR27-362 3/4/1999 DR189-132 5/10/2005 0.1577 ac p-6-174
- 0100970000 (88) Lavonne Sheree (Chunney) and Jerry A. DeBals DR27-362 3/4/1999 DR189-132 5/10/2005 0.1577 ac p-6-174
- 0100970000 (89) Lavonne Sheree (Chunney) and Jerry A. DeBals DR27-362 3/4/1999 DR189-132 5/10/2005 0.1577 ac p-6-174
- 0100970000 (90) Lavonne Sheree (Chunney) and Jerry A. DeBals DR27-362 3/4/1999 DR189-132 5/10/2005 0.1577 ac p-6-174
- 0100970000 (91) Lavonne Sheree (Chunney) and Jerry A. DeBals DR27-362 3/4/1999 DR189-132 5/10/2005 0.1577 ac p-6-174
- 0100970000 (92) Lavonne Sheree (Chunney) and Jerry A. DeBals DR27-362 3/4/1999 DR189-132 5/10/2005 0.1577 ac p-6-174
- 0100970000 (93) Lavonne Sheree (Chunney) and Jerry A. DeBals DR27-362 3/4/1999 DR189-132 5/10/2005 0.1577 ac p-6-174
- 0100970000 (94) Lavonne Sheree (Chunney) and Jerry A. DeBals DR27-362 3/4/1999 DR189-132 5/10/2005 0.1577 ac p-6-174
- 0100970000 (95) Lavonne Sheree (Chunney) and Jerry A. DeBals DR27-362 3/4/1999 DR189-132 5/10/2005 0.1577 ac p-6-174
- 0100970000 (96) Lavonne Sheree (Chunney) and Jerry A. DeBals DR27-362 3/4/1999 DR189-132 5/10/2005 0.1577 ac p-6-174
- 0100970000 (97) Lavonne Sheree (Chunney) and Jerry A. DeBals DR27-362 3/4/1999 DR189-132 5/10/2005 0.1577 ac p-6-174
- 0100970000 (98) Lavonne Sheree (Chunney) and Jerry A. DeBals DR27-362 3/4/1999 DR189-132 5/10/2005 0.1577 ac p-6-174
- 0100970000 (99) Lavonne Sheree (Chunney) and Jerry A. DeBals DR27-362 3/4/1999 DR189-132 5/10/2005 0.1577 ac p-6-174
- 0100970000 (100) Lavonne Sheree (Chunney) and Jerry A. DeBals DR27-362 3/4/1999 DR189-132 5/10/2005 0.1577 ac p-6-174



LET IT BE KNOWN, THIS MAP HAS BEEN PREPARED AS A REFERENCE GUIDE TO PROPERTY OWNERSHIP. WE BELIEVE THIS INFORMATION TO BE CORRECT AND CURRENT, HOWEVER IT IS NOT INTENDED FOR ANY LEGAL USE, WHETHER IT BE IN SALES, TRANSFERS, TRADES, LEASES OF ANY TYPE, ETC., AND DO NOT ACCEPT RESPONSIBILITY FOR ERRORS OF ANY NATURE OR OMISSIONS CONTAINED HEREIN.

S.F.T. new survey required for next transfer

Last Revision: 12/16/2009

**T-9, R-6,
1st Qtr., Lot 21
Berlin Twp.
Holmes County, Ohio**

B-13B