

Lot 23, 3rd Qtr., T-9, R-5  
(B-23)

Lot 10, 3rd Qtr., T-9, R-5  
(B-23)

Lot 27, 3rd Qtr., T-9, R-5  
(B-17)

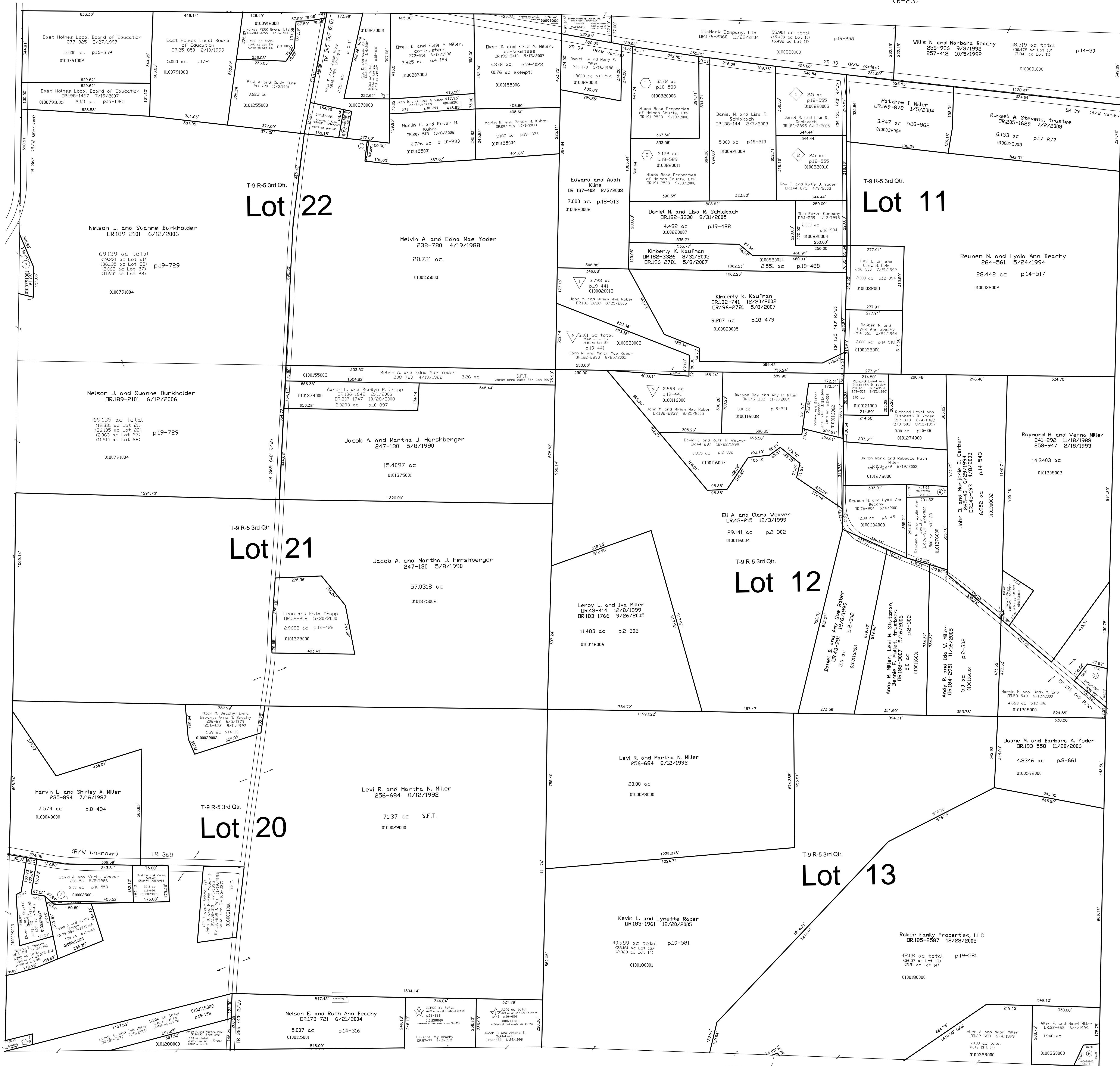
Lot 28, 3rd Qtr., T-9, R-5  
(B-17)

Lot 29, 3rd Qtr., T-9, R-5  
(B-17)

Lot 6, 3rd Qtr., T-9, R-5  
Walnut Creek Township  
(WC-02)

Lot 5, 3rd Qtr., T-9, R-5  
Walnut Creek Township  
(WC-02)

Lot 4, 3rd Qtr., T-9, R-5  
Walnut Creek Township  
(WC-02)

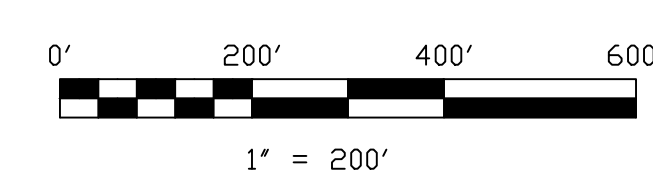


Lot 19, 3rd Qtr., T-9, R-5  
(B-21)

Lot 14, 3rd Qtr., T-9, R-5  
(B-21)

- ☆ Frey Allotment No. 2  
Plat 16-626 Platted 1/8/1998  
affidavit for real estate use DR-1999  
1/21/1998
- 🏠 Sand Knob  
Plat 18-111 Platted 10/31/2001  
see map B-17 for owner information

- ◇ Benwill Subdivision  
Plat 18-555 Platted  
3/19/2003
- ⬡ WA Subdivision  
Plat 18-589 Platted  
4/16/2003
- ▽ JMR Subdivision  
Plat 19-441 Platted  
6/30/2005



LET IT BE KNOWN THIS MAP HAS BEEN PREPARED AS A REFERENCE  
GUIDE TO PROPERTY OWNERSHIP. WE BELIEVE THIS INFORMATION TO  
BE CORRECT AND CURRENT, HOWEVER IT IS NOT INTENDED FOR ANY  
LEGAL USE, WHETHER IT BE IN SALES, TRANSFERS, TRUSTS, LEASES  
OF ANY TYPE, ETC., AND DO NOT ACCEPT RESPONSIBILITY FOR  
ERRORS OF ANY NATURE OR OMISSIONS CONTAINED HEREIN.

S.F.T. new survey  
required for next  
transfer

Last Revision: 10/28/2008

**T-9, R-5, 3rd Qtr.**  
**Lots 11, 12, 13, 20, 21, 22**  
**Berlin Twp.**  
**Holmes County, Ohio**

# B-22