

T.M. 367  
Old T.M. 83  
No Klu

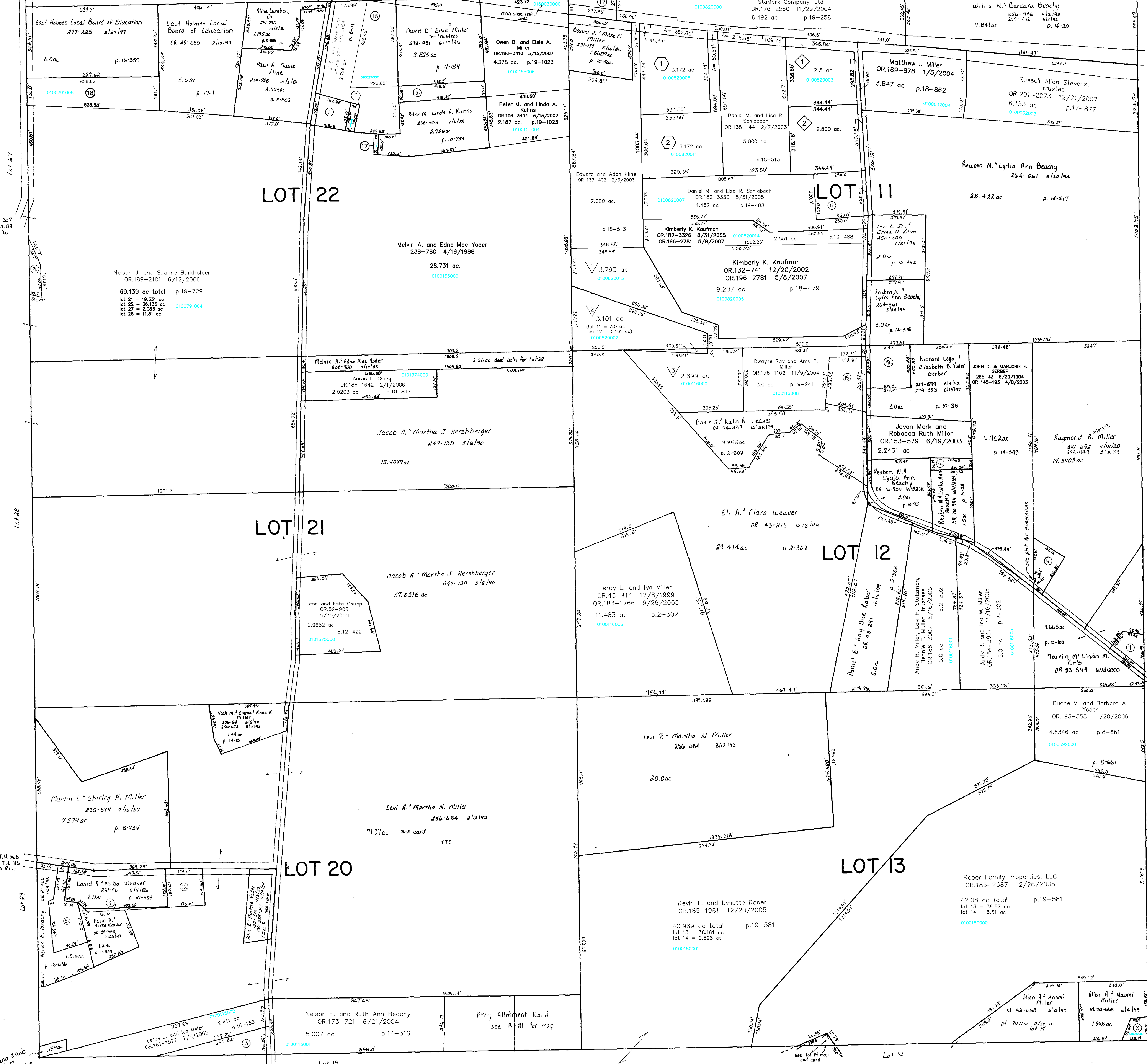
S.K. 39  
Klu varies  
see plans

Lot 10

S.K. 39  
Klu varies  
see plans

Wahmed Creek Top

C.H. 135  
40' Klu



- 1 KLINE AMANDA D.  
202-658 7/14/1978  
0.559 ac p.8-245
- 2 Amanda D. Schlabach aka Kline  
OR.184-2795 11/15/2005  
0.125 ac p.8-245
- 3 MILLER OWEN D. AND ELSE CO-TRUSTEES  
273-951 6/17/1999  
0.72 ac p.10-394
- 4 BEACHY REUBEN N. AND LYDIA ANN  
OR.0076-904 6/4/2001  
0.2569 ac p.10-48
- 5 BEACHY ELMER JR. AND CRYSTAL  
OR.0048-205 3/3/2000  
1.003 ac p.17-411
- 6 CHUPP DORA S.  
239-698 4/8/1988  
0.544 ac p.10-635

- 7 ERB MARVIN M. AND LINDA M.  
OR.0053-549 6/12/2000  
0.4487 ac p.10-165
- 8 Marion W. and Mary Beth Burkholder  
OR.182-2764 8/25/2005  
0.242 ac p.12-228
- 9 YODER JERRY A. AND LISA R.  
273-544 5/17/1996  
278-255 5/15/1997  
0.278 ac p.18-105
- 10 GERBER RICHARD LOYAL AND  
ELIZABETH D. YODER  
201-612 9/25/1978  
279-503 8/15/1997  
1.0 ac
- 11 OHIO POWER COMPANY  
OR.0001-559 1/12/1998  
1.263 ac p.18-628
- 12 WEAVER DAVID A. AND VERBA  
OR.0002-74 1/22/1998  
0.07 ac p.16-636

- 13 WEAVER DAVID A. AND VERBA  
OR.0002-74 1/22/1998  
0.718 ac p.16-636
- 14 MILLER LEVI R. AND MARTHA  
OR.0003-495 2/18/1998  
0.963 ac p.15-153
- 15 GERBER WELDON AND ESTHER  
OR.0042-740 11/23/1999  
0.278 ac p.2-302
- 16 KLINE PAUL E. AND SUSIE  
ELIZABETH D. YODER  
OR.0169-934 1/6/2004  
1.717 ac p.18-480
- 17 Peter M. and Linda A. Kuhns  
OR.0196 5/15/2007  
0.018 ac p.19-1023
- 18 East Holmes Local Board of Education  
OR.198-1467 7/19/2007  
2.101 ac p.19-1085

- JMR Subdivision  
Plot 19-441 Platted 6/30/2005
- 19 John M. and Miriam Mae Rober  
OR.182-2828 8/25/2005  
3.793 ac
- 20 John M. and Miriam Mae Rober  
OR.182-2833 8/25/2005  
3.101 ac
- 21 John M. and Miriam Mae Rober  
OR.182-2833 8/25/2005  
2.899 ac

- Banwill Subdivision  
Plot 18-555 Platted 3/19/2003
- 22 Daniel M. and Lisa R. Schlabach  
OR.180-2895 6/13/2005  
2.5 ac p.18-555
- 23 YODER ROY E. AND KATIE J.  
OR.0144-675 4/8/2003  
2.5 ac
- WA Subdivision  
Plat 18-589 Platted 4/16/2003
- 24 Hiland Road Properties of Holmes County, Ltd.  
OR.191-2509 9/18/2006  
3.172 ac p.18-589
- 25 Hiland Road Properties of Holmes County, Ltd.  
OR.191-2509 9/18/2006  
3.172 ac p.18-589

T-9, R-5, 3rd. Qtr.  
Lots 11, 12, 13, 20, 21, 22  
BERLIN TWP.  
SCALE: 1"=200'  
Last Revision: 12/21/2007

LET IT BE KNOWN, THIS MAP HAS BEEN PREPARED AS A REFERENCE GUIDE TO PROPERTY OWNERSHIP. WE BELIEVE THIS INFORMATION TO BE CORRECT AND CURRENT, HOWEVER, IT IS NOT INTENDED FOR ANY LEGAL USE, WHETHER IT BE IN SALES, TRANSFERS, TRADES, LEASES OF ANY TYPE, ETC., AND DO NOT ACCEPT RESPONSIBILITY FOR ERRORS OF ANY NATURE OR OMISSIONS CONTAINED HEREIN.

B-22