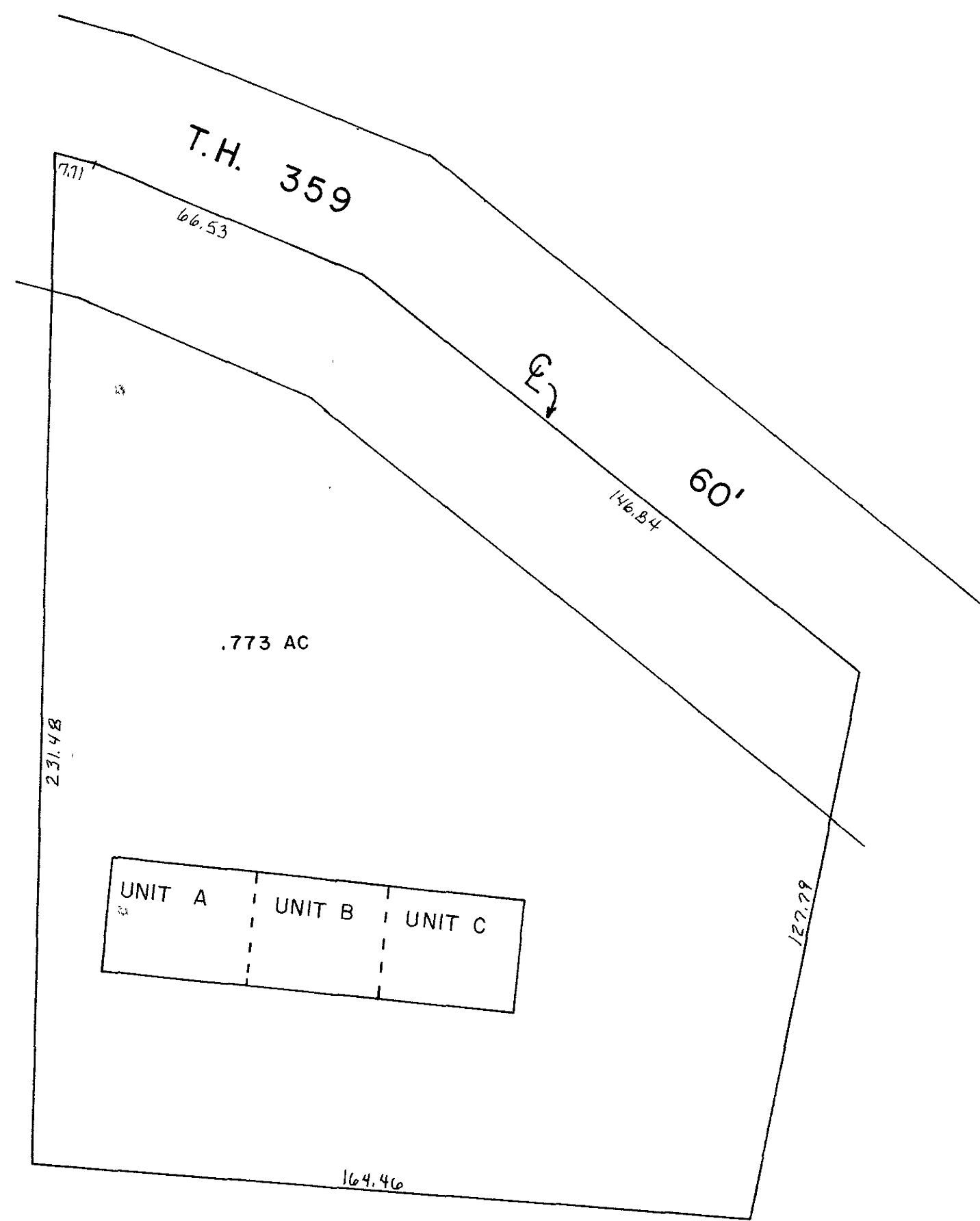


BERLIN HILLS CONDOMINIUM			
UNIT	OWNER	DEED	DATE
A	0150002001 MULLET ASSOCIATES, LTD. OR.0003-127	2/10/1998	
B	0150002002 MULLET ASSOCIATES, LTD. OR.0003-127	2/10/1998	
C	0150002003 MULLET ASSOCIATES, LTD. OR.0003-127	2/10/1998	
COMMON AREA	0150002000 EACH UNIT OWNS UNDIVIDED ONE-THIRD	2/10/1998	3/20/1999



BERLIN HILLS CONDOMINIUM

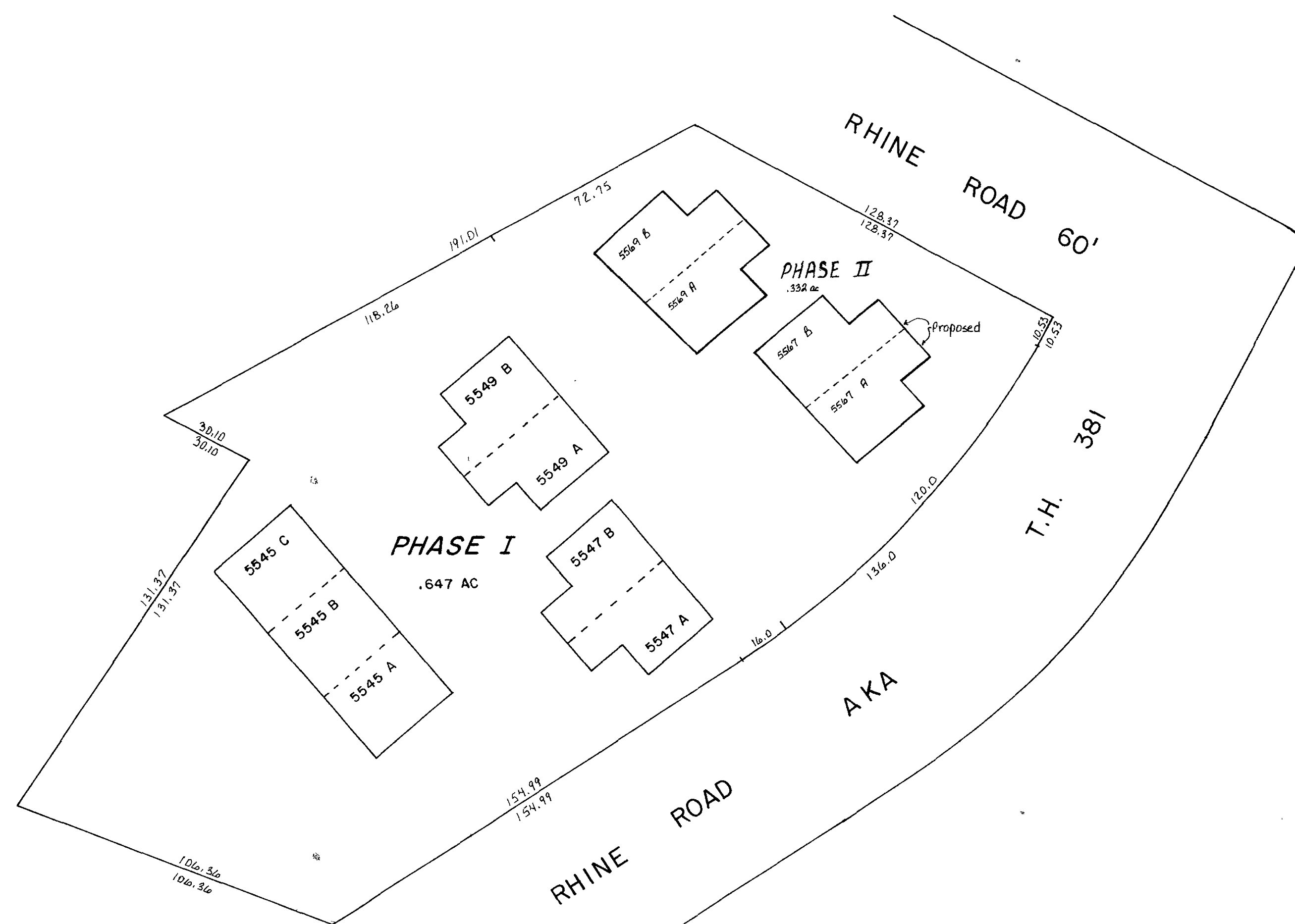
Lot 21, 1st Qtr., T-9, R-6 (See Map B-13B)

Scale 1" = 30'

Declaration: Vol. 242, Pg. 615 3-20-1989

Plat Vol. 13, Pg. 59-60

LAUREL RUN CONDOMINIUM PHASE I			
UNIT	OWNER	DEED	DATE
5545 A	0150003006 YODER NATHAN D. OR.0073-870	5/1/2001	
5545 B	0150003007 KAUFMANN RACHEL 245-147	10/25/1989	
5545 C	0150003008 YODER JOHN E. OR.0076-442	5/30/2001	
5547 A	0150003002 Chester D. Mullet OR.178-18	2/2/2005	
5547 B	0150003003 YODER JAMES D. OR.0042-88	11/12/1999	
5549 A	0150003004 Steven D. Hershberger OR.185-2964	12/30/2005	
5549 B	0150003005 MILLER BONNIE 245-350	10/25/1989	
COMMON AREA	0150003000 EACH UNIT OWNS UNDIVIDED ONE-ELEVENTH	248-645 293-778	9/13/99 6/19/08
5567 A	0150003010 TROYER VAUGHN W. AND INGA A. OR.0174-430	8/2/2004	
5567 B	0150003011 COAST SANDRA S. OR.0126-223	10/23/2002	
5569 A	0150003001 James E. Hershberger OR.185-467	12/2/2005	
5569 B	0150003009 PIONEER TRAILS REALTY, LTD. OR.0090-405	10/12/2001	



LAUREL RUN CONDOMINIUM

Lot 11B, Second Stutzman S.D. located in
Lot 21, 1st Qtr., T-9, R-6 (See Map B-13B)

Scale 1" = 30'

Declaration: Vol. 243, Pg. 778 6-14-1989

Plat Vol. 2, Pg. 211-215

LET IT BE KNOWN THIS MAP HAS BEEN PREPARED AS A REFERENCE GUIDE TO PROPERTY OWNERSHIP. WE BELIEVE THIS INFORMATION TO BE CORRECT AND CURRENT; HOWEVER, IT IS NOT INTENDED FOR ANY LEGAL USE, WHETHER IT BE IN SALES, TRANSFERS, TRADES, LEASES OF ANY TYPE, ETC., AND DO NOT ACCEPT RESPONSIBILITY FOR ERRORS OF ANY NATURE OR OMISSIONS CONTAINED HEREIN.

CONDOMINIUMS

Last Revision: 12/30/2005

B-13C