

Nelson Miller Allotment #1
Plat 2A-162 Platted 7/28/1976

- 1 SCHLABACH MENNO D. AND SARAH R.
216-718 4/8/1982
0.897 ac
- 2 SCHLABACH MENNO D. AND SARAH R. MILLER
195-387 8/23/1979
215-821 12/31/1981
225-391 11/8/1984
0.897 ac
- 3 TROYER FREEMAN W. AND MARY E. TRUSTEE
267-607 2/17/1995
0.989 ac
- 4 MILLER GALEN R. AND SADIE
227-127 5/9/1985
0.897 ac

Nelson Miller Allotment #2
Plat 2A-170 Platted 8/3/1979

- 5 KAUFFMAN ELMO AND KATHRYN
205-796 8/10/1979
0.971 ac
- 6 MILLER, BERNICE M. TRUSTEE
MILLER, STURGIS TRUSTEE
263-528 2/23/1994
263-530 2/23/1994
0.971 ac
- 7 YODER GLENN C. AND GLORIA R.
276-185 11/14/1996
0.98 ac
- 8 TROYER CRIST S. AND HOLLY A. KANDEL
222-932 2/23/1984
244-663 9/14/1989
1.008 ac
- 9 MILLER ADAM S. AND ANNA N.
OR.0062-511 11/16/2000
1.248 ac

Third Nelson Miller Subdivision
Plat 9-170 Platted 8/3/1979

- 10 COBLENTZ RAYMOND B. AND ROSELYN
236-451 9/14/1987
2.0 ac
- 11 SCHROCK SAM J. AND LELA R.
221-195 8/11/1983
4.669 ac
- 12 MILLER RAY M. AND MARY E.
OR.0030-658 4/30/1999
1.358 ac

Nelson Miller Allotment No.5
Plat 16-718 Platted 5/8/1998

- 13 MILLER GALEN R. AND SADIE
OR.0008-996 5/15/1998
1.05 ac
- 14 MILLER GALEN R. AND SADIE
OR.0008-996 5/15/1998
1.051 ac

Raymond M. & Edna Hershberger Allotment No.1
Plat 15-124 Platted 4/11/1997

- 15 HERSHBERGER GLENN E. AND DELORES F.
278-269 5/16/1997
1.145 ac

Marion Stutzman Subdivision
Plat 2-203 Platted 6/22/1987

- 16 MILLER WYMAN R. AND MARIE J.
OR.0056-661 8/10/2000
OR.0057-506 8/25/2000
1.92 ac
- 17 BRENNEMAN MIRIAM K.
OR.0056-669 8/9/2000
OR.0057-506 8/25/2000
3.282 ac

Replat of Lot 2
Plat 2-221 Platted 7/30/1990

- 18 GERBER JANICE S.
OR.0173-1443 1/4/2005
1.33 ac
- 19 BURCH MICHAEL A. AND DEBRA A.
268-447 5/5/1995
1.0 ac

John F. Schrock Allotment No.1
Plat 15-109 Platted 10/21/1996

- 20 SCHROCK JOHN D. AND WANDA
275-885 10/24/1996
277-848 4/15/1997
1.636 ac
- 21 HANNAHS HOUSE, LTD.
282-134 12/24/1997
0.919 ac
- 22 SCHROCK JOHN E. AND MARIE E.
235-748 7/6/1987
1.111 ac
- 23 HANNAHS HOUSE, LTD.
282-134 12/24/1997
1.401 ac
- 24 HANNAHS HOUSE, LTD.
282-134 12/24/1997
1.87 ac

Dutchland Acres No.1
Plat 2A-161 Platted 7/8/1976

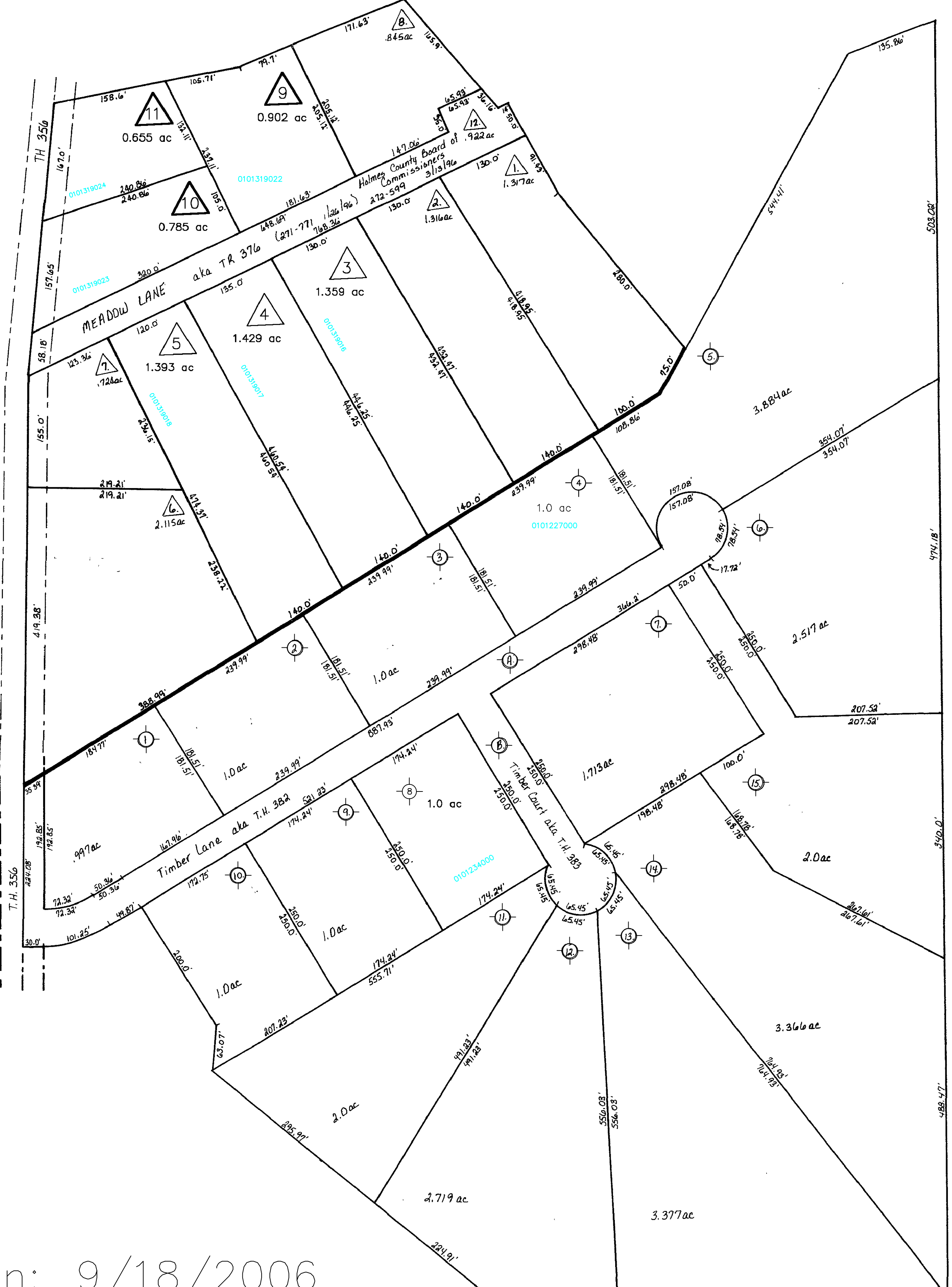
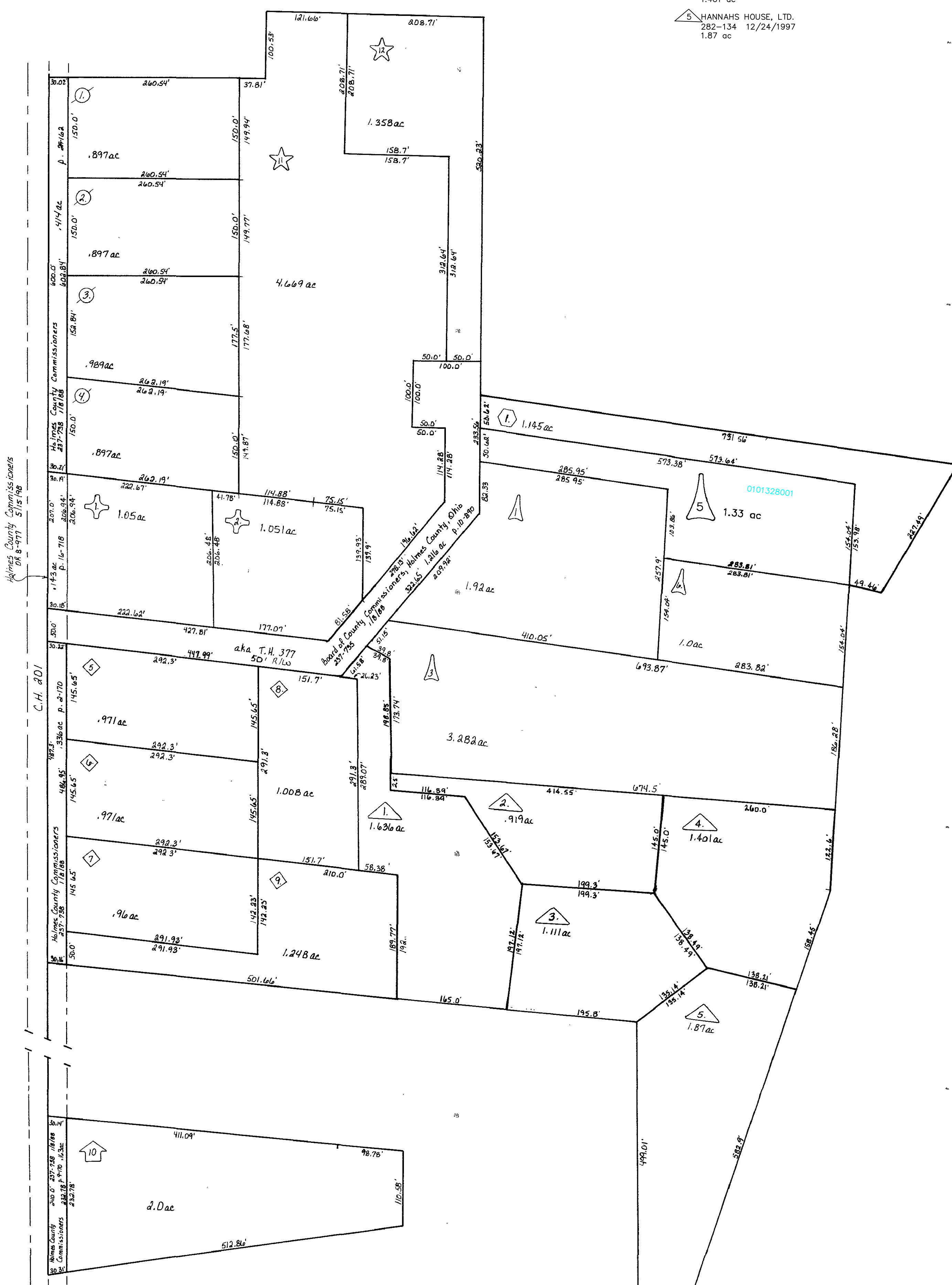
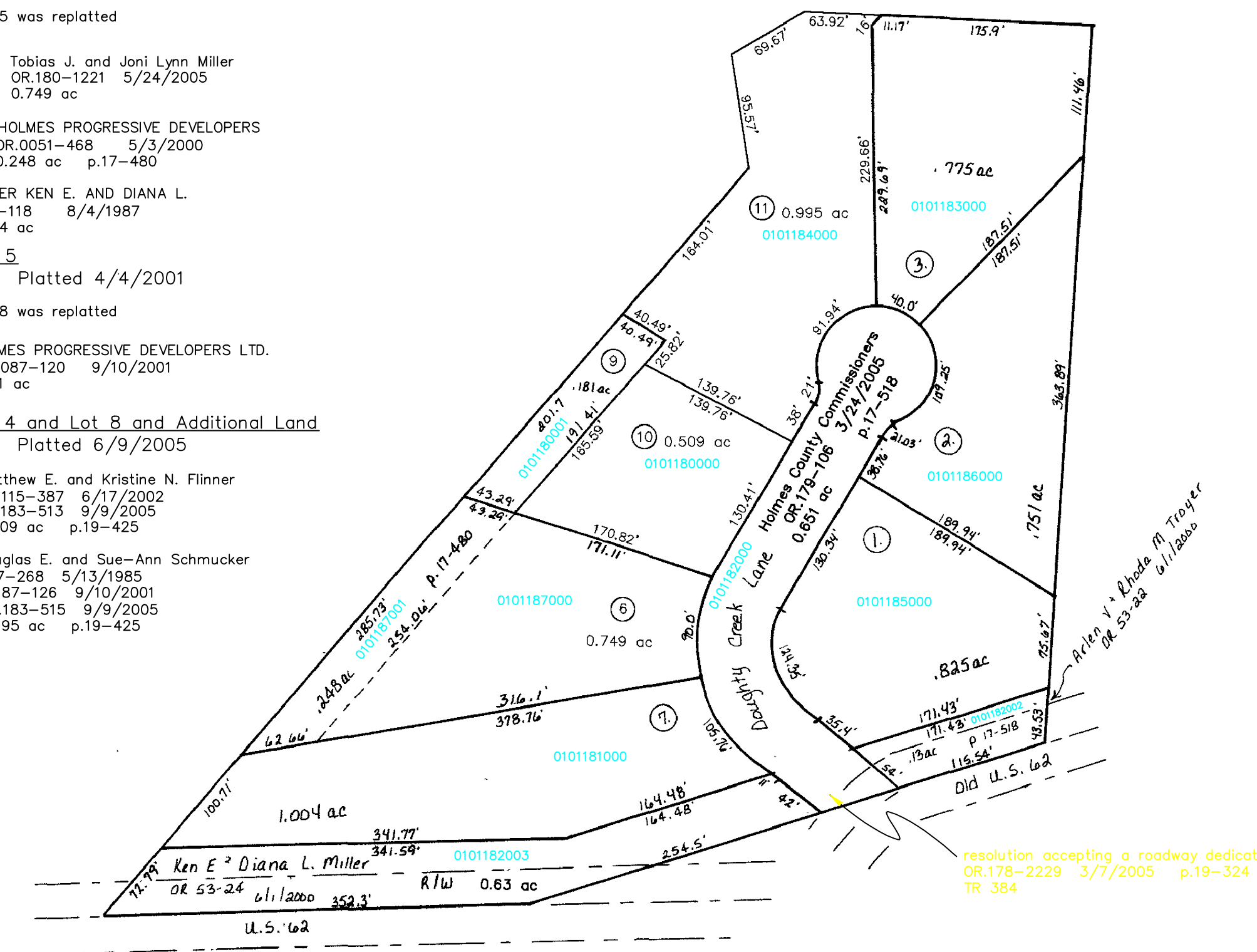
- 25 TROYER ARLEN V. AND RHODA M.
OR.0045-693 1/18/2000
0.825 ac
- 26 TROYER ARLEN V. AND RHODA M.
OR.0045-693 1/18/2000
0.751 ac
- 27 MICHAELS THOMAS L. AND CHERYL D.
274-17 6/21/1996
0.775 ac

Replat of Lot 5
Plat 17-840 Platted 4/4/2001

- 28 Ept Tobias J. and Joni Lynn Miller
OR.180-1221 5/24/2005
0.749 ac

Replat of Lot 4 and Lot 8 and Additional Land
Plat 19-425 Platted 6/9/2005

- 29 W HOLMES PROGRESSIVE DEVELOPERS
OR.0001-468 5/3/2000
0.248 ac p.17-480
- 30 MILLER KEN E. AND DIANA L.
236-118 8/4/1988
1.004 ac
- 31 Douglas E. and Sue-Ann Schmucker
227-288 5/3/1988
OR.87-128 9/10/2001
OR.183-515 9/9/2005
0.509 ac p.19-425
- 32 Douglas E. and Sue-Ann Schmucker
227-288 5/3/1988
OR.87-128 9/10/2001
OR.183-515 9/9/2005
0.995 ac p.19-425



The Meadows Allotment No.1
Plat 2-251 Platted 8/24/1995

- 1 SWARTZTRUBER LYNN D. AND CHRISTINA
270-141 9/5/1995
1.317 ac
- 2 MILLER A. LEE AND DEBRA S.
OR.0025-102 1/27/1999
1.316 ac
- 3 MAST MICHAEL L. AND BRIDIO
OR.0089-231 10/1/2001
OR.0175-2948 10/22/2004
1.358 ac
- 4 MILLER CAROL ANNE
OR.0175-3169 10/26/2004
1.429 ac
- 5 Arthur R. and Constance A. Flock
OR.179-3312 5/6/2005
1.393 ac p.2-251
- 6 STUTZMAN JEFFREY L. AND JANET L.
OR.0043-854 12/15/1999
2.115 ac
- 7 YODER KURT AND RUEY
OR.0008-143 12/31/2001
0.724 ac
- 8 KALMAN JOHN S. AND SUZANNE L.
OR.0020-293 11/16/1998
0.845 ac
- 9 MILLER BRIAN R. AND BRENDA Y.
OR.0169-1080 1/7/2004
0.902 ac
- 10 HUMMEL BEAU E. AND NICOLE S.
OR.0169-78 12/22/2003
0.785 ac
- 11 HUMMEL BARRY D. AND BRENDA L.
OR.0169-80 12/22/2003
0.855 ac
- 12 HOLMES COUNTY BOARD OF COMMISSIONERS
272-599 3/13/1996
0.922 ac

Golden Valley Estates Subdivision, First Add.
Plat 9-53, 54, 55 Platted 12/21/1979

- 1 MAST ALLAN R. AND MARY
209-578 5/29/1980
0.997 ac
- 2 GRAY LARRY D. AND NANCY J.
248-219 10/31/1990
1.0 ac
- 3 GERBER ERIC SCOTT AND CAROL SUE
244-434 8/17/1989
1.0 ac
- 4 Wendy L. Kandel
OR.35-305 7/19/1999
OR.191-2448 9/18/2006
1.0 ac
- 5 MILLER WAYNE A. AND SUSIE E.
241-473 12/5/1988
3.884 ac
- 6 SISSON DAVID C. AND JILL A.
270-95 8/29/1995
2.517 ac
- 7 MAST JERRY L. AND MARY ELLEN
209-580 5/29/1980
231-400 6/9/1986
1.713 ac
- 8 Daniel R. and Melissa Raber
OR.184-638 10/20/2005
1.0 ac
- 9 SCHMUCKER WESLEY J. AND KRISTINE L.
239-887 8/2/1988
1.0 ac
- 10 MILLER TIMOTHY J. AND GINA G.
244-868 10/2/1989
1.0 ac

Golden Valley Estates Subdivision, Second Addition
Plat 2-183, 184 Platted 11/30/1984

- 11 YODER JOANNA J. TRUSTEE
261-874 10/12/1993
2.0 ac
- 12 MISHLER DUANE A. AND GLORIA
234-265 2/18/1987
2.719 ac
- 13 KOSER TAMELA L.
250-658 3/18/1991
3.377 ac
- 14 KOSER TAMELA L.
249-357 11/7/1990
3.366 ac
- 15 STERRETT GARY L. AND PENELOPE
259-446 4/7/1993
2.0 ac
- 16 Holmes County Commissioners
229-126 10/24/1985
1.529 ac
- 17 Holmes County Commissioners
229-126 10/24/1985
0.462 ac

Last Revision: 9/18/2006

