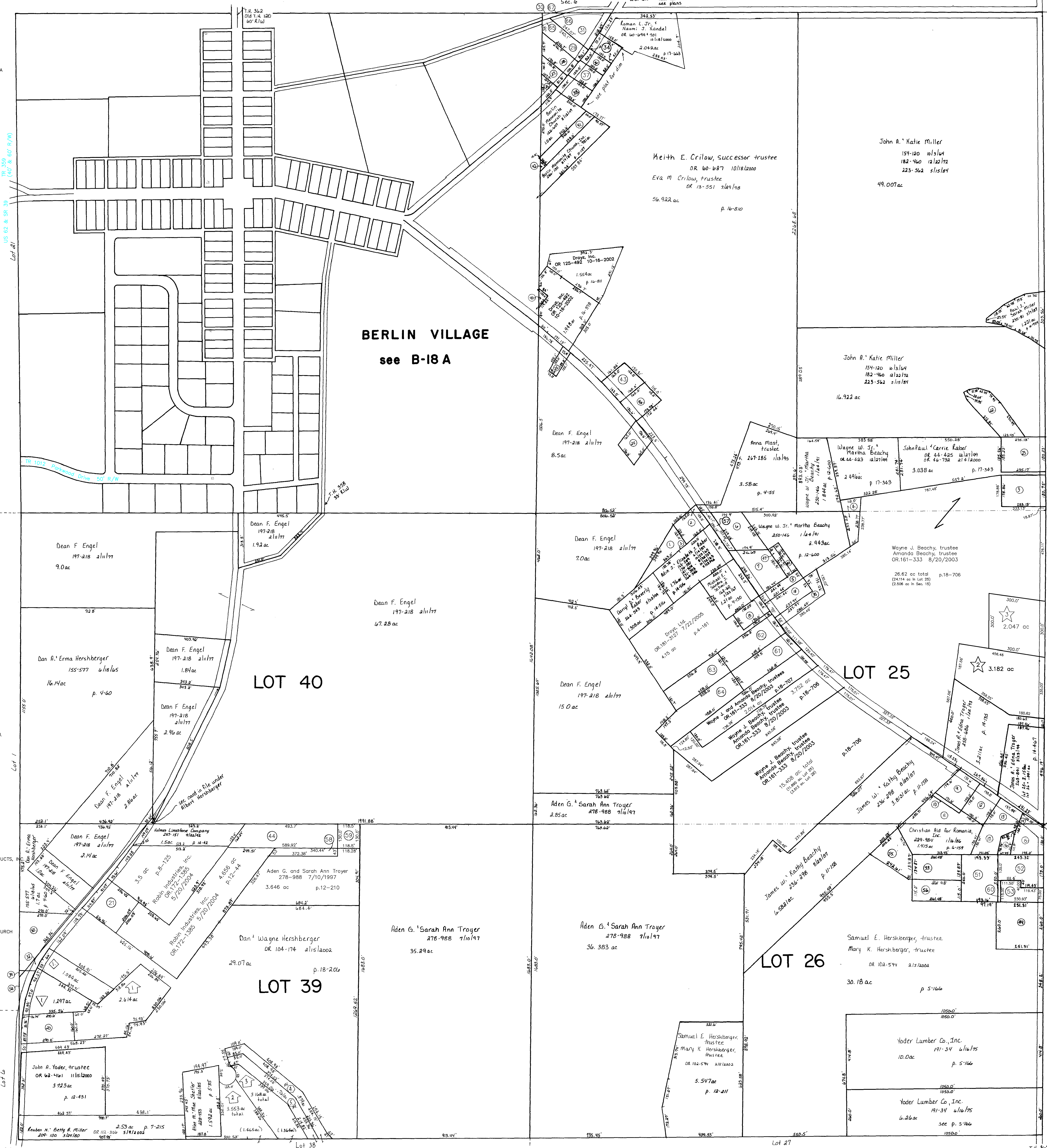


- 1 YODER WILLIAM JR. AND MARY A. 186-644 3/22/1974 0.5 ac
- 2 YODER WILLIAM JR. AND MARY A. 186-644 3/22/1974 0.4 ac
- 3 BEACHY EDWARD W. AND BRENDA 263-500 2/22/1994 0.962 ac p.14-439
- 4 BEACHY WAYNE W. JR. AND MARTHA OR.0044-421 12/27/1999 0.43 ac p.17-343
- 5 THREE BEE COMPANY OR.0050-29 4/6/2000 0.277 ac p.17-455
- 6 HOCHSTETLER ELI J. AND VESTA 237-730 1/8/1988 1.0 ac
- 7 THREE BEE COMPANY 237-474 12/21/1987 1.0 ac p.8-608
- 8 SCHMID MICHAEL E. AND SANDRA J. 183-853 4/24/1973 186-279 2/1/1974 0.392 ac p.4-87
- 9 CHRISTIAN AID MINISTRIES OR.0091-152 10/19/2001 0.013 ac p.4-74
- 10 CHRISTIAN AID MINISTRIES OR.0091-152 10/19/2001 0.079 ac p.8-544
- 11 CHRISTIAN AID FOR ROMANIA, INC. 229-984 1/16/1986 0.786 ac p.6-159
- 12 TROYER DAVID N. AND ERMA 271-846 2/1/1996 0.562 ac p.4-57
- 13 MULLET STEVE D. AND REBECCA E. 249-472 11/15/1990 0.416 ac p.6-159
- 14 HOLMES LIMESTONE COMPANY 201-60 2/3/1978 0.26 ac p.7-338
- 15 HOLMES LIMESTONE COMPANY 201-60 2/3/1978 0.41 ac p.7-338
- 16 HOLMES LIMESTONE CO. 233-609 12/11/1986 0.1723 ac p.10-666
- 17 MULLET STEVE D. AND REBECCA 249-472 11/15/1990 0.5307 ac p.6-159
- 18 THREE BEE COMPANY OR.0050-32 4/6/2000 0.452 ac p.17-455
- 19 HERSHBERGER, SAMUEL E. TRUSTEE HERSHBERGER, MARY K. TRUSTEE OR.0102-594 2/5/2002 0.369 ac p.10-723
- 20 HERSHBERGER DAN AND WAYNE OR.0160-648 8/14/2003 1.033 ac p.11-12
- 21 ROBIN INDUSTRIES, INC. OR.0172-1589 5/20/2004 1.0 ac p.8-368
- 22 MILLER JOHN A. AND KATIE 212-941 5/15/1981 223-562 5/15/1984 0.85 ac p.6-52
- 23 RABER JOHN PAUL AND CARRIE OR.0044-425 12/27/1999 OR.0046-732 2/4/2000 1.0 ac p.8-92
- 24 ENGEL DEAN FRANKLIN 221-169 7/26/1983 222-260 12/6/1983 0.5 ac
- 25 MAST TROY D. AND ANDREA OR.0116-834 7/3/2002 0.18 ac p.17-436
- 26 JEDER, INC. 244-181 7/21/1989 0.15 ac
- 27 MILLER LORIS D. AND KAREN L. OR.0039-618 9/27/1999 0.25 ac S.F.T.
- 28 CLARK ROGER L. AND BARBARA A. 235-45 5/1/1987 0.48 ac
- 29 Carol Ann Alberts 134-533 6/27/1957 OR.117-862 7/18/2002 0.4749 ac
- 30 Jeder, Inc. 241-767 12/29/1988 0.0076 ac p.4-137
- 31 Clyde E. and Mary K. Sundheimer 162-507 5/28/1987 OR.69-778 3/16/2001 0.622 ac p.4-137
- 32 HERSHBERGER ALBERT B. AND REBECCA A. TR. RABER OR.0104-171 2/15/2002 0.065 ac p.18-206
- 33 CHRISTIAN AID FOR ROMANIA, INC. 234-777 4/7/1987 0.81 ac p.10-722
- 34 KANDEL ROMAN L. JR. AND NAOMI J. OR.0169-1319 1/9/2004 0.32 ac p.16-604
- 35 BEACHY WAYNE W. JR. AND MARTHA OR.0050-25 4/6/2000 0.466 ac p.17-455
- 36 RAMSEY RICHARD E. AND GERTRAUD 159-279 8/5/1966 242-466 3/3/1989 OR.0048-550 3/10/2000 0.29 ac
- 37 SNYDER JOAN AND DONALD OR.0166-258 9/17/2003 OR.0175-2774 10/12/2004 0.36 ac
- 38 OAK MGT., INC. 269-593 7/25/1995 0.36 ac
- 39 OWENS-ILLINOIS PRESCRIPTION PRODUCTS, INC. OR.0055-486 7/16/2000 0.009 ac p.17-563
- 40 MILLER BETTY 131-131 5/16/1955 218-486 10/13/1982 246-702 4/9/1990 0.06 ac
- 41 BERLIN MENNONITE CHURCH 128-211 6/9/1953 0.4 ac
- 42 TRUSTEES OF BERLIN MENNONITE CHURCH 204-75 11/20/1978 0.02 ac p.8-343
- 43 SCHLABACH KATIE C. AND ELLA C. AND NORMAN C. 269-442 10/25/1995 OR.0057-982 9/5/2000 OR.0172-1132 5/18/2004 OR.0172-1135 5/18/2004 0.543 ac p.14-242
- 44 HERSHBERGER BARBARA 215-35 10/19/1981 OR.0179-1884 11/19/2994 1.816 ac p.8-814
- 45 SWARTZENTRUBER CARL AND JUDI 228-359 10/4/1985 0.49 ac p.5-40
- 46 THREE BEE COMPANY 250-869 4/8/1991 0.125 ac p.12-634
- 47 THREE BEE COMPANY 254-522 2/19/1992 0.125 ac p.12-866
- 48 WINDMILL VILLAGE, LLC OR.0123-487 9/23/2002 1.5 ac p.14-524
- 49 HERSHBERGER, ALBERT B. RABER, REBECCA A. 268-400 5/3/1995 0.991 ac
- 50 MULLET STEVE D. AND REBECCA 274-616 8/2/1996 1.109 ac p.16-174
- 51 Wayne M. and Ada W. Troyer 274-776 8/15/1996 0.865 ac p.16-193
- 52 LECLAIR PHILIAS AND COLETTE OR.0155-325 7/1/2003 0.5 ac p.16-174
- 53 OWENS-ILLINOIS PRESCRIPTION PRODUCTS, INC. OR.0055-489 7/18/2000 0.315 ac p.17-561
- 54 CHRISTIAN AID MINISTRIES PKA CHRISTIAN AID FOR ROMANIA, INC. OR.0123-543 9/24/2002 OR.0124-908 10/8/2002 0.759 ac p.18-391
- 55 Hershberger, SAMUEL E. TRUSTEE AND MARY K. TRUSTEE OR.0123-545 9/24/2002 0.69 ac p.18-391
- 56 HOCHSTETLER ELI J. AND VESTA OR.0161-330 8/20/2003 0.215 ac p.18-706



- 0101365006 HERSHBERGER BARBARA OR.0171-1906 4/19/2004 OR.0176-1884 11/19/2004 0.354 ac p.19-46
- 0101253001 TROYER ADEN G. AND SARAH ANN OR.0171-1904 4/19/2004 0.354 ac p.19-46
- 0100845001 Philius and Colette LeClair OR.179-541 3/30/2005 0.036 ac p.19-352
- 0100894000 Droyz, Ltd. OR.181-3127 7/22/2005 1.0 ac p.4-161
- 0100895000 Droyz, Ltd. OR.181-3127 7/22/2005 1.0 ac p.4-8
- 0100893000 Droyz, Ltd. OR.181-3127 7/22/2005 1.0 ac p.4-130
- 0100892000 Droyz, Ltd. OR.181-3127 7/22/2005 1.347 ac p.5-3
- 010002001 Berlin Township Trustees OR.184-2602 11/10/2005 0.0251 ac p.2-411
- 0100656001 Berlin Township Trustees OR.184-2629 11/10/2005 0.078 ac p.2-411
- 010089001 Berlin Township Trustees OR.184-2620 11/10/2005 0.0424 ac p.2-411

T.M. 366  
Old T.M. 156  
Old Klu '33' E.Lu

Ben A. Hershberger Allotment No.1  
Plot 15-20 Platted 12/20/1993

0000000000 BERLIN NATURAL BAKERY, INC.  
252-978 12/29/1993  
1.297 ac

Ben A. Hershberger Allotment No.2  
Plot 2-295 Platted 4/20/1999

0000000000 Holmes Custom Moulding, Ltd.  
OR.0044-246 12/21/1999  
OR.0044-253 12/21/1999  
2.814 ac

Hershberger Marilyn  
OR.0038-693 9/13/1999  
3.553 ac

Hershberger Linda  
OR.0038-691 9/13/1999  
3.168 ac

Ben A. Hershberger Allotment No.2  
Plot 2-340 Platted 12/18/2001

0000000000 HERSHBERGER BENJAMIN JR.  
OR.0096-842 12/20/2001  
2.517 ac

Ben A. and Ada Hershberger  
211-447 11/17/1980  
20.065 ac

Sec. 15

H.M. Allotment No.1  
Plot 16-917 Platted 11/13/1998

0000000000 HOLMES CUSTOM MOLDING  
OR.0020-688 11/19/1998  
1.084 ac

Wayne J. Beachy Allotment No.1  
Replat and Additional Land  
Plot 18-840 Platted 12/12/1993

0100036000 East Holmes Fire & EMS  
District  
OR.0168-2974 12/15/2003  
3.182 ac

Wayne J. Beachy Allotment No.1  
First Addition  
Plot 19-300 Platted 4/28/2005

0100035000 Kenneth and Edna Mae Troyer  
OR.180-474 5/13/2005  
2.047 ac p.19-380

T.M. 367  
Old T.M. 156  
Old Klu '33' E.Lu

Last Revision: 11/10/2005

**T-9, R-5, 3rd. Qtr.**  
**Lots 25, 26, 39, 40**  
**Sec. 15**  
**BERLIN TWP.**  
**SCALE: 1"=200'**

LET IT BE KNOWN, THIS MAP HAS BEEN PREPARED AS A REFERENCE GUIDE TO PROPERTY OWNERSHIP. WE BELIEVE THIS INFORMATION TO BE CORRECT AND CURRENT, HOWEVER, IT IS NOT INTENDED FOR ANY LEGAL USE, WHETHER IT BE IN SALES, TRANSFERS, TRADES, LEASES OF ANY TYPE, ETC. AND DO NOT ACCEPT RESPONSIBILITY FOR ERRORS OF ANY NATURE OR OMISSIONS CONTAINED HEREIN.

**B-183**