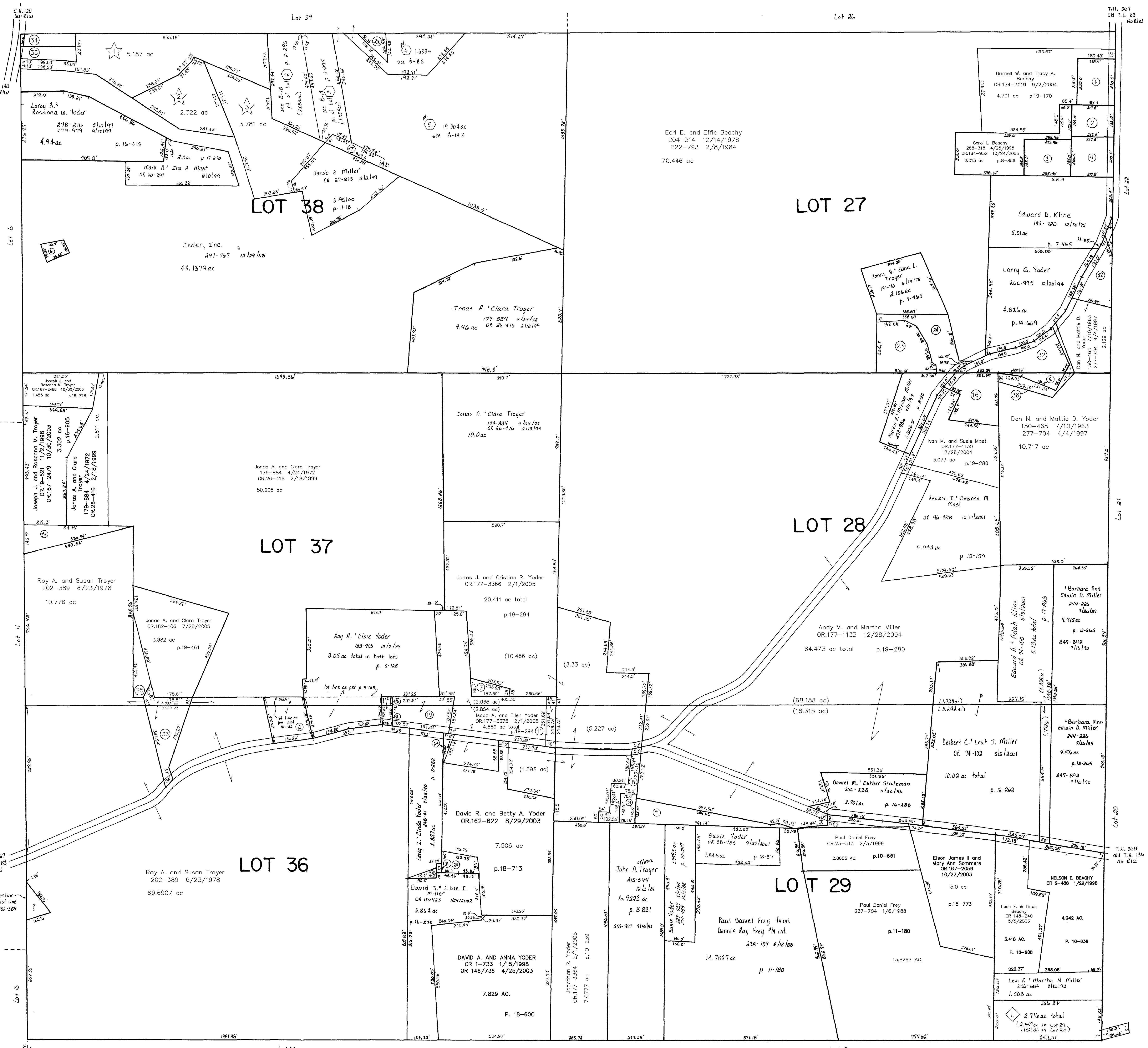


- 1 MILLER DARREL W. AND SUSAN
OR.0039-286 9/22/1999
OR.0039-290 8/22/1999
1.0 ac p.8-234
- 2 TROYER JONAS A. AND EDNA
202-469 6/29/1978
1.0 ac p.8-234
- 3 TROYER JONAS A. AND EDNA L.
185-403 10/26/1973
1.0 ac p.7-145
- 4 HERSHBERGER, SAMUEL E. TRUSTEE
HERSHBERGER, MARY K. TRUSTEE
OR.0102-594 2/5/2002
0.26 ac p.8-161
- 5 ALBERTS CAROL ANN
226-533 3/18/1985
OR.0117-884 7/18/2002
0.2341 ac p.10-379
- 6 Isaac A. and Ellen Yoder
OR.177-3369 2/1/2005
0.281 ac p.19-294
- 7 Jonathan R. Yoder
OR.177-3364 2/1/2005
0.591 ac p.19-294
- 8 YODER SUSIE
223-436 5/4/1984
241-459 12/5/1984
1.1243 ac p.10-247
- 9 FREY PAUL DANIEL
OR.0025-513 2/3/1999
0.3585 ac p.10-310
- 10 Jonas J. and Cristina R. Yoder
OR.177-3366 2/1/2005
0.281 ac p.19-294
- 11 YODER ROY A. AND ELSIE
242-154 2/1/1989
207-655 11/1/1979
275-103 9/4/1996
0.58 ac
- 12 RABER, SARAH M.
YODER, ISAAC A. AND ELLEN
129-597 7/24/1954
207-655 11/1/1979
275-103 9/4/1996
0.5 ac
- 13 RABER, SARAH M.
YODER, ISAAC A. AND ELLEN
129-597 7/24/1954
207-655 11/1/1979
275-103 9/4/1996
0.5 ac
- 14 Mary K. Hershberger, trustee
Samuel E. Hershberger, trustee
OR.102-594 2/5/2002
1.368 ac p.8-161
- 15 YODER ROY A. AND ELSIE
188-905 10/7/1974
0.12 ac p.5-128
- 16 YODER ROY A. AND ELSIE
188-905 10/7/1974
0.04 ac p.5-128
- 17 Leroy I. and Cinda Yoder
OR.177-3373 2/1/2005
1.169 ac p.19-294
- 18 YODER LEROY I. AND CINDA
248-41 7/25/1990
0.096 ac p.12-481
- 19 UNKNOWN OWNER
MILLER, DAVID J. AND ELSIE I.
OR.0118-423 7/24/2002
0.038 ac p.12-481
- 20 YODER JERRY A. AND LISA R.
273-544 5/17/1996
278-255 5/15/1997
0.971 ac p.18-105
- 21 TROYER JAMES R. AND KATIE R.
278-773 6/28/1997
281-706 12/5/1997
OR.0173-3264 7/21/2004
OR.0177-2919 1/24/2005
1.543 ac p.16-461
- 22 TROYER JONAS A. AND EDNA L.
185-403 10/26/1973
1.08 ac p.7-145
- 23 Roy A. and Susan Troyer
OR.18-515 11/2/1998
0.424 ac p.16-905
- 24 TROYER ROY A. AND SUSAN
OR.0019-515 11/2/1998
0.857 ac p.18-905
- 25 MILLER JACOB E.
OR.0042-123 11/12/1999
0.305 ac p.17-299
- 26 HERSHBERGER DAN AND WAYNE
OR.0104-174 2/15/2002
0.186 ac p.18-206
- 27 MILLER DAVID J. AND ELSIE I.
OR.0120-389 8/14/2002
0.059 ac p.18-355
- 28 MILLER DAVID J. AND ELSIE I.
OR.0122-372 9/9/2002
0.342 ac p.18-355
- 29 TROYER JOHN A. AND ALMA
OR.0124-875 10/8/2002
0.26 ac p.18-406
- 30 Mary K. Hershberger, trustee
Samuel E. Hershberger, trustee
OR.102-594 2/5/2002
1.368 ac p.8-161
- 31 Jonas A. and Clara Troyer
OR.182-109 7/28/2005
1.283 ac p.19-461
- 32 Eli A. and Esta Miller
232-785 10/17/1986
0.418 ac p.3-47 B
- 33 Eli A. and Esta Miller
190-686 5/12/1975
0.56 ac p.7-448
- 34 Samuel E. Hershberger, trustee
Mary Hershberger, trustee
OR.183-1912 9/27/2005
0.455 ac total (lot 27=0.082 ac, lot 28=0.373 ac)



- 4 Sand Knob
Plat 18-111 Plotted 10/31/2001
- 5 BURKHOLDER LEROY A. AND ANNA
OR.0092-836 11/9/2001
2.716 ac
- 6 Ben A. Hershberger Allotment No. 2
Plat 2-295 Plotted 4/20/1999
- 7 Marilyn Hershberger
OR.38-693 9/13/1999
3.553 ac total
- 8 Linda Hershberger
OR.38-691 9/13/1999
3.168 ac total
- 9 Ben A. Hershberger Allotment No. 2 First Addition
Plat 2-340 Plotted 12/18/2001
- 10 Benjamin Hershberger, Jr.
OR.96-842 12/20/2001
2.517 ac total
- 11 Ben A. and Ada Hershberger
211-447 11/17/1980
20.065 ac total
- 12 Swartz Acres Subdivision
Plat 2-408 Plotted 10/11/2005
- 13 Eli A. and Esta Miller
190-696 5/12/1975
232-785 10/17/1986
278-107 5/6/1997
5.187 ac
- 14 Jacob E. and Miriam Miller
OR.183-1521 9/21/2005
OR.183-3418 10/14/2005
2.322 ac
- 15 Eli A. and Esta Miller
278-107 5/6/1997
OR.27-211 3/2/1999
3.791 ac

T-9, R-5, 3rd. Qtr.
Lots 27, 28, 29, 36, 37, 38
BERLIN TWP.
SCALE: 1"=200'
Last Revision: 10/24/2005

LET IT BE KNOWN, THIS MAP HAS BEEN PREPARED AS A REFERENCE GUIDE TO PROPERTY OWNERSHIP. WE BELIEVE THIS INFORMATION TO BE CORRECT AND CURRENT, HOWEVER, IT IS NOT INTENDED FOR ANY LEGAL USE, WHETHER IT BE IN SALES, TRANSFERS, TRADES, LEASES OF ANY TYPE, ETC., AND DO NOT ACCEPT RESPONSIBILITY FOR ERRORS OF ANY NATURE OR OMISSIONS CONTAINED HEREIN.