

Heidelberg Manor Estates at Glead's Balm  
Plat 13-124 Platted 11/26/1990

SPRITO DONALD PATRICK  
248-47 1/4/1993  
1.661 ac  
REISE TIMOTHY N. AND JILL R.  
279-615 8/20/1997  
1.615 ac

0100247005 PRITCHARD JAMES D. AND BARBARA  
OR.0177-373 12/20/2004  
1.59 ac

TORRENCE KATHLEEN  
248-257 2/20/1990  
1.575 ac

TORRENCE KATHLEEN  
248-257 2/20/1990  
1.56 ac

Heidelberg Manor Estates No. 2 at Glead's Balm  
Plat 15-113 Platted 12/30/1996

TORRENCE KATHLEEN  
288-47 4/3/1995  
0.77 ac

TORRENCE KATHLEEN  
288-47 4/3/1995  
0.787 ac

TORRENCE KATHLEEN  
288-47 4/3/1995  
0.765 ac

TORRENCE KATHLEEN  
288-47 4/3/1995  
0.763 ac

TORRENCE RYAN C. AND YVONNE J.  
276-687 12/31/1996  
1.309 ac

Victoria Estates II  
Plat 17-217 Platted 8/26/1999

0100247010 CONN MICHAEL W. AND REBECCA R.  
251-599 6/6/1991  
OR.0044-306 12/22/1999  
OR.0044-308 12/22/1999  
OR.0171-1113 4/8/2004  
2.139 ac

CONN WILFORD D.  
250-691 3/20/1991  
258-444 1/4/1993  
OR.0044-304 12/22/1999  
OR.0044-312 12/22/1999  
5.888 ac

CONN SANDRA M.  
OR.0044-315 12/22/1999  
1.574 ac

LEE THOMAS C. AND DAWN L.  
OR.0044-310 12/22/1999  
2.499 ac

Victoria Estates I First Addition  
Plat 19-403 Platted 5/25/2005

0100247032 David E. and Carol M. Conn  
OR.182-341 8/29/2005  
2.0 ac p.19-403

0100247018 Wilford D. Conn  
OR.78-355 5/23/1997  
3.0 ac p.19-403

Safe Seven Subdivision  
Plat 17-469 Platted 4/25/2000

ANDERSON SAFE PROPERTIES, LTD.  
OR.0100-371 1/18/2002  
2.5 ac

Pine Cove Subdivision  
Plat 2-351 Platted 8/6/2002

0100247004 John A. Thern  
Debra E. Shank-Thern  
OR.0183-2508 10/6/2005  
2.553 ac

0100247025 LAMBERT JANCIE M. TRUSTEE  
OR.0167-2500 10/30/2003  
2.226 ac

TR 360 (60' R/W)

KAUFMAN DAVID ANTHONY AND JULIE ANN  
OR.0128-788 11/15/2002  
3.0 ac

SCHLABACH RUTH F.  
OR.0158-458 7/28/2003  
1.6 ac

SCHLABACH STEPHEN R.  
OR.0097-502 12/27/2001  
OR.0097-502 12/27/2001  
1.119 ac

SCHLABACH STEPHEN R.  
OR.0097-499 12/27/2001  
OR.0097-502 12/27/2001  
1.031 ac

SCHLABACH STEPHEN R.  
OR.0097-499 12/27/2001  
OR.0097-502 12/27/2001  
1.382 ac

MULLET BRIAN L. AND RENA K.  
OR.0121-65 8/22/2002  
2.25 ac

Asgard Subdivision, First Addition  
Plat 19-166 Platted 8/26/2004

0100201016 Jacob J. and Erma E. Beachy, co-trustees  
OR.185-1043 12/8/2005  
3.936 ac

0100201019 Jacob J. and Erma E. Beachy, co-trustees  
OR.185-1043 12/8/2005  
1.395 ac

Jerry Anderson Allotment No.1  
Plat 15-125 Platted 4/17/1997

ANDERSON DENNIS R. AND KIMBERLY S.  
277-979 4/24/1997  
1.222 ac

Paul Hochstetler Allotment No.1  
Plat 15-23 Platted 1/27/1994

ANDERSON JERRY R. AND JERRI L.  
263-299 1/28/1994  
1.6093 ac

Paul Hochstetler Allotment No.2  
Plat 16-679 Platted 3/26/1998

KAUFFMAN, JOSEPH R. and YODER, MAE  
OR.0007-588 4/21/1998  
2.0 ac

Paul Hochstetler Allotment No.3  
Plat 17-419 Platted 3/9/2000

YODER JEFF L. AND DAWN R.  
OR.0050-434 4/13/2000  
1.864 ac

T.H. 353 Old T.H. 207 40' E/W

T.H. 359 Old T.H. 207 40' E/W

C.H. 201 60' E/W

C.H. 203 60' E/W

C.H. 205 60' E/W

C.H. 207 60' E/W

C.H. 209 60' E/W

C.H. 211 60' E/W

C.H. 213 60' E/W

C.H. 215 60' E/W

C.H. 217 60' E/W

C.H. 219 60' E/W

C.H. 221 60' E/W

C.H. 223 60' E/W

C.H. 225 60' E/W

C.H. 227 60' E/W

C.H. 229 60' E/W

C.H. 231 60' E/W

C.H. 233 60' E/W

C.H. 235 60' E/W

C.H. 237 60' E/W

C.H. 239 60' E/W

C.H. 241 60' E/W

C.H. 243 60' E/W

C.H. 245 60' E/W

C.H. 247 60' E/W

C.H. 249 60' E/W

C.H. 251 60' E/W

C.H. 253 60' E/W

C.H. 255 60' E/W

C.H. 257 60' E/W

C.H. 259 60' E/W

C.H. 261 60' E/W

C.H. 263 60' E/W

C.H. 265 60' E/W

C.H. 267 60' E/W

C.H. 269 60' E/W

C.H. 271 60' E/W

C.H. 273 60' E/W

C.H. 275 60' E/W

C.H. 277 60' E/W

C.H. 279 60' E/W

C.H. 281 60' E/W

C.H. 283 60' E/W

C.H. 285 60' E/W

C.H. 287 60' E/W

C.H. 289 60' E/W

C.H. 291 60' E/W

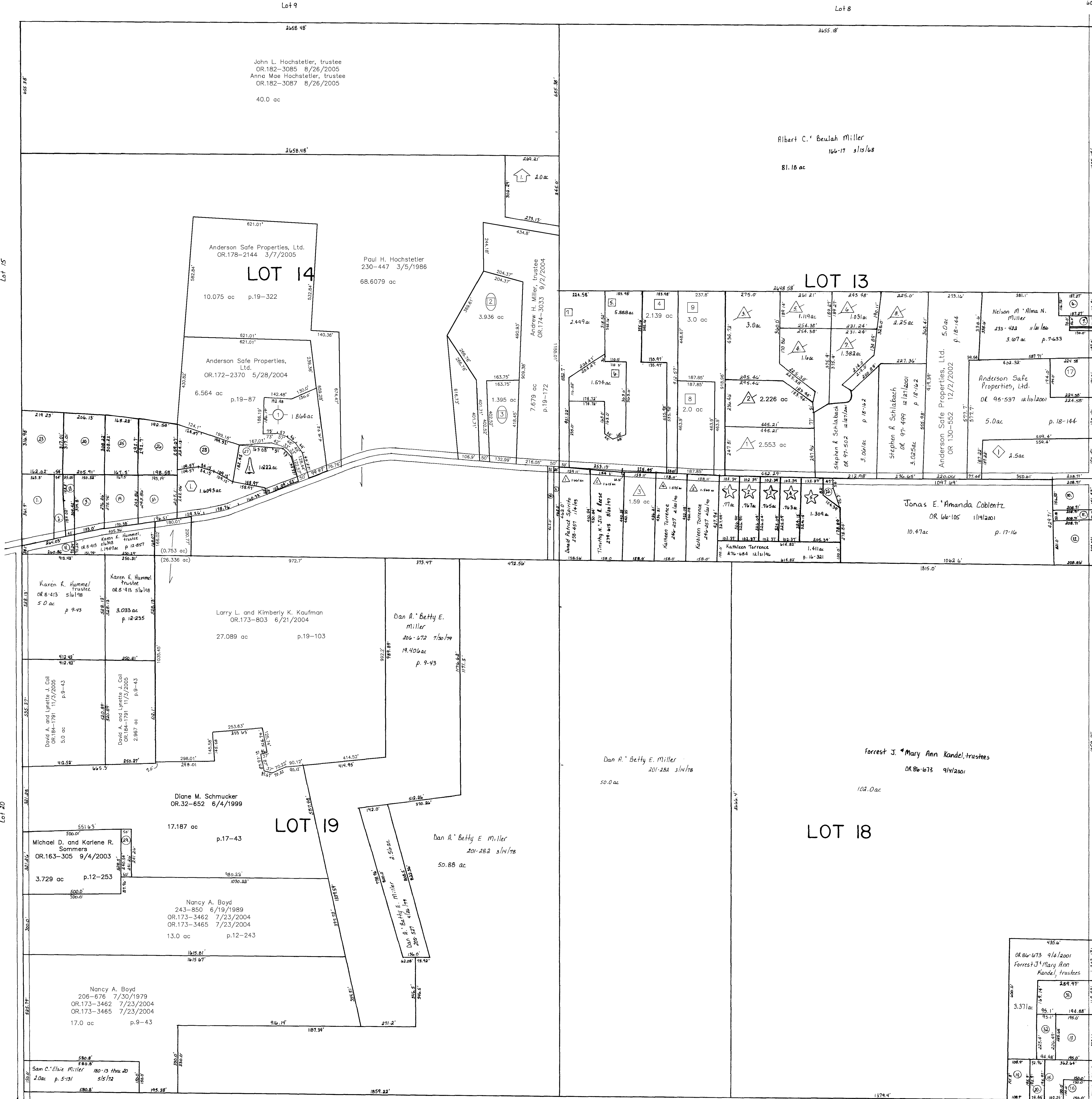
C.H. 293 60' E/W

C.H. 295 60' E/W

C.H. 297 60' E/W

C.H. 299 60' E/W

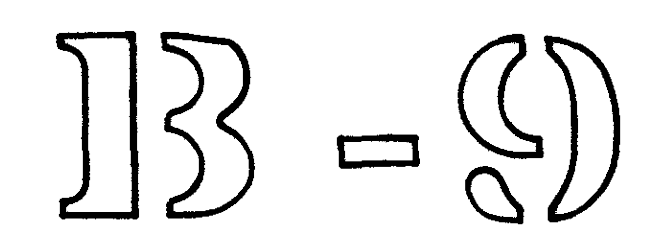
C.H. 301 60' E/W



- 1 MAST GERALD W. AND DIANE STROMME  
236-916 10/30/1987  
OR.0074-271 5/7/2001  
1.302 ac p.4-6
- 2 MAST GERALD W. AND DIANE STROMME  
236-916 10/30/1987  
OR.0074-271 5/7/2001  
0.432 ac p.5-8
- 3 TROYER KENNETH N. AND DEBORAH ANN  
254-13 1/2/1992  
1.0 ac p.7-495
- 4 HUMMEL KAREN K. TRUSTEE  
OR.0008-413 5/6/1998  
0.3976 ac p.10-791
- 5 MILLER DAN A. AND BETTY E.  
201-282 3/14/1978  
0.25 ac
- 6 YODER JOSEPH W. AND SALLY ANN  
249-66 10/16/1990  
0.5 ac p.8-194
- 7 YODER JOSEPH W. AND SALLY ANN  
249-66 10/16/1990  
0.168 ac
- 8 YODER JOSEPH W. AND SALLY ANN  
249-66 10/16/1990  
0.4896 ac p.12-893
- 9 YODER JOSEPH W. AND SALLY ANN  
249-66 10/16/1990  
0.02984 ac p.5-28
- 10 TROYER SAMUEL J. AND KAREN K.  
158-447 5/24/1986  
0.75 ac p.3-358
- 11 TROYER SAMUEL J. AND KAREN K.  
173-490 4/27/1970  
0.25 ac p.5-35
- 12 YODER DAVID D. AND MARY E.  
176-694 6/6/1971  
253-594 11/26/1991  
1.08 ac p.5-79
- 13 MARTIN JAMES L. AND JANE D.  
241-244 11/15/1988  
241-246 11/15/1988  
1.01 ac p.5-174
- 14 MILLER W. GERALD AND PEGGY L.  
158-438 5/23/1966  
254-971 3/26/1992  
0.4896 ac p.12-893
- 15 MILLER IDA M.  
151-372 11/7/1963  
203-438 9/27/1978  
0.34 ac p.4-10
- 16 A. Louise Hershberger  
OR.181-1088 7/9/2005  
0.34 ac p.4-10
- 17 Brenda L. Beachy  
OR.185-2349 12/23/2005  
1.0 ac p.12-195
- 18 TROYER KENNETH N. AND DEBORAH ANN  
OR.181-1088 7/9/2005  
0.34 ac p.12-828
- 19 WESSE CARL E. AND MARY E.  
254-429 2/6/1992  
1.0 ac p.12-859
- 20 MILLER W. GERALD AND PEGGY L.  
254-973 3/26/1992  
0.3316 ac p.12-893
- 21 YODER THOMAS C. AND ANGELA D.  
OR.0137-757 2/5/2003  
1.0 ac p.12-940
- 22 TORRENCE RYAN C. AND YVONNE J.  
OR.0074-271 5/7/2001  
1.588 ac p.16-171
- 23 MAST GERALD W. AND DIANE STROMME  
274-538 7/30/1996  
OR.0074-271 5/7/2001  
1.588 ac p.16-171
- 24 TROYER KENNETH N. AND DEBORAH ANN  
274-540 7/30/1996  
1.126 ac p.17-774
- 25 WESSE CARL E. AND MARY E.  
274-609 8/3/1996  
1.155 ac p.16-171
- 26 YODER THOMAS C. AND ANGELA D.  
OR.0137-757 2/5/2003  
1.209 ac p.16-171
- 27 ANDERSON DENNIS R. AND KIMBERLY S.  
OR.0047-743 2/24/2000  
0.055 ac p.17-399
- 28 ANDERSON JERRY R. AND JERRI L.  
272-944 4/9/1996  
1.2316 ac p.16-70
- 29 SOMMERS MICHAEL D. AND KARLENE R.  
OR.0066-788 1/31/2001  
0.277 ac p.17-43
- 30 MILLER DAN A. AND BETTY E.  
OR.0057-373 8/22/2000  
0.265 ac p.17-609
- 31 KANDEL FORREST AND MARY ANN  
OR.0066-788 1/31/2001  
1.126 ac p.17-774
- 32 MARTIN JAMES L. AND JANE D.  
OR.0086-688 9/4/2001  
0.493 ac p.17-774
- 33 Jacob J. and Erma E. Beachy, co-trustees  
OR.185-2927 12/29/2005  
1.38 ac p.19-590

T-9, R-6, 1st. Qtr.  
Lots 13, 14, 18, 19  
BERLIN TWP.

SCALE: 1" = 200'  
Last Revision: 12/29/2005



LET IT BE KNOWN, THIS MAP HAS BEEN PREPARED AS A REFERENCE GUIDE TO PROPERTY OWNERSHIP. WE BELIEVE THIS INFORMATION TO BE CORRECT FOR ANY LEGAL USE, WHETHER IT BE IN SALES, TRANSFERS, TRADES, LEASES OF ANY TYPE, ETC., AND DO NOT ACCEPT RESPONSIBILITY FOR ERRORS OF ANY NATURE OR OMISSIONS CONTAINED HEREIN.