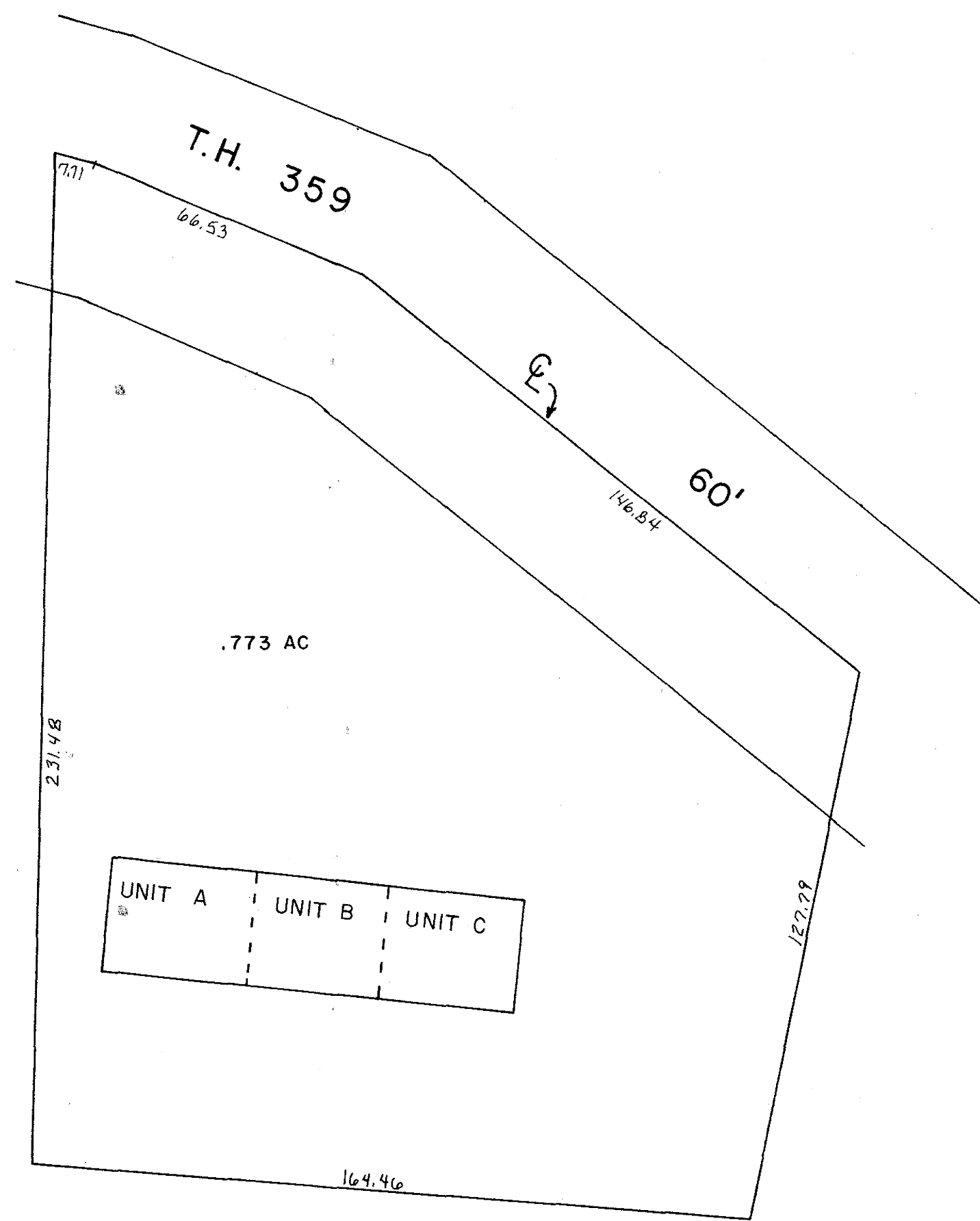


BERLIN HILLS CONDOMINIUM			
UNIT	OWNER	DEED	DATE
A			
B			
C			
COMMON AREA	EACH UNIT OWNS UNDIVIDED ONE-THIRD	242-615	3/20/89



**BERLIN HILLS CONDOMINIUM**

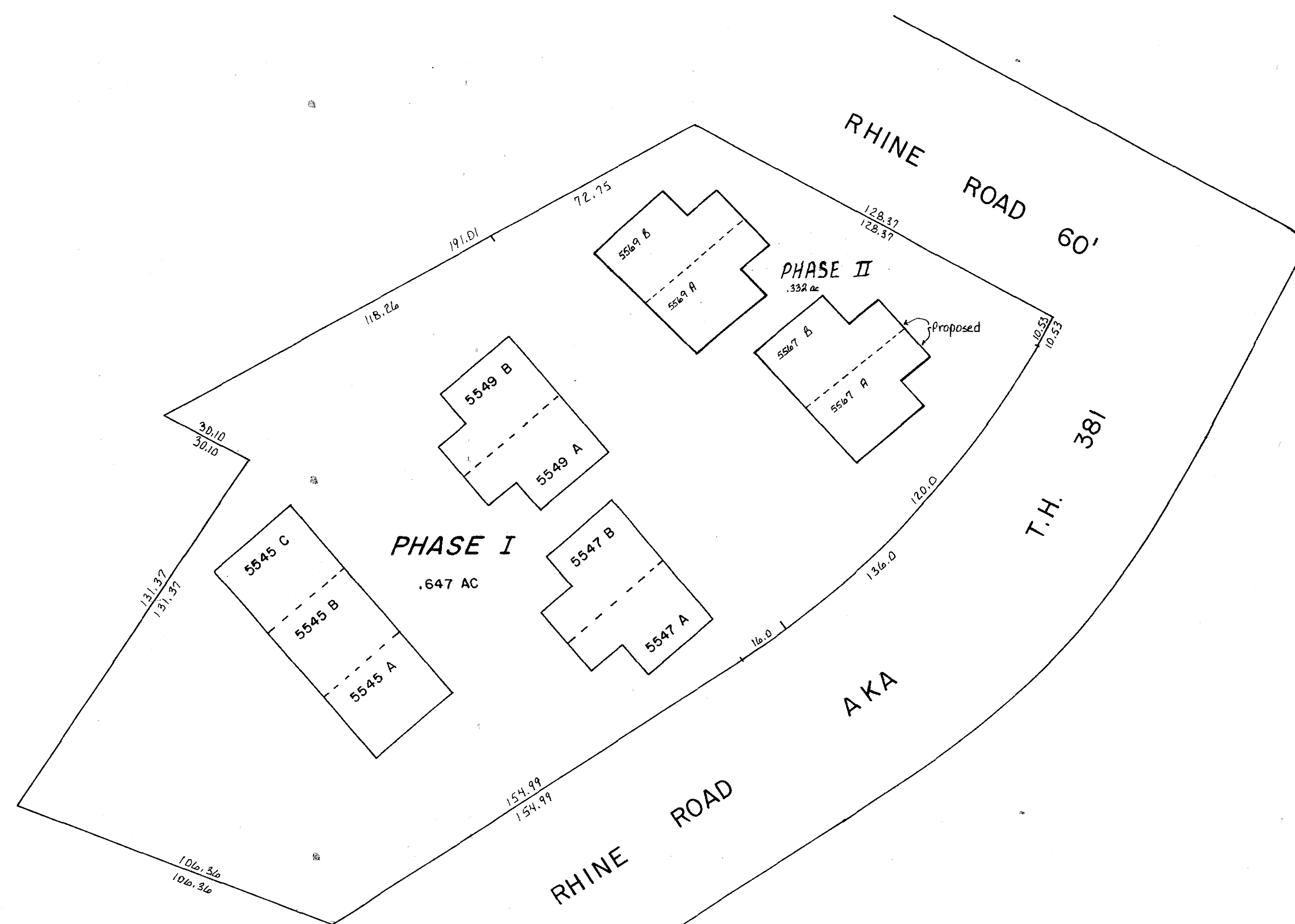
Lot 21, 1st Qtr., T-9, R-6 (See Map B-13B)

Scale 1" = 30'

Declaration: Vol. 242, Pg. 615 3-20-1989

Plat Vol. 13, Pg. 59-60

LAUREL RUN CONDOMINIUM PHASE I			
UNIT	OWNER	DEED	DATE
5545 A			
5545 B			
5545 C			
5547 A			
5547 B			
5549 A			
5549 B			
COMMON AREA	EACH UNIT OWNS UNDIVIDED ONE-ELEVENTH	248-645 248-778	9/13/89 6/19/89
5567 A			
5567 B			
5569 A			
5569 B			



**LAUREL RUN CONDOMINIUM**

Lot 11B, Second Stutzman S.D. located in  
Lot 21, 1st Qtr., T-9, R-6 (See Map B-13B)

Scale 1" = 30'

Declaration: Vol. 243, Pg. 778 6-14-1989

Plat Vol. 2, Pg. 211-215

LET IT BE KNOWN THIS MAP HAS BEEN PREPARED AS A REFERENCE GUIDE TO PROPERTY OWNERSHIP. WE BELIEVE THIS INFORMATION TO BE CORRECT AND CURRENT; HOWEVER, IT IS NOT INTENDED FOR ANY LEGAL USE, WHETHER IT BE IN SALES, TRANSFERS, TRADES, LEASES OF ANY TYPE, ETC., AND DO NOT ACCEPT RESPONSIBILITY FOR ERRORS OF ANY NATURE OR OMISSIONS CONTAINED HEREIN.

**CONDOMINIUMS**

Updated: 9/1/2004

**B-13C**