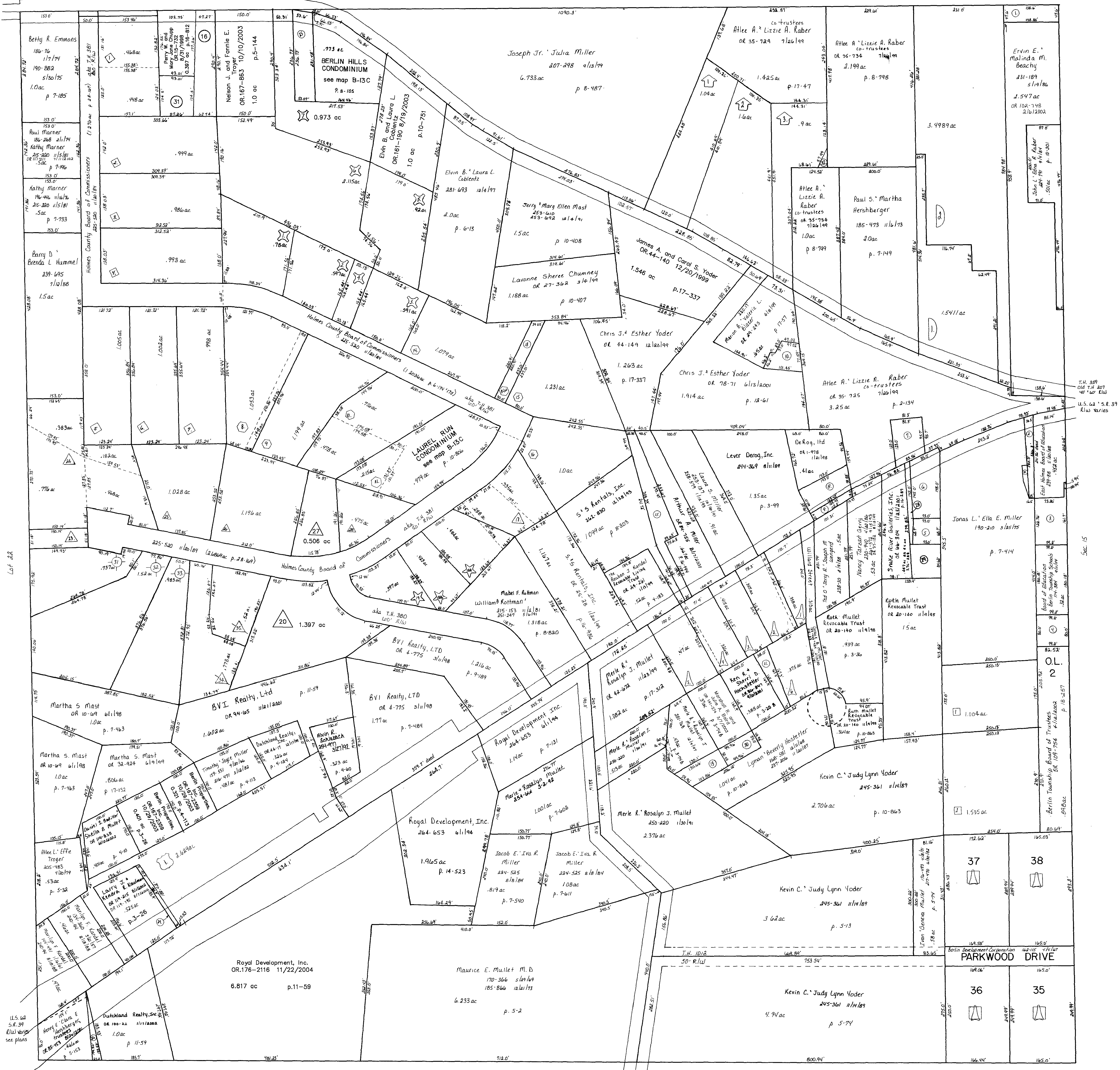


T.N. 359  
Old T.N. 207  
40' x 100' R/W

Lot 16



- Coblenitz Drive Allotment plat 15-103  
platted 8/20/04 B-13E
- Somerset Allotment No. 1 plat 17-56  
platted 4/18/99 B-13E
- Berlin West Subdivision plat 11-194  
platted 7/20/99 B-13E
- Walnut Grove Allotment No. 1 plat 17-59  
platted 6/21/00 B-13E
- Parkview Subdivision B-13E  
Plat R-129
- △ Willard Miller Allotment Number One plat 2-63  
Platted 4/21/87 B-13E
- ◇ First Stutzman Subdivision plat 28-147  
Platted 4/16/99 B-13E
- Second Stutzman Subdivision plat 19-175  
Platted 7/1/98 B-13E
- △ Third Stutzman Subdivision plat 28-169  
Platted 5/22/98 B-13E
- ☆ Replat of Lots 18 and 19 3rd Stutzman S.D. plat 20-208  
Platted 5/10/88 B-13E
- △ Third Stutzman Subdivision Replat of Lots 29-30, plat 16-988  
Platted 12/21/99 B-13E
- Replat of Lot 22 199, Lot 23, 3rd Stutzman Sub. plat 18-166  
Platted 5/25/92 B-13E
- ☆ Richard Weaver Allotment No. 1 B-13 E  
Plat 2-250 Platted 7/26/1995

**T-9, R-6**  
**1st. Qtr. Lot 21**  
**BERLIN TWP.**  
**SCALE: 1" = 100'**  
Last Revision: 12/2/2004

LET IT BE KNOWN, THIS MAP HAS BEEN PREPARED AS A REFERENCE GUIDE TO PROPERTY OWNERSHIP AND CURRENT, HOWEVER, IT IS NOT INTENDED FOR ANY LEGAL USE, WHETHER IT BE IN SALES, TRANSFERS, TRADES, LEASES OF ANY TYPE, ETC., AND DO NOT ACCEPT RESPONSIBILITY FOR ERRORS OF ANY NATURE OR OMISSIONS CONTAINED HEREIN.

**B-13E**