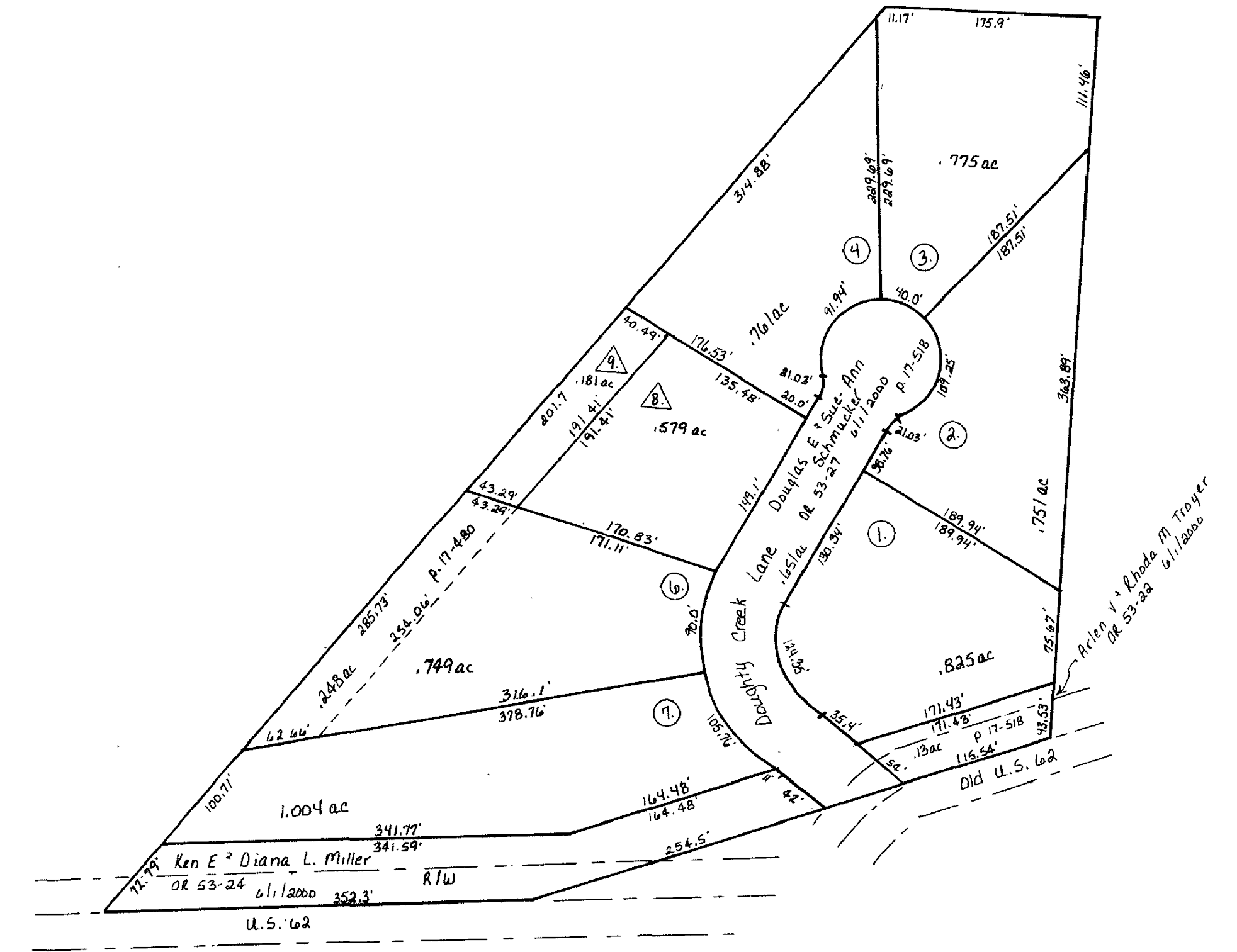


T-9, R-6, 1st Qtr, Lot 22

- Nelson Miller Allot. #1 plat 2A-162
platted 7/28/76 B-13A
- ◇ Nelson Miller Allot. #2 plat 2A-170
platted 8/13/76 B-13A
- ⬆ Nelson Miller Allot. #3 plat 9-170
platted 8/13/76 B-13A
- ☆ Nelson Miller Allot. #4 plat 9-184* 10-154
platted 7/15/76 B-13A
- ▲ Marion Stuteman Sub plat 2-203
lot 2 replatted p. 2-122 platted 6/22/78 B-13A
- △ John E. Schrock Allotment No. 1 plat 15-109
platted 11/10/76 replat of lot 4 of Marion Stuteman Subdivision B-13A
- ⬢ Raymond M. Edna Hershberger Allotment No. 1
plat 15-124 platted 4/11/77 B-13A
- ☆ Nelson Miller Allotment No. 5
plat 10-716 platted 5/16/76 B-13A

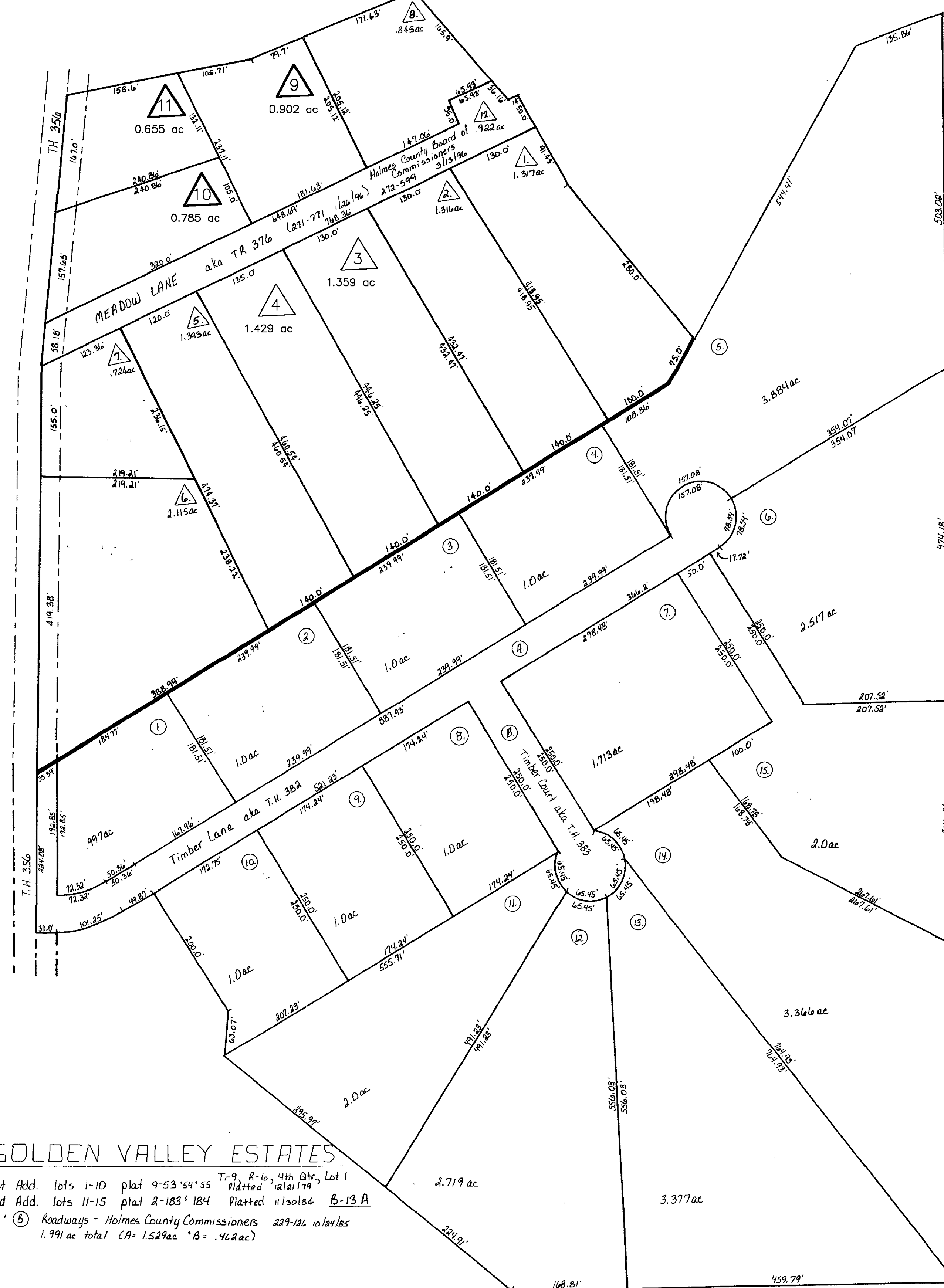
Updated: 10/26/2004



DUTCHLAND ACRES No. 1

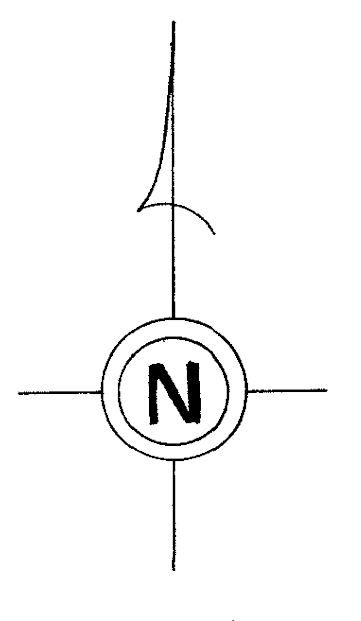
- T-9, R-6, 4th Qtr, Lot 2
Plat 2A-161 Platted 7/8/76 B-13A
- △ Dutchland Acres Allotment No. 1 Replat of Lots
Plat 17-800 Platted 4/6/2000 B-13A

THE MEADOWS ALLOTMENT No. 1
T-9 R-6 4th Qtr. Lot 1
PLAT 2-251 Platted 6/24/95 B-13A



GOLDEN VALLEY ESTATES

- 1st Add. lots 1-10 plat 9-53-54-55 Platted 11/17/76 B-13A
- 2nd Add. lots 11-15 plat 2-183* 184 Platted 11/10/76 B-13A
- ⬢ ⬢ Roadways - Holmes County Commissioners 227-26 2/16/76
1.991 ac total (P. 1.529 ac * B. .462 ac)



SCALE: 1" = 100'

13
13A