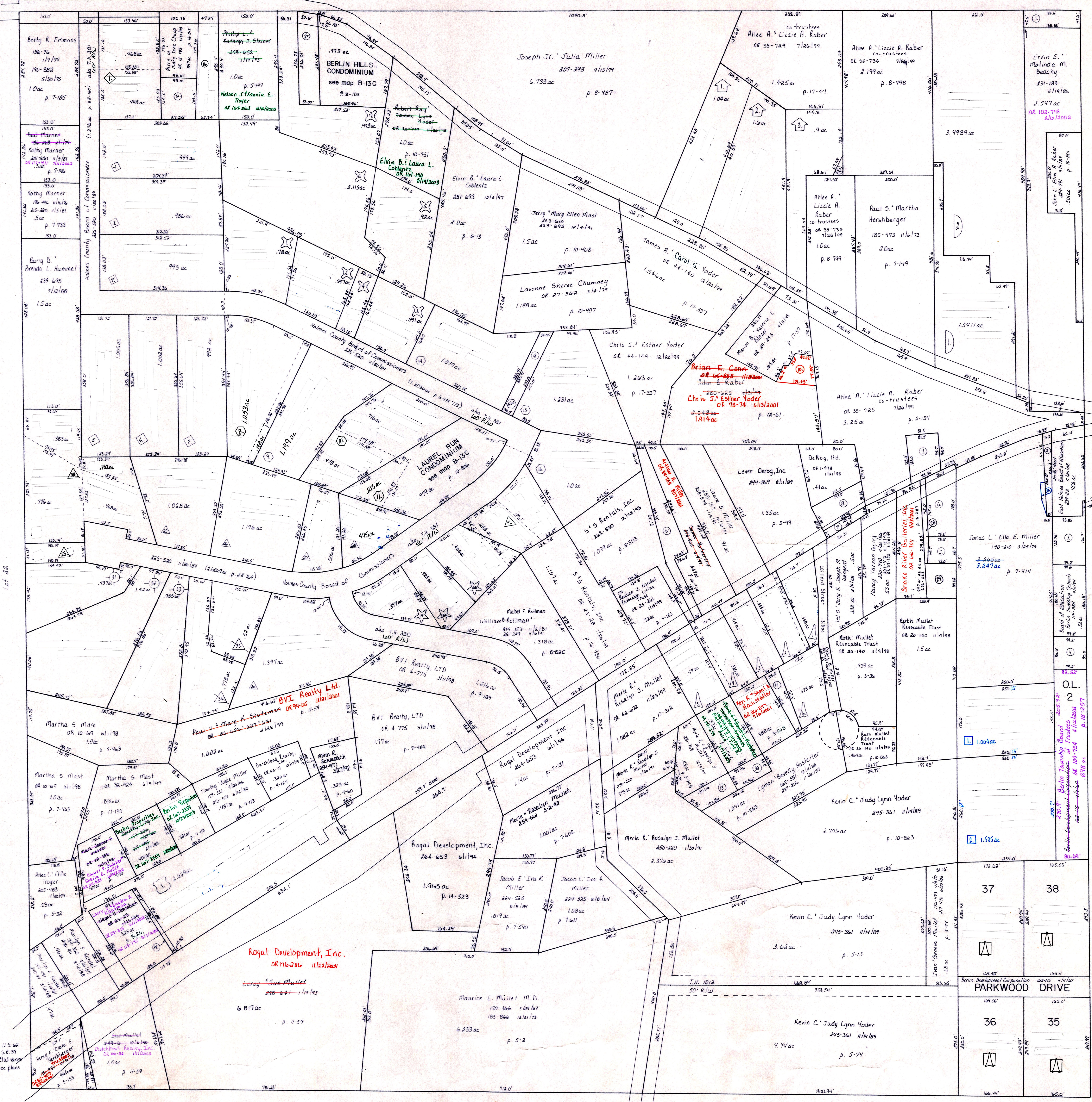


T.H. 359  
Old T.H. 207  
1/2" = 100'

Lot 10



- Coblenz Drive Allotment plat 15-103  
platted 6/24/04 B-13E
- Somerset Allotment No. 1 plat 7-56  
platted 4/18/99 B-13E
- Berlin West Subdivision plat 17-196  
platted 7/28/99 B-13E
- Walnut Grove Allotment No. 1 plat 17-534  
platted 6/21/00 B-13E
- Parkview Subdivision B-13E  
plat 2-129

- △ Willard Miller Allotment Number One plat 2-63  
platted 5/21/27 B-13E
- ◇ First Stuteman Subdivision plat 28-167  
platted 9/16/1977 B-13E
- Second Stuteman Subdivision plat 16-173  
platted 7/6/78 B-13E
- △ Third Stuteman Subdivision plat 28-169  
platted 6/22/79 B-13E
- ☆ Replat of Lots 18 and 19 3rd Stuteman S.D. 12-208  
platted 5/18/00 B-13E
- △ Third Stuteman Subdivision Replat of Lots 29 & 30 plat 16-988  
platted 1/29/99 B-13E
- Replat of Lot 22 1st, 2nd, 3rd Stuteman Sub. plat 13-160  
platted 5/20/92 B-13E
- ☆ Richard Weaver Allotment No. 1 plat 2-250  
platted 7/26/95 B-13E

T-9, R-6  
1st. Qtr. Lot 21  
BERLIN TWP.  
SCALE: 1" = 100'

13-1313

LET IT BE KNOWN, THIS MAP HAS BEEN PREPARED AS A REFERENCE GUIDE TO PROPERTY OWNERSHIP AND CURRENT, HOWEVER, IT IS NOT INTENDED FOR ANY LEGAL USE, WHETHER IT BE IN SALES, TRANSFERS, TRADES, LEASES OF ANY TYPE, ETC., AND DO NOT ACCEPT RESPONSIBILITY FOR ERRORS OF ANY NATURE OR OMISSIONS CONTAINED HEREIN.