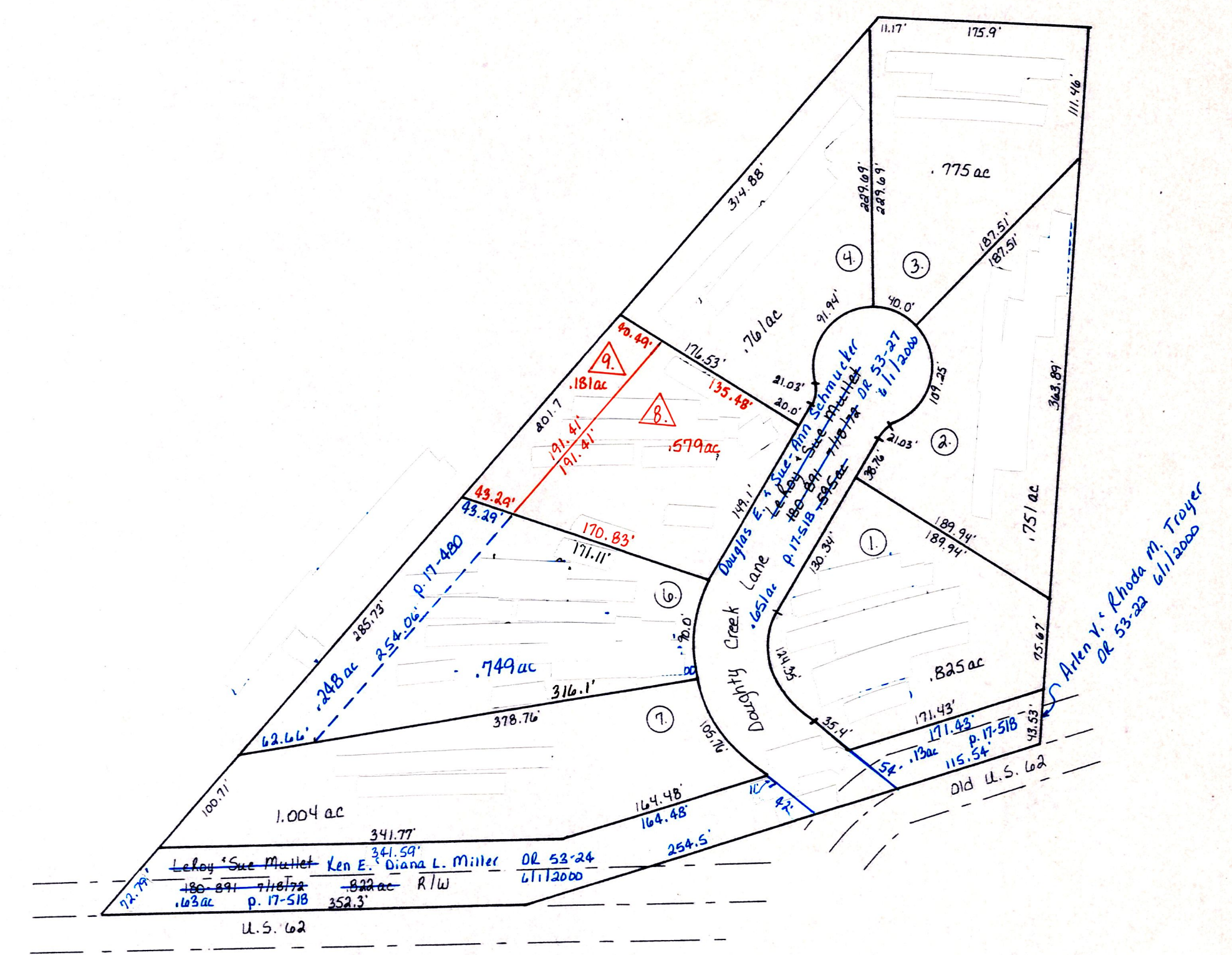


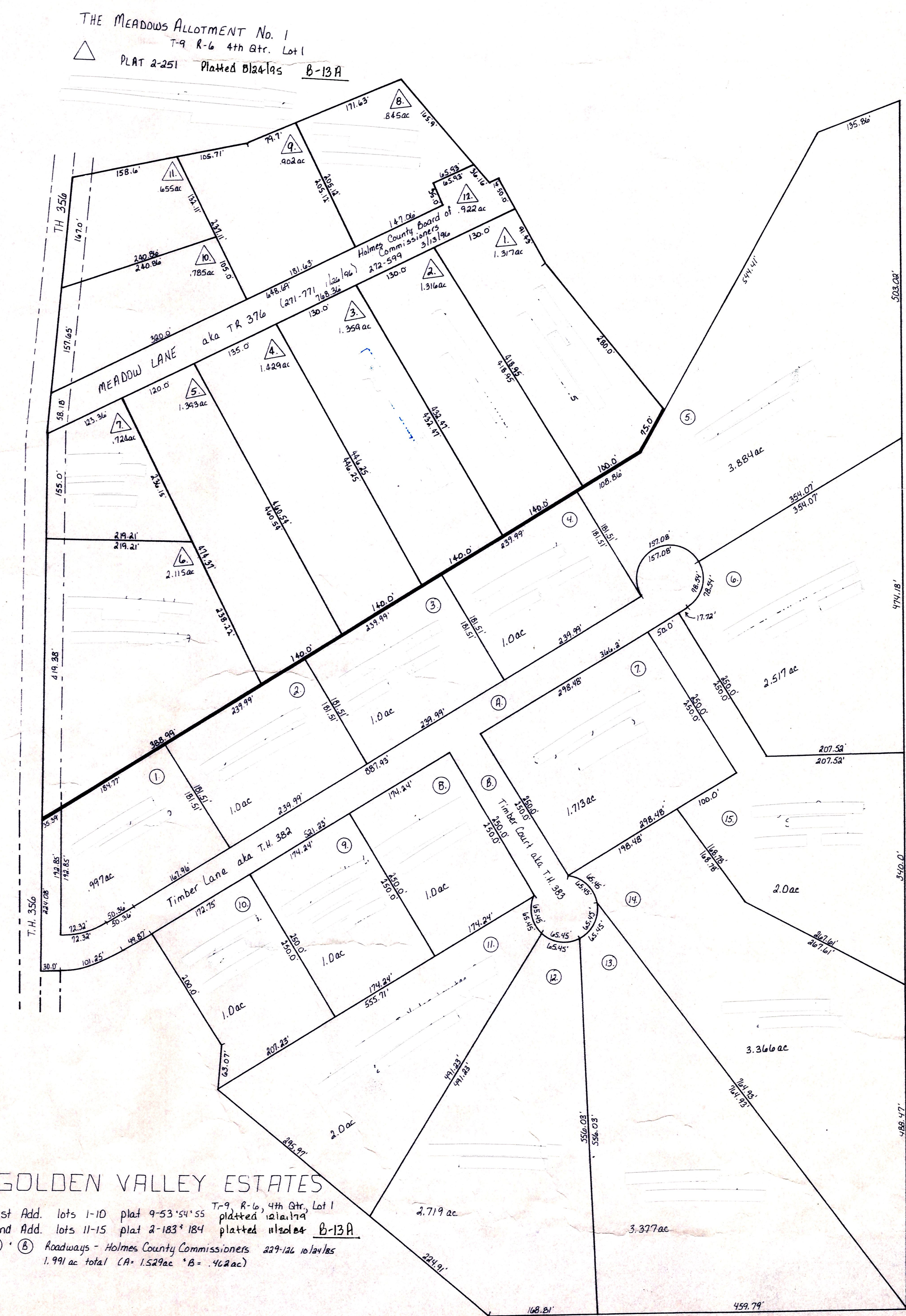
T-9, R-6, 4th Qtr, Lot 22

- Nelson Miller Allot #1 plat 28-162  
platted 7/26/72 B-13A
- ◇ Nelson Miller Allot #2 plat 28-170  
platted 8/1/74 B-13A
- ⬆ Nelson Miller Allot #3 plat 28-172  
platted 8/1/74 B-13A
- ☆ Nelson Miller Allot #4 plat 4-184 10-154  
platted 7/15/83 B-13A
- ▲ Marion Stuteman Sub plat 2-203  
lot 2 replatted 2-2-122 platted 1/22/78 B-13A
- △ John F. Schrock Allotment No. 1 plat 15-109  
replat of lot 4 of Marion Stuteman Subdivision  
platted 1/21/76 B-13A
- Raymond M. Edna Hershberger Allotment No. 1  
plat 15-124 platted 4/11/77 B-13A
- ⬆ Nelson Miller Allotment No. 5  
plat 16-718 platted 5/18/78 B-13A



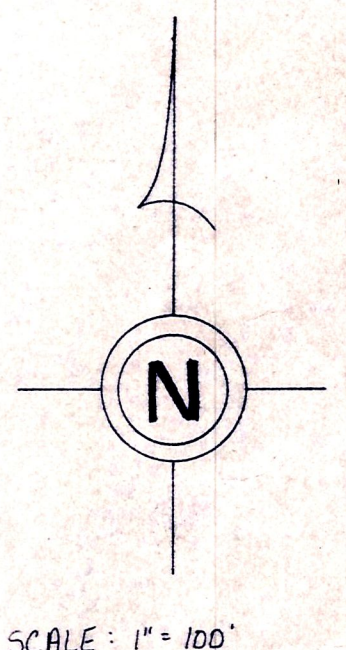
DUTCHLAND ACRES No. 1

- T-9, R-6, 4th Qtr, Lot 22  
Plat 28-162 Platted 7/26/72 B-13A
- △ Dutchland Acres Allotment No. 1 replat of Lot 5  
Plat 17-840 Platted 4/16/80 B-13A



○ GOLDEN VALLEY ESTATES

- 1st Add. lots 1-10 plat 9-53 54 55 T-9, R-6, 4th Qtr, Lot 1  
platted 1/21/74
- 2nd Add. lots 11-15 plat 2-183 184 platted 1/21/74 B-13A
- ① ② Roadways - Holmes County Commissioners 227-126 relatives  
1.991 ac total CA-1529ac \*B\*-922ac



SCALE: 1" = 100'

13  
13A