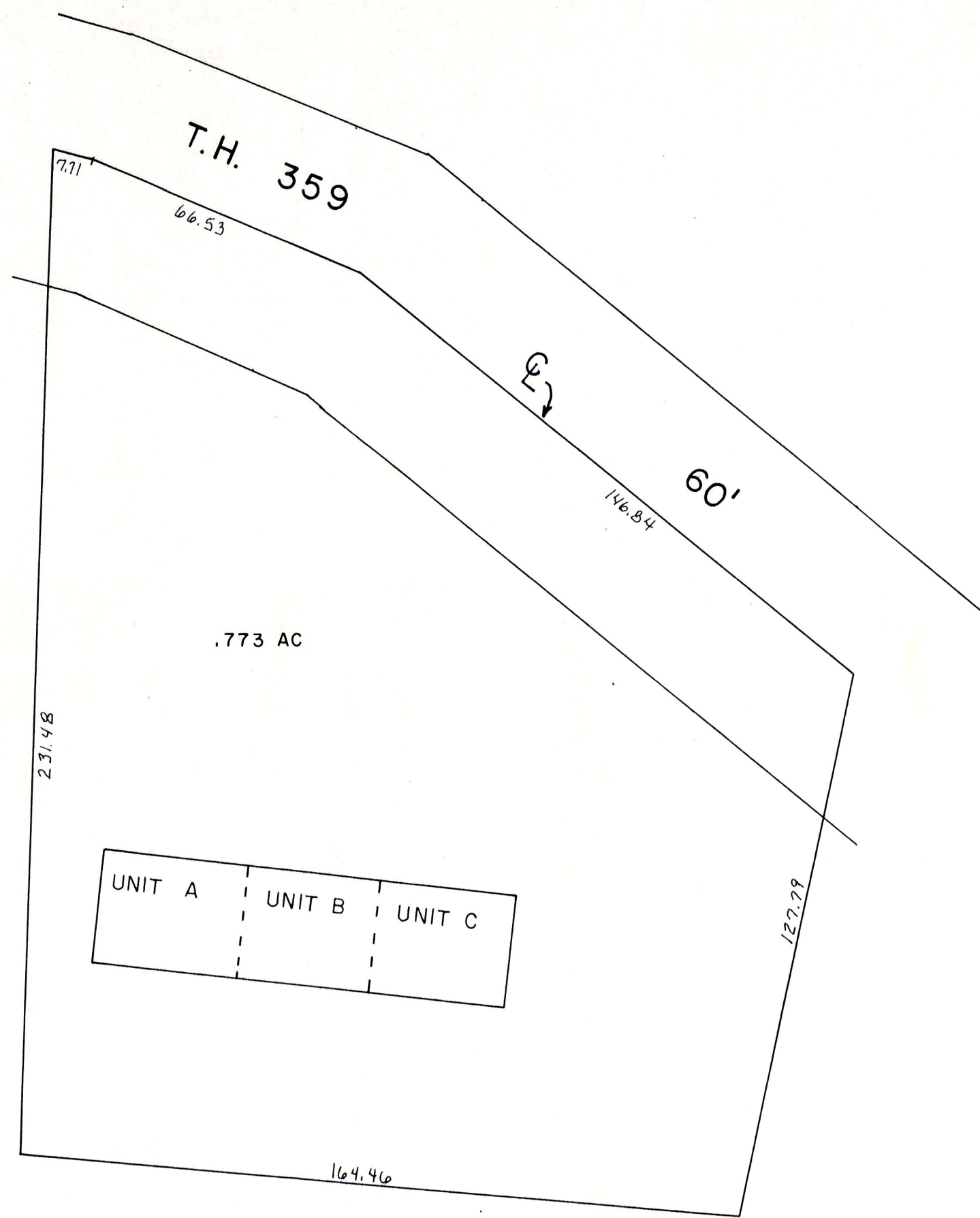


BERLIN HILLS CONDOMINIUM				
UNIT	OWNER	DEED	DATE	
A	Mullet Associates, LTD. <i>Kenny Mullet</i>	246-650 241-295	08-3-127	12/16/89
B	Mullet Associates, LTD. <i>Kenny Mullet</i>	246-650 241-295	08-3-127	12/16/89
C	Mullet Associates, LTD. <i>Kenny Mullet</i>	246-650 241-295	08-3-127	12/16/89
COMMON AREA	EACH UNIT OWNS UNDIVIDED ONE-THIRD	242-615	3/26/89	



**BERLIN HILLS CONDOMINIUM**

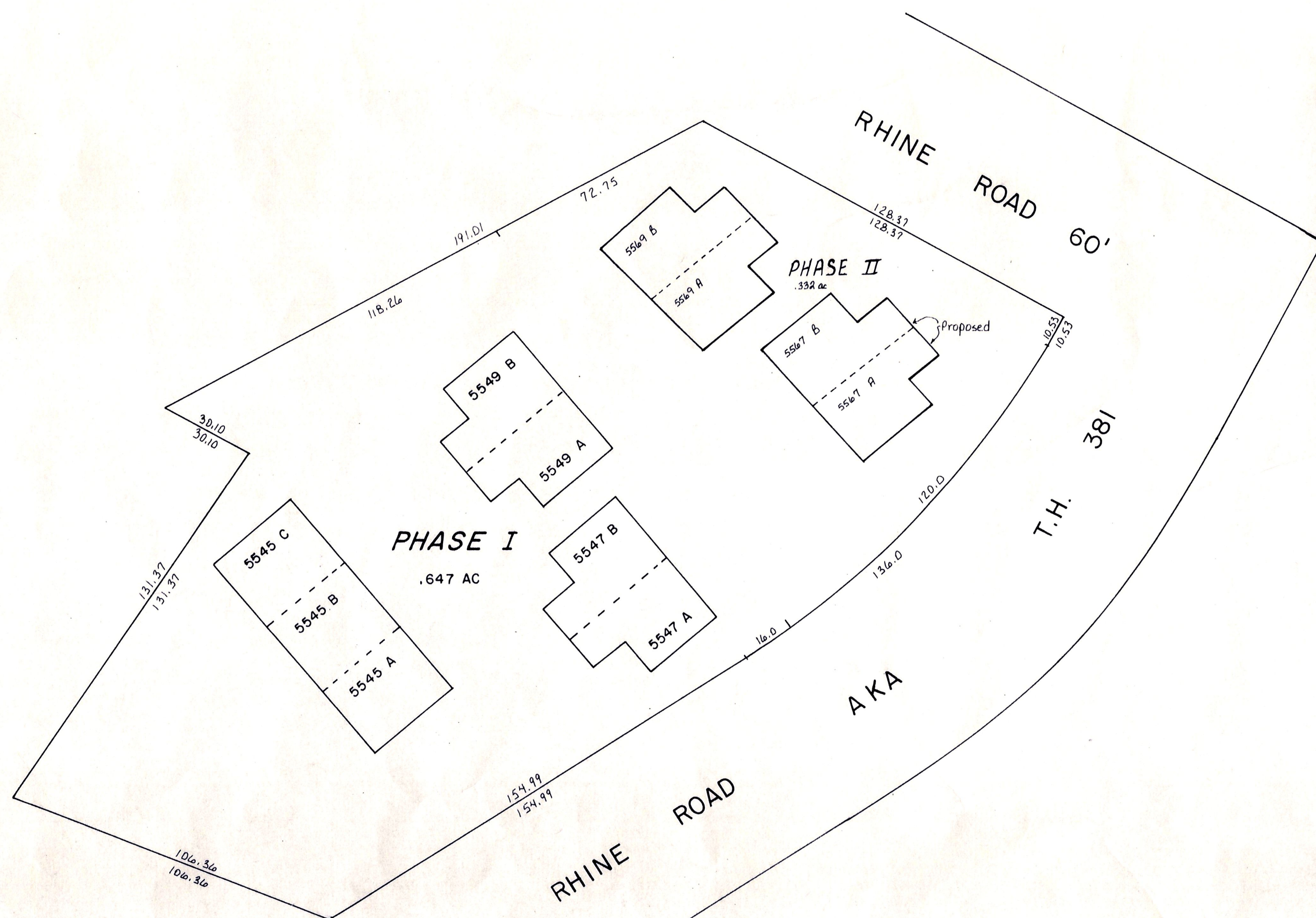
Lot 21, 1st Qtr., T-9, R-6 (See Map B-13B)

Scale 1" = 30'

Declaration: Vol. 242, Pg. 615 3-20-1989

Plat Vol. 13, Pg. 59-60

LAUREL RUN CONDOMINIUM PHASE I				
UNIT	OWNER	DEED	DATE	
5545 A	Roman L. Jr., Naomi J., Mark A. Kandel <i>William J. Janet - Mast</i>	275-222 240-103	6/11/90	6/12/89
5545 B	Rachel Kaufmann	245-147	10/18/89	
5545 C	Henry A. Yoder <i>Jane Sundheimer</i>	276-199 259-827	11/14/90	
5547 A	Kevin Mast <i>Kay Reservoirs</i>	275-183 245-981	11/10/89	
5547 B	James O. Yoder <i>Douglas A. Christine R. Cox</i>	245-182	10/20/89	
5549 A	Richard E. Doris M. Pith <i>Ken A. Kristin L. Wheeler</i>	245-248 243-265	11/10/89	
5549 B	Bonnie Miller	245-350	11/12/89	
COMMON AREA	EACH UNIT OWNS UNDIVIDED ONE-ELEVENTH	248-645 243-278	7/17/90	
5567 A	Roman L. Jr., Naomi J. Kandel <i>Eugene &amp; Kay A. Hill</i>	275-694 266-478	11/17/90	
5567 B	Brian Lee Yoder & Melissa Sue Schrock <i>Damon B. Joleanne Hitti</i>	276-780 266-606	11/10/89	
5569 A	Josiah D. Mullet & Sherri L. Mast	277-284	12/15/97	
5569 B	Yvonne J. Miller	249-22	10/20/89	
5569 C	Enes Schrock, Jr.	249-742	11/18/90	



**LAUREL RUN CONDOMINIUM**

Lot 11B, Second Stutzman S.D. located in  
Lot 21, 1st Qtr., T-9, R-6 (See Map B-13B)

Scale 1" = 30'

Declaration: Vol. 243, Pg. 778 6-14-1989

Plat Vol. 2, Pg. 211-215

LET IT BE KNOWN, THIS MAP HAS BEEN PREPARED AS A REFERENCE GUIDE TO PROPERTY OWNERSHIP. WE BELIEVE THIS INFORMATION TO BE CORRECT AND CURRENT. HOWEVER, IT IS NOT INTENDED FOR ANY LEGAL USE, WHETHER IT BE IN SALES, TRANSFERS, TRADES, LEASES OF ANY TYPE, ETC., AND DO NOT ACCEPT RESPONSIBILITY FOR ERRORS OF ANY NATURE OR OMISSIONS CONTAINED HEREIN.

CONDOMINIUMS

B-13B