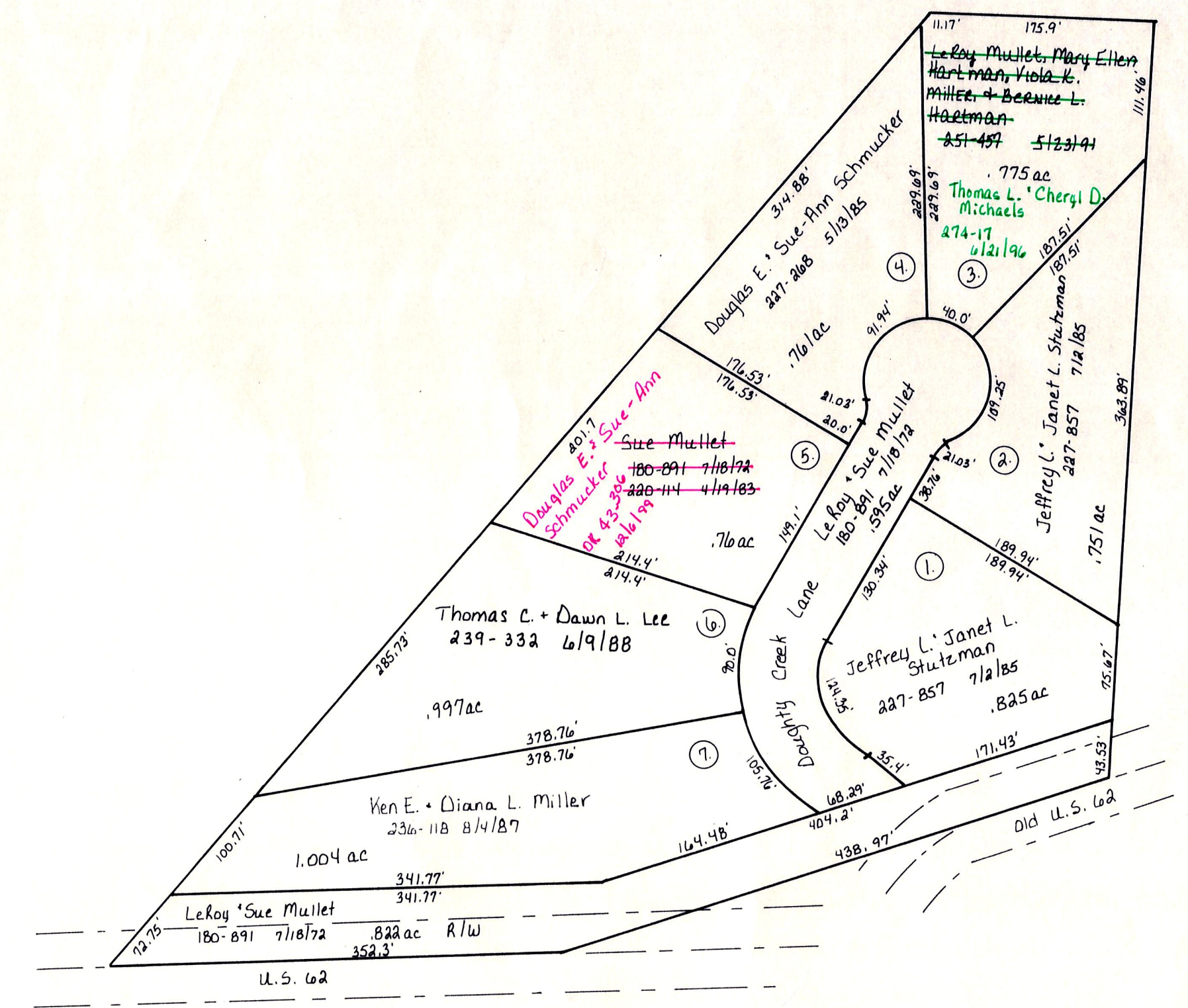


T-9, R-6, 4th Qtr, Lot 22

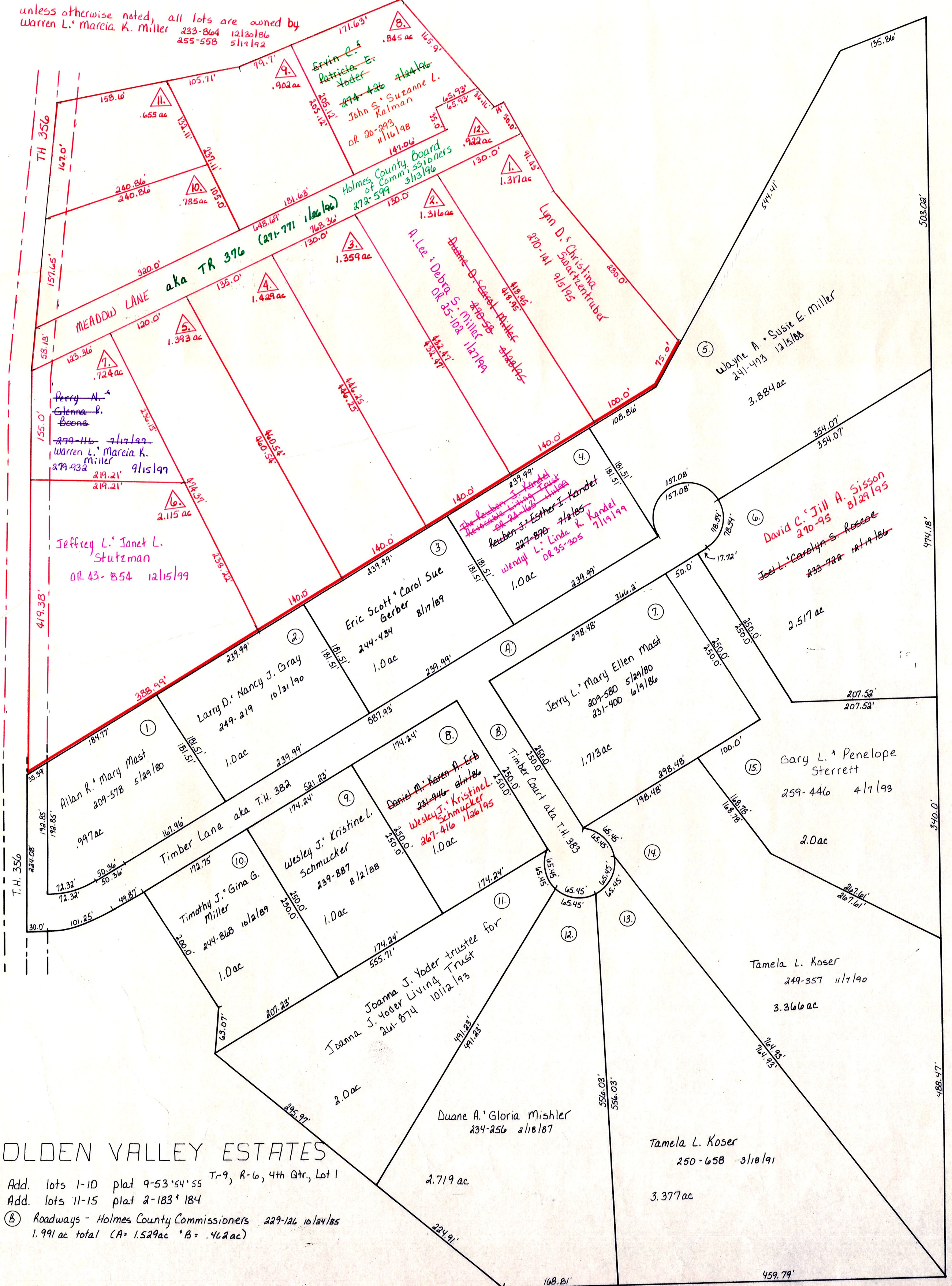
- Nelson Miller Allot. #1 plat 2A-162
- ◇ Nelson Miller Allot. #2 plat 2A-170
- ☆ Nelson Miller Allot. #3 plat 9-170
- ★ Nelson Miller Allot. #4 plat 9-184 10-154
- ▲ Marion Stutzman Sub. plat 2-203 lot 2 replatted p. 2-122
- ▲ John E. Schrock Allotment No. 1 plat 15-109 replat of lot 4 of Marion Stutzman Sub.
- ▲ Raymond M. Edna Hershberger Allotment No. 1 plat 15-124 platted 4/1/97
- ★ Nelson Miller Allotment No. 5 plat 16-718 platted 5/16/98



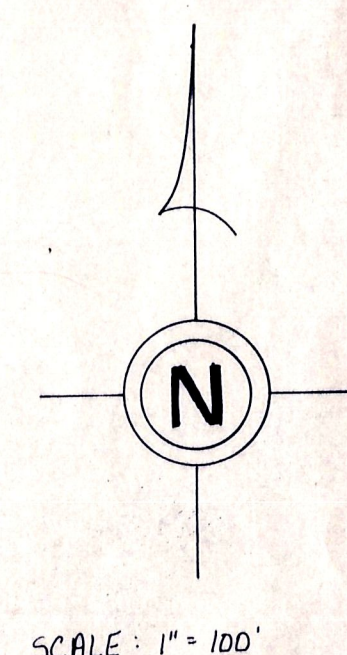
DUTCHLAND ACRES No. 1  
T-9, R-6, 4th Qtr, Lot 2  
Plat 2A-161

THE MEADOWS ALLOTMENT No. 1  
T-9, R-6, 4th Qtr, Lot 1  
PLAT 2-251

unless otherwise noted, all lots are owned by  
Warren L. Marcia K. Miller 233-864 1218186  
452-558 514182



GOLDEN VALLEY ESTATES  
1st Add. lots 1-10 plat 9-53 54 55 T-9, R-6, 4th Qtr, Lot 1  
2nd Add. lots 11-15 plat 2-183 184  
① ② Roadways - Holmes County Commissioners 229-126 10 1/2 miles  
1.991 ac total (A = 1.529 ac B = .462 ac)



SCALE: 1" = 100'

13  
13A