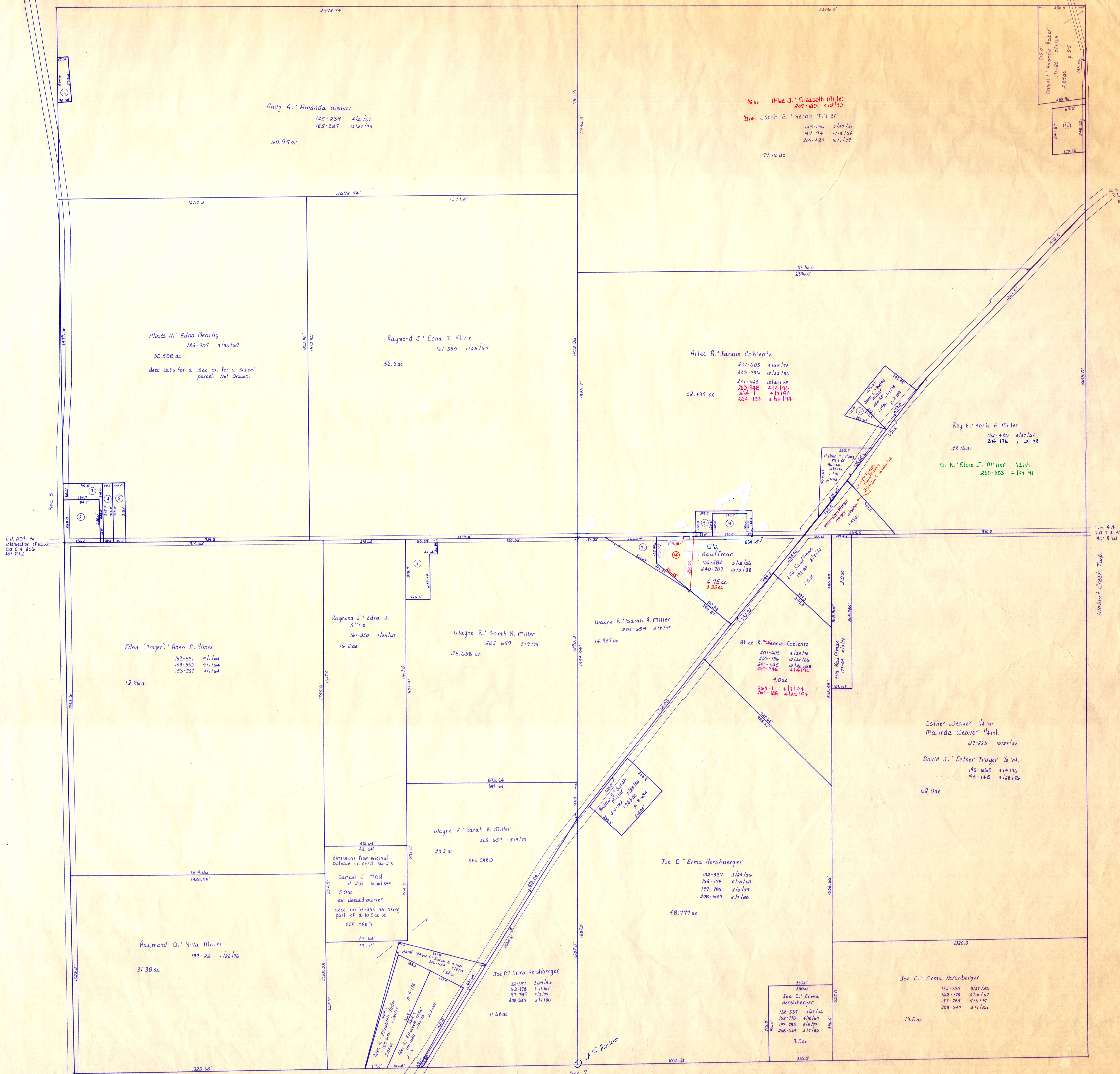


C.H. 17  
60' R/W

Salt Creek Twp.

T.H. 652  
Old T.H. 210  
30' R/W



C.H. 207 to  
intersection of us 62  
Old C.H. 206  
40' R/W

T.H. 414  
Old T.H. 159  
40' R/W

- ① Trustees of the North Bankerhill Private School 139-427 1/16/19-37 ac plat in file
- ② Eli A. Verna Skuteman 142-282 3/16/19 27 ac p. 3-27-B
- ③ Eli A. Verna Skuteman 158-222 3/16/19 149 ac see p. 4-21
- ④ Eli A. Verna Skuteman 168-89 3/16/19 320 ac p. 4-19
- ⑤ Eli A. Verna Skuteman 185-136 1/17/19 13 ac p. 7-77
- ⑥ Effie E. Rober 208-227 2/16/19 1000 ac p. 8-540
- ⑦ Edna (Troyer) Aden A. Voder 211-118 1/16/19 100 ac p. 10-220
- ⑧ Eli R. Mary Coblenz 180-811 1/16/19 30 ac p. 4-11
- ⑨ Eli R. Mary Coblenz 158-101 1/16/19 5 ac p. 1-65
- ⑩ John D. Betty Miller 204-58 1/16/19 2 ac p. 8-112
- ⑪ Andy J. Anna Miller 204-124 1/16/19 3 ac p. 8-112

for numbered parcels, see folder

T-9, R-5,  
Sec. 4  
BERLIN TWP.  
SCALE: 1" = 200'

LET IT BE KNOWN, THIS MAP HAS BEEN PREPARED AS A REFERENCE GUIDE TO PROPERTY OWNERSHIP. WE BELIEVE THIS INFORMATION TO BE CORRECT AND CURRENT, HOWEVER, IT IS NOT INTENDED FOR ANY LEGAL USE, WHETHER IT BE IN SALES, TRANSFERS, TRADES, LEASES OF ANY TYPE, ETC., AND DO NOT ACCEPT RESPONSIBILITY FOR ERRORS OF ANY NATURE OR OMISSIONS CONTAINED HEREIN.

PRINTED  
3-21-90

13-25