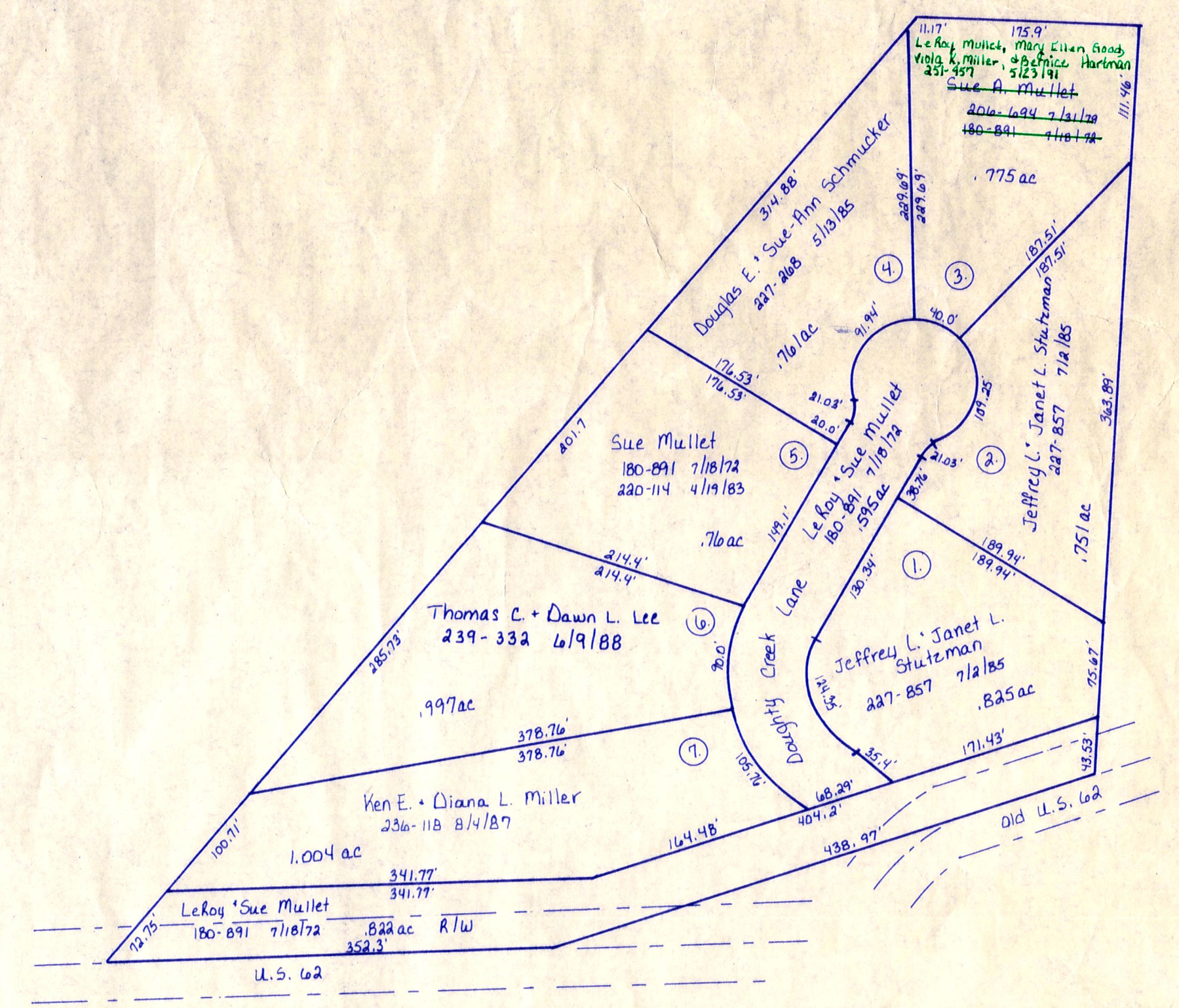


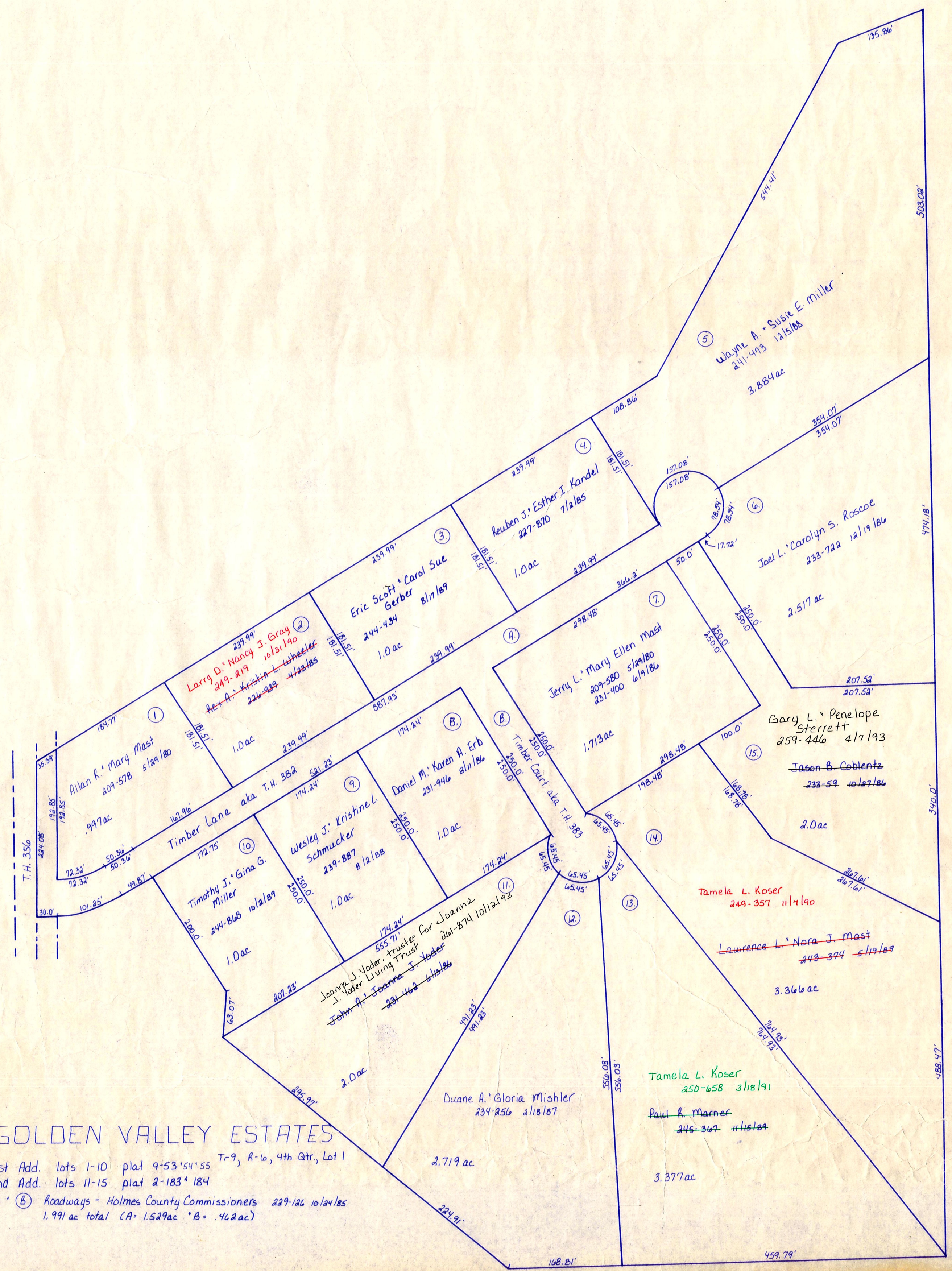
C.H. 201
Holmes County Commissioners
Holmes County Commissioners

- Nelson Miller Allot. #1 plat 2A-122
- ◇ Nelson Miller Allot. #2 plat 2A-170
- ⬆ Nelson Miller Allot. #3 plat 9-170
- ★ Nelson Miller Allot. #4 plat 9-184 10-154
- ▲ Marion Stutzman Sub. lot 2 replated, p. 2-221

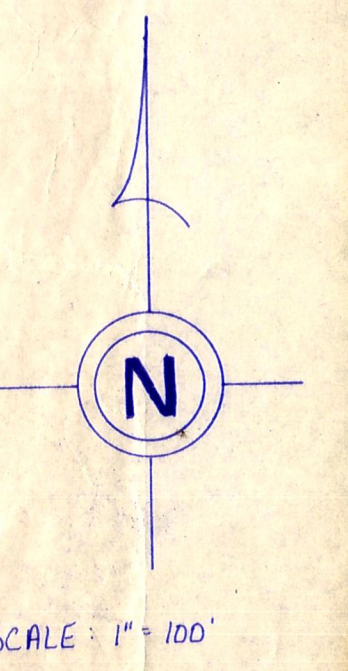
T-9, R-6, 4th Qtr, Lot 22



DUTCHLAND ACRES No. 1
T-9, R-6, 4th Qtr, Lot 2
Plat 2A-161



GOLDEN VALLEY ESTATES
1st Add. lots 1-10 plat 9-53 10-55 T-9, R-6, 4th Qtr, Lot 1
2nd Add. lots 11-15 plat 2-183 184
① ② Roadways - Holmes County Commissioners 229-126 10/16/85
1.991 ac total (A=1.529ac B= .462ac)



13
13A