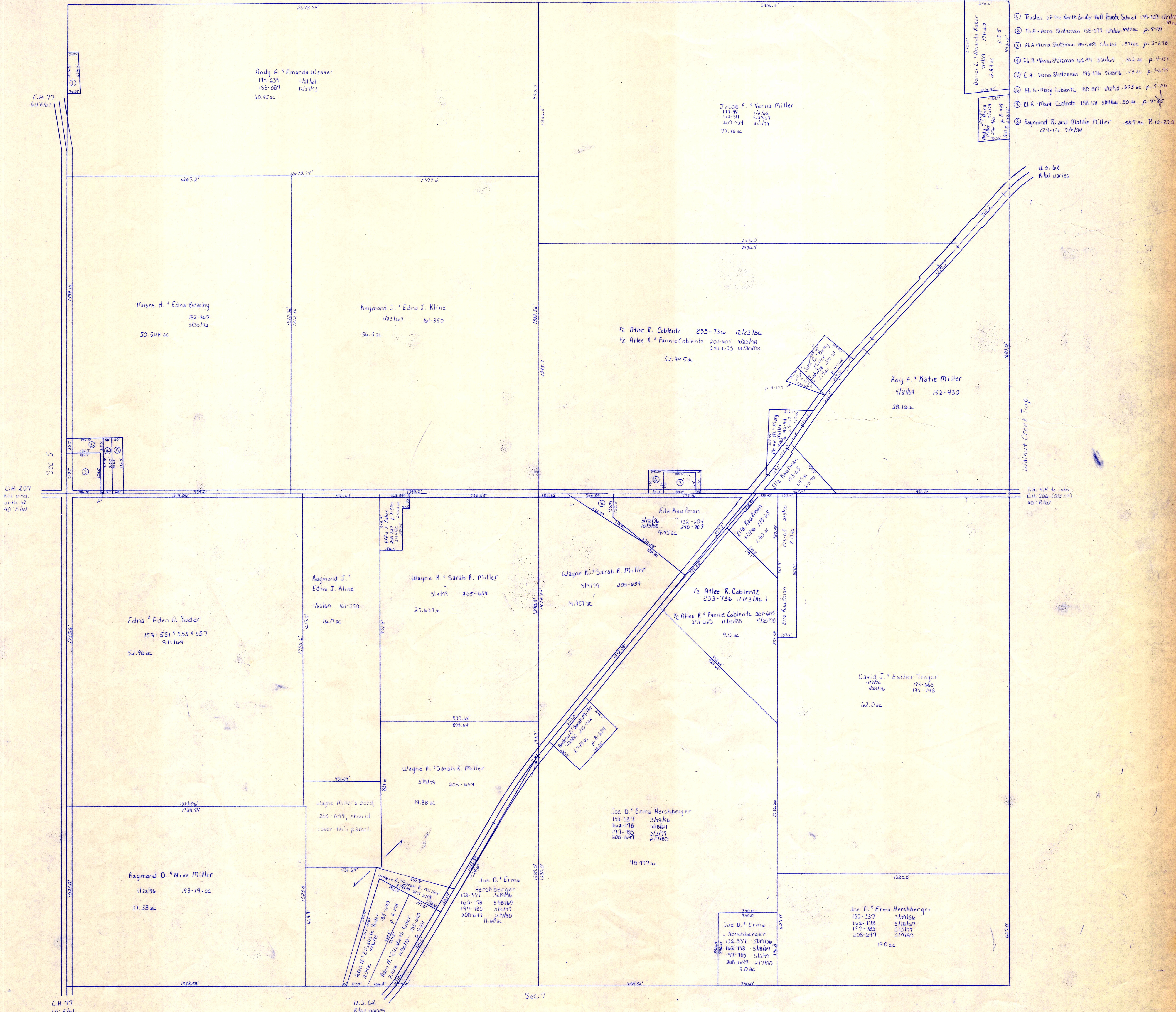


Salt Creek Twp.



- ① Trustees of the Northunker Hill Road School 139-141 1/2 ac
- ② Eli A. & Verna Stutzman 158-571 51/2 ac 49 ac p. 4-131
- ③ Eli A. & Verna Stutzman 195-389 51/2 ac .97 ac p. 3-298
- ④ Eli A. & Verna Stutzman 162-97 3/2 ac .22 ac p. 4-131
- ⑤ Eli A. & Verna Stutzman 195-136 7/2 ac .43 ac p. 7-677
- ⑥ Eli A. & Mary Coblenz 180-617 11/2 ac .375 ac p. 5-741
- ⑦ Eli A. & Mary Coblenz 138-161 51/2 ac .50 ac p. 4-131
- ⑧ Raymond R. and Mattie Miller .583 ac P. 10-270 224-131 7/2 1/4

LET IT BE KNOWN, THIS MAP HAS BEEN PREPARED AS A REFERENCE GUIDE TO PROPERTY OWNERSHIP. WE BELIEVE THIS INFORMATION TO BE CORRECT AND CURRENT, HOWEVER, IT IS NOT INTENDED FOR ANY LEGAL USE, WHETHER IT BE IN SALES, TRANSFERS, TRADES, LEASES OF ANY TYPE, ETC., AND DO NOT ACCEPT RESPONSIBILITY FOR ERRORS OF ANY NATURE OR OMISSIONS CONTAINED HEREIN.

T-9, R-5, Sec. 4  
 BERLIN TWP.  
 SCALE 1" = 200'