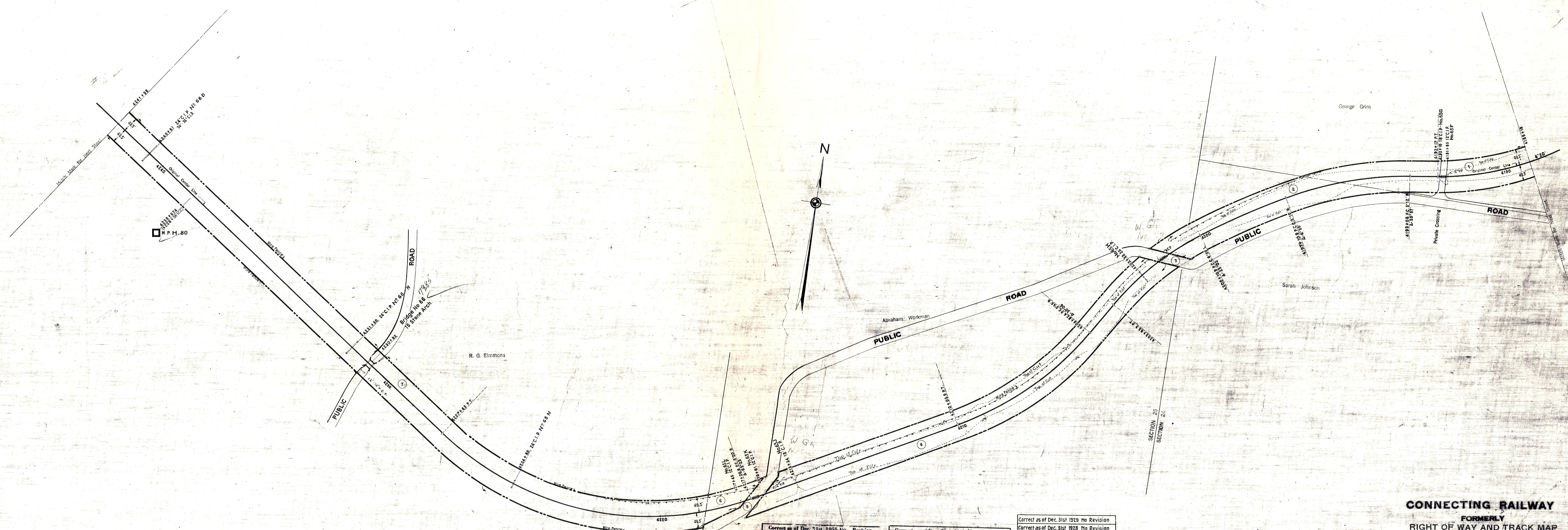


HOLMES COUNTY, OHIO
RICHLAND TOWNSHIP



AS OF DATE	CORRECT		REVISED	
	YES	NO	YES	NO
1927				
1928				
1929				
1930				
1931				
1932				
1933				
1934				
1935				
1936				
1937				
1938				
1939				
1940				
1941				
1942				
1943				
1944				
1945				
1946				
1947				
1948				
1949				
1950				
1951				
1952				
1953				
1954				
1955				

Correct as of Dec. 31st, 1955	No	Revision
Correct as of Dec. 31st, 1954	No	Revision
Correct as of Dec. 31st, 1953	No	Revision
Correct as of Dec. 31st, 1952	No	Revision
Correct as of Dec. 31st, 1951	No	Revision
Correct as of Dec. 31st, 1950	No	Revision
Correct as of Dec. 31st, 1949	No	Revision
Correct as of Dec. 31st, 1948	No	Revision
Correct as of Dec. 31st, 1947	No	Revision
Correct as of Dec. 31st, 1946	No	Revision
Correct as of Dec. 31st, 1945	No	Revision
Correct as of Dec. 31st, 1944	No	Revision
Correct as of Dec. 31st, 1943	No	Revision

Correct as of Dec. 31st, 1942	No	Revision
Correct as of Dec. 31st, 1941	No	Revision
Correct as of Dec. 31st, 1940	No	Revision
Correct as of Dec. 31st, 1939	No	Revision
Correct as of Dec. 31st, 1938	No	Revision
Correct as of Dec. 31st, 1937	No	Revision
Correct as of Dec. 31st, 1936	No	Revision
Correct as of Dec. 31st, 1935	No	Revision
Correct as of Dec. 31st, 1934	No	Revision
Correct as of Dec. 31st, 1933	No	Revision
Correct as of Dec. 31st, 1932	No	Revision
Correct as of Dec. 31st, 1931	No	Revision
Correct as of Dec. 31st, 1930	No	Revision

Correct as of Dec. 31st, 1929	No	Revision
Correct as of Dec. 31st, 1928	No	Revision
Correct as of Dec. 31st, 1927	No	Revision
Correct as of Dec. 31st, 1926	No	Revision
Correct as of Dec. 31st, 1925	No	Revision
Correct as of Dec. 31st, 1924	No	Revision
Correct as of Dec. 31st, 1923	No	Revision
Correct as of Dec. 31st, 1922	No	Revision
Correct as of Dec. 31st, 1921	No	Revision
Correct as of Dec. 31st, 1920	No	Revision
Correct as of Dec. 31st, 1919	No	Revision
Correct as of Dec. 31st, 1918	No	Revision
Correct as of Dec. 31st, 1917	No	Revision

Sheet No. 53 V. 21 Ohio of Cleveland, Akron and Cincinnati Railway
from Survey Station 4189+19 to Survey Station 4241+98

CONNECTING RAILWAY
FORMERLY
RIGHT OF WAY AND TRACK MAP
CLEVELAND, AKRON AND CINCINNATI RAILWAY
OPERATED BY THE
PENNSYLVANIA COMPANY
AKRON DIVISION
STATION 4189+18 TO STATION 4241+98
SCALE: 1 IN. = 100 FT. JUNE 30, 1918
OFFICE OF VALUATION ENGINEER
PITTSBURGH, PA.

V10
OHIO
53
FORMERLY
V.21
OHIO
53

V10
OHIO
53