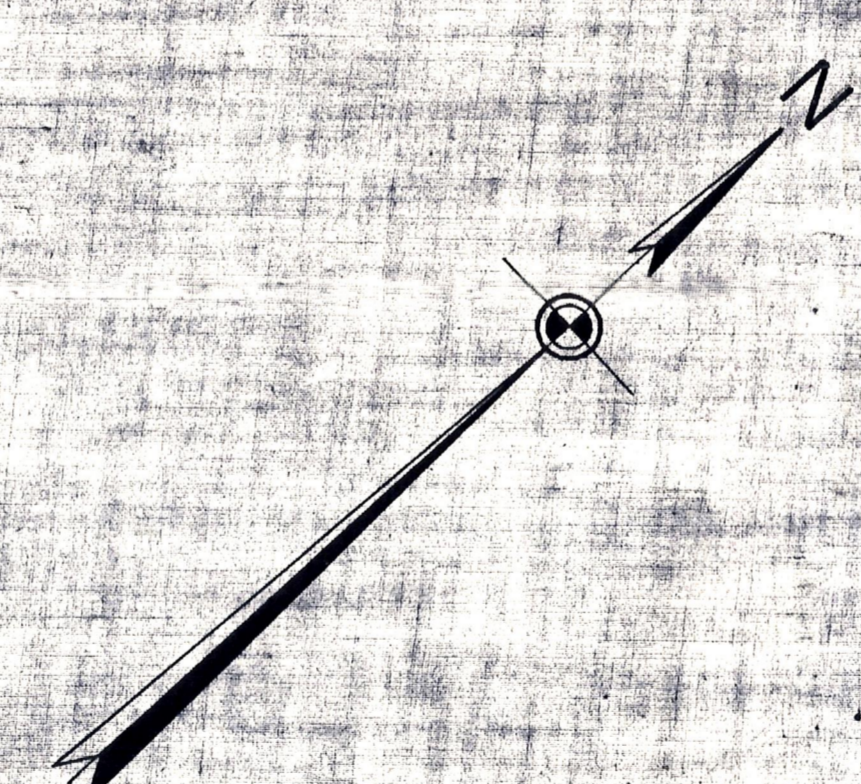
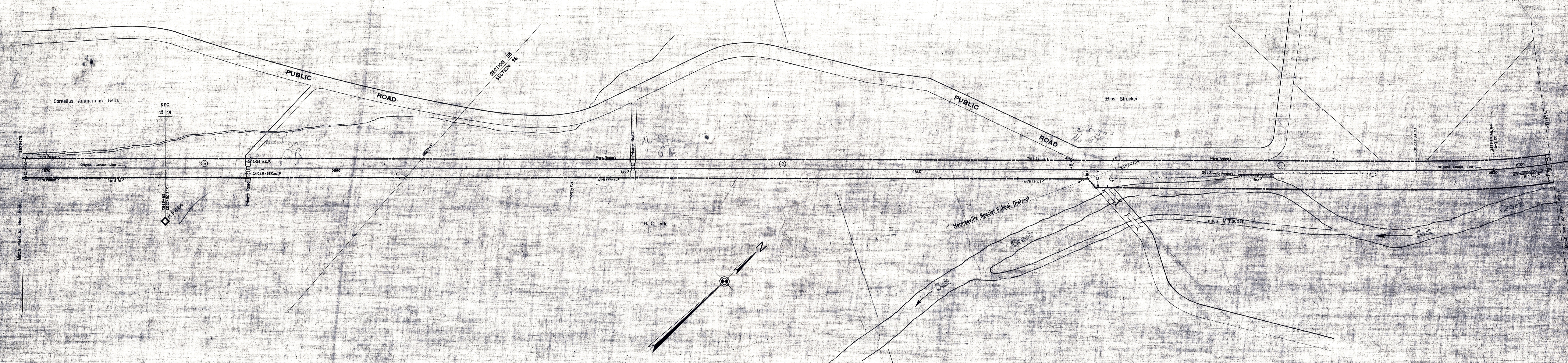


HOLMES COUNTY, OHIO.
PRAIRIE TOWNSHIP



REVISION	DATE	BY	NO.
1927			
1928			
1929			
1930			
1931			
1932			
1933			
1934			
1935			
1936			
1937			
1938			
1939			
1940			
1941			
1942			
1943			
1944			
1945			
1946			
1947			
1948			
1949			
1950			
1951			
1952			
1953			
1954			
1955			

Correct as of Dec. 31st, 1955: No Revision
 Correct as of Dec. 31st, 1954: No Revision
 Correct as of Dec. 31st, 1953: No Revision
 Correct as of Dec. 31st, 1952: No Revision
 Correct as of Dec. 31st, 1951: No Revision
 Correct as of Dec. 31st, 1950: No Revision
 Correct as of Dec. 31st, 1949: No Revision
 Correct as of Dec. 31st, 1948: No Revision
 Correct as of Dec. 31st, 1947: No Revision
 Correct as of Dec. 31st, 1946: No Revision
 Correct as of Dec. 31st, 1945: No Revision
 Correct as of Dec. 31st, 1944: No Revision
 Correct as of Dec. 31st, 1943: No Revision

Correct as of Dec. 31st, 1942: No Revision
 Correct as of Dec. 31st, 1941: No Revision
 Correct as of Dec. 31st, 1940: No Revision
 Correct as of Dec. 31st, 1939: No Revision
 Correct as of Dec. 31st, 1938: No Revision
 Correct as of Dec. 31st, 1937: No Revision
 Correct as of Dec. 31st, 1936: No Revision
 Correct as of Dec. 31st, 1935: No Revision
 Correct as of Dec. 31st, 1934: No Revision
 Correct as of Dec. 31st, 1933: No Revision
 Correct as of Dec. 31st, 1932: No Revision
 Correct as of Dec. 31st, 1931: No Revision
 Correct as of Dec. 31st, 1930: No Revision

Correct as of Dec. 31st 1929 Map Revised
 Correct as of Dec. 31st 1928 No Revision
 Correct as of Dec. 31, 1927 No Revision
 Correct as of June 30, 1927 No Revision
 Correct as of June 30, 1926 No Revision
 Correct as of June 30, 1925 No Revision
 Correct as of June 30th 1924 No Revision
 Correct as of June 30th 1923 No Revision
 Correct as of June 30th 1922 No Revision
 Correct as of June 30th 1921 No Revision
 Correct as of June 30th 1920 No Revision
 Correct as of June 30th 1919 No Revision
 Correct as of June 30th 1918 No Revision
 Correct as of June 30th 1917 No Revision

Sheet No. 27 V. 21 Ohio of Cleveland, Akron and Cincinnati Railway
 from Survey Station 2817+98 to Survey Station 2870+78

CONNECTING RAILWAY
 FORMERLY
 RIGHT OF WAY AND TRACK MAP
 CLEVELAND, AKRON AND CINCINNATI RAILWAY
 OPERATED BY THE
PENNSYLVANIA COMPANY
 AKRON DIVISION
 STATION 2817+98 TO STATION 2870+78
 SCALE: 1"=100 FT. JUNE 30, 1918
 OFFICE OF VALUATION ENGINEER
 PITTSBURGH, PA.

