

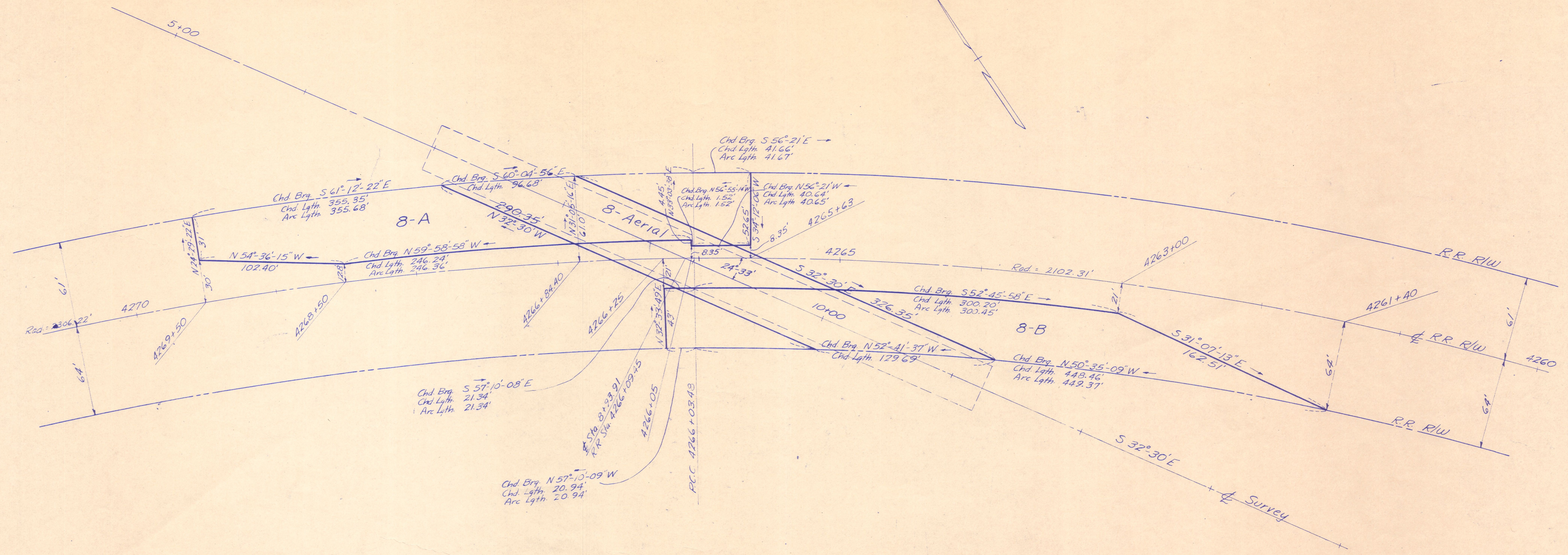
US 62 10

HOLMES COUNTY RICHLAND TWP. T-8N R-9W SEC. 25

FED. RD. DIVISION	STATE	PROJECT
2	OHIO	

1-A
3

KNO - 62 - 22.82
HOL - 62 - 0.00



CLEVELAND, AKRON & CINCINNATI RAILWAY

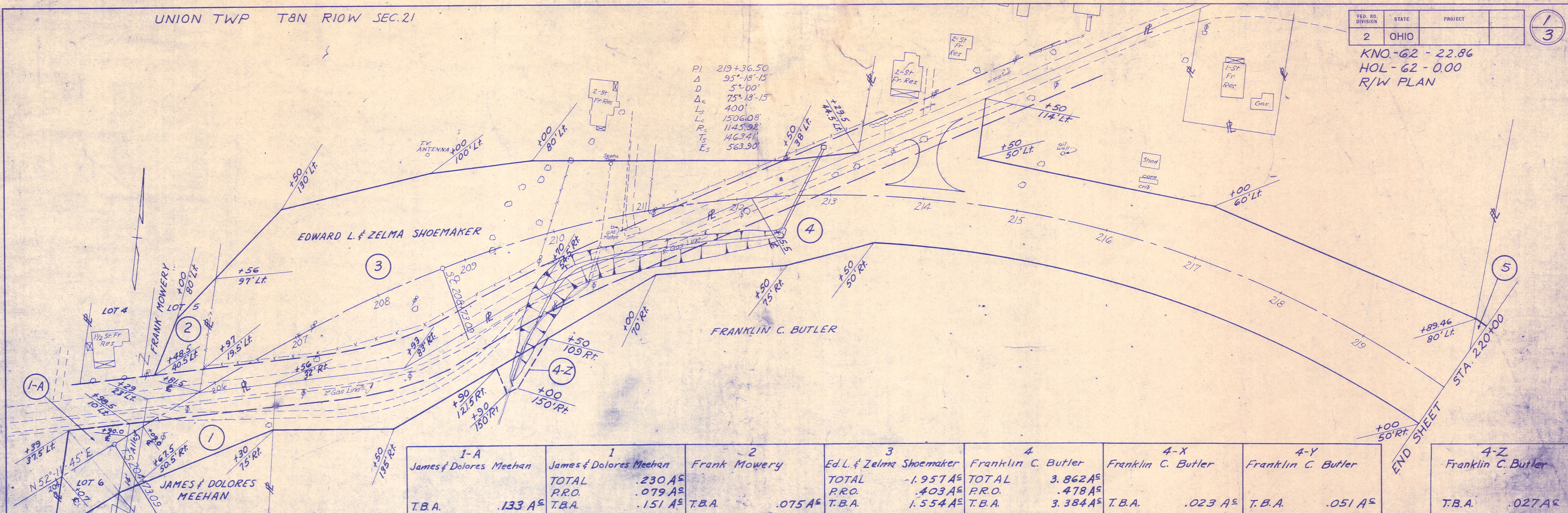
8-Aerial	.320 Ac.
8-A	.390 Ac.
8-B	.421 Ac.

NOTE: Valuation survey stations shown are referred to those shown on Railway RIW track map V-10, formerly V-21 Sheet No. 54

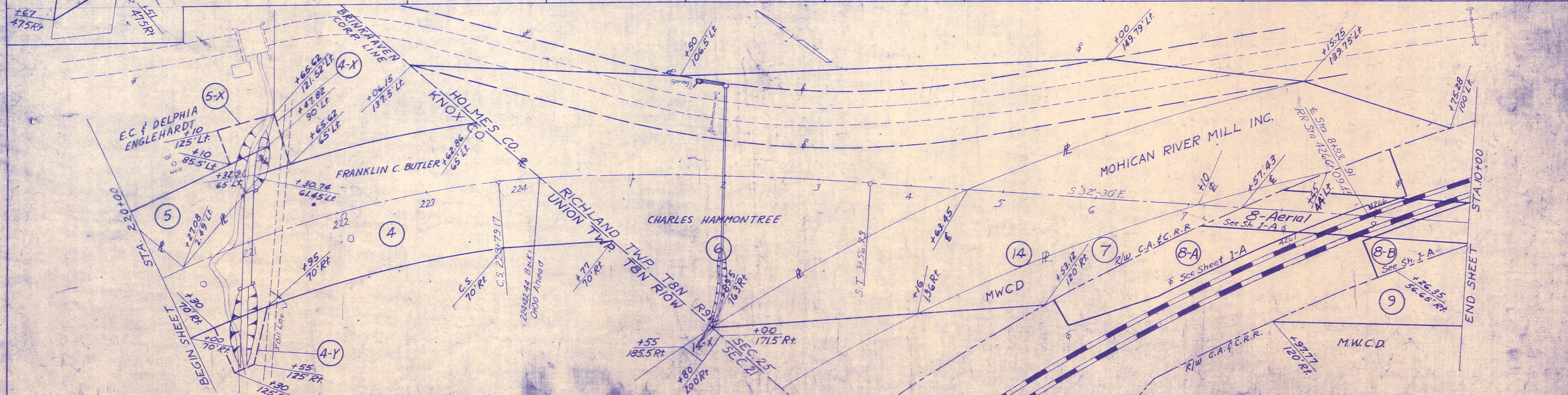
SCALE 1"=40'
Completion Date Feb. 1, 1957

KNO-62 - 22.86
 HOL-62 - 0.00
 R/W PLAN

PI 219+36.50
 Δ 95° 18' 15"
 Δc 5° 00"
 Δs 75° 13' 15"
 Ls 400'
 Lc 1506.08'
 Rc 1145.92'
 Ts 146.341'
 Es 563.90'



1-A James & Dolores Meehan	1 James & Dolores Meehan	2 Frank Mowery	3 Ed. L. & Zelma Shoemaker	4 Franklin C. Butler	4-X Franklin C. Butler	4-Y Franklin C. Butler	4-Z Franklin C. Butler
T.B.A.	TOTAL .230 A [±] P.R.O. .079 A [±] T.B.A. .133 A [±]	T.B.A.	TOTAL -1.957 A [±] P.R.O. .403 A [±] T.B.A. 1.554 A [±]	TOTAL 3.862 A [±] P.R.O. .478 A [±] T.B.A. 3.384 A [±]	T.B.A.	T.B.A.	T.B.A.
		.075 A [±]			.023 A [±]	.051 A [±]	.027 A [±]

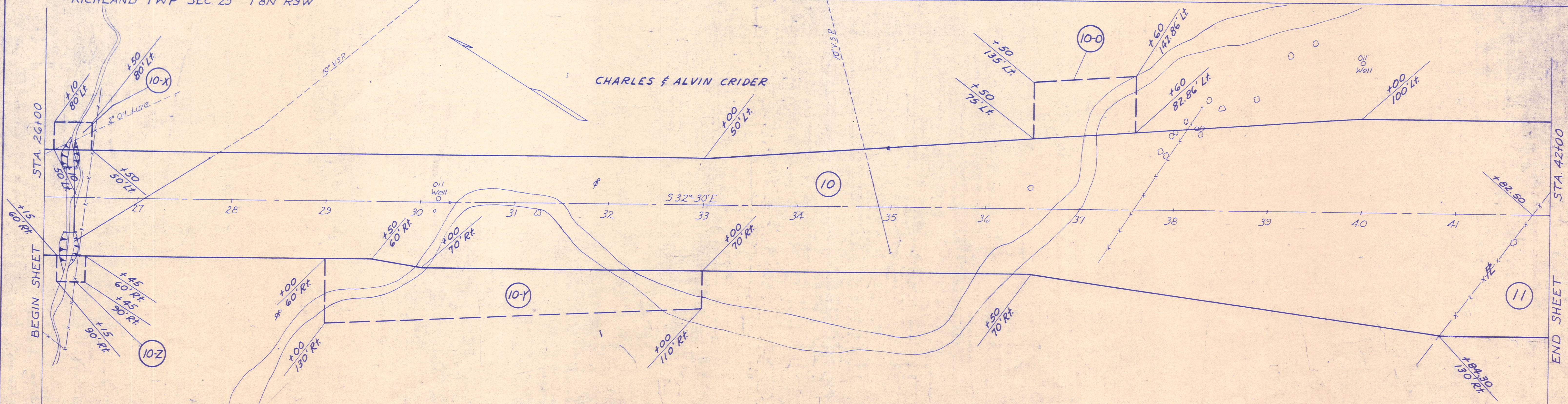
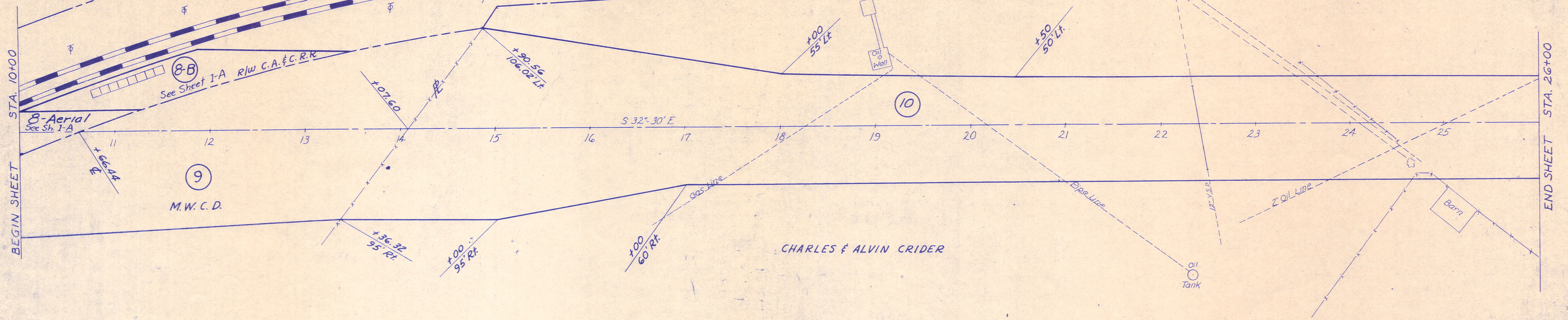


5-X E.C. & Delphia Englehardt	5 E.C. & Delphia Englehardt	6 Charles Hammontree	7 M.W.C.D.	14-X MOHICAN RIVER MILL INC.	14 MOHICAN RIVER MILL INC.
T.B.A.	TOTAL .042 A [±] T.B.A. .181 A [±]	TOTAL 2.850 A [±] P.R.O. 1.014 A [±] T.B.A. 1.836 A [±]	T.B.A.	TOTAL .016 A [±] T.B.A.	TOTAL 1.509 A [±]
		.266 A [±]			

FED. RD. DIVISION	STATE	PROJECT
2	OHIO	

2
3

KNO-62-22.86
HOL-62-0.00
R/W PLAN

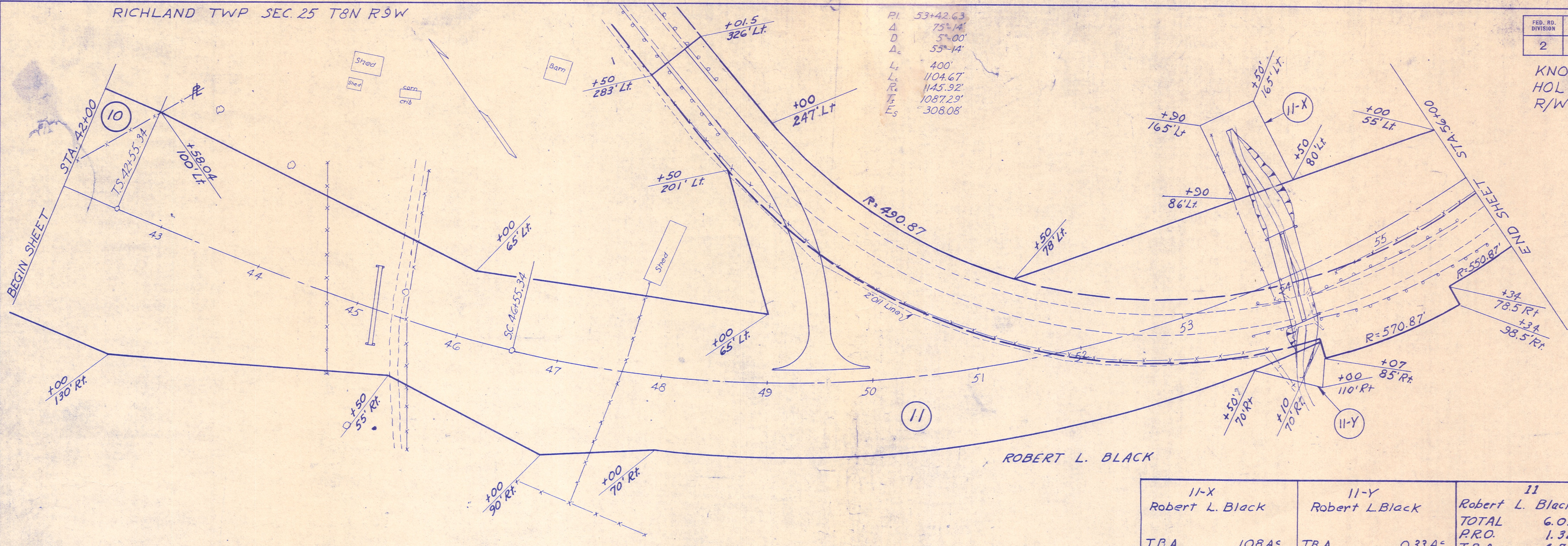


9 M.W.C.D. T.B.A.	10 Charles & Alvin Crider T.B.A.	10-X Charles & Alvin Crider T.B.A.	10-Y Charles & Alvin Crider T.B.A.	10-Z Charles & Alvin Crider T.B.A.	10-O Charles & Alvin Crider T.B.A.
1.562 A [±]	8.739 A [±]	0.028 A [±]	0.476 A [±]	.021 A [±]	.152 A [±]

RICHLAND TWP SEC. 25 T8N R9W

FED. RD. DIVISION	STATE	PROJECT	3 3
2	OHIO		

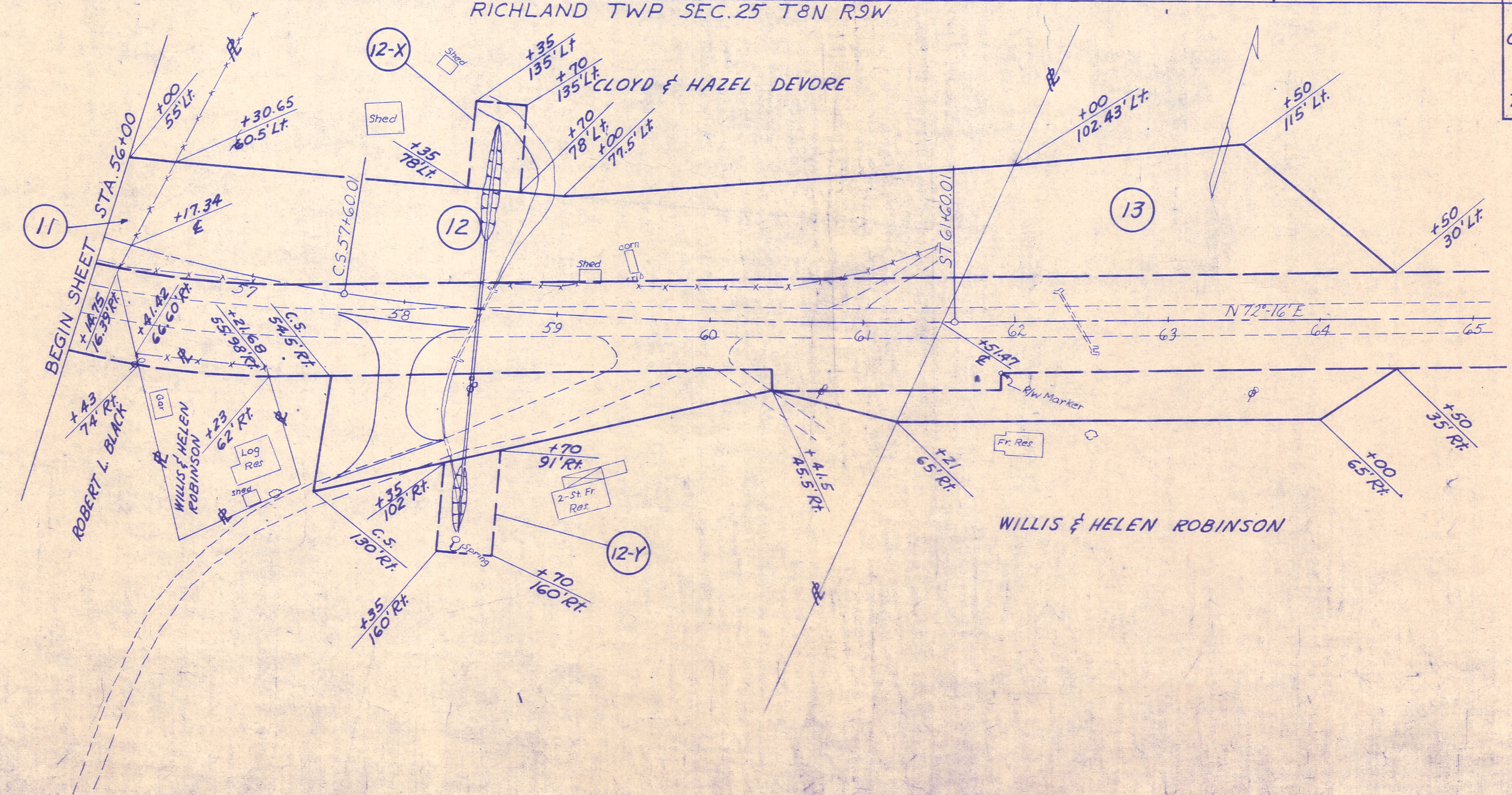
KNO-62-22.86
HOL-62-000
R/W PLAN



PI 53+42.63
Δ 75°14'
D 5°00'
Ac 53°14'
Lc 400'
Lc 1104.67'
Rc 1145.92'
Ts 1087.29'
Es 308.08'

11-X Robert L. Black T.B.A.	11-Y Robert L. Black T.B.A.	11 Robert L. Black TOTAL 6.059 A [±] P.R.O. 1.328 A [±] T.B.A. 4.731 A [±]	12 Cloyd & Hazel Devore TOTAL 1.900 A [±] P.R.O. .746 A [±] T.B.A. 1.154 A [±]
	12-X Cloyd & Hazel Devore T.B.A.	12-Y Cloyd & Hazel Devore T.B.A.	13 Willis & Helen Robinson TOTAL 1.041 A [±] P.R.O. .437 A [±] T.B.A. .604 A [±]

RICHLAND TWP SEC. 25 T8N R9W

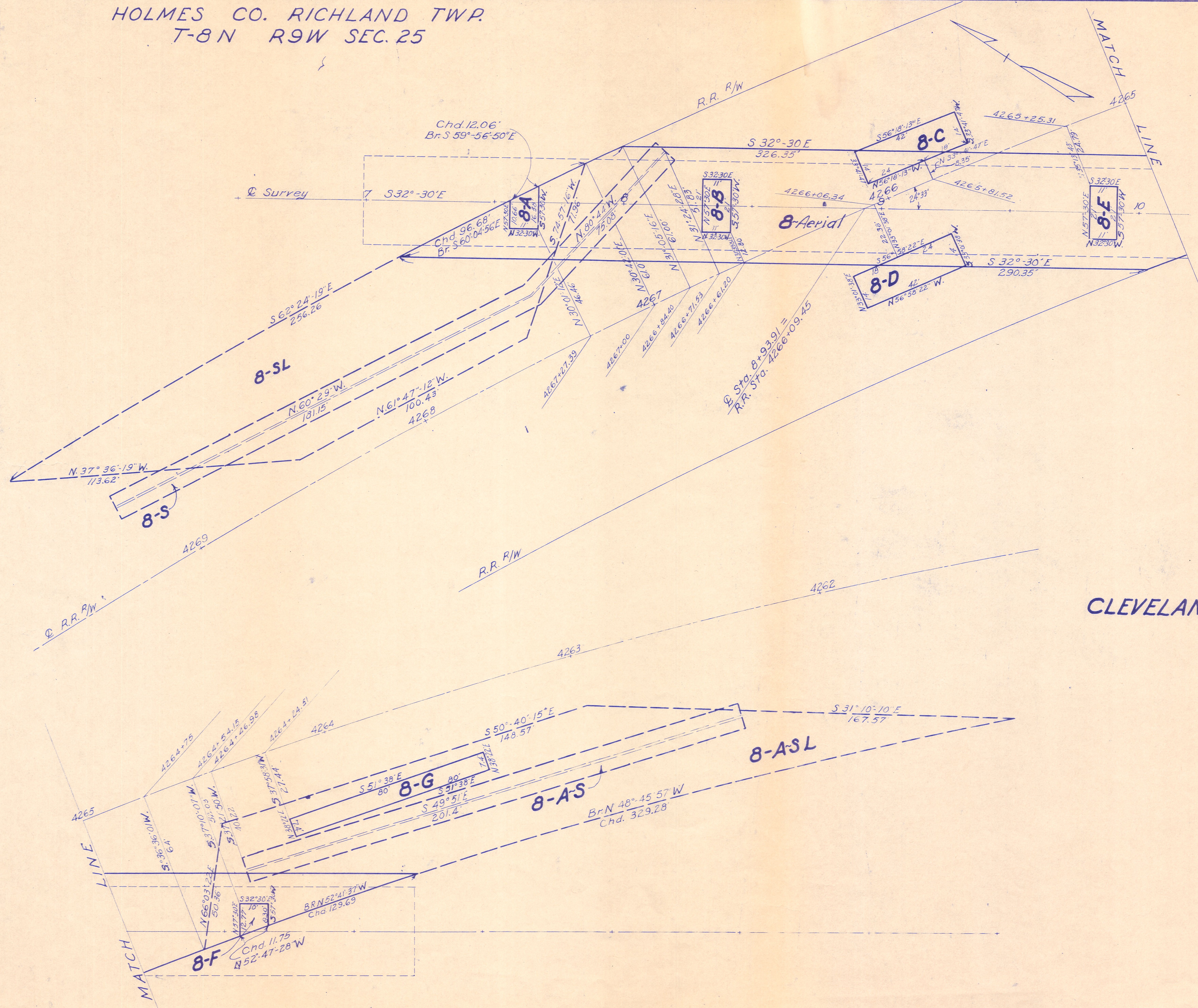


WILLIS & HELEN ROBINSON

HOLMES CO. RICHLAND TWP.
T-8N R9W SEC. 25

FED. RD. DIVISION	STATE	PROJECT
2	OHIO	

KNO-62-22.82
HOL-62-0.00



CLEVELAND, AKRON AND CINCINNATI RAILWAY

8 - Aerial	0.32 A ^c
8 - A	0.003 A ^c
8 - B	0.005 A ^c
8 - C	0.013 A ^c
8 - D	0.013 A ^c
8 - E	0.005 A ^c
8 - F	0.003 A ^c
8 - G	0.014 A ^c
8 - S	0.06 A ^c
8 - AS	0.05 A ^c
8 - SL	0.021 A ^c
8 - ASL	0.234 A ^c
TOTAL	0.926 A^c T.B.A.

Note: Valuation Survey Stations shown are referred to those shown on Railway R/W track map V-10 formerly V-21 Sheet N^o 54

Scale 1"=20'