

STATE OF OHIO DEPARTMENT OF HIGHWAYS

FED. RD. DIVISION	STATE	PROJECT
2	OHIO	ER-60(3)

1
9

HOL-62-28.40

ER-60(3)

HOL - 62 - 28.40 HOLMES COUNTY BERLIN TOWNSHIP

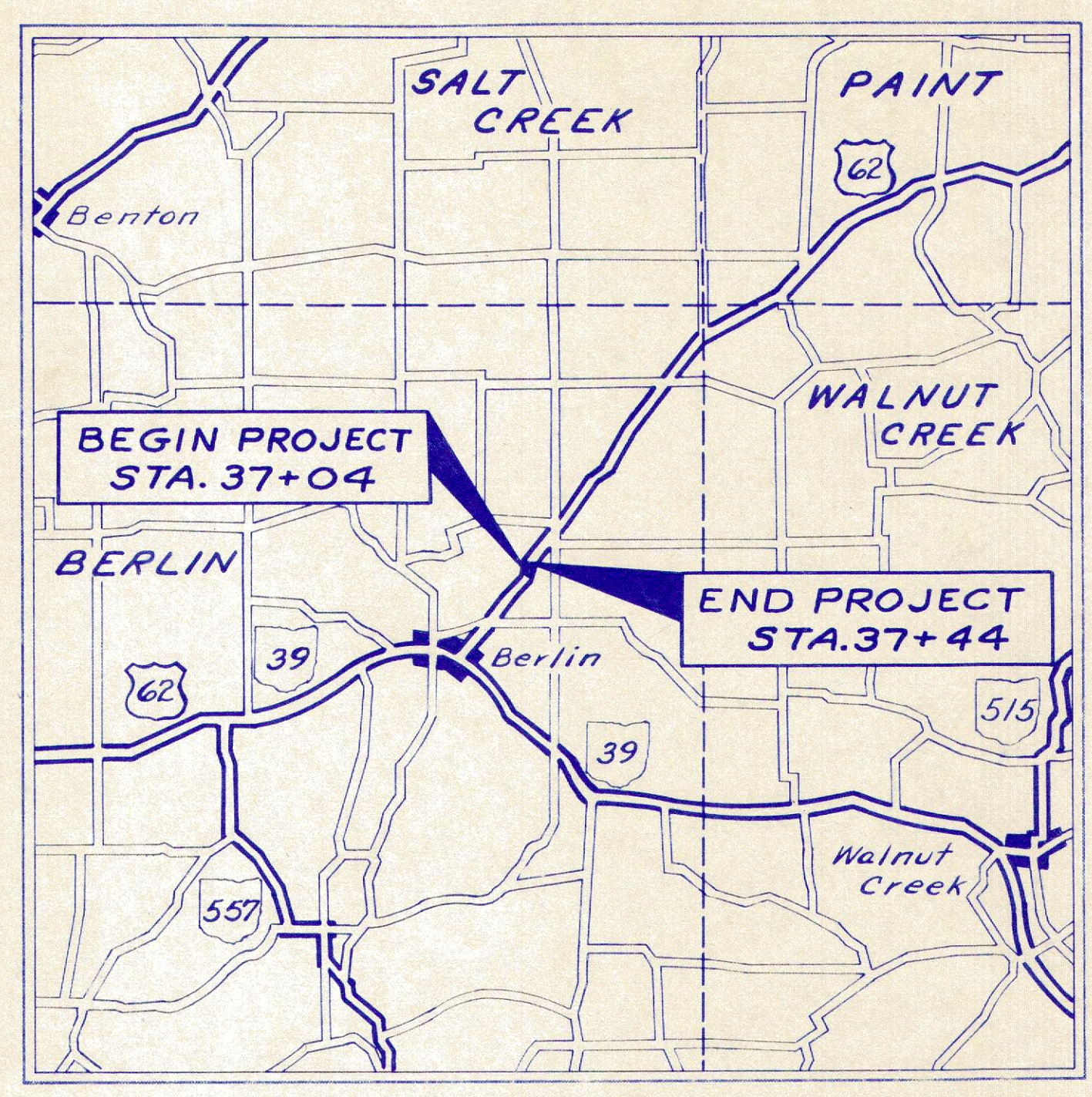
CONVENTIONAL SIGNS

County Line	Right of Way (only)
Township Line	Existing Right of Way
Section Line	Property Line
Corporation Line or	Railroad
Fence Line (existing) (proposed)	Guardrail (existing) (proposed)
Center Line	
Trees , Stumps (to be removed)	
Utility Poles: Telephone , Power , Light	

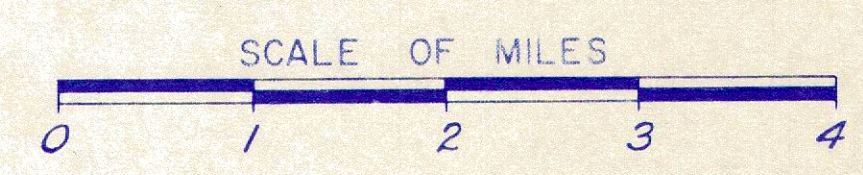
INDEX OF SHEETS

- TITLE PAGE
- TYPICAL SECTION & DESIGN DESIGNATION
- GENERAL NOTES
- SUMMARY OF QUANTITIES AND GENERAL SUMMARY
- PLAN AND PROFILE
- CROSS SECTIONS
- DRAINAGE DETAILS
- RIGHT OF WAY

- 1
- 2
- 3
- 4
- 5
- 6-7
- 8
- 9



LOCATION MAP



Portion to be improved	
State Roads	
Other Roads	

SCALES

Plan	
Profile: Horizontal	
Profile: Vertical	

LINE DATA

STA. 37+04 to STA. 37+44 = 40 Lin. Ft.
NET LENGTH OF PROJECT = 40 Lin. Ft. or 0.007 Miles

STA. 34+22 to STA. 39+39 = 517 Lin. Ft.
NET LENGTH OF WORK = 517 Lin. Ft. or 0.097 Miles

1971 SPECIFICATIONS

The standard specifications of the State of Ohio, Department of Highways, including changes and supplemental specifications listed in the proposal shall govern this improvement.

The right-of-way for this improvement will be provided by the State of Ohio.

I hereby approve these plans and declare that the making of this improvement will not require the closing to traffic of the highway and that provisions for the maintenance and safety of traffic will be as set forth on these plans and estimates.

- Approved _____
Date _____ Division Deputy Director
- Approved *C. H. Altvater*
Date 3-25-71 Engineer of Bridges
- Approved *E. J. Schaefer*
Date 3-22-71 Engineer of Location & Design
- Approved *H. Krause*
Date 3-22-71 Deputy Director of Design & Construction
- Approved _____
Date _____ Deputy Director of Right of Way
- Approved *William Sunkley*
Date 4-6-71 Deputy Director of Planning & Programming
- Approved _____
Date _____ First Assistant Director
- Approved _____
Date _____ Director of Highways

SUPPLEMENTAL PRINTS OF STANDARD CONSTRUCTION DRAWINGS			
BP-5	1-1-71	SP-53	6-30-61
BP-2	12-1-68	FACI-1	9-15-67
		FACI-2	6-1-65
GR-2A	1-1-71		
GR-4	1-1-71		
L-1	6-1-65		
MC-3	6-20-69		
MC-4	6-13-69		

SUPPLEMENTAL SPECIFICATIONS	
1001	1-1-69

DEPARTMENT OF TRANSPORTATION
FEDERAL HIGHWAY ADMINISTRATION

APPROVED: _____

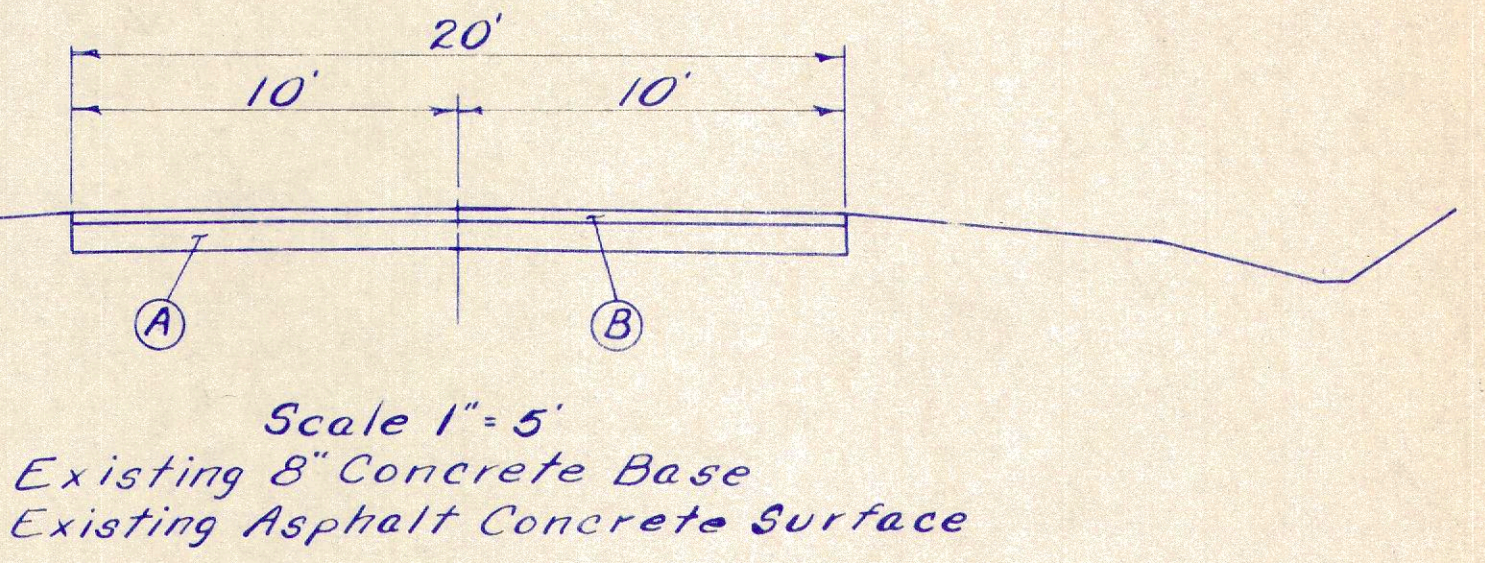
DIVISION ENGINEER _____ DATE _____

Project: HOLMES CO. HOL-62-28.40
Date of Letting 19 _____ Contract No. _____

SEAL

HOL-62-28.40

Rock Channel Protection
Lt. 34' x 2' x 6' ÷ 27 = 15 Cu. Yds.



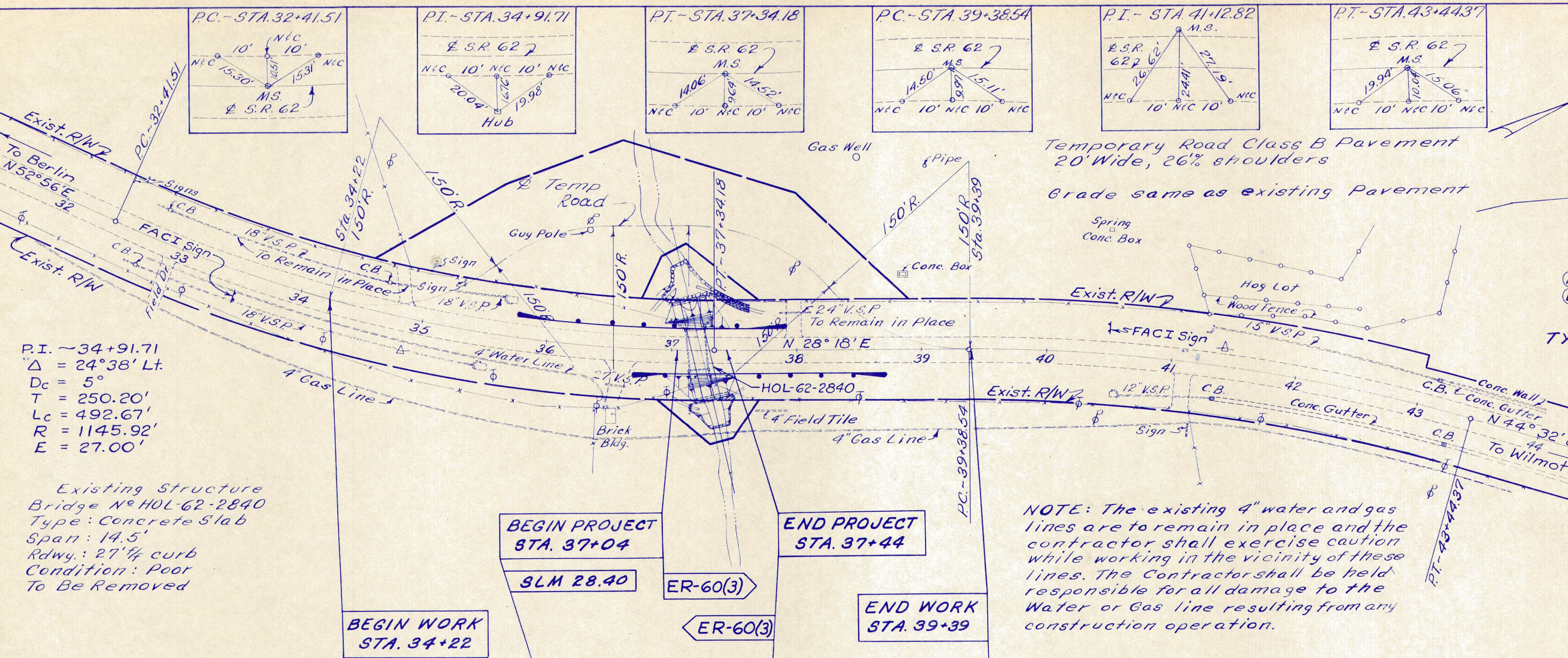
TYPICAL SECTION ADJOINING PAVEMENT

- (A) Existing 8" Concrete Base
- (B) Existing Asphalt Concrete Surface

DRAINAGE						
Station	See Sheet	Side	New Work	Remarks		
From	To	£	Type Size Length			
37+24		8	Lt Pipe 14" x 8" 82'	Existing Structure To Be Removed		
TOTAL						

GUARD RAIL				
Station	Side	Type	Anchor Assembly	
From	To	£ Lin. Ft.	Each	
35+77.5	Lt.		1	
36+02.5	Lt.	162.5		
37+65	Lt.		1	
36+70	Rt.		1	
36+95	Rt.	150		
38+45	Rt.		1	
TOTAL 312.5 4				

EROSION CONTROL			
Station	Side	Rock Channel Protection	
From	To	£ Type B Cu. Yds.	
37+26	Lt.	15	
TOTAL 15			

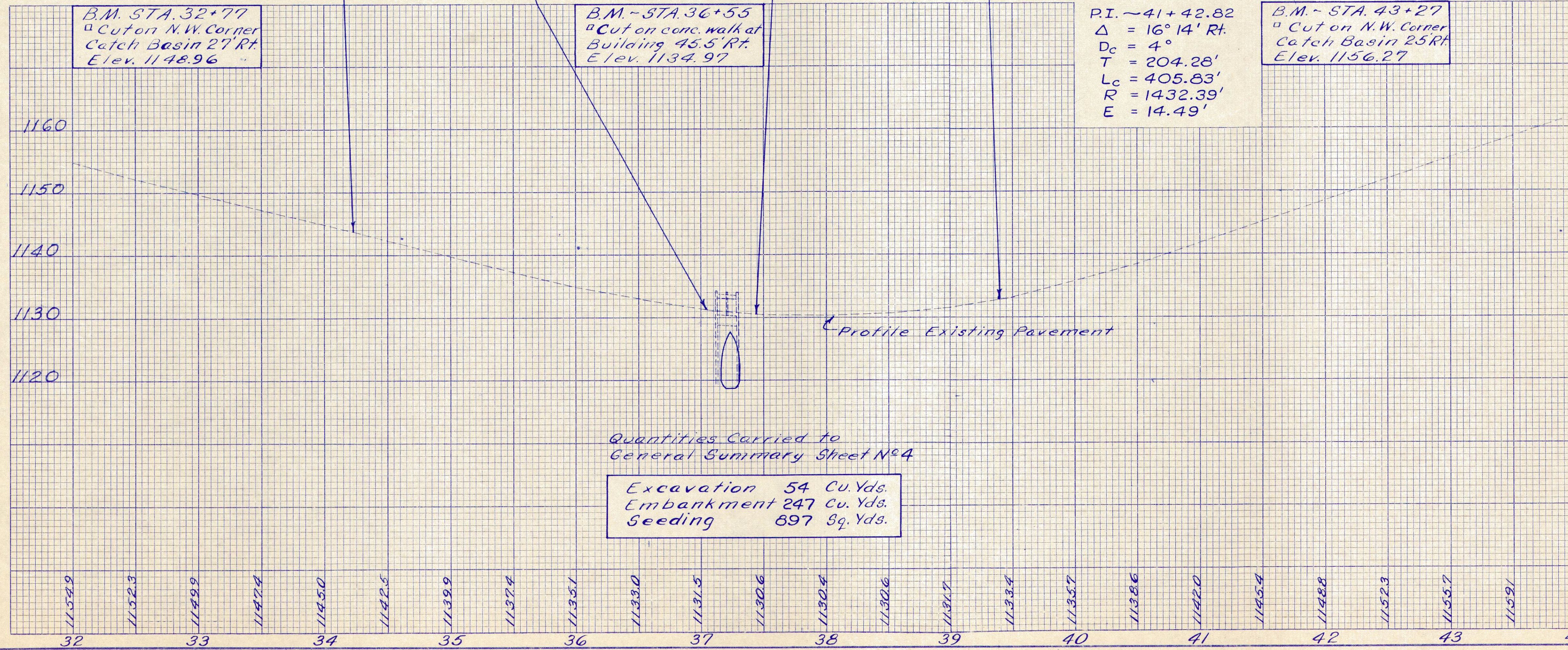


P.I. ~ 34+91.71
 $\Delta = 24^\circ 38' Lt.$
 $D_c = 5'$
 $T = 250.20'$
 $L_c = 492.67'$
 $R = 1145.92'$
 $E = 27.00'$

Existing Structure
 Bridge N° HOL-62-2840
 Type: Concrete Slab
 Span: 14.5'
 Rdwy.: 27" 1/4 curb
 Condition: Poor
 To Be Removed

BEGIN PROJECT STA. 37+04
 END PROJECT STA. 37+44
 BEGIN WORK STA. 34+22
 END WORK STA. 39+39

NOTE: The existing 4" water and gas lines are to remain in place and the contractor shall exercise caution while working in the vicinity of these lines. The Contractor shall be held responsible for all damage to the Water or Gas line resulting from any construction operation.



Quantities Carried to
 General Summary Sheet N° 4

Excavation	54 Cu. Yds.
Embankment	247 Cu. Yds.
Seeding	897 Sq. Yds.

