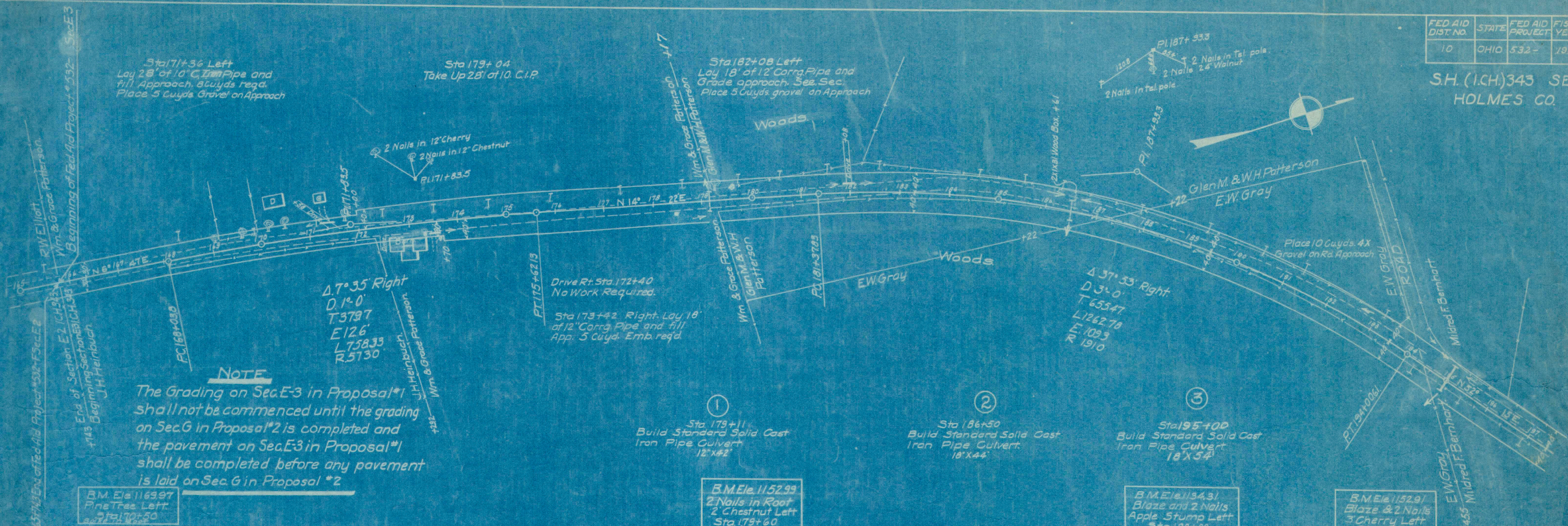


FED AID DIST NO	STATE	FED AID PROJECT	FISCAL YEAR	3
10	OHIO	532-	1981	62

S.H. (I.C.H.) 343 SEC E-3
HOLMES CO.



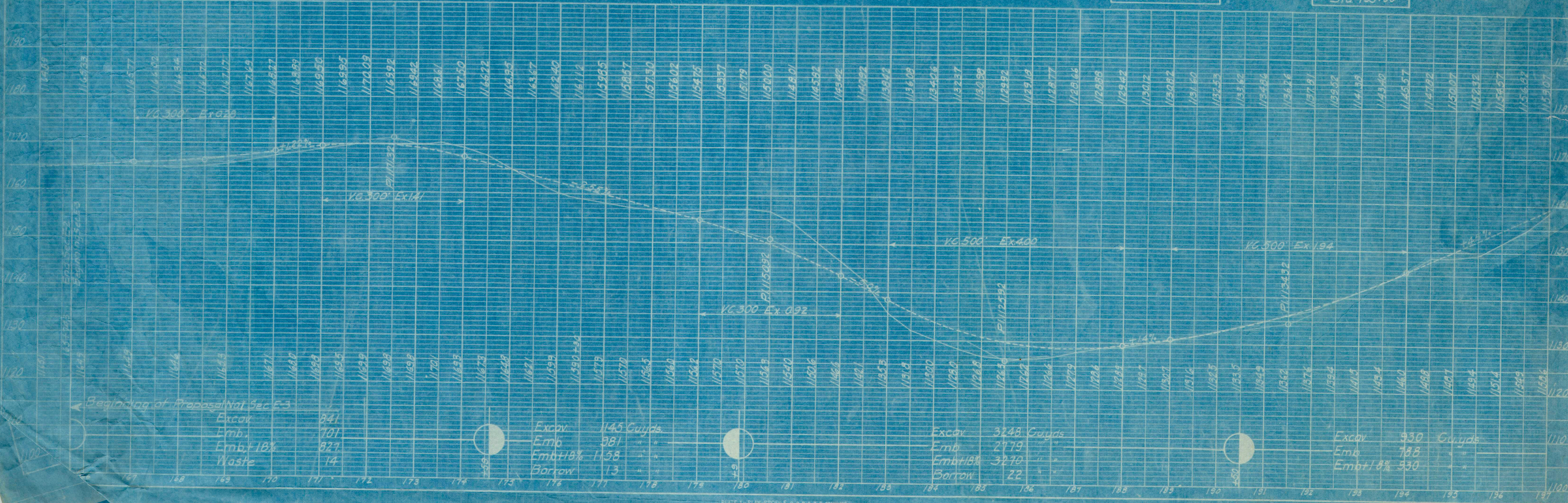
NOTE
The Grading on Sec. E-3 in Proposal #1 shall not be commenced until the grading on Sec. G in Proposal #2 is completed and the pavement on Sec. E-3 in Proposal #1 shall be completed before any pavement is laid on Sec. G in Proposal #2

B.M. Ele 116997
Pine Tree Left
Sta 170+50

B.M. Ele 115299
2 Nails in Root
2 Chestnut Left
Sta 179+60

B.M. Ele 113431
Blaze and 2 Nails
Apple Stump Left
Sta 188+00

B.M. Ele 115291
Blaze & 2 Nails
3 Cherry Left
Sta 195+00



FED. AID DIST. NO.	STATE	FED. AID PROJECT	FISCAL YEAR
10	OHIO	532	1931

SH(1.C.H.)343 SEG. E-3
HOLMES CO.

②

Sta 226+16
Build Stand. H. Solid C.I.P. Culvert
12' x 68'

①
Sta 223+44
Build Standard Solid Cast
Iron Pipe Culvert
18' x 54'

B.M. Elev. 1161.94
U.S.P. B.M. at Tr. Rd.
Stamped 1162.00

Sta 198+30, lay 16' of 12" Corng. Pipe
for Drive Right and fill approach
4 Cu yds. required.

Sta 199+21, lay 20' of 12" Corng. Pipe
for Drive Left and grade approach
16' wide 15 Cu yds. Excav. required
Place 5 Cu yds. Gravel on Approach

B.M. Elev. 1164.03
Blaze and 2 Nails
Leaning Apple Right
Sta 199+30

Sta 205+72 to Sta 207+72
Build 200' Std. Type 'D' Guard Rail
Left

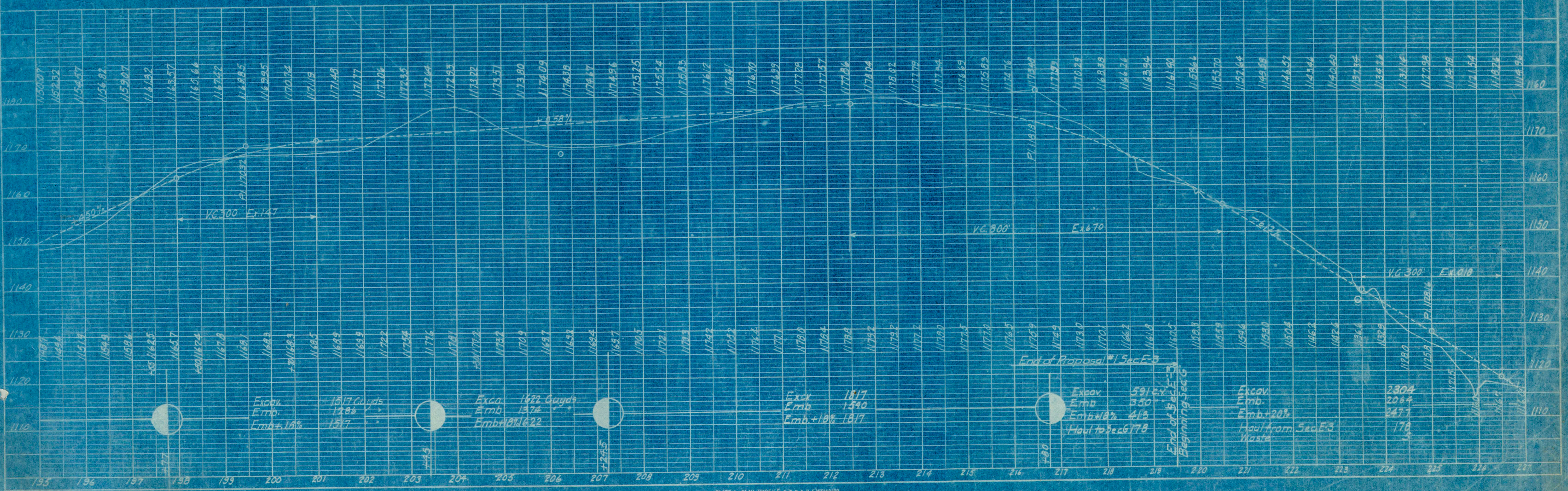
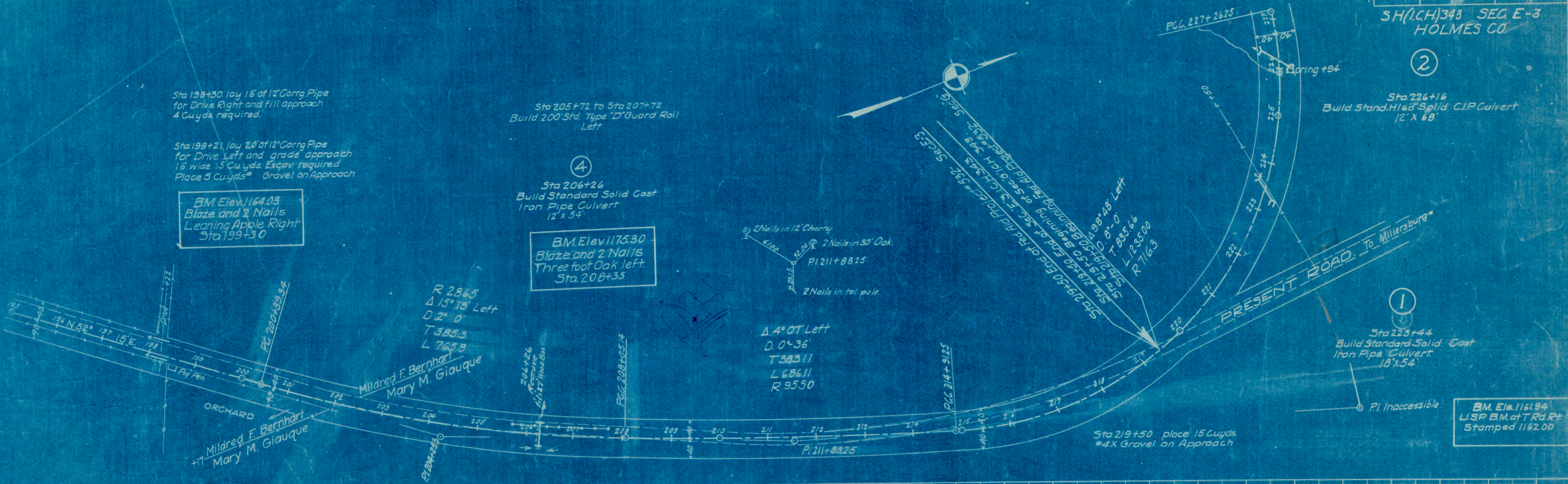
④
Sta 206+26
Build Standard Solid Cast
Iron Pipe Culvert
12' x 54'

B.M. Elev. 1175.30
Blaze and 2 Nails
Three foot Oak left
Sta 208+35

2 Nails in 12" Cherry
2 Nails in 30" Oak
P.I. 211+88.25
2 Nails in tel. pole.

Δ 4° 07' Left
D. 0° 36'
T 383.11
L 686.11
R 955.0

Sta 219+50 place 15 Cu yds.
#4X Gravel on Approach



FED. AID DIST. NO.	STATE	FED. AID PROJECT	FISCAL YEAR	5/62
10	OHIO	532-	1931	62

S.H.(C.H.)343 SEC. G
HOLMES CO.

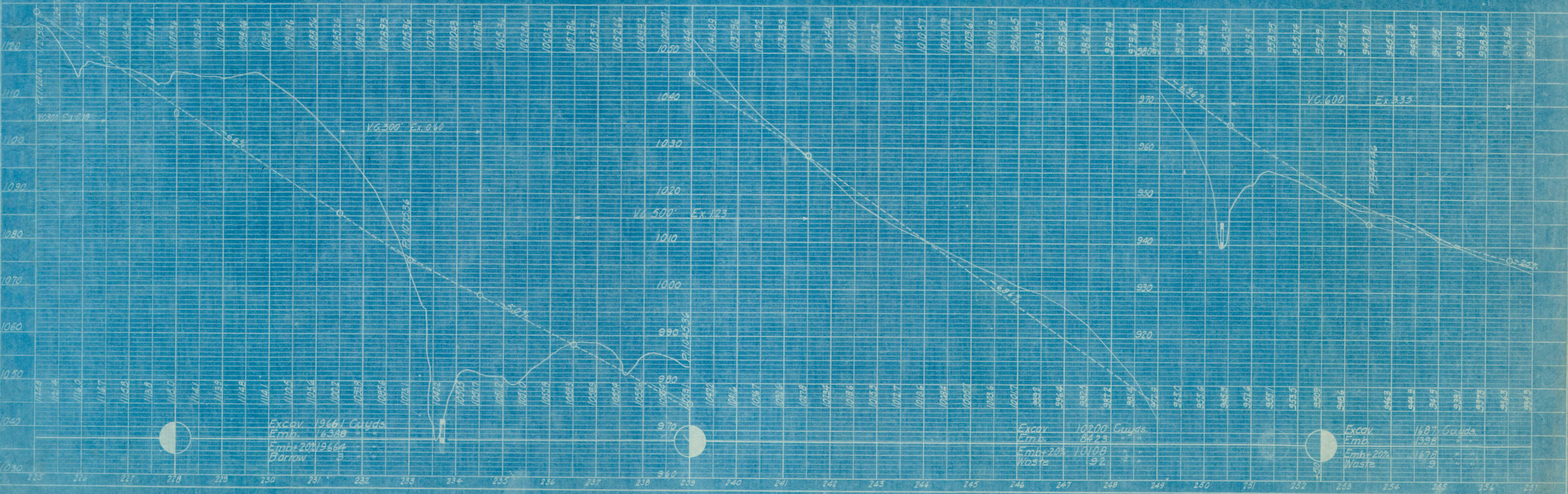
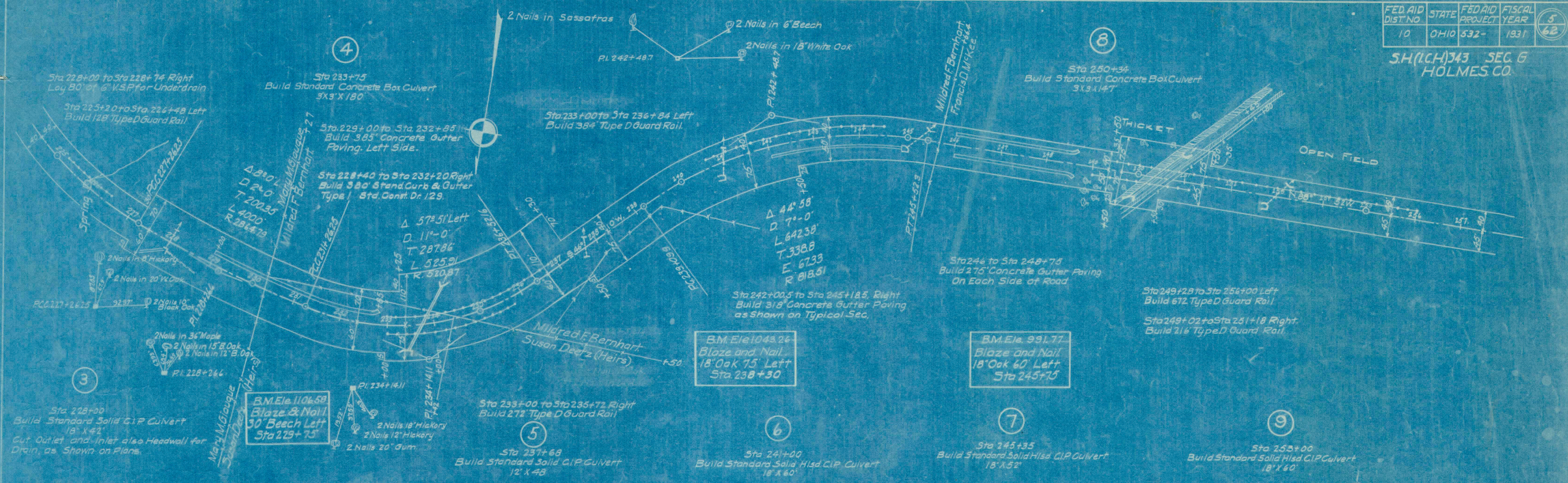


PLATE 1 - PLAN - PROFILE OF F.R.R.E. STATIONED
KRIEGER & EBER CO., NEW YORK.

FED. AID DIST. NO.	STATE	FED. AID PROJECT YEAR	FISCAL YEAR
10	OHIO	532-	1931

SH. (I.C.H.) 343, SEC. G
HOLMES CO.

DATE	
BY	
SURVEYED	
NOTE BOOK	
ALIGNED	
RT. OF WAY CHECKED	
NO.	

DATE	
BY	
SURVEYED	
NOTE BOOK	
B. M. S. NOTED	
STRUCTURE NOTED	
NO.	

Sta 257+70
Build Standard Concrete Culvert & Cattle pass
4' X 6' X 4' feet

10

Sta 257+44 to Sta 262+24 Left
Build 480' Type D Guard Rail

B.M. Elev. 931.14
Blaze and Nail
24' Walnut 40' Left
Sta 257+25

Sta 260+50
Build Std. Hlzd. Culv. as shown
on Culvert Plans
18" X 66" ft.

B.M. Elev. 899.43
Blaze and Nail
18' Oak 45' Left
Sta 272+00

Sta 263+70 to Sta 274+66 Left
Build 1096' Type D Guard Rail

Sta 267+72 to Sta 271+24 Right
Build 352' Type D Guard Rail

Sta 270+65
Build Standard Solid C.I. Pipe Culvert
24" X 52'

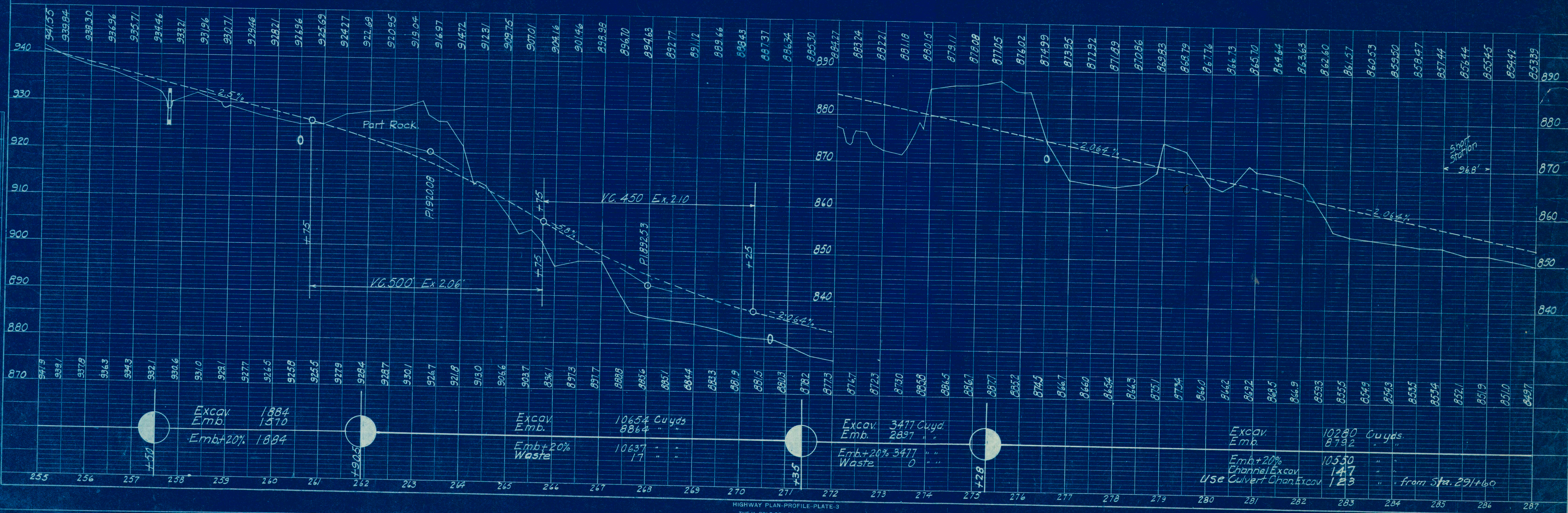
Sta 275+80 to Sta. 278+20 Left
Build 240' Type D Guard Rail

Sta 276+50
Build Standard Solid C.I. Pipe Culvert
18" X 44'

Sta 279+50
Build Standard Solid C.I.P. Culvert
18" X 44'

14

Sta. 283+60
Lay 20' ft of 18" Corr. Pipe
on Right and fill approach
Right + Left 66 Cu. Yds. Req'd.



FED AID DIST NO	STATE	FED AID PROJECT YEAR	FISCAL YEAR
10	OHIO	532-	1931

7
62

S.H. (I.C.H.) 343, SEC-G
HOLMES CO.

19

Sta 315+50
Build Standard Side Road Solid C.I.P. Culvert
18" X 44"

Sta 301+20
Build Standard H.I. Solid C.I.P. Culvert
18" X 52"

17

Nail in 30" Beech

Nail in 18" Ash

P.I. 300+24.3

P.I. 300+24.8

H. Huebner
John Bucklew (Heir)

Sta 288+15 to Sta 291+30
Cut New Channel on Rt. as shown
on X Sections. 147 Cu. Yds. Excav. Reqd.

$\Delta 5^{\circ} 12'$ Left
D 0° 36'
T 433.7
L 866.7
Ex 3.8
R 9550

$\Delta 15^{\circ} 30'$ Right
D 4° 00'
T 1949.5
L 387.50
Ex 13.2
R 1432.5

Sta 291+59 to Sta 295+99 Left
Build 440 Type D Guard Rail

15

Sta 291+60
Build Standard Concrete Slab Culvert
8' X 6.5' X 5.5'

16

Sta 296+37
Build Standard Solid C.I. Pipe Culvert
18" X 42"

18

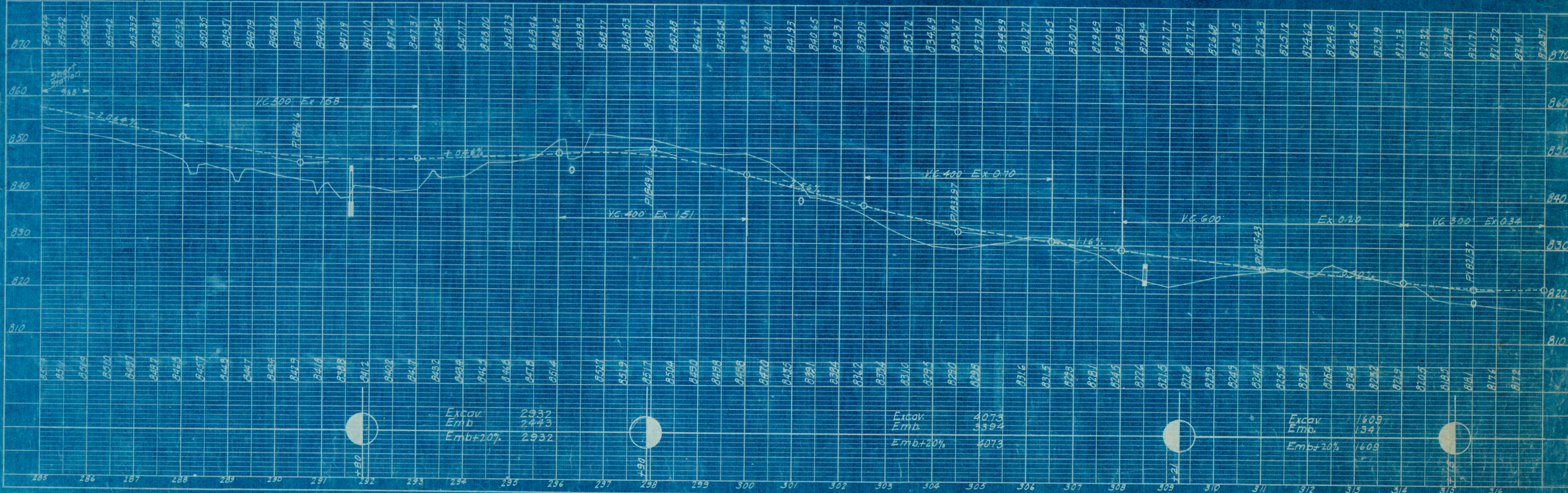
Sta 308+50
Build Standard Box Culvert
5' X 3' X 4.5' / 10"

BM Ele. 851.14
Blaze and Nail
12' Walnut 60' Right
Sta 286+25

BM Ele. 843.13
Spike in Twin Oaks Left
Sta 299+60

PLAN	DATE
BY	
NO.	

PROFILE	DATE
BY	
NO.	



FED. AID	STATE	FED. AID PROJECT	FISCAL YEAR
0110	OHIO	532-	1930.

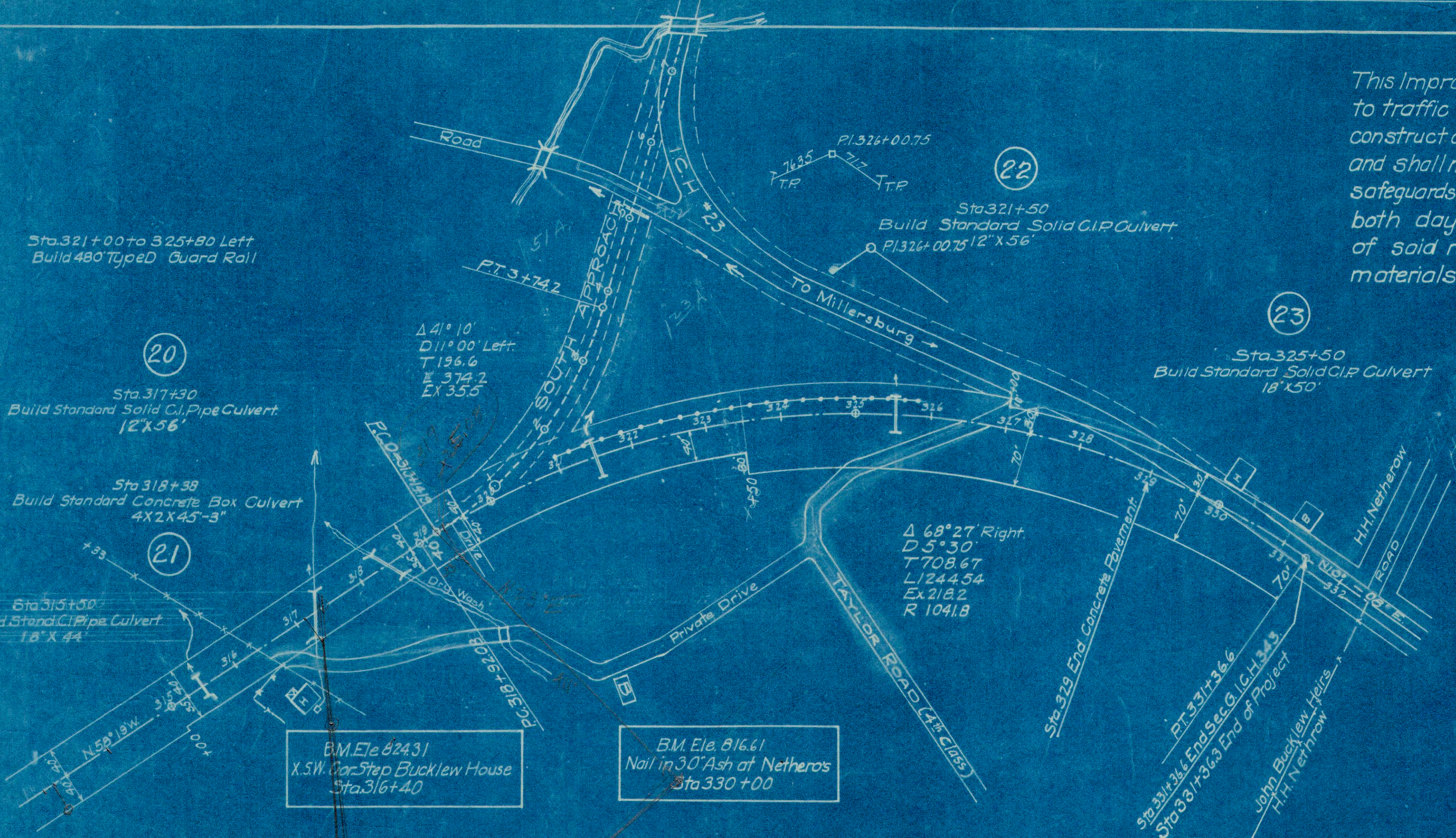
8
62

SH (CH) 343. SEC-G
HOLMES CO

NOTE

This Improvement does not contemplate the Closing of I.G.H.#23 to traffic and as a part of this Contract the Contractor shall construct all of his work under traffic from Sta 327+00 to Sta 331+36 and shall maintain traffic and shall provide all necessary protections, safeguards, lights, signalmen and watchmen, who shall be on duty both day and night and the present bituminous surface of said road shall be kept free from excavation and other materials.

Note:- Waste Excavation from Sta. 315+15 to Sta. 331+36.3 shall be placed on S. Approach Sta 320+50 left as directed by Engineer.



BM. Ele. 824.31
X.S.W. Corner Bucklew House
Sta. 316+40

BM. Ele. 816.61
Nail in 30" Ash of Netheros
Sta. 330+00

