

PRAIRIE TOWNSHIP SEC. 10 T. 13 R. 13

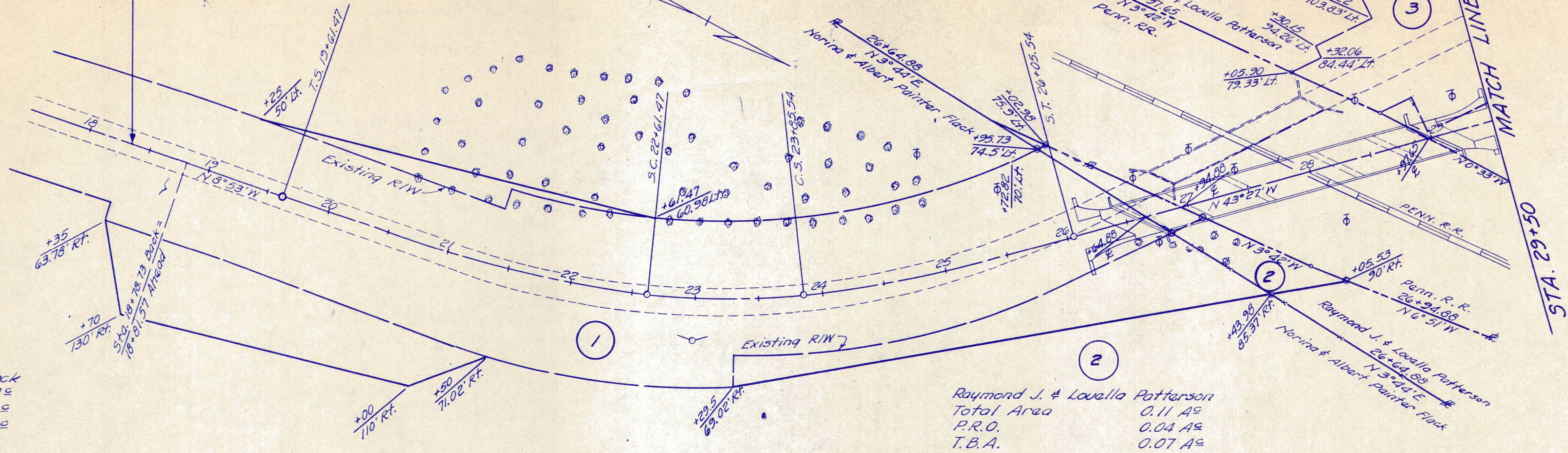
R/W PLANS
HOLMES COUNTY
S.H. 342 SEC. B-2 (PT)
Project No FG-532(14)

1
1

Data
Revised
Length of Project 0.400 Miles

$P.I. 23+06.33$
 $\Delta = 34^{\circ}34' Lt.$
 $\theta_s = 13^{\circ}30'$
 $L_s = 300'$
 $P = 5.88'$
 $X_c = 298.34'$
 $Y_c = 23.47'$
 $T_s = 344.86'$
 $\Delta c = 11^{\circ}10'$
 $D = 9^{\circ}00' Lt.$
 $L_c = 124.07'$
 $R = 636.62'$
 $\theta_s = 9^{\circ}54'$
 $L_s = 220'$
 $P = 3.17'$
 $X_c = 219.34'$
 $Y_c = 12.64'$
 $T_s = 313.73'$

STA. 18+35 - BEGIN
RIGHT OF WAY PROJECT



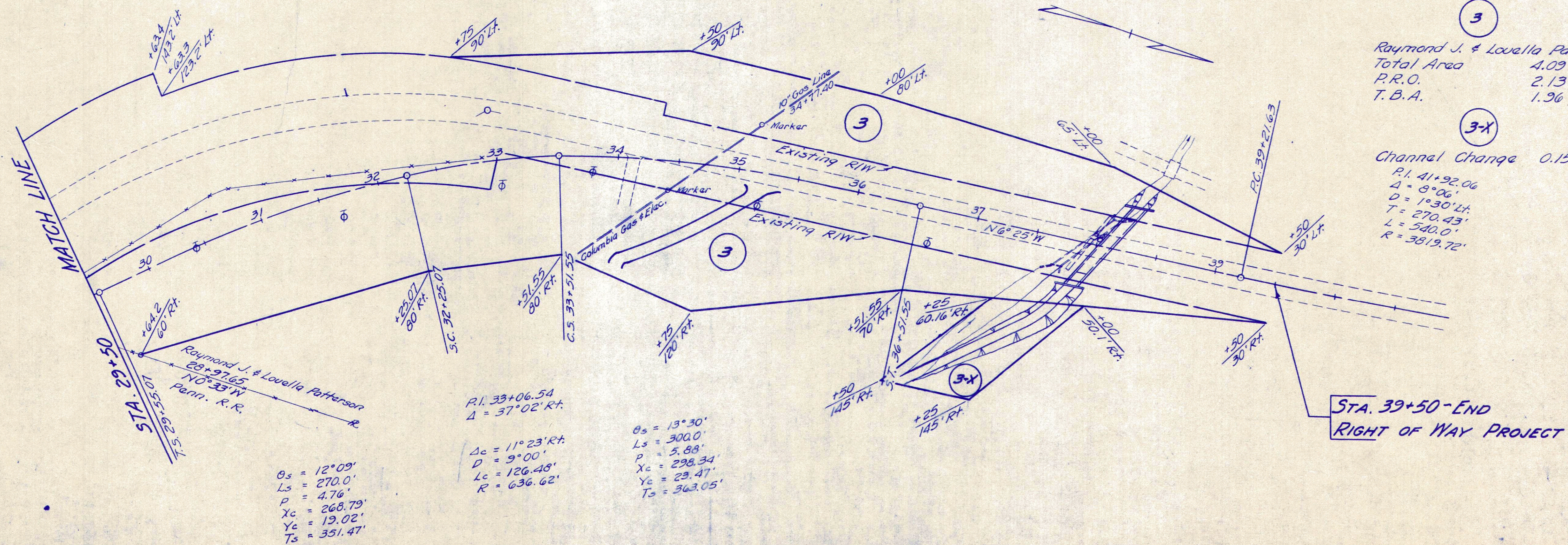
Norina & Albert Painter Flack
Total Area 2.86 A^c
P.R.O. 2.18 A^c
T.B.A. 0.68 A^c

Raymond J. & Lovella Patterson
Total Area 0.11 A^c
P.R.O. 0.04 A^c
T.B.A. 0.07 A^c

PRAIRIE TOWNSHIP SEC. 10 T. 13 R. 13

Raymond J. & Lovella Patterson
Total Area 4.09 A^c
P.R.O. 2.13 A^c
T.B.A. 1.36 A^c

Channel Change 0.15 A^c
 $P.I. 41+92.06$
 $\Delta = 8^{\circ}06'$
 $D = 1^{\circ}30' Lt.$
 $T = 270.43'$
 $L = 540.0'$
 $R = 3819.72'$



$\theta_s = 12^{\circ}09'$
 $L_s = 270.0'$
 $P = 4.76'$
 $X_c = 268.79'$
 $Y_c = 19.02'$
 $T_s = 351.47'$

$P.I. 33+06.54$
 $\Delta = 37^{\circ}02' Rt.$
 $\Delta c = 11^{\circ}23' Rt.$
 $D = 9^{\circ}00'$
 $L_c = 126.48'$
 $R = 636.62'$

$\theta_s = 13^{\circ}30'$
 $L_s = 300.0'$
 $P = 5.88'$
 $X_c = 298.34'$
 $Y_c = 23.47'$
 $T_s = 344.86'$

STA. 39+50 - END
RIGHT OF WAY PROJECT