

Prairie
13-13-10, 11, 14

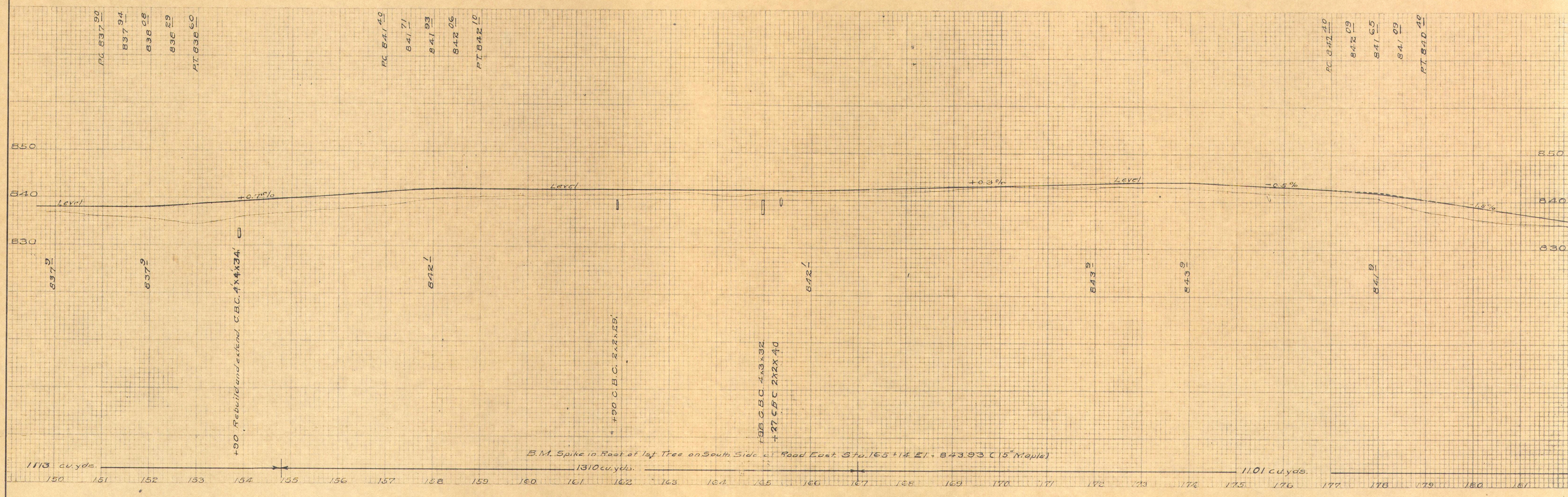
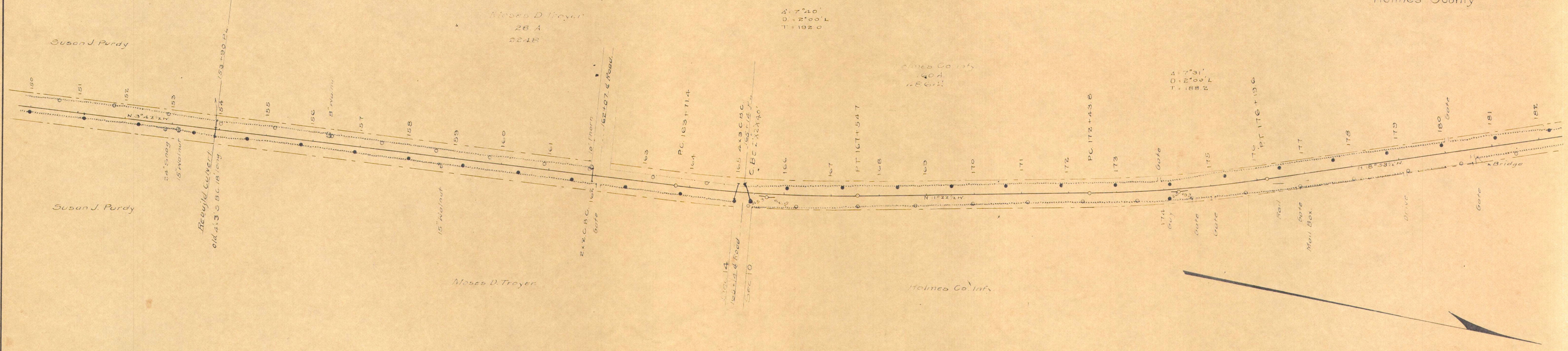
Disclaimer: Map and parcel data are
This is not a legal document and sho

HOL 83 MP 12.786 - 13.533



FED. ROAD DIST. NO.	STATE	FED. AID PROJ. NO.	FISCAL YEAR
	OHIO		

I.C.H. No. 342, Sec. B-1
Holmes County



FED. ROAD DIST. NO.	STATE	FED. AID PROJ. NO.	FISCAL YEAR
	OHIO		

9
22

IGH No 342 Sec. B-1
Holmes County

