

HOLMES COUNTY HARDY TOWNSHIP LOTS 17 & 22, 1ST QUARTER TOWN 9 N, RANGE 7 W

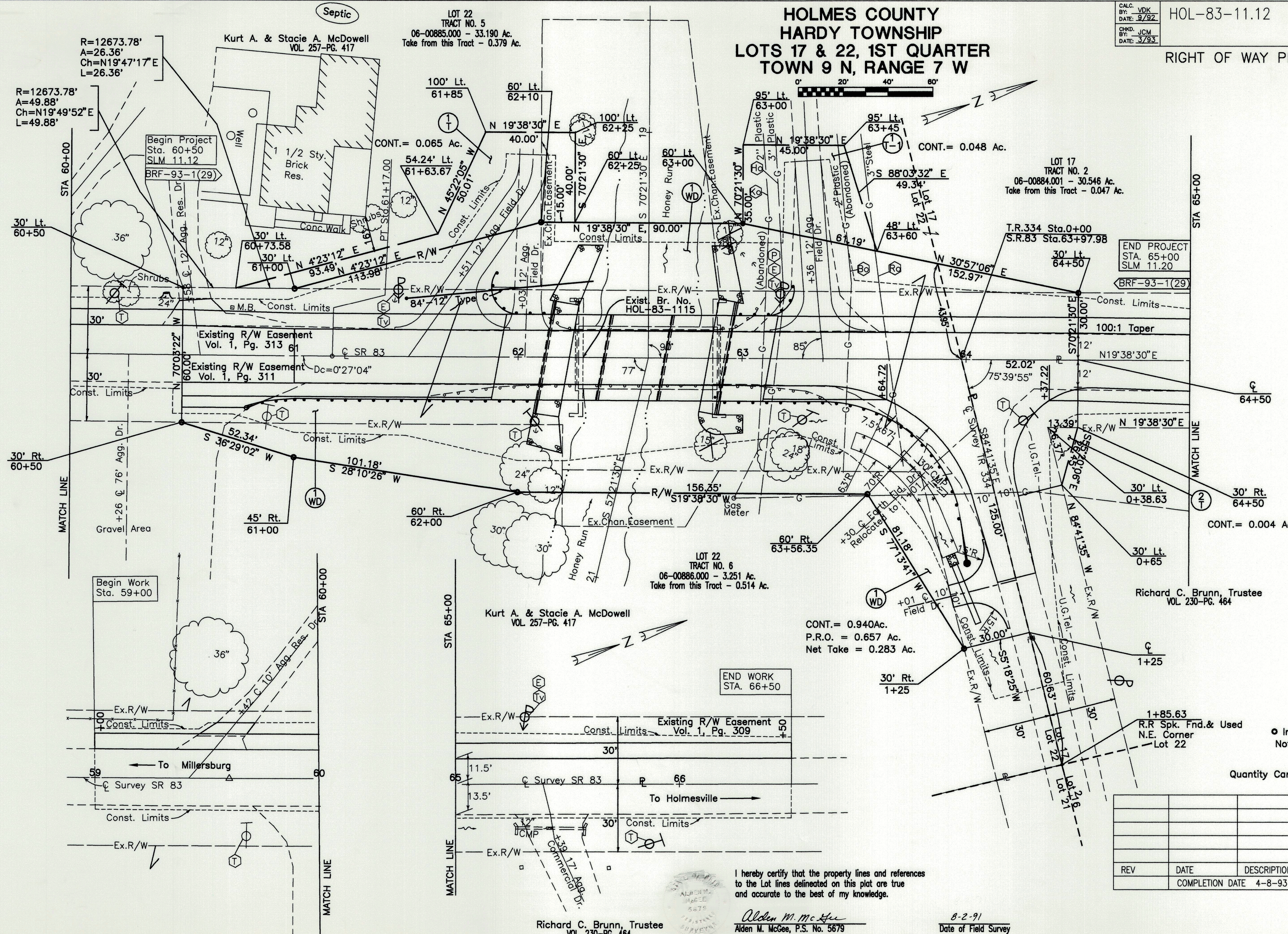
CALC. BY: VDK
DATE: 9/92
CHKD. BY: JCM
DATE: 3/93

HOL-83-11.12

OHIO 44
FHWA REGION 5 44

RIGHT OF WAY PLAN

4
4



R=12673.78'
A=26.36'
Ch=N19°47'17"E
L=26.36'

R=12673.78'
A=49.88'
Ch=N19°49'52"E
L=49.88'

LOT 22
TRACT NO. 5
06-00885.000 - 33.190 Ac.
Take from this Tract - 0.379 Ac.

LOT 17
TRACT NO. 2
06-00884.001 - 30.546 Ac.
Take from this Tract - 0.047 Ac.

LOT 22
TRACT NO. 6
06-00886.000 - 3.251 Ac.
Take from this Tract - 0.514 Ac.

Kurt A. & Stacie A. McDowell
VOL 257-PG. 417

CONT. = 0.940 Ac.
P.R.O. = 0.657 Ac.
Net Take = 0.283 Ac.

Richard C. Brunn, Trustee
VOL 230-PG. 464

Begin Project
Sta. 60+50
SLM 11.12
BRF-93-1(29)

Begin Work
Sta. 59+00

END WORK
Sta. 66+50

END PROJECT
Sta. 65+00
SLM 11.20
BRF-93-1(29)

Iron Pin Set
Note: Iron Pins Set This Sheet 10.

Quantity Carried To General Summary

REV	DATE	DESCRIPTION

I hereby certify that the property lines and references to the Lot lines delineated on this plat are true and accurate to the best of my knowledge.

Alden M. McGee
Alden M. McGee, P.S. No. 5679

8-2-91
Date of Field Survey

Richard C. Brunn, Trustee
VOL 230-PG. 464

4
4