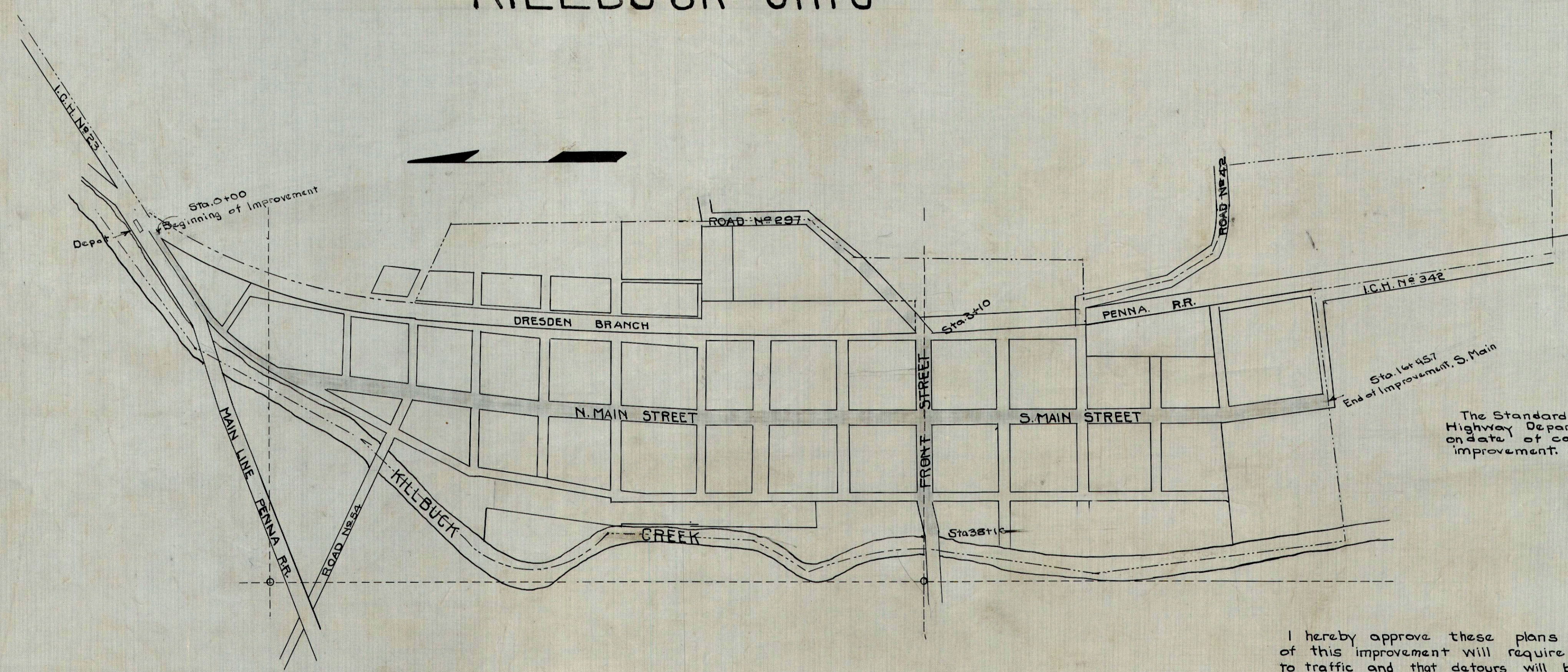


HOLMES COUNTY OHIO  
KILLBUCK VILLAGE IMPROVEMENT  
COUNTY IMPROVEMENT BY RESOLUTION UNDER SEC. 6949 G.C.  
KILLBUCK OHIO

INDEX	
Title Page	p. 1
Typical Cross-Section	p. 2
Plans & Profile, N. Main	p. 3-5
S. Main St.	p. 5-6
E. & W. Front	p. 7
Cross Section, N. Main	p. 8-10
S. Main	p. 10-11
E. & W. Front	p. 11
Summary Sheet	p. 12.



The Standard Specifications of the State Highway Department of Ohio in force on date of contract will govern this improvement.

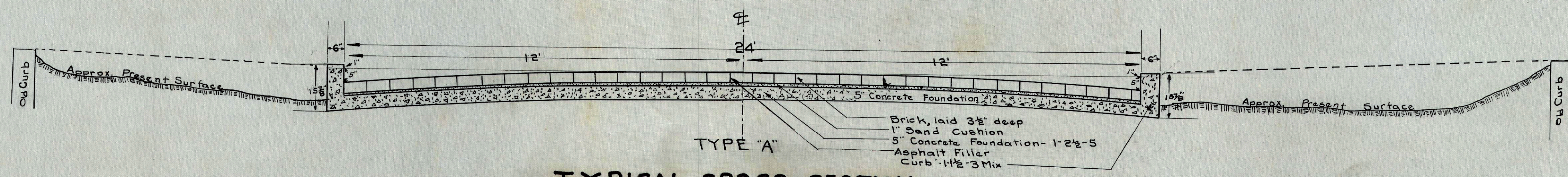
I hereby approve these plans and declare that the making of this improvement will require the closing of the streets to traffic and that detours will be provided as shown on plans.

Approved: \_\_\_\_\_  
Date: \_\_\_\_\_ County Surveyor.

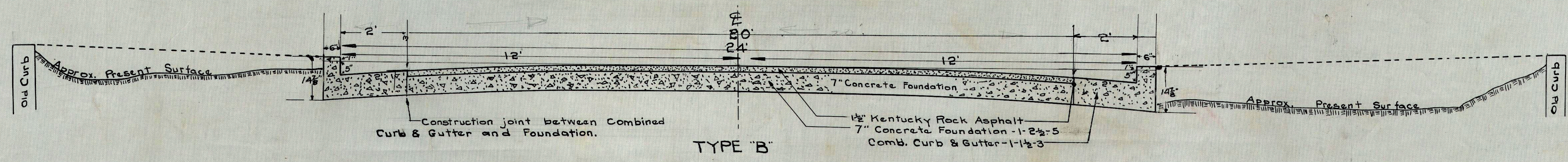
We, the Commissioners of Holmes County hereby approve these plans and certify that the right-of-way is available for the construction of the above streets.

Signed: \_\_\_\_\_  
Date: \_\_\_\_\_ County Commissioners

LOCATION PLAN  
PORTION TO BE IMPROVED   
DETOUR   
Scale 1"=300'

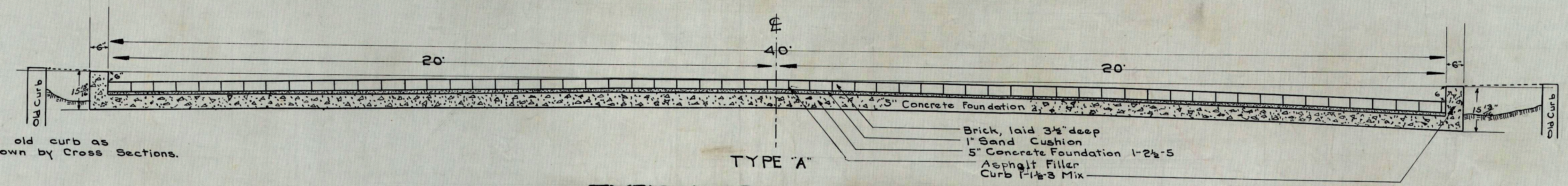
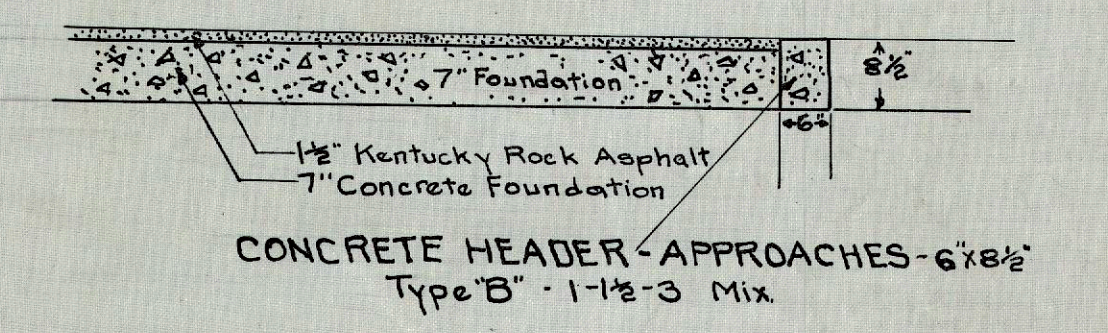


**TYPICAL CROSS SECTION  
 BRICK**  
 4494.4'-24' PAVEMENT  
 Sta. 0+00 to Sta. 30+36.3 - N. Main Street; Sta. 3+30.3  
 to Sta. 16+57.7 - S. Main Street; Sta. 1+79.3 to Sta. 3+10.  
 E. Front Street.



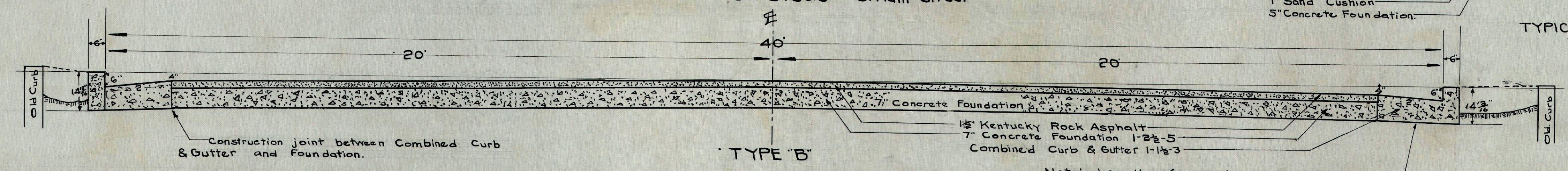
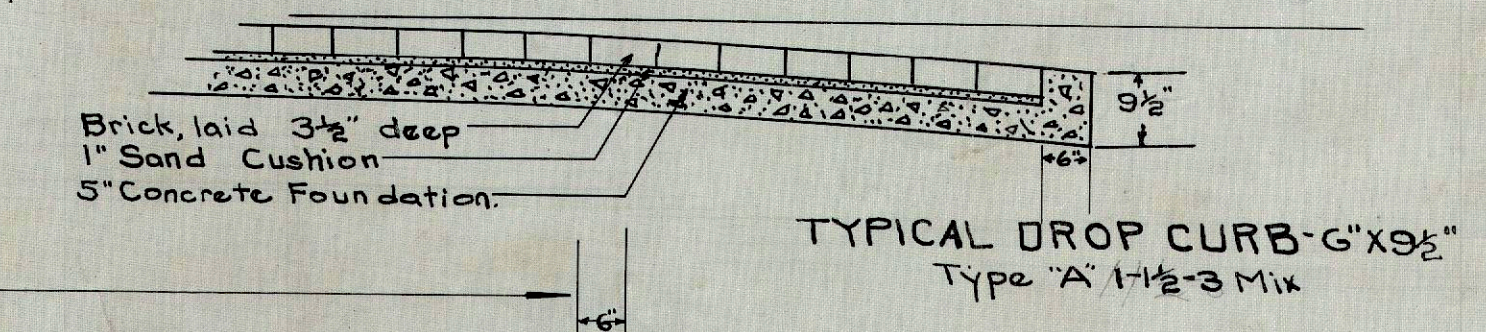
**TYPICAL CROSS SECTION  
 KENTUCKY ROCK ASPHALT**  
 4494.4'-24' PAVEMENT  
 Sta. 0+00 to Sta. 30+36.3 - N. Main Street; Sta. 3+30.3  
 to Sta. 16+57.7 - S. Main Street; Sta. 1+79.3 to Sta. 3+10.  
 E. Front Street.

Note: Fill to old curb as shown by Cross Sections



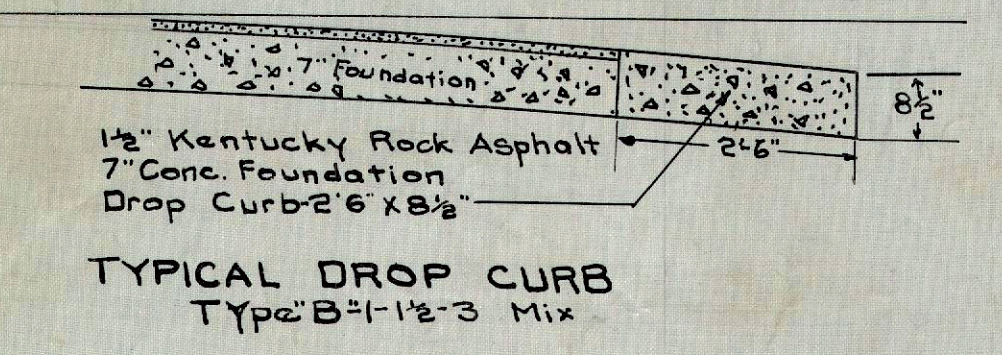
**TYPICAL CROSS SECTION  
 BRICK**  
 1117.1'-40' PAVEMENT  
 Sta. 30+36.3 - N. Main and W. Front - to 36+83.8.  
 Sta. 0+00 to Sta. 1+79.3 - E. Front Street;  
 Sta. 0+00 to Sta. 3+30.3 - S. Main Street

Note: Fill to old curb as shown by Cross Sections.



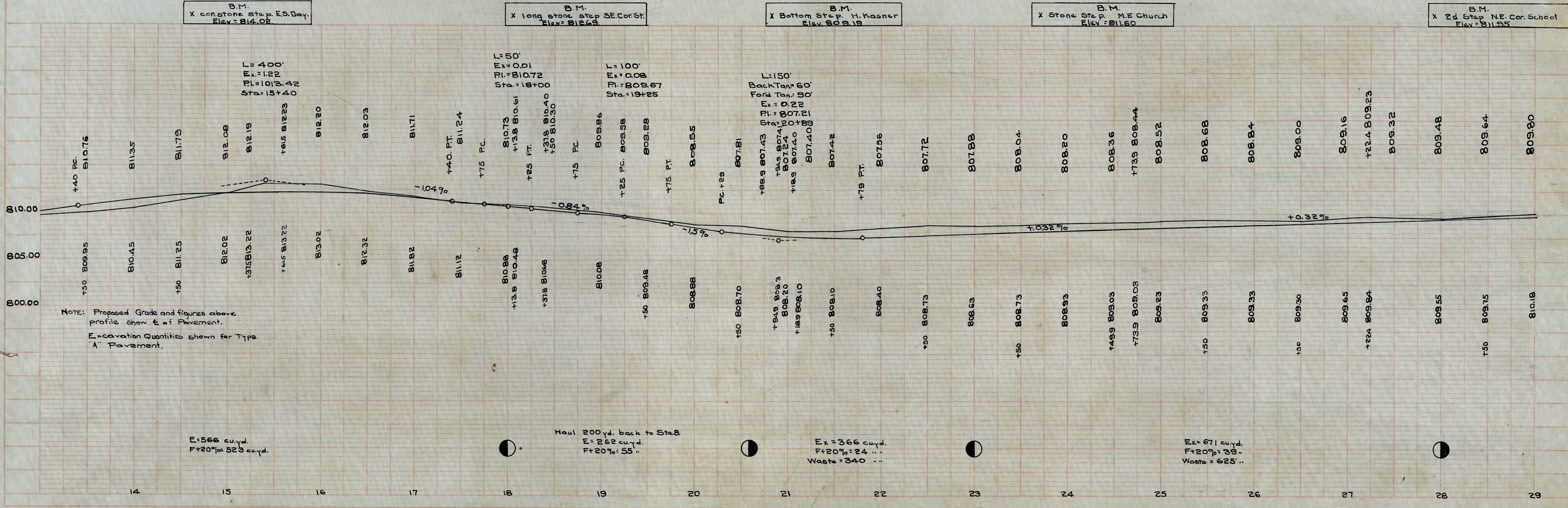
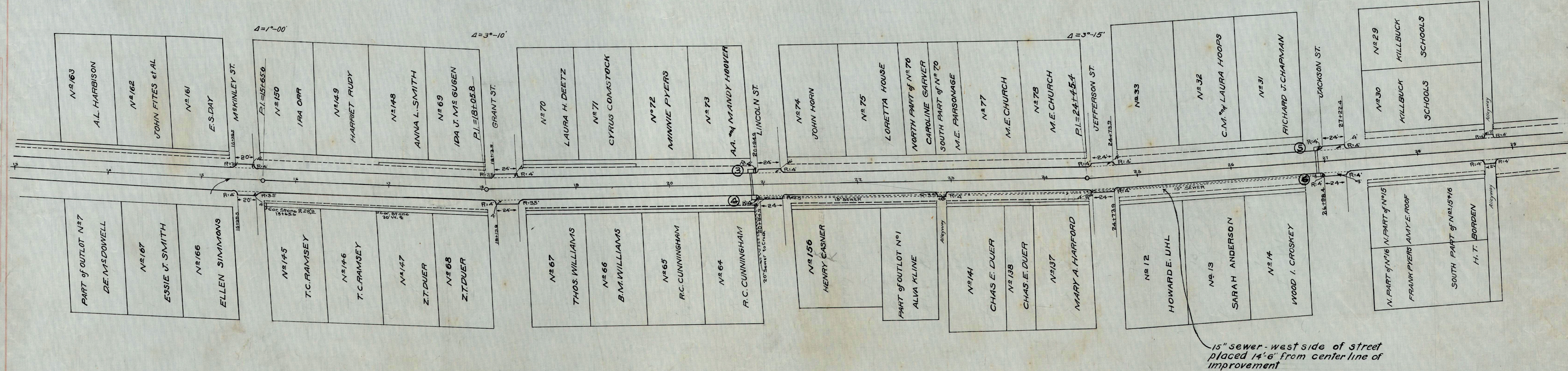
**TYPICAL CROSS SECTION  
 KENTUCKY ROCK ASPHALT**  
 1117.1'-40' PAVEMENT  
 Sta. 30+36.3 - N. Main and W. Front - to 36+83.8  
 Sta. 0+00 to Sta. 1+79.3 - E. Front Street;  
 Sta. 0+00 to Sta. 3+30.3 - S. Main Street.

Note: Length of curved curb calculated with a circumference passing thru this point so that Length x Area = True Volume.



PLAN  
SUBMITTED BY  
DATE  
NOTE BOOK NO.  
ALLOTTMENT CHECKED BY  
ST. OF ANY CHECKED NO.

PROFILE  
SUBMITTED BY  
DATE  
NOTE BOOK NO.  
ALLOTTMENT CHECKED BY  
ST. OF ANY CHECKED NO.



15" sewer - west side of street placed 14'-6" from center line of improvement

B.M.  
X con stone step E.S. Day  
Elev = 814.02

B.M.  
X long stone step SE. Cor. St.  
Elev = 812.69

B.M.  
X Bottom Step H. Kasner  
Elev = 809.19

B.M.  
X Stone Step M.E. Church  
Elev = 811.60

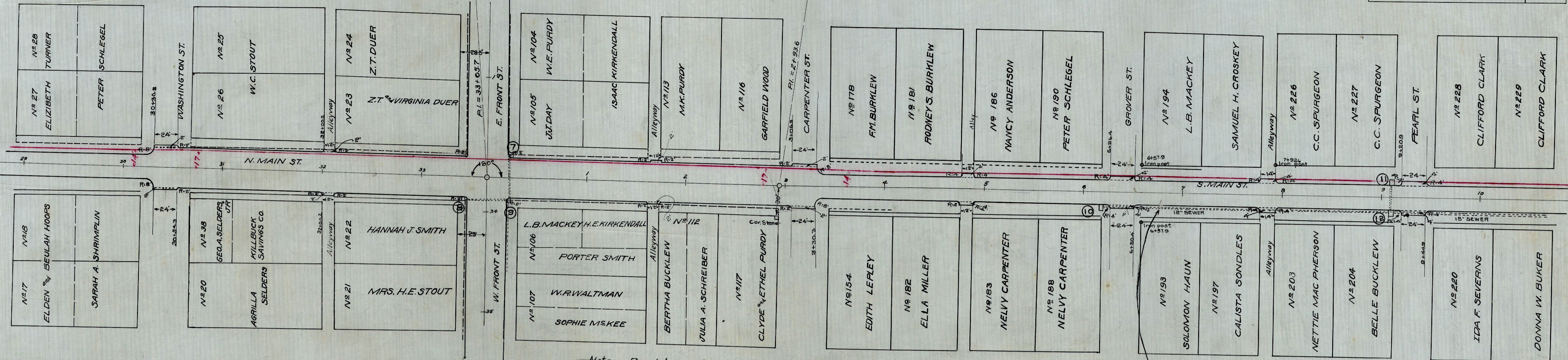
B.M.  
X 2d Step NE. Cor. School  
Elev = 811.95

E = 566 cu. yd.  
F + 20% = 523 cu. yd.

Haul 200 yd. back to Sta. 8  
E = 262 cu. yd.  
F + 20% = 55 "

E = 366 cu. yd.  
F + 20% = 24 ...  
Waste = 340 ...

E = 671 cu. yd.  
F + 20% = 39 ...  
Waste = 625 ...



Note: Red line denotes gas line - placed 17' from center line of improvement under 40 foot pavement and 14' from center line under 24' pavement

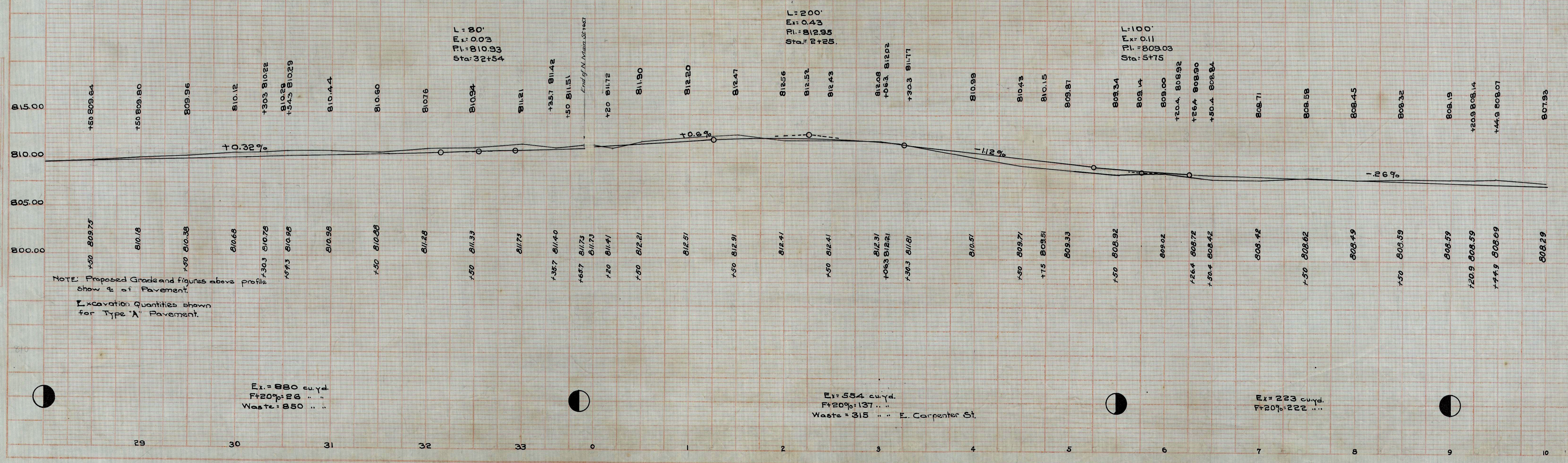
12" sewer - west side of street placed 14'-6" from center line of improvement

B.M.  
 X Bottom Step Lot 38  
 Elev. 811.62

B.M.  
 X Stone Step Store Lot 105  
 Elev. 812.59

B.M.  
 □ Bottom Step Lot 190  
 Elev. 809.68

B.M.  
 □ Bot. Conc. Step Lot 204  
 Elev. 809.39



NOTE: Proposed Grade and figures above profile show ± of Pavement.  
 Excavation Quantities shown for Type 'A' Pavement.

Ex. = 880 cu. yd.  
 Ft 20% = 228  
 Waste = 850

Ex. = 554 cu. yd.  
 Ft 20% = 137  
 Waste = 315 ... E. Carpenter St.

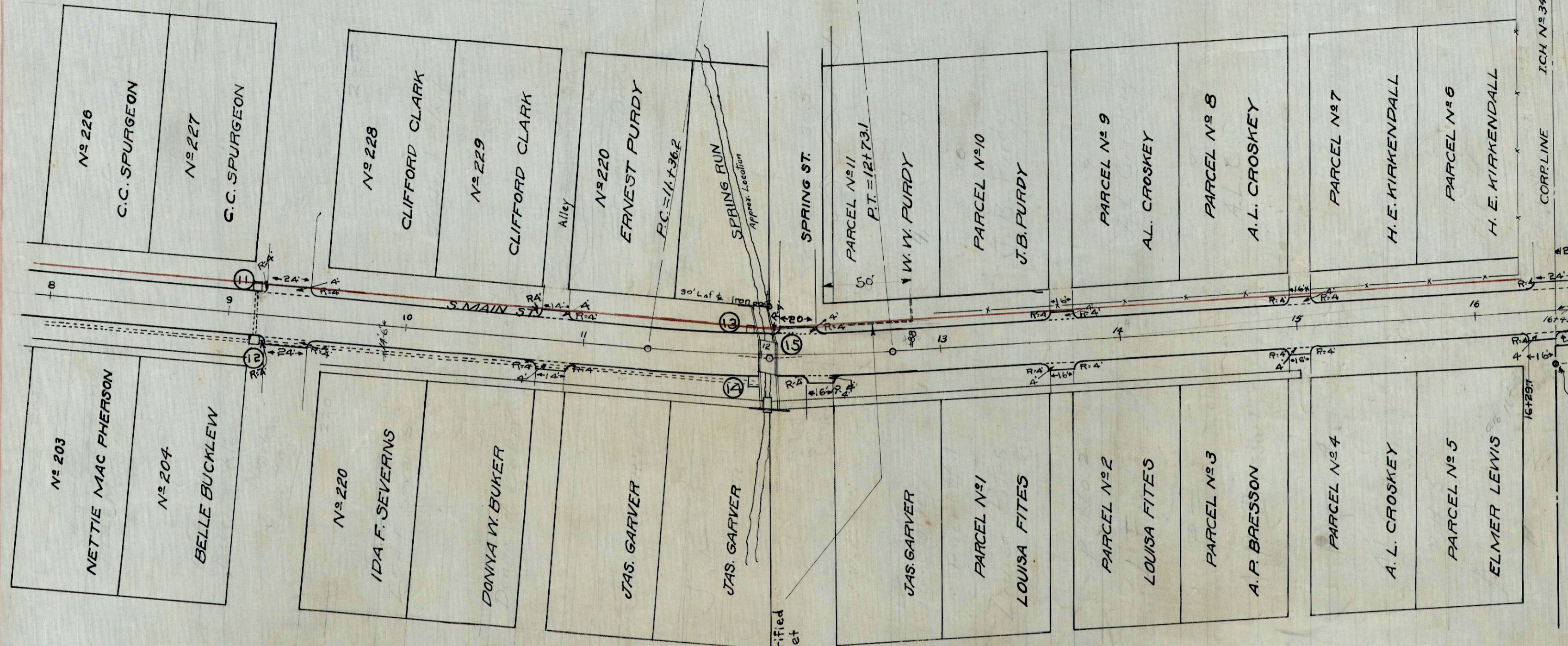
Ex. = 223 cu. yd.  
 Ft 20% = 222

PLAN  
 DATE  
 DRAWN BY  
 CHECKED BY  
 NOTE BOOK AUTHORITY CHECKED  
 REF. OF PLAN CHECKED

PROFILE  
 DATE  
 DRAWN BY  
 CHECKED BY  
 NOTE BOOK AUTHORITY CHECKED  
 REF. OF PLAN CHECKED

Note: P.I. located @ Main and North line Spring Street.

A=9°-13' L  
 D=6  
 EX=2.5  
 T=68.6  
 L=136.9

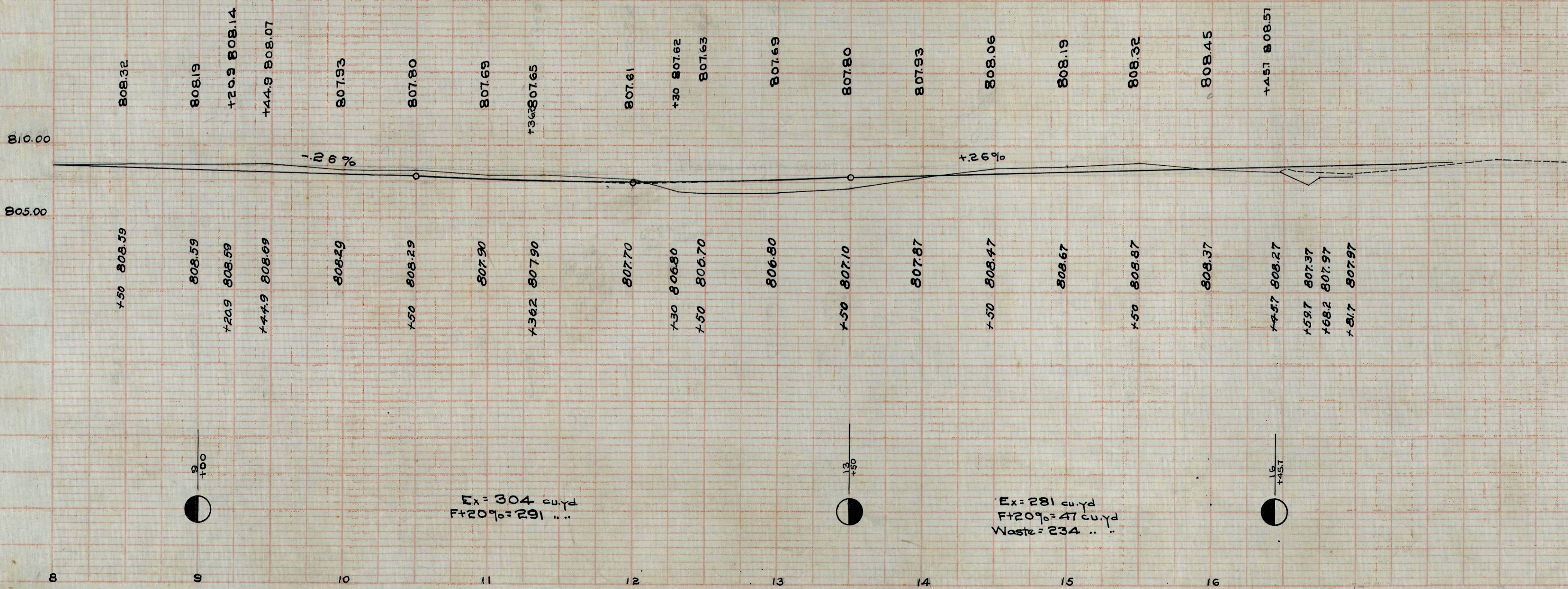


Let 94'-4" Vitrified Drain Tile outlet to Bridge

Note: Red line denotes gas line placed 14' from center line of improvement

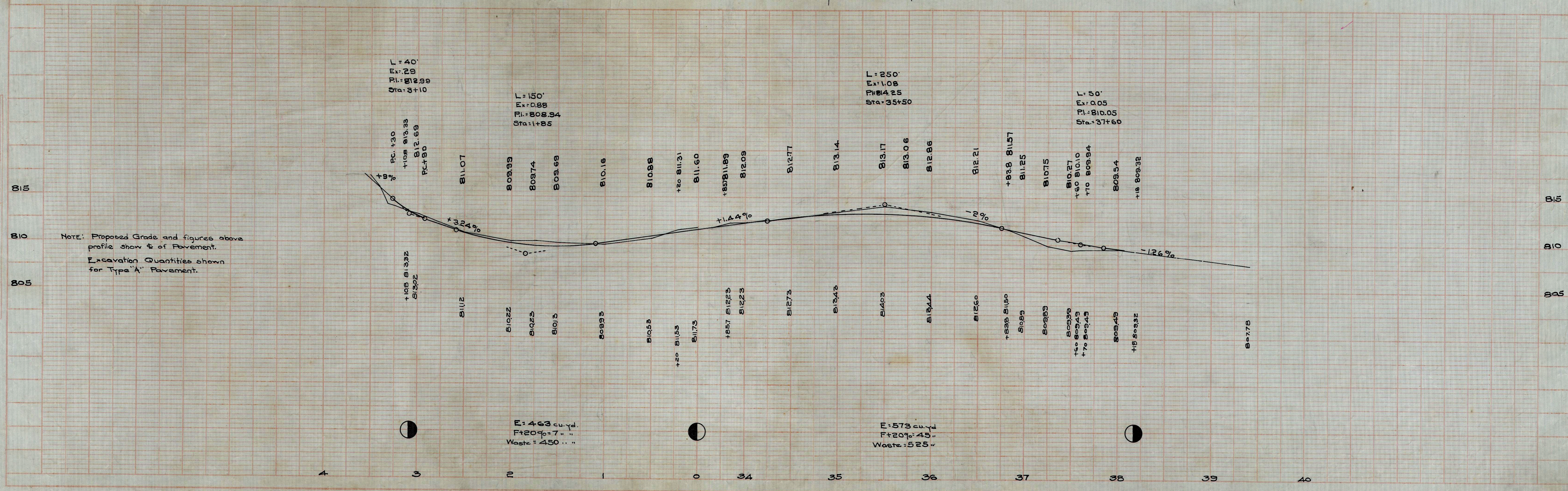
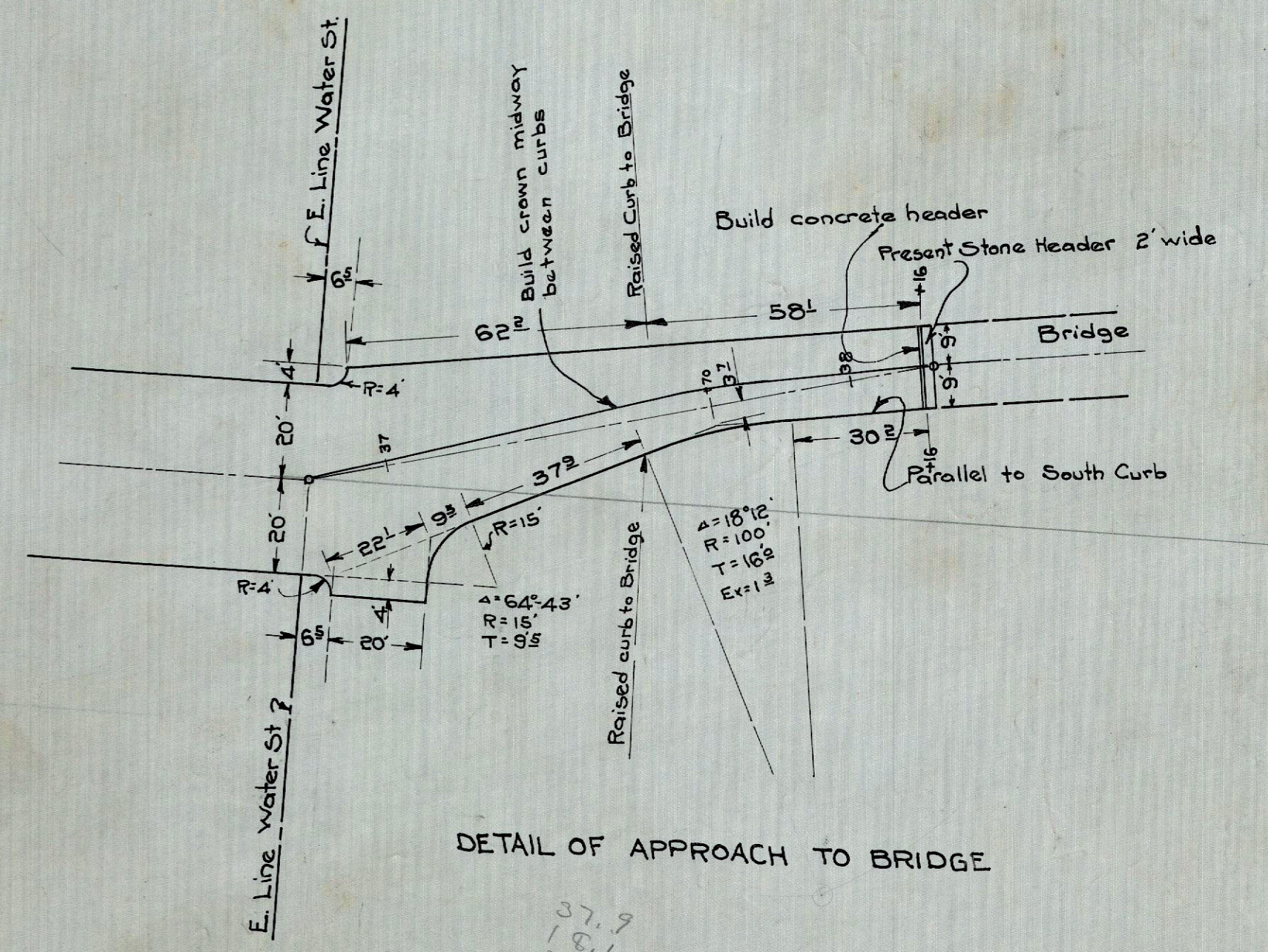
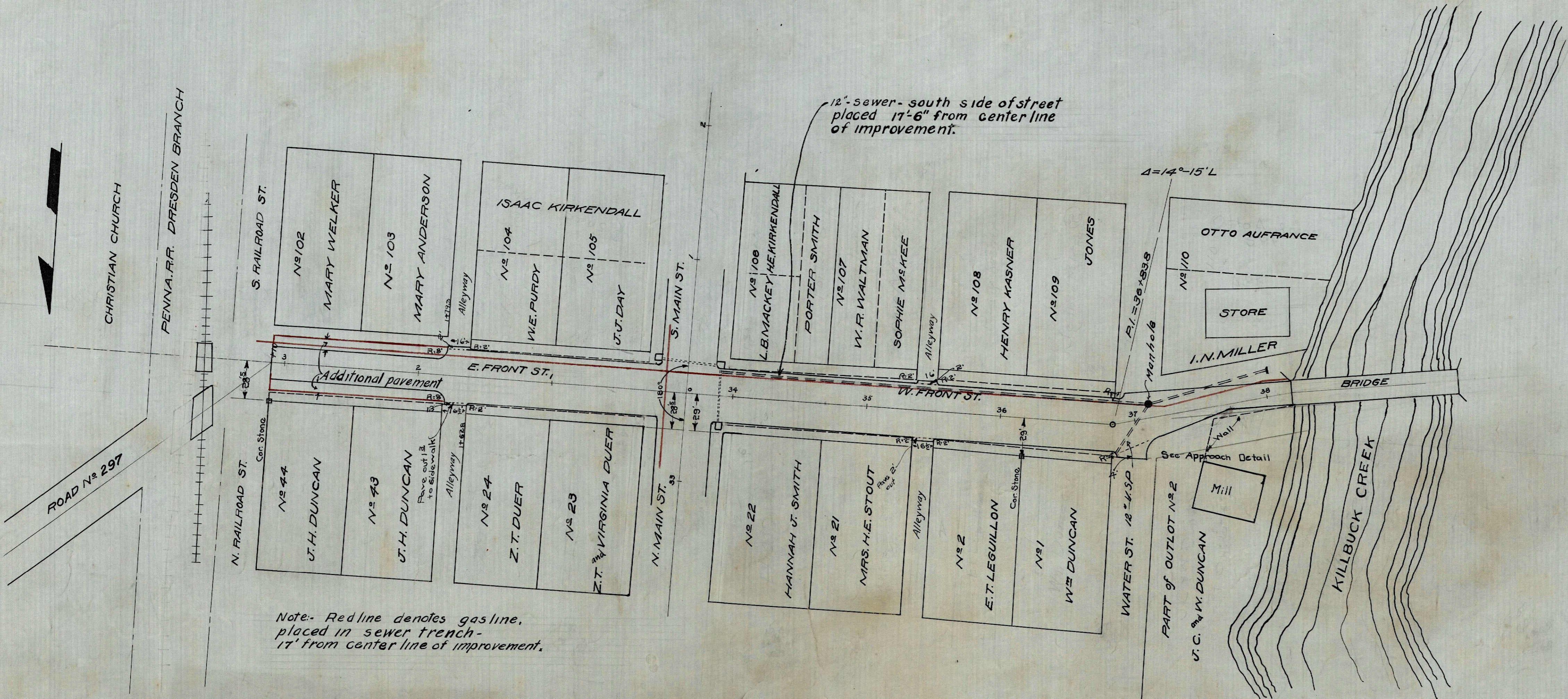
Proposed Grade and figures above profile show  $\pm$  of pavement.  
 Excavation Quantities shown for Type "A" Pavement:

L: 300'  
 Ex: 0.20  
 P.I.: 807.41  
 Sta: 12+00



Ex = 304 cu yd  
 F+20% = 291

Ex = 281 cu yd  
 F+20% = 27 cu yd  
 Waste = 234



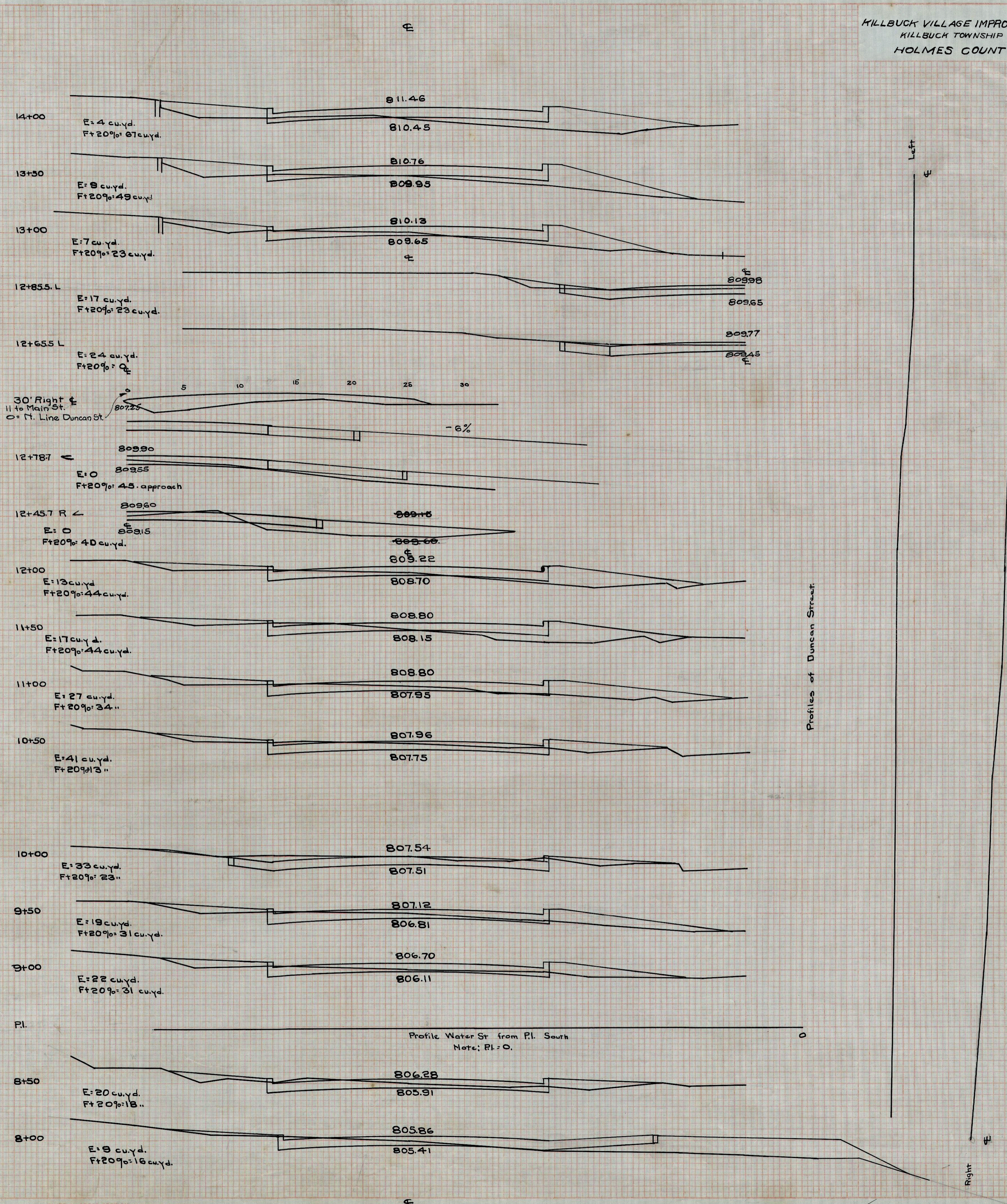
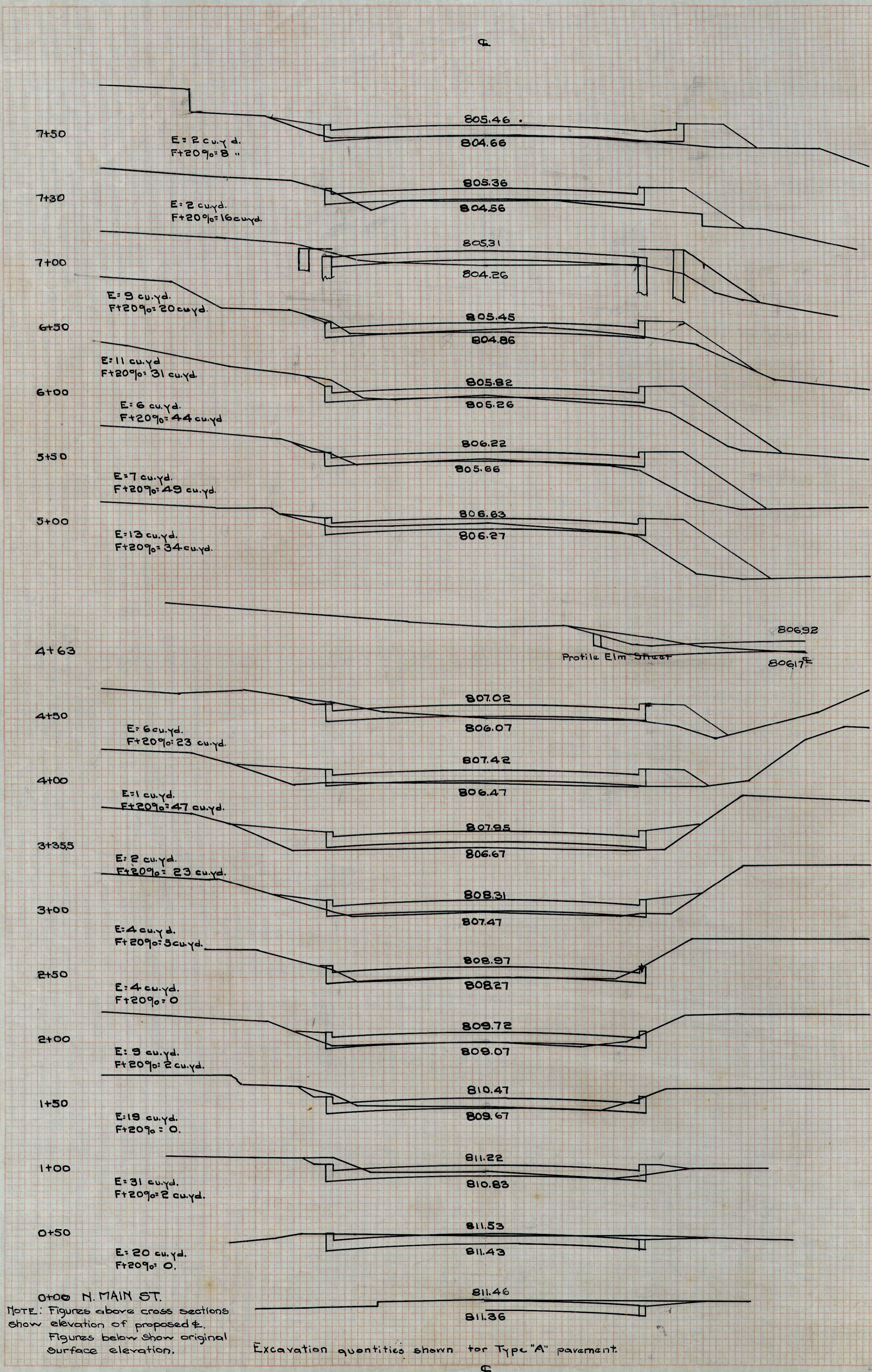
PLAN  
SUBMITTED TO  
COUNTY ENGINEER  
FOR RECORD  
DATE

PROFILE  
SCALE  
VERTICAL  
HORIZONTAL

Main Front Street  
Hillbuck O

DATE: \_\_\_\_\_  
FINAL SURVEY: \_\_\_\_\_  
NOTE BOOK: \_\_\_\_\_  
NO. \_\_\_\_\_

DATE: \_\_\_\_\_  
ORIGINAL SURVEY: \_\_\_\_\_  
NOTE BOOK: \_\_\_\_\_  
NO. \_\_\_\_\_



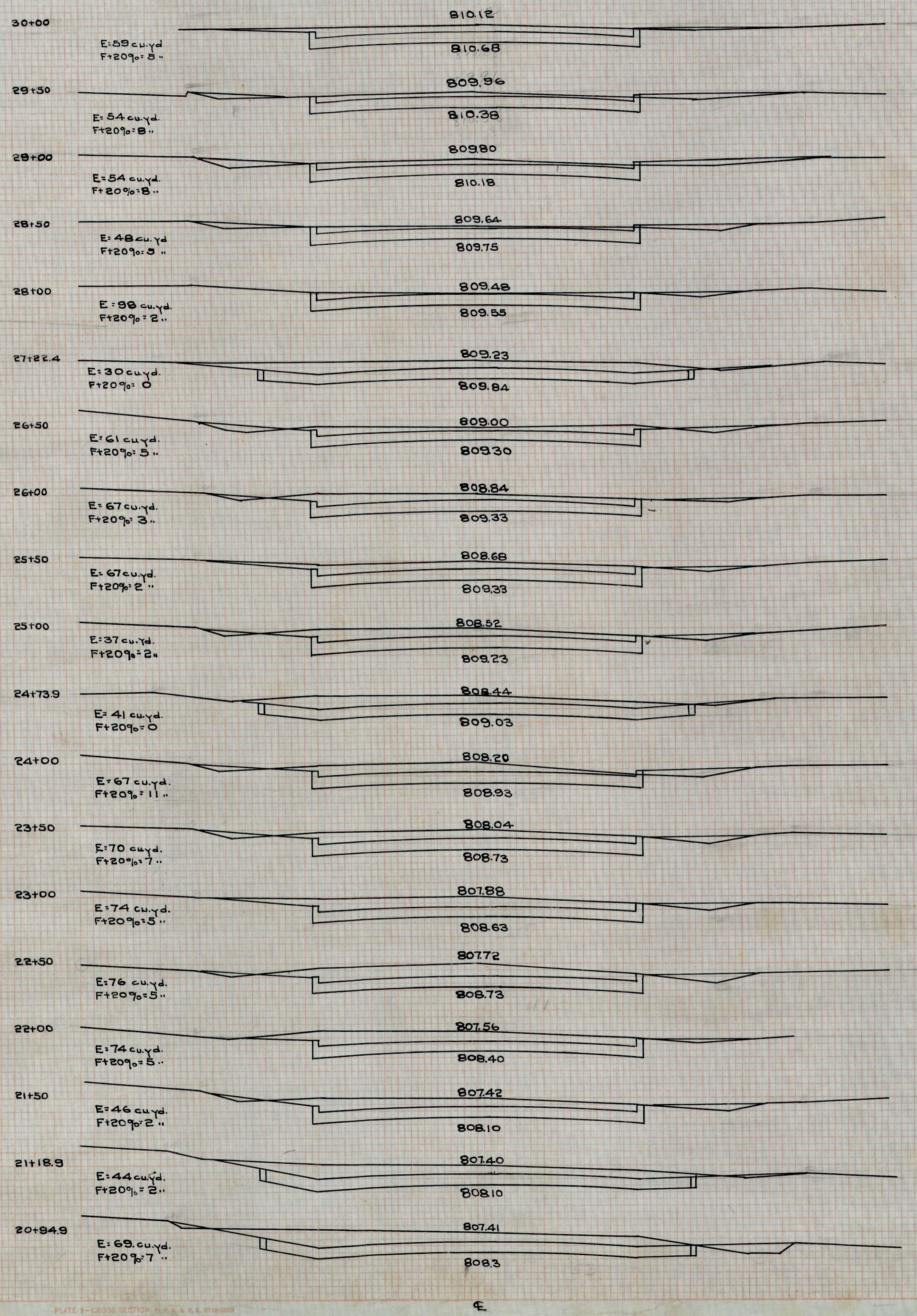
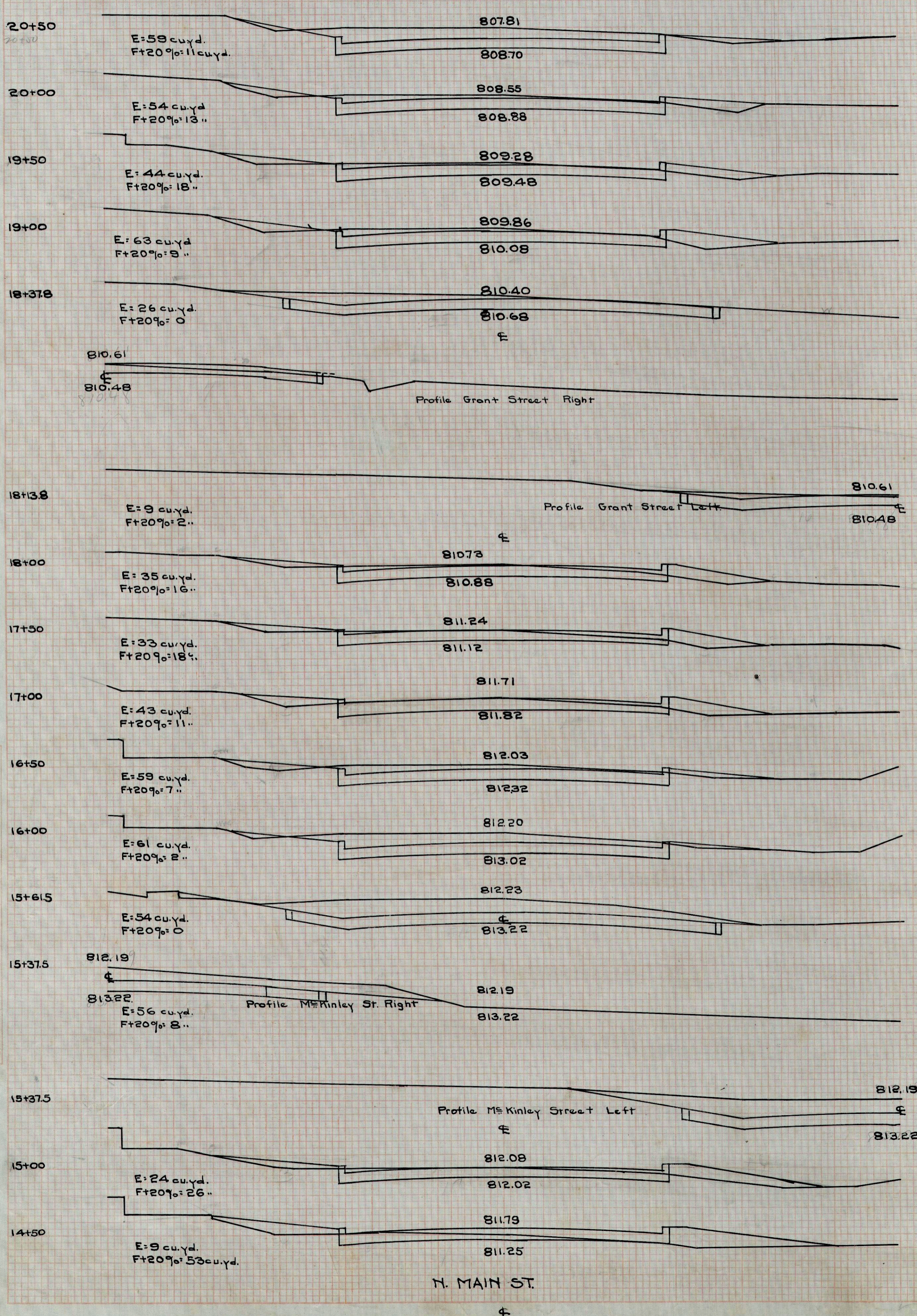
NOTE: Figures above cross sections show elevation of proposed F. Figures below show original surface elevation.

Excavation quantities shown for Type "A" pavement.

NOTE: Figures above cross sections show elevation of proposed  $\pm$ .  
 Figures below show elevation of original surface.  
 Excavation Quantities shown for Type "A" pavement.

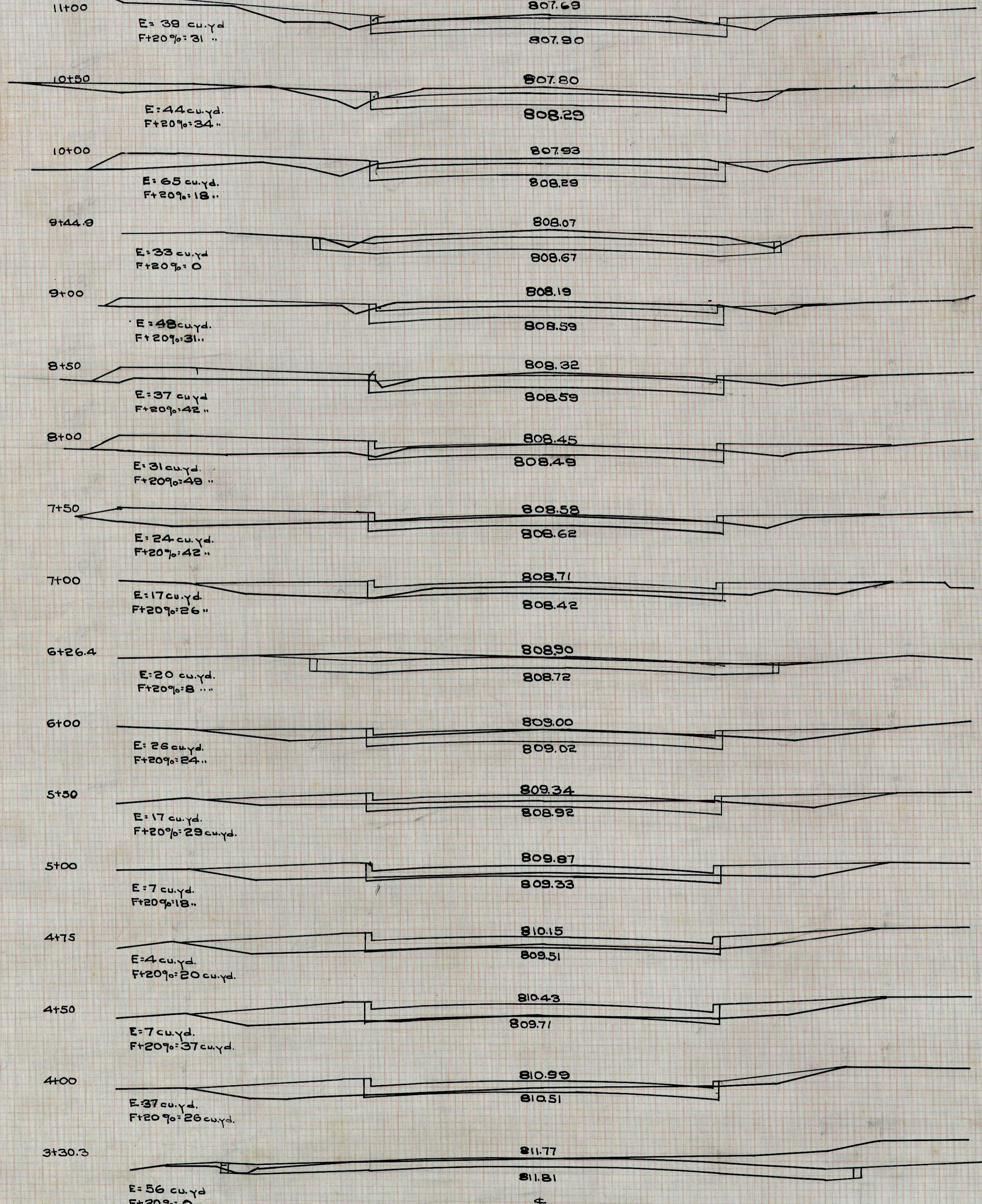
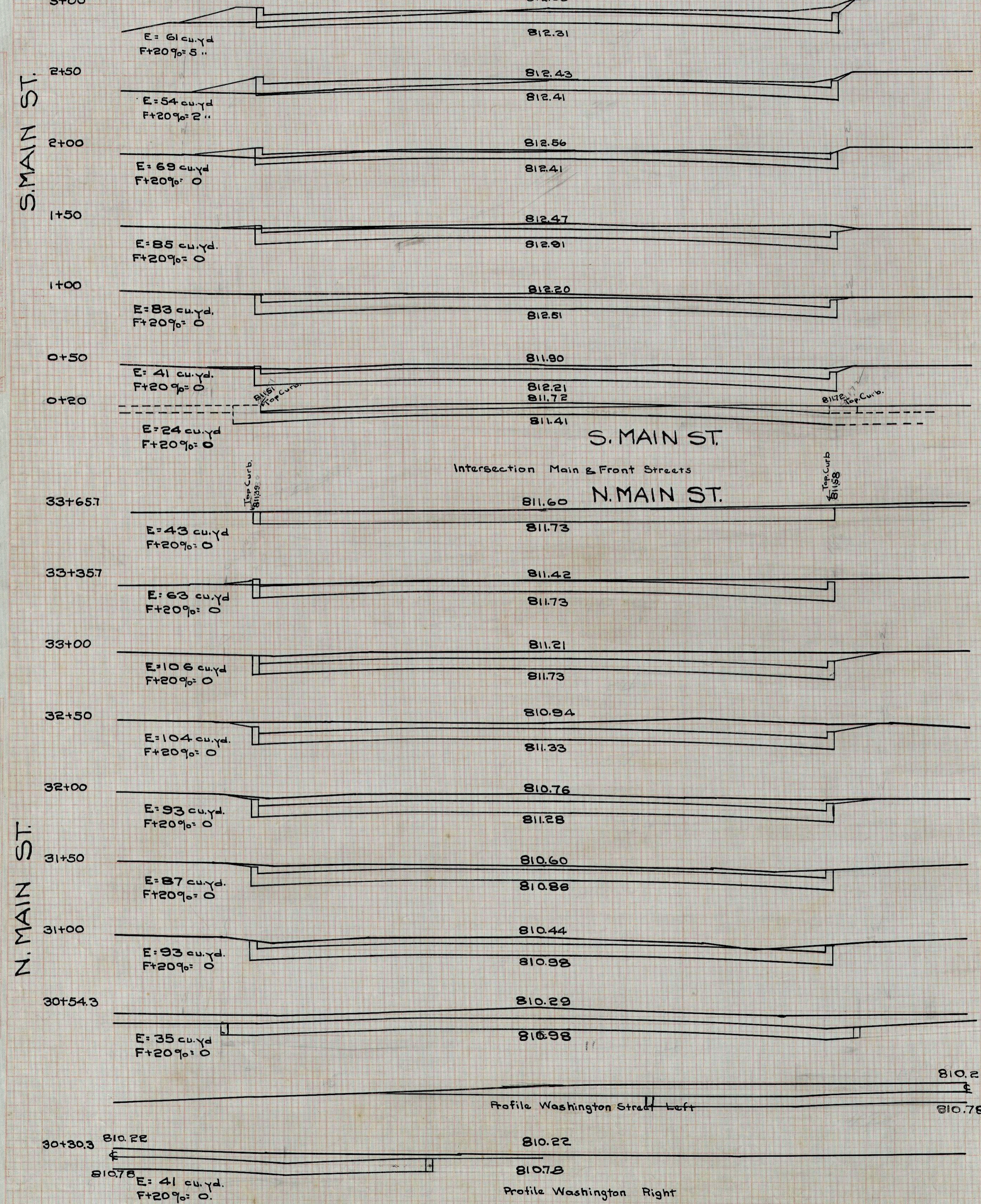
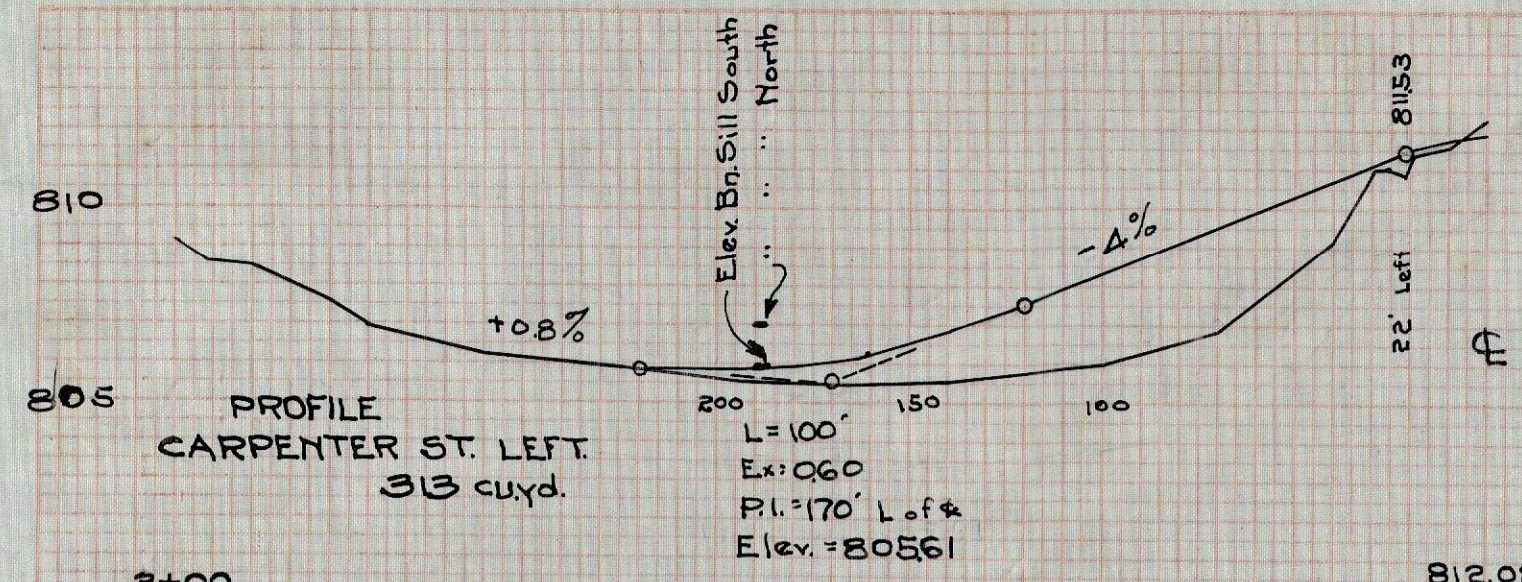
FINAL SURVEY  
 DATE: \_\_\_\_\_  
 BY: \_\_\_\_\_  
 CHECKED: \_\_\_\_\_  
 DATE: \_\_\_\_\_  
 BY: \_\_\_\_\_

ORIGINAL SURVEY  
 DATE: \_\_\_\_\_  
 BY: \_\_\_\_\_  
 CHECKED: \_\_\_\_\_  
 DATE: \_\_\_\_\_  
 BY: \_\_\_\_\_



N. MAIN ST.





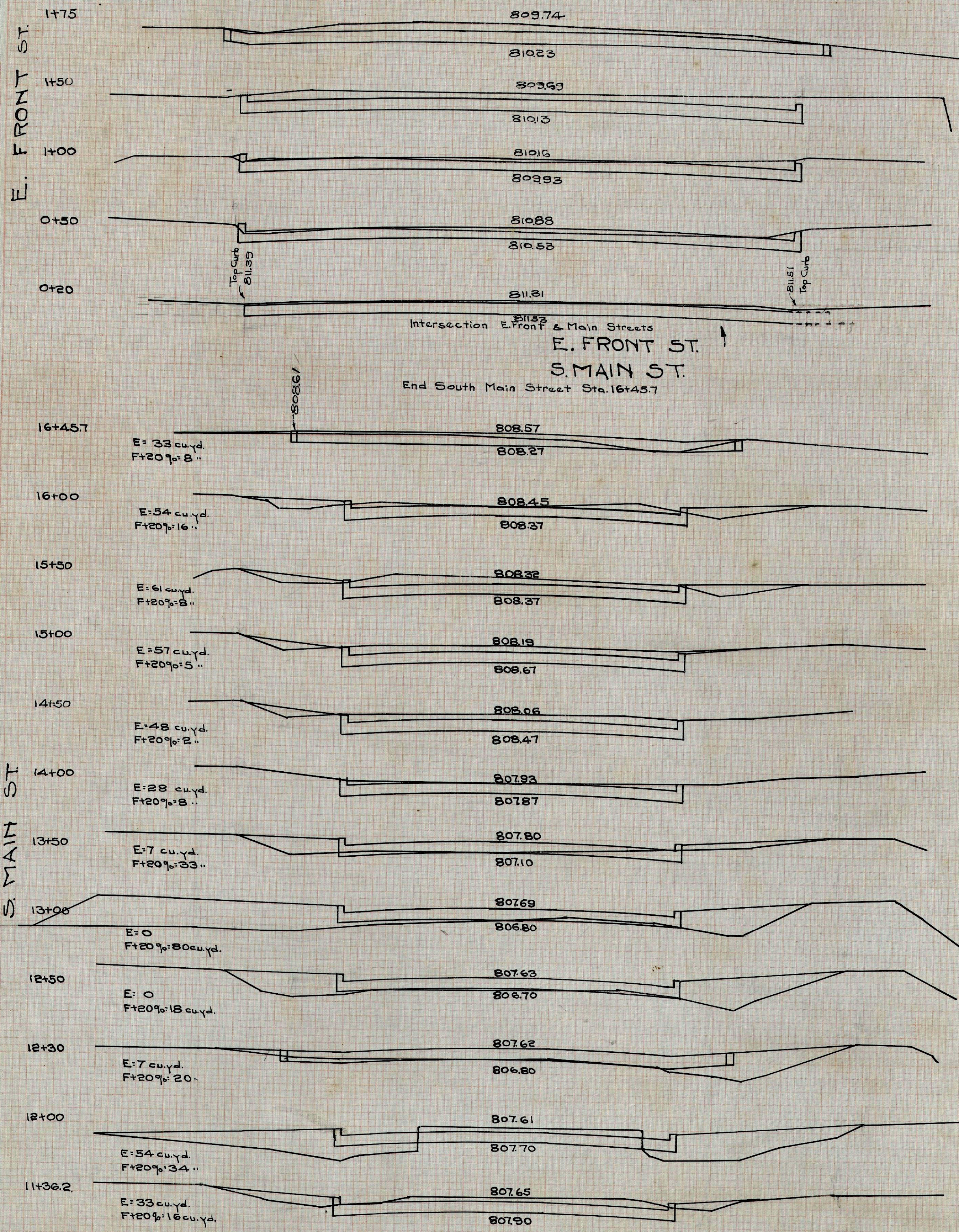
Note: Figures above cross-sections show elevation of proposed  $\pm$ .  
Figures below show original surface elevation.  
Excavation quantities shown for Type "A" pavement.

DATE: \_\_\_\_\_  
BY: \_\_\_\_\_  
CHECKED: \_\_\_\_\_  
APPROVED: \_\_\_\_\_

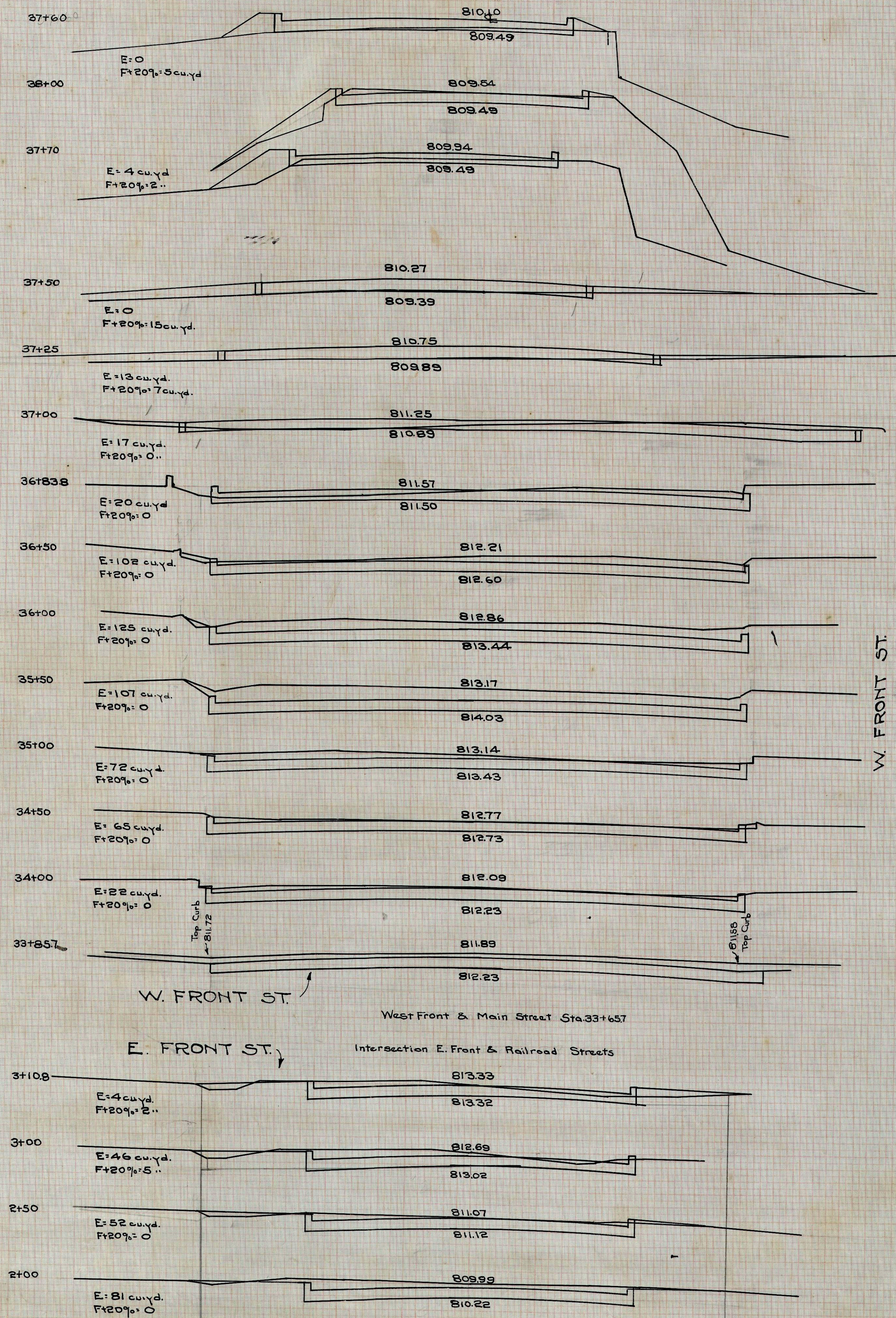
NOTE: Figures above cross sections show elevation of proposed  $\pm$ .  
 Figures below show elevations of original surface.  
 Excavation Quantities shown for Type 'A' Pavement.

E. FRONT ST.

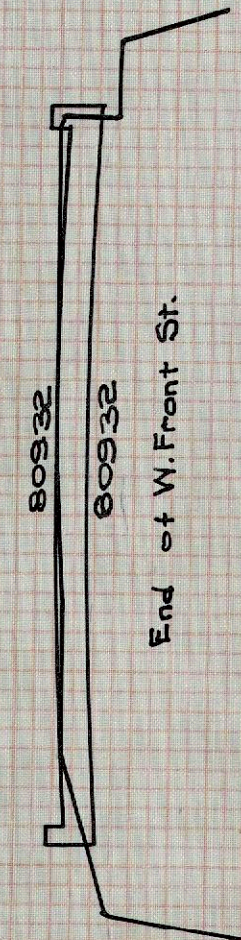
S. MAIN ST.



W. FRONT ST.



W. FRONT ST.



Profile Railroad Street from E. Front St.

1+75 Alley E. Front St.

37+00 Water St.

DATE: 10/10/10  
 DRAWN BY: [Signature]  
 CHECKED BY: [Signature]  
 PROJECT NO.: 10-00000000

DATE: 10/10/10  
 DRAWN BY: [Signature]  
 CHECKED BY: [Signature]  
 PROJECT NO.: 10-00000000

20460

# SUMMARY OF QUANTITIES

NUMBER	STATION	TYPE	SIZE	Excavation Back Fill Cu.Yd.	Channel Excav. Cu.Yd.	CONCRETE			REINF. STEEL LBS.	CONCRETE COVERS Size	EXPAN. JOINT Sq.Ft.	Conc. Rail Type "G" LIN.FT.	VITRIFIED SEWER PIPE						REMARKS	
						1-2-4 Cu.Yd.	1-2 1/2-3 Cu.Yd.	1-3-6 Cu.Yd.					12"	12"	15"	15"	20"	20"		
<b>CATCH BASINS</b>																				
1&2	7+00	C. Basin	4'x24'x4' 4'x24'x4.5'	16	3	2.7			4'x22"x9" 38"x31"				8'	26'					Outlet to Killbuck Cree k.	
3	20+88.5	"	4'x54'x48"	22		1.9			48"x31"							26'			Outlet to Creek -20" Sewer	
4	"	"	4'27'x48'x6"	10		2.4			"										Outlet to Creek -20" Sewer	
4A	27	"	4'27'x48'x6"	623	7	0.6								580'	56'	462'			Outlet to # 6	
5	27+284	"	4'x54'x48"		7	1.9			"										Outlet - Sewer, Catch Basin #4	
6	"	"	54'x4'x48"		16	2.0			"					26'					Outlet - No. 9	
7	0+24	"	54'x4'x48"		21	1.9			"					42'					Outlet to Creek, curved Cover	
8	33+89.7	"	"		21	1.9			"					42'					Outlet to Creek, curved Cover	
9	33+88.4	"	54'x38'x6"		8	1.9			"										Outlet to Spring Run	
9A	Main Front	"		225		0.2			"				125'	293'					"	
10	6+20.4	"	4'x54'x35"		50	1.4			"				255'	37'					"	
11	9+14.9	"	4'x54'x43"		16	1.8			"					26'					"	
12	9+14.9	"	4'x54'x43"		7	1.8			"										"	
13	11+91.8	"	4'x54'x32"		3	1.4			"					6'					"	
14	11+98.5	"	4'x64'x39"		69	1.5			"						244'				"	
Total of Quantities				1114	10	253							388	498	824	122	462			
<b>BRIDGES</b>																				
	12+055	Slab	Exten.	70	24	15.8	18.5	18.7	2482		12.5	41								
Total of Quantities				70	24	15.8	18.5	18.7	2482		12.5	41								

## ROADWAY

**TYPE "A"**

EXCAVATION ----- 5359 Cu.Yd.

REMOVAL CONCRETE, BRICK, & STONE WALKS ----- 293 Sq.Yd.

4" VITRIFIED DRAIN TILE ----- 94 Lin.Ft.

BRICK PAVING, LAID 3 1/2" DEEP, INCLUDING SAND CUSHION ----- 17,826 Sq.Yd.

CONCRETE BASE, 5" THICK, 1-2 1/2-5 MIX ----- 17,826 Sq.Yd.

BITUMINOUS FILLER ----- 17,826 Sq.Yd.

CONCRETE CURB 6"x15 7/8", 1-1 1/2-3 MIX ----- 9,825 LIN. FT.

CURVED CONCRETE CURB 6"x15 7/8", 1-1 1/2-3 MIX ----- 622 LIN. FT.

CONCRETE HEADERS, 6"x9 1/2", 1-1 1/2-3 MIX ----- 1,240 Lin.Ft.

## PAVEMENT

**TYPE "B"**

EXCAVATION ----- 4876 Cu.Yd.

REMOVAL CONCRETE, BRICK & STONE WALKS ----- 293 Sq.Yd.

VITRIFIED DRAIN TILE, 4" ----- 94 Lin.Ft.

KENTUCKY ROCK ASPHALT 1 1/2" DEEP ----- 15,398 Sq.Yd.

CONCRETE BASE, 7" THICK 1-2 1/2-5 MIX ----- 15,398 Sq.Yd.

COMBINED CURB & GUTTER, CONCRETE,  
1-1 1/2-3 MIX, 2'6"x8 1/2"; 6" RAISED CURB ----- 9,825 Lin. Ft.

CURVED COMBINED CURB & GUTTER  
CONCRETE, 1-1 1/2-3 MIX, 2'6"x8 1/2"; 6" RAISED CURB ----- 730 Lin. Ft.

DROP CURB & GUTTER, CONCRETE,  
1-1 1/2-3 MIX, 2'6"x8 1/2"; ----- 291 Lin. Ft.

CONCRETE HEADERS 1-1 1/2-3 MIX, 6"x8 1/2" ----- 745 Lin.Ft.