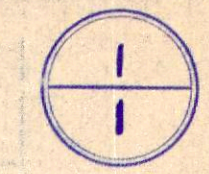
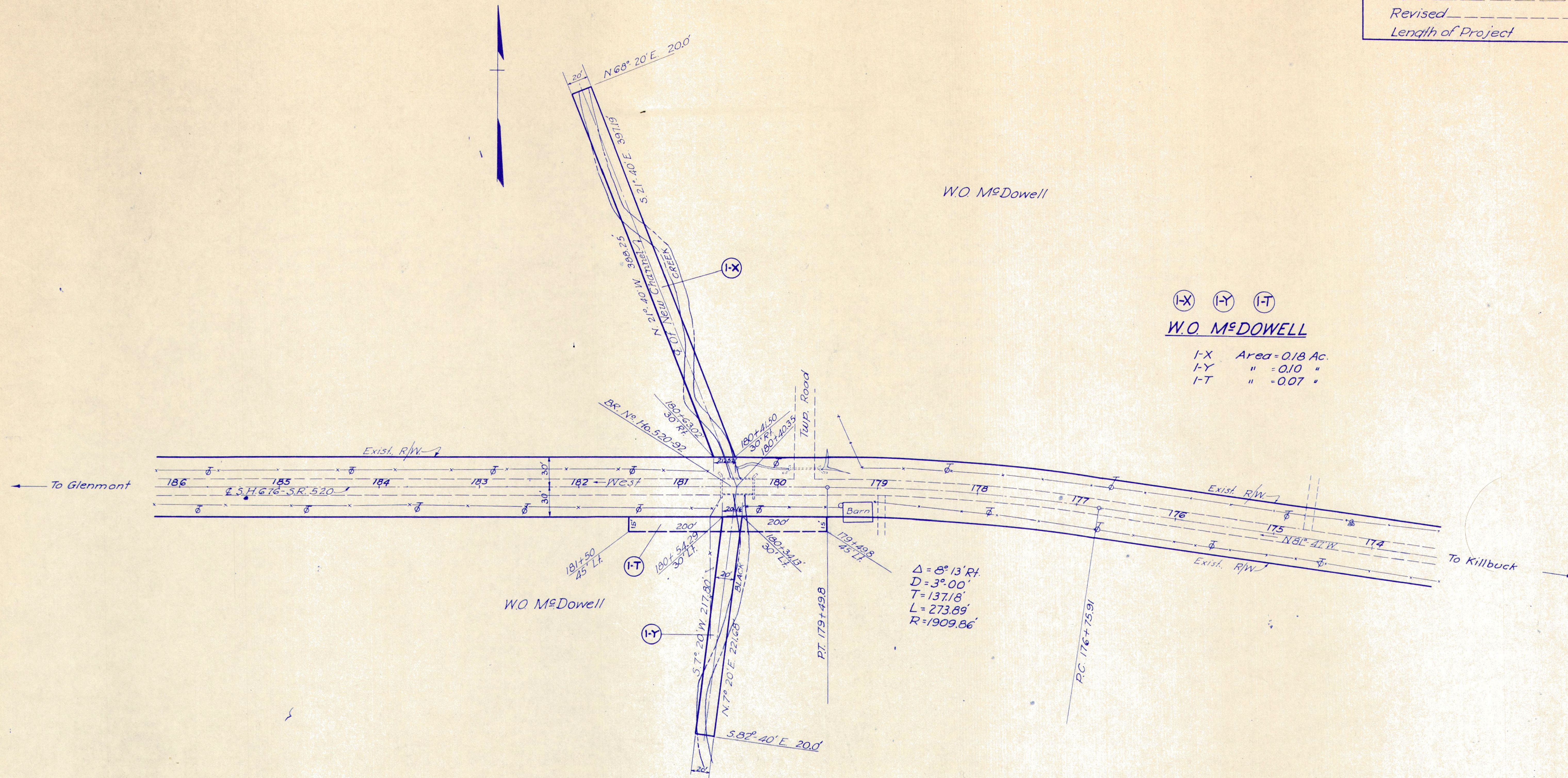


KILLBUCK TWP - SEC. 9 - T.8-R.8

HOLMES COUNTY
S.H. 676 SEC. A. (PT.)
R/W PLANS



Date: 11-12-42
Revised _____
Length of Project _____



(I-X) (I-Y) (I-T)
W.O. McDOWELL
I-X Area = 0.18 Ac.
I-Y " = 0.10 "
I-T " = 0.07 "