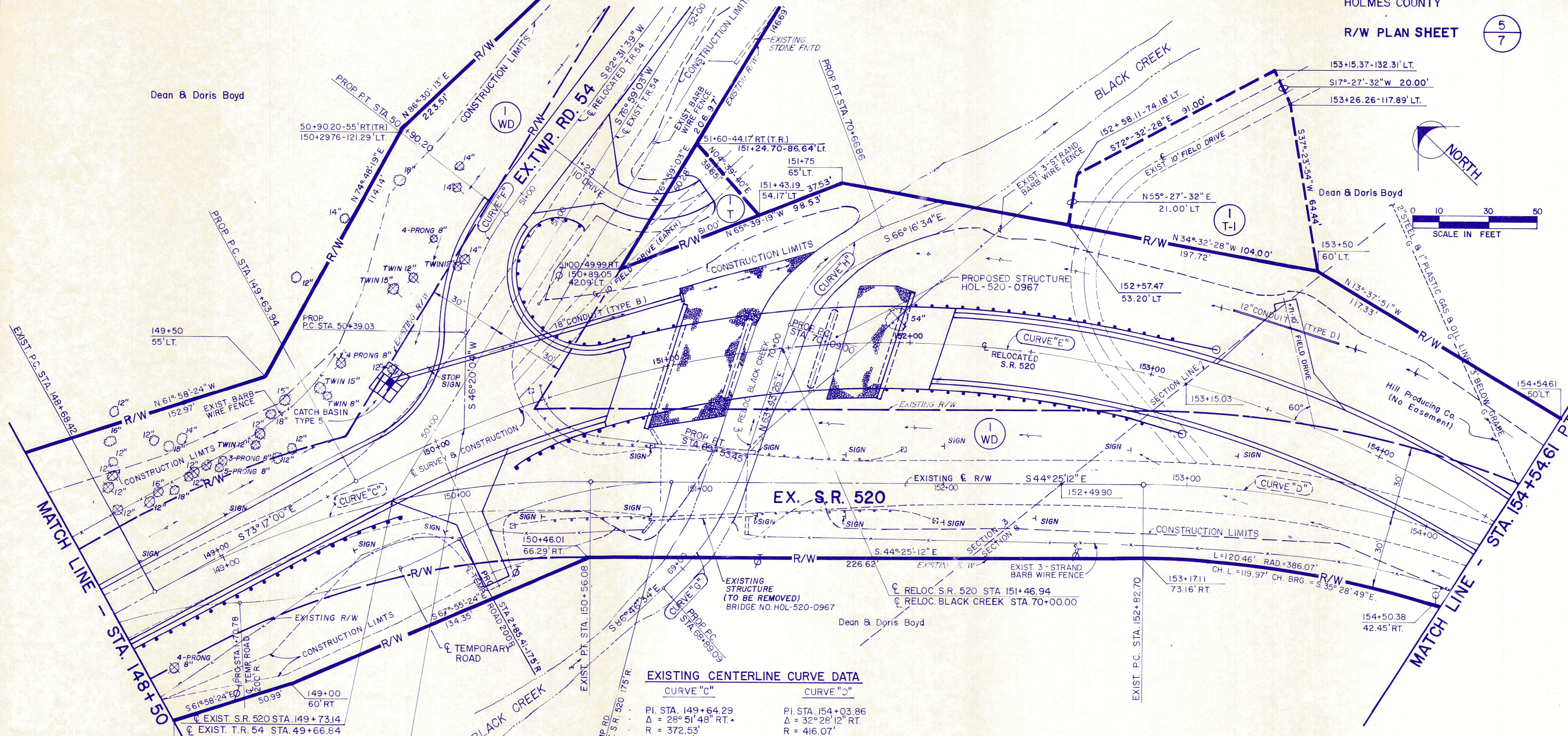


HOLMES COUNTY KILLBUCK TOWNSHIP  
SECTION 3 & 8 TWP-8N RANGE - 8W



EXISTING CENTERLINE CURVE DATA

CURVE "C"		CURVE "D"	
PI. STA. 149+64.29	Δ = 28° 51' 48" RT.	PI. STA. 154+03.86	Δ = 32° 28' 12" RT.
R = 372.53'	T = 95.87'	R = 416.07'	T = 121.16'
L = 187.66'	CH = 185.69'	L = 235.79'	CH = 232.65'
D = 15° 22' 49"	E = 12.14'	D = 13° 46' 14"	E = 17.28'
PC. STA. 148+68.42	PT. STA. 150+56.08	PC. STA. 152+82.70	PT. STA. 155+18.49

PROPOSED CENTERLINE CURVE DATA

CURVE "E"		CURVE "F"	
PI. STA. 152+35.74	Δ = 61° 20' 00" RT.	PI. STA. 50+65.50	Δ = 36° 11' 35" RT.
R = 458.37'	T = 271.80'	R = 81.00'	T = 26.47'
L = 467.57'	CH = 490.67'	CH = 50.32'	L = 51.17'
D = 12° 30' 00"	E = 74.53'	D = 70° 44' 08"	E = 4.22'
PC. STA. 149+63.94	PT. STA. 154+54.61	PC. STA. 50+39.03	PT. STA. 50+90.20

BLACK CREEK PROPOSED CENTERLINE CURVE DATA

CURVE "G"		CURVE "H"	
PI. STA. 69+22.00	Δ = 29° 30' 00" LT.	PI. STA. 70+40.00	Δ = 51° 00' 00" RT.
R = 125.00'	T = 32.91'	R = 65.00'	T = 31.00'
CH = 63.65'	L = 64.36'	CH = 55.96'	L = 57.86'
D = 45° 50' 12"	E = 4.26'	D = 88° 08' 50"	E = 7.02'
PC. STA. 68+89.09	PT. STA. 69+53.45	PC. STA. 70+09.00	PT. STA. 70+66.86

REV.	DATE	DESCRIPTION
5-4-88		ADDED DRIVE Rt. of C Sta. 150+00 & REVISED DRIVE Lt. of C Sta. 153+71
2-25-88		COMPLETION DATE

HOLMES COUNTY KILLBUCK TOWNSHIP  
SECTION 8 TWP-8N RANGE -8W

CALC BY L.B.P. DATE 10/14/81  
CHKD BY G.S. DATE 10/14/81  
HOLMES COUNTY  
R/W PLAN SHEET

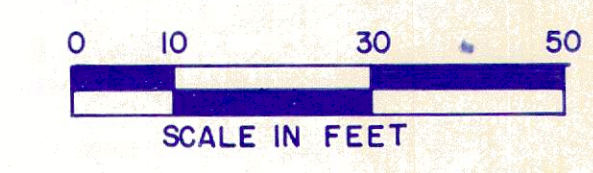
HOL - 520-9.57

OHIO

35

FHWA REGION 5

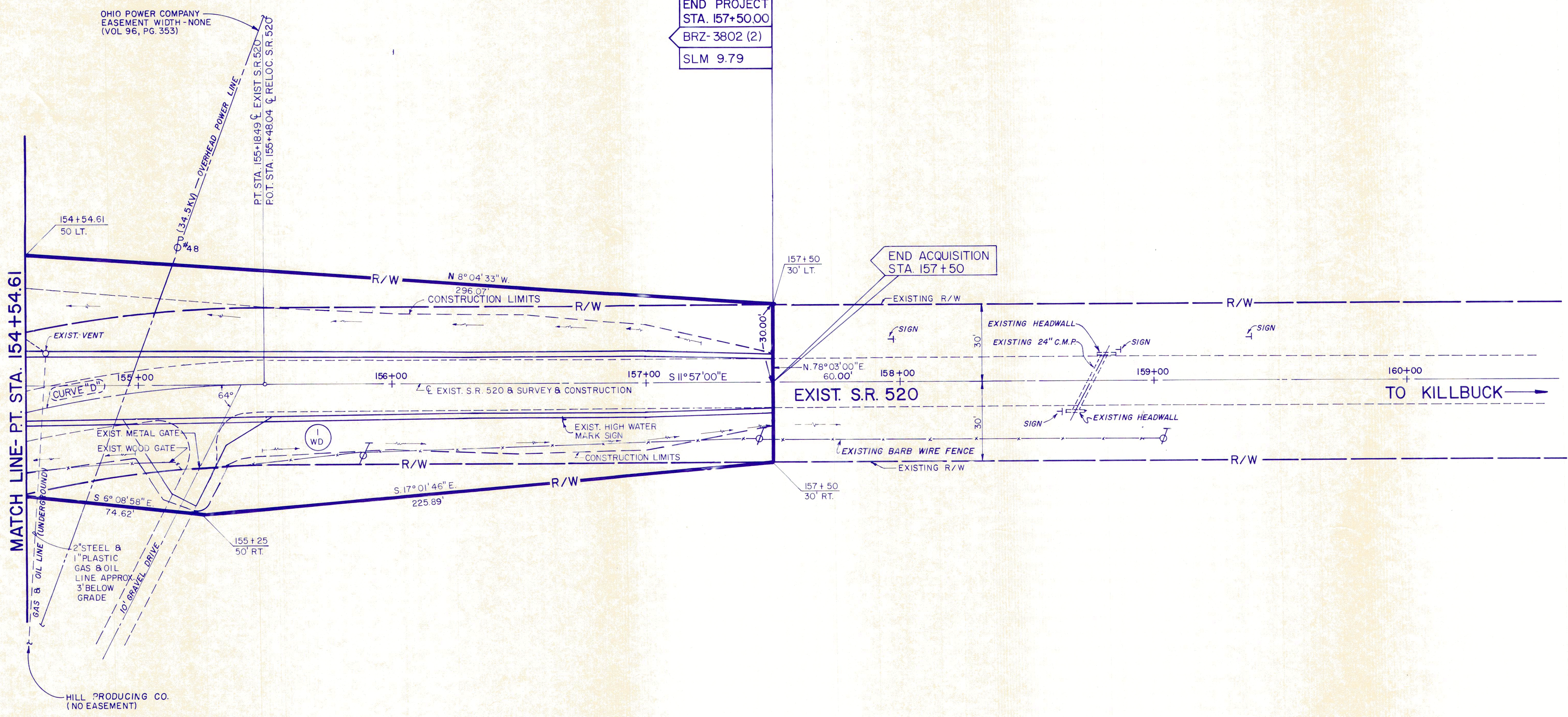
36



6  
7

END PROJECT  
STA. 157+50.00  
BRZ-3802 (2)  
SLM 9.79

END ACQUISITION  
STA. 157+50



EXISTING CENTERLINE CURVE DATA

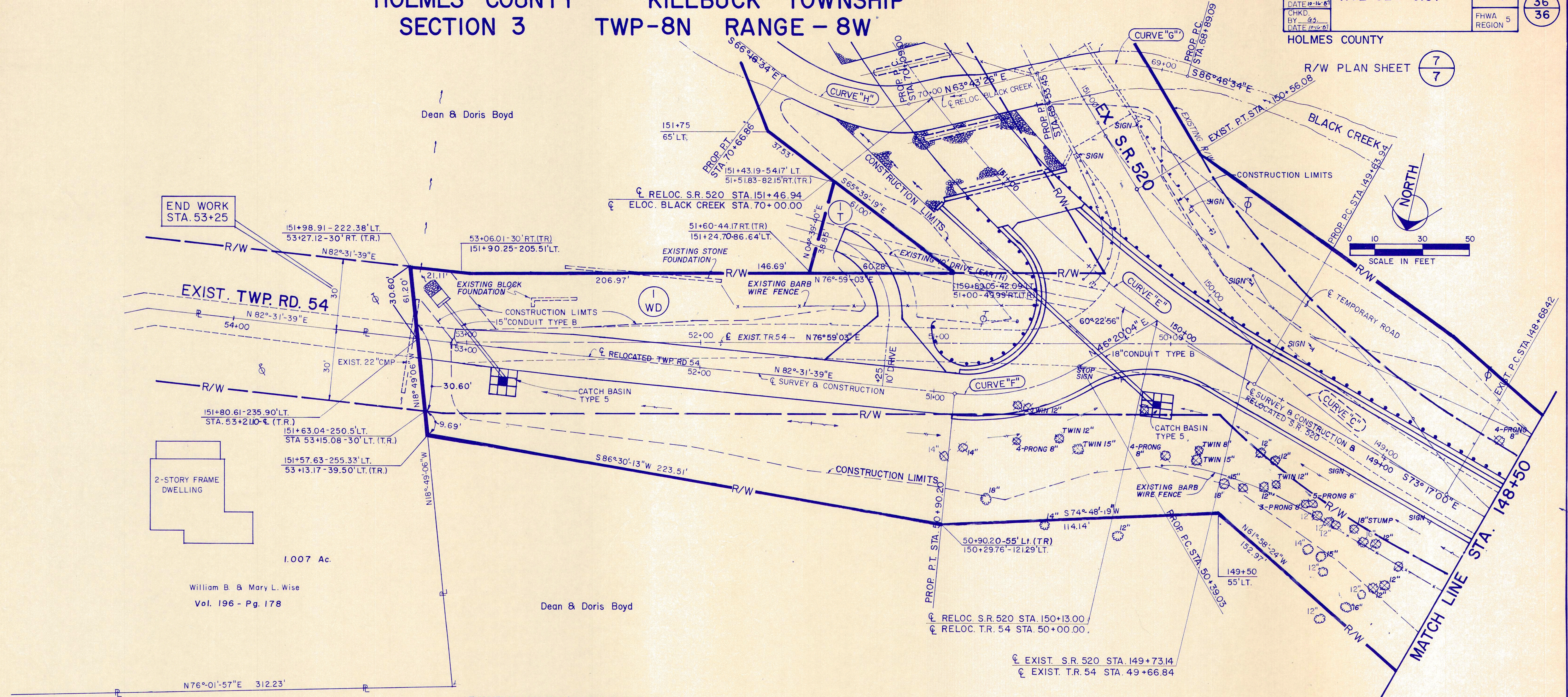
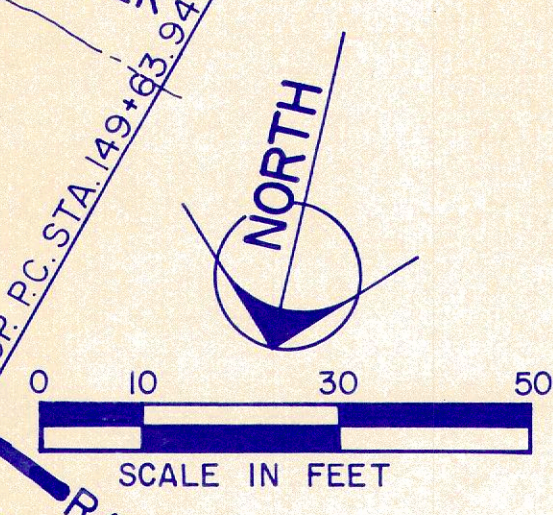
CURVE "D"  
P.I. STA. 154+03.86  
 $\Delta = 32^\circ 28' 12''$  RT.  
R = 416.07'  
T = 121.16'  
L = 235.79'  
CH = 232.65'  
D = 13° 46' 14"  
E = 17.28'  
P.C. STA. 152+82.70  
P.T. STA. 155+18.49  
= P.O.T. RELOC. S.R. 520  
STA. 155+48.04

REV.	DATE	DESCRIPTION
	5-4-88	DELETED DRIVE LT. of $\phi$ Sta. 155+17
	2-25-88	COMPLETION DATE

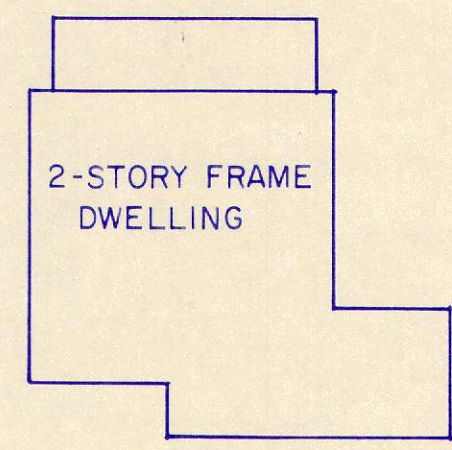
HOLMES COUNTY  
SECTION 3  
KILLBUCK TOWNSHIP  
TWP-8N RANGE-8W

CALC. BY L.P.D. HOL-520-9.57 OHIO 36  
DATE 10-16-87  
CHKD. BY G.S. FHW REGION 5 36  
DATE 10-16-87  
HOLMES COUNTY

R/W PLAN SHEET 7/7



END WORK  
STA. 53+25



1.007 Ac.  
William B. & Mary L. Wise  
Vol. 196 - Pg. 178

EXISTING CENTERLINE CURVE DATA

CURVE "C"  
P.I. STA. 149+64.29  
R = 372.53'  
Δ = 28°51'48" RT.  
T = 95.87'  
L = 187.66'  
CH = 185.69'  
U = 15°22'49"  
E = 12.14'  
P.C. STA. 148+68.42  
P.T. STA. 150+56.08

PROPOSED CENTERLINE CURVE DATA

CURVE "E"	CURVE "F"
P.I. STA. 152+35.74	P.I. STA. 50+65.50
R = 458.37'	R = 81.00'
Δ = 61°20'00" RT.	Δ = 36°11'35" RT.
T = 271.80'	T = 26.47'
CH = 467.57'	CH = 50.32'
L = 490.67'	L = 51.17'
D = 12°30'00"	D = 70°44'08"
E = 74.53'	E = 4.22'
P.C. STA. 149+63.94	P.C. STA. 50+39.03
P.T. STA. 154+54.61	P.T. STA. 50+90.20

REV.	DATE	DESCRIPTION
	2-25-88	COMPLETION DATE