

CENTERLINE SURVEY PLAT

HOL-514-4.60

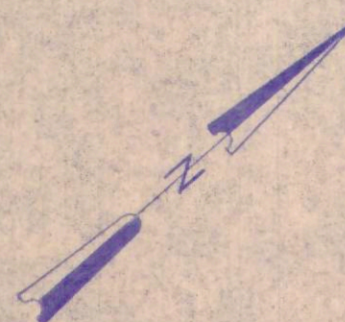
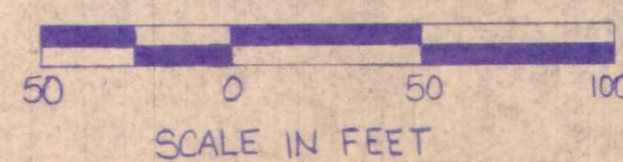
HOLMES COUNTY, KNOX TOWNSHIP, SECTION 23, T-19-N, R-15-W

STATE JOB NUMBER	FHWA REGION	STATE	PROJECT
	5	OH10	

11
13

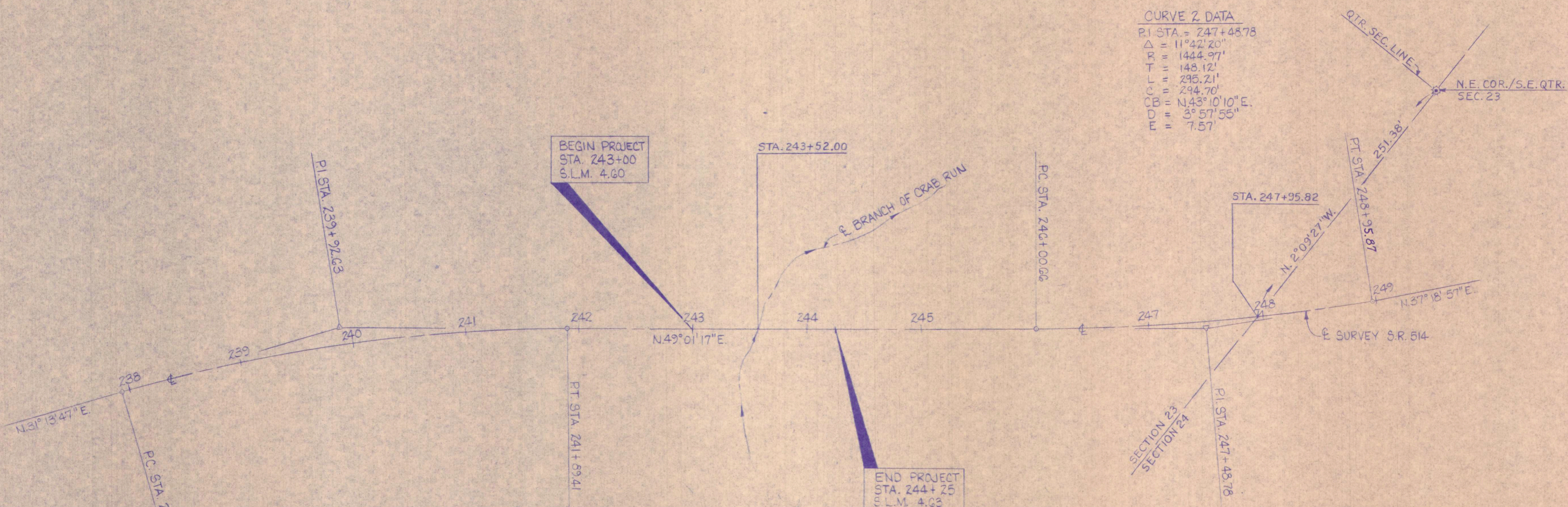
HOLMES COUNTY
HOL-514-4.60
RIGHT OF WAY PLAN

1
3



CURVE 2 DATA

P.I. STA. = 247+48.78
 $\Delta = 11^\circ 42' 20''$
 R = 1444.97'
 T = 148.12'
 L = 296.21'
 C = 294.70'
 CB = N43°10'10"E.
 D = 3° 57' 55"
 E = 7.57'



CURVE 1 DATA

P.I. STA. = 239+92.63
 $\Delta = 17^\circ 47' 30''$
 R = 1277.78'
 T = 200.00'
 L = 396.78'
 C = 396.19'
 CB = N40°07'32"E.
 D = 4° 29' 05"
 E = 15.56'

I HEREBY CERTIFY THAT THIS PLAT IS A TRUE REPRESENTATION OF A SURVEY CONDUCTED FOR THE OHIO DEPARTMENT OF TRANSPORTATION BY _____ REG.# _____ DATE _____

BEARING ROTATION

PLAN: N. 37°18'57"E.
 RECORD: N. 40°40'10"E.

RECORDING BOX	
RECEIVED _____	AT _____
RECORDED _____	FILE NO. _____
PLAT BOOK _____	PAGES _____
SIGNED _____	HOLMES COUNTY, OHIO

TYPE FUNDS : STATE	
PLAN COMPLETED: 11-18-92	
REV. DATE	DESCRIPTION

