

S.H.(I.C.H.) 341. SEC. Millersburg-Jackson St.  
HOLMES COUNTY

STATE OF OHIO  
DEPARTMENT OF HIGHWAYS  
MILLERSBURG-CANAL DOVER ROAD  
I.C.H. NO. 341 SEC. Millersburg - Jackson St. (PART)  
HOLMES COUNTY

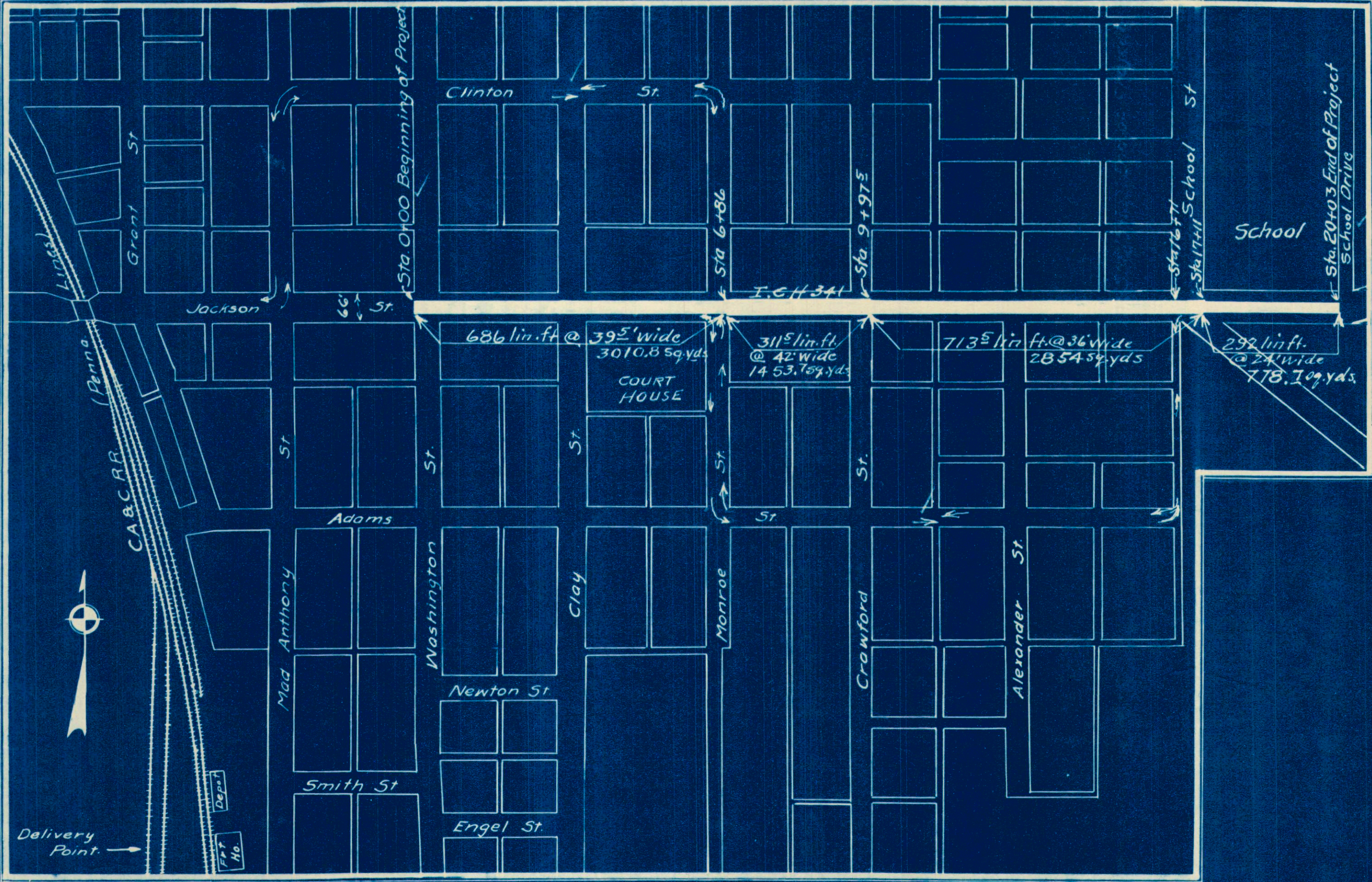
The Standard Specifications of the State of Ohio, Division of Highways, in force on date of Contract will govern this improvement.

I hereby approve these plans and declare that the making of this improvement will require the closing of the highway and detours will be provided as shown on plans and estimates from Sta 0+00 to Sta. 16+71. From Sta. 16+71 to Sta. 20+03 the Contractor shall construct half width at a time and maintain one way Traffic Lane and shall provide safe guards, protections, lights signal men and watchmen who shall be on duty day and night.

MILLERSBURG VILLAGE HARDY TOWNSHIP JUNE 1931

SCALES  
Typical Sections 1"=1'-0"  
Plan 1"= 50'  
Cross Sections 3/4"= 1'-0"

INDEX OF SHEETS  
Title Page Page 1  
Typical Sections 2  
Plan 1  
Cross Sections 2  
Summary Sheet 2



LOCATION PLAN

SCALE OF FEET  
0 50 100 200 300 400 500 600  
PORTION TO BE IMPROVED

Approved Karl Snyder  
Date 8/24/31 Resident District Deputy Director  
Approved Charles E. ...  
Date 8/31/31 Resident Division Director  
Approved Elmer Hilley  
Date 9-2-31 Chief Engineer  
Bureau of Construction  
Approved \_\_\_\_\_  
Date \_\_\_\_\_ Chief Engineer  
Bureau of Maintenance  
Approved \_\_\_\_\_  
Date \_\_\_\_\_ Chief Engineer  
Bureau of Bridges  
Approved H. O. Chapman  
Date 9-3-31 Chief Engineer and  
First Asst. Director  
Approved Oliver Merrill  
Date 9-3-31 Director of Highways  
Recommended for Approval \_\_\_\_\_  
Date \_\_\_\_\_ District Engineer  
Bureau of Public Roads  
Recommended for Approval \_\_\_\_\_  
Date \_\_\_\_\_ Chief Engineer  
Bureau of Public Roads  
Approved \_\_\_\_\_  
Date \_\_\_\_\_ Chief of Bureau

Approved By Village Council, Millersburg, O.  
Is. A. Jordan Mayor  
Sam. ... Clerk

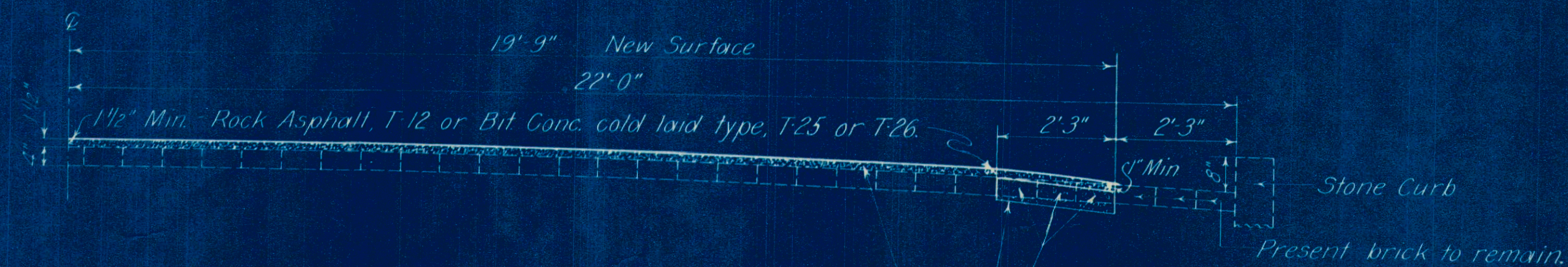


# TYPICAL SECTIONS

Scale - 1/2 in. = 1 Ft.

FED. AID DIST. NO.	STATE	FED. AID PROJECT	FISCAL YEAR
10	OHIO		1931

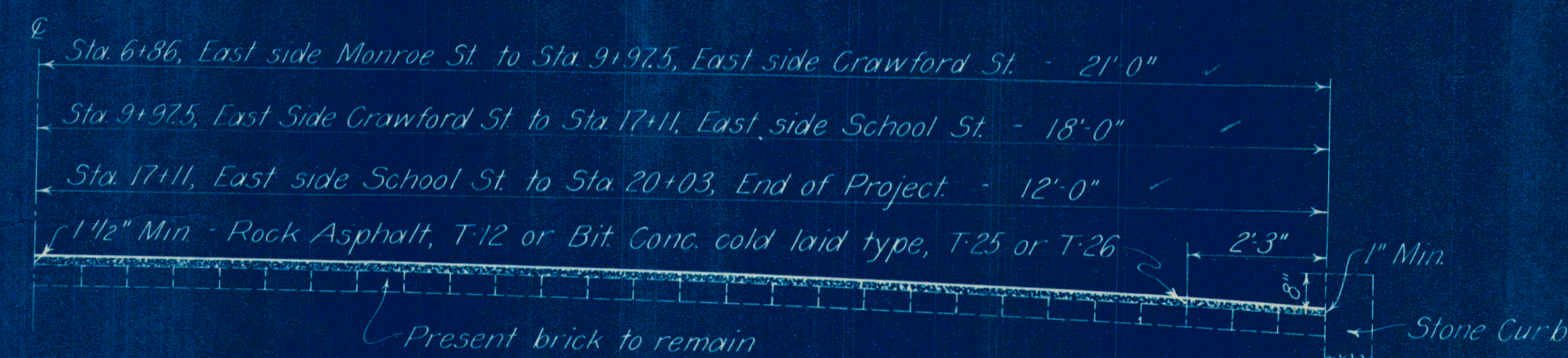
S.H.(I.C.H.) 341- SEC. 'MILLERSBURG'  
HOLMES COUNTY



## HALF SECTION - 39.5' PAVEMENT

Use from West side of Washington St, Sta 0+00 to  
East side of Monroe St, Sta 6+86.

Remove 3 rows (2' 9") of present brick, and replace with concrete (1:7 1/2 Mix)  
5" thick as shown.  
Remove brick from Sta 0+00 to Sta 6+86 both sides, = 686 lin. ft. @ 2' 3" width = 343 Sq. Yds.  
Place Concrete (1:7 1/2 Mix) from Sta. 0+00 to Sta 6+86 both sides = 686 lin. ft. @ 2' 3" width = 343 Sq. Yds.  
Place Surface Course from Sta 0+00 to Sta. 6+86 = 686 lin. ft. @ 39' 6" width = 3010.8 Sq. Yds.



## HALF SECTION - 42' & 36' & 24' PAVEMENT

Use 42' width from Sta. 6+86 to Sta. 9+97.5 = 311.5 lin. ft. @ 42' width = 1453.7 Sq. Yds.  
Use 36' width from Sta. 9+97.5 to Sta. 17+11 = 713.5 lin. ft. @ 36' width = 2854.0 Sq. Yds.  
Use 24' width from Sta. 17+11 to Sta. 20+03 = 292 lin. ft. @ 24' width = 778.7 Sq. Yds.

Note:

Present brick pavement shall be thoroughly cleaned and  
painted with AE-3, payment for same included in price bid per  
sq. yd. of surface course.

Depressions in present pavement shall be filled with T-18  
if T-12 is used for surface course; or with T-25 or T-26 if these  
materials are used for surface. Payment for filling depressions  
to be on the basis of tons of material used.

If T-25 or T-26 is used a finishing machine of approved type  
shall be used in shaping the surface of the pavement.

## SUMMARY of QUANTITIES

PAVEMENT QUANTITIES							
From Sta.	To Sta.	Length Lin. Ft.	Width	Removal Present Pavt. Sq. Yds.	5" Concrete Base Sq. Yds.	T-12 T-25 or T-26 Sq. Yds.	T-18 T-25 or T-26 Tons
0+00	6+86	686	2 x 2' 3"	343			
0+00	6+86	686	2 x 2' 3"		343		
0+00	20+03	2,003	Patching				100
0+00	6+86	686	39' 6"			3,010.8	
6+86	9+97.5	311.5	42' 0"			1,453.7	
9+97.5	17+11	713.5	36' 0"			2,854.0	
17+11	20+03	292	24' 0"			778.7	
TOTALS				343	343	8,097.2	100