

SH (ICH) 341. SEC. Millersburg-Jackson St.
HOLMES COUNTY

STATE OF OHIO
DEPARTMENT OF HIGHWAYS
MILLERSBURG-CANAL DOVER ROAD
I.C.H. NO. 341 SEC. Millersburg - Jackson St. (PART)
HOLMES COUNTY

The Standard Specifications of the State of Ohio, Division of Highways, in force on date of Contract will govern this improvement.

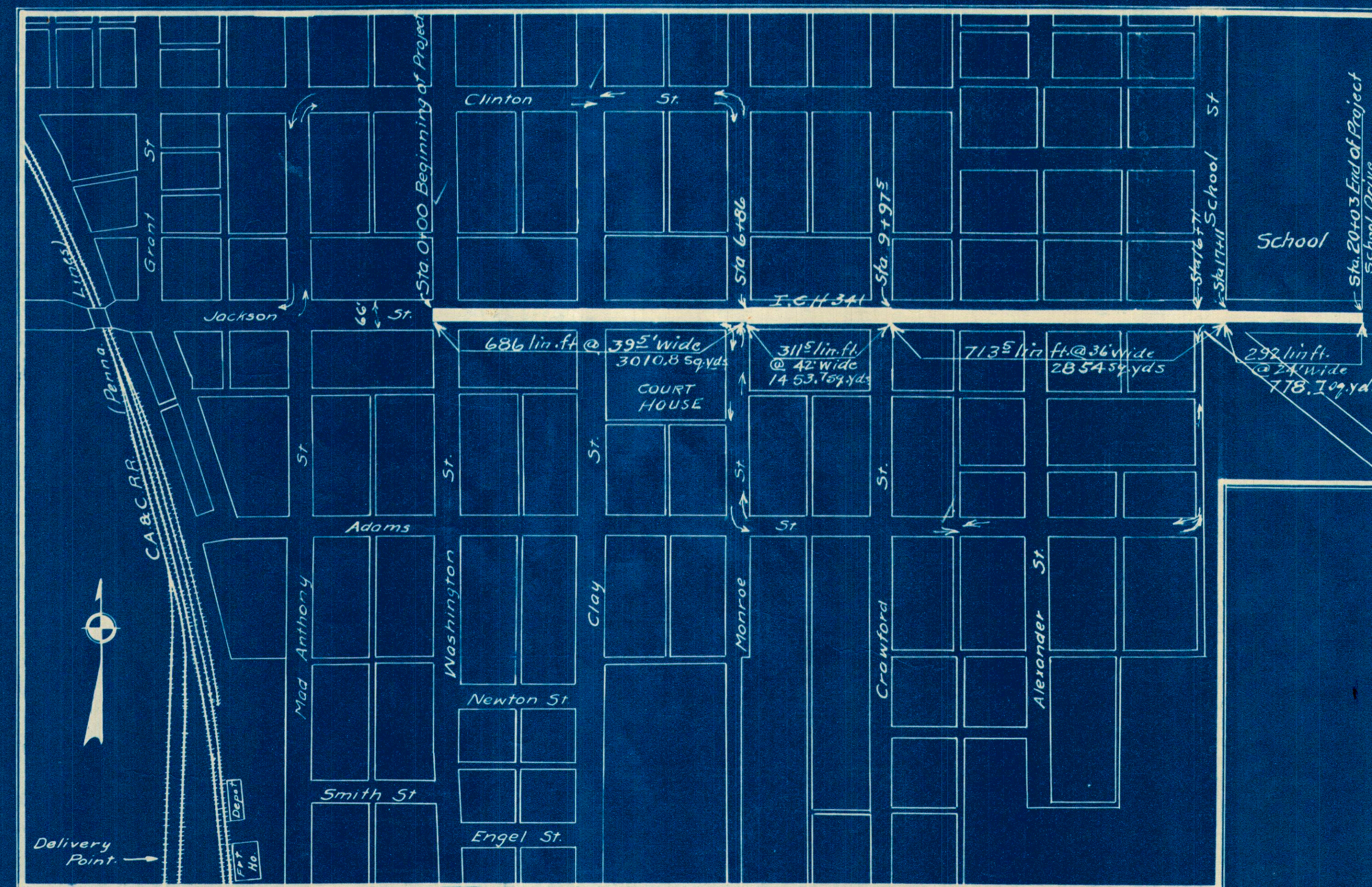
I hereby approve these plans and declare that the making of this improvement will require the closing of the highway and detours will be provided as shown on plans and estimates from Sta 0+00 to Sta. 16+71. From Sta. 16+71 to Sta. 20+03 the Contractor shall construct half width at a time and maintain one Traffic Lane and shall provide safe guards, protections, lights signal men and watchmen who shall be on duty day and night.

MILLERSBURG VILLAGE HARDY TOWNSHIP JUNE 1931

SCALES
Typical Sections 1" = 1'-0"
Plan 1" = 50'
Cross Sections 3/4" = 1'-0"

INDEX OF SHEETS

Title Page	Page 1
Typical Sections	2
Plan	1
Cross Sections	2
Summary Sheet	2



LOCATION PLAN

SCALE OF FEET
0 50 100 200 300 400 500 600

PORTION TO BE IMPROVED

Approved Karl Snyder
Date 8/24/31 Resident District Deputy Director

Approved Charles Erskine
Date 8/31/31 Resident Division Director

Approved Edwin Hilley
Date 9/2-31 Chief Engineer
Bureau of Construction

Approved _____
Date _____ Chief Engineer
Bureau of Maintenance

Approved _____
Date _____ Chief Engineer
Bureau of Bridges

Approved H. O. Chapman
Date 9-3-31 Chief Engineer 6th
First Asst. Director

Approved O. W. Merrill
Date 9-3-31 Director of Highways

Recommended for Approval _____
Date _____ District Engineer
Bureau of Public Roads

Recommended for Approval _____
Date _____ Chief Engineer
Bureau of Public Roads

Approved _____
Date _____ Chief of Bureau

Approved
By Village Council, Millersburg, O.

Is. A. Jordan Mayor
Sam Beach Jr. Clerk

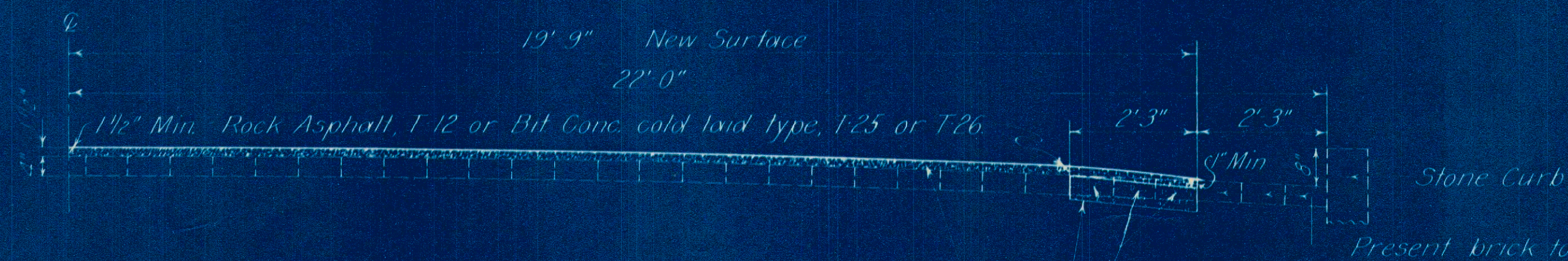
TYPICAL SECTIONS

Scale 1/2 in = 1 Ft.

FED. AID DIST. NO.	STATE	FED. AID PROJECT	FISCAL YEAR
10	OHIO		1931

2
2

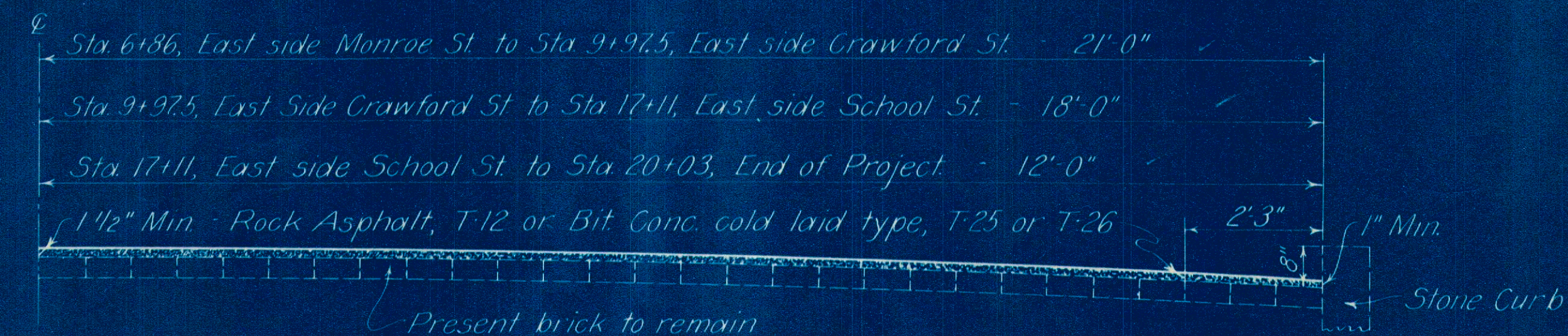
S.H. (I.C.H.) 341 - SEC. 'MILLERSBURG' Rd.
HOLMES COUNTY



HALF SECTION - 39.5' PAVEMENT

Use from West side of Washington St, Sta 0+00 to East side of Monroe St, Sta 6+86.

- Remove 3 rows (2' 9") of present brick, and replace with concrete (1-7 1/2 Mix) 5" thick as shown.
- Remove brick from Sta 0+00 to Sta 6+86 both sides = 686 lin. ft. @ 2'-3" width = 343 Sq. Yds.
- Place Concrete (1-7 1/2 Mix) from Sta 0+00 to Sta 6+86 both sides = 686 lin. ft. @ 2'-3" width = 343 Sq. Yds.
- Place Surface Course from Sta 0+00 to Sta 6+86 = 686 lin. ft. @ 39'-6" width = 3010.8 Sq. Yds.



HALF SECTION - 42' & 36' & 24' PAVEMENT

- Use 42' width from Sta 6+86 to Sta 9+97.5 = 311.5 lin. ft. @ 42' width = 1453.7 Sq. Yds.
- Use 36' width from Sta 9+97.5 to Sta 17+11 = 713.5 lin. ft. @ 36' width = 2854.0 Sq. Yds.
- Use 24' width from Sta 17+11 to Sta 20+03 = 292 lin. ft. @ 24' width = 778.7 Sq. Yds.

Note:

Present brick pavement shall be thoroughly cleaned and painted with AE-3, payment for same included in price bid per sq. yd. of surface course.

Depressions in present pavement shall be filled with T-18 if T-12 is used for surface course; or with T-25 or T-26 if these materials are used for surface. Payment for filling depressions to be on the basis of tons of material used.

If T-25 or T-26 is used a finishing machine of approved type shall be used in shaping the surface of the pavement.

SUMMARY of QUANTITIES

PAVEMENT QUANTITIES							
From Sta.	To Sta.	Length Lin. Ft.	Width	Removal Present Pavt. Sq. Yds.	5" Concrete Base Sq. Yds.	T-12 T-25 or T-26 Sq. Yds.	T-18 T-25 or T-26 Tons
0+00	6+86	686	2 x 2'-3"	343			
0+00	6+86	686	2 x 2'-3"		343		
0+00	20+03	2,003	Patching				100
0+00	6+86	686	39'-6"			3,010.8	
6+86	9+97.5	311.5	42'-0"			1,453.7	
9+97.5	17+11	713.5	36'-0"			2,854.0	
17+11	20+03	292	24'-0"			778.7	
TOTALS				343	343	8,097.2	100

HOLMES

341

MILLERSBURG

1931