

STA. 306+72.5
BEGINNING OF
PROJECT

M. B. Pomerene
Millersburg, O.

Highway Easement Record-Vol. I Page 229

Geo. W. Beechy
Berlin O.

Highway Easement Record-Vol. I Page 315

W. E. Beechy
Berlin Ohio

Highway Easement Record-Vol. I Page 323

Jonas Burkholder
Berlin, Ohio

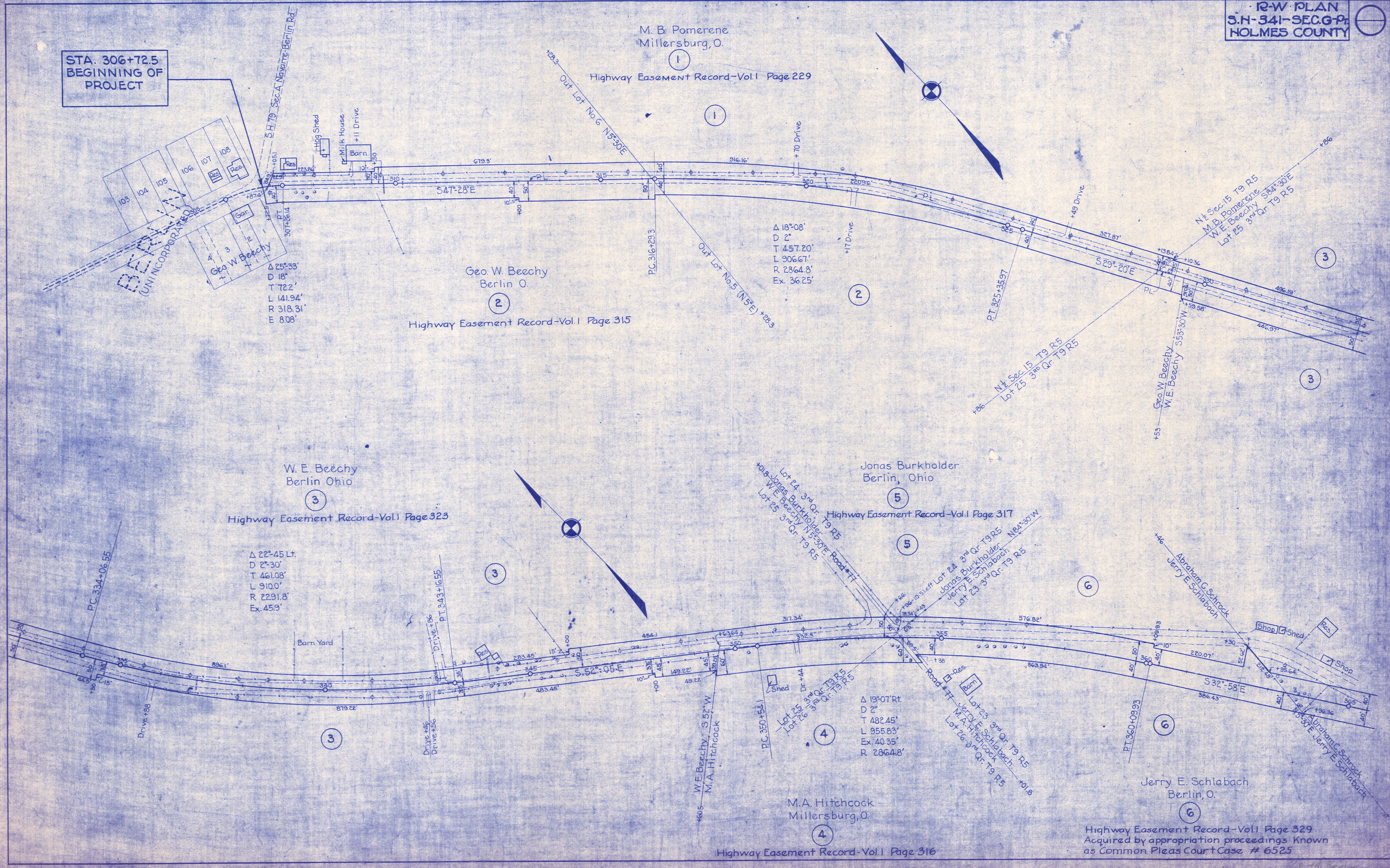
Highway Easement Record-Vol. I Page 317

M.A. Hitchcock
Millersburg, O.

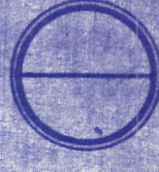
Highway Easement Record-Vol. I Page 316

Jerry E. Schlabach
Berlin, O.

Highway Easement Record-Vol. I Page 329
Acquired by appropriation proceedings Known
as Common Pleas Court Case # 6525



SR. 39 Berlin



Abraham C. Schrock
Berlin, O

7

Highway Easement Record Vol. I Page 325

Δ 43°-0' Lt.
D 5°
L 451.42'
T 860.0'
Ex. 85.72'
R 1145.9'

7

Lot 10, 3rd Qr. T9 R5
William Miller
Abraham C. Schrock
Lot 23, 3rd Qr. T9 R5

9

Δ 2°-45' Lt.
D 0°-30'
L 275.1'
T 550.0'
Ex. 3.4'
R 11,459.2'

9

Joe E. Kline
Berlin O.

8

Highway Easement Record Vol. I Page 321

Lot 23, 3rd Qr. T9 R5
Abraham C. Schrock
Edward Kline S 84° 30' E
Lot 22, 3rd Qr. T9 R5

William Miller
Berlin, O.

9

Highway Easement Record Vol. I Page 327

STA. 398+35- END
OF PROJECT

Δ 4°-13' Lt.
D 1°-0'
L 2109'
T 421.67'
R 57296'
Ex. 39'

Δ 2°-45' Lt.
D 0°-30'
L 275.1'
T 550.0'
R 11459.6'
Ex. 3.40'

Note: The survey of 1921
continues the 0°-30' curve
to P.T. Sta. 348+21.07
Near Sta. 352+35.11
See 1941 Plat. Maps
for additional R/W
on this line.

PC 391+15.4

PC 418+61

PT 422+82.67

Res.

Barn

Barn

Res.

Woodshed

Tool House