

HARDY TOWNSHIP - SEC. 13 - T. 9 - R. 7

HOLMES COUNTY
S.H. 145 - SEC. A-1
R/W PLANS



Date: 11-17-1942

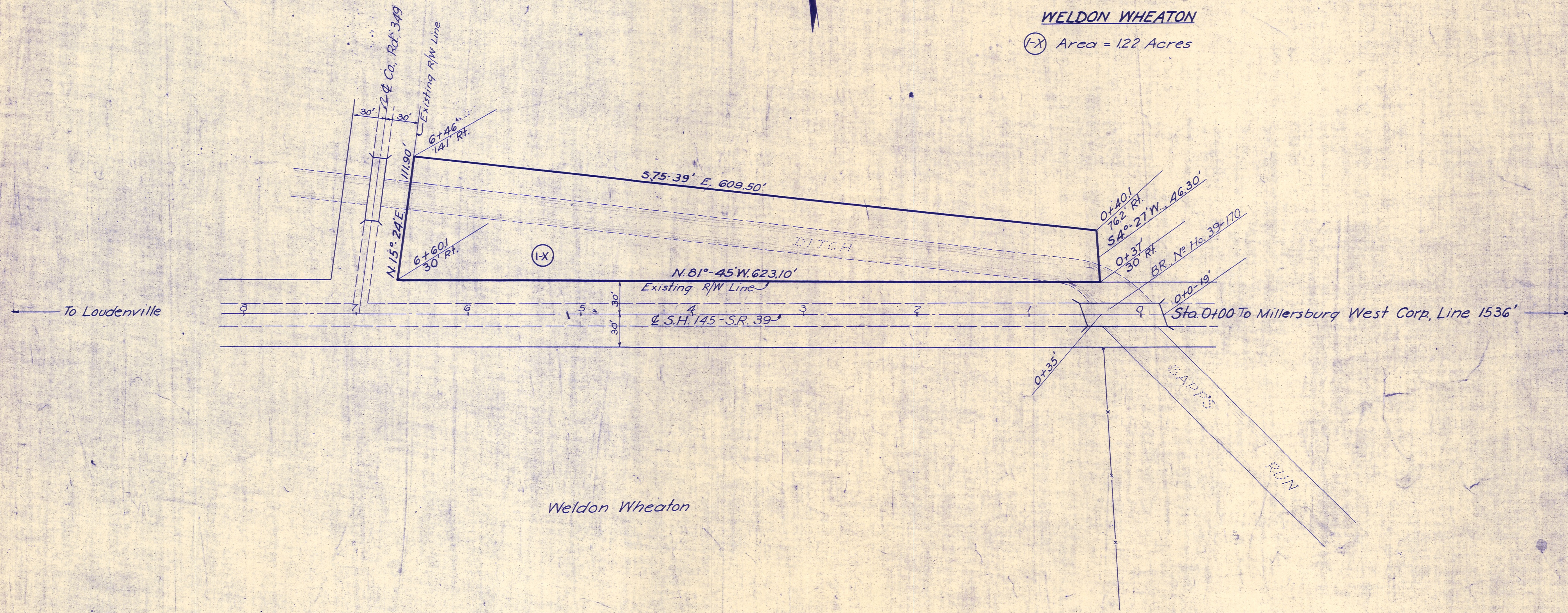
Revised _____

Length of Project _____

Weldon Wheaton

WELDON WHEATON

(I-X) Area = 122 Acres



Weldon Wheaton