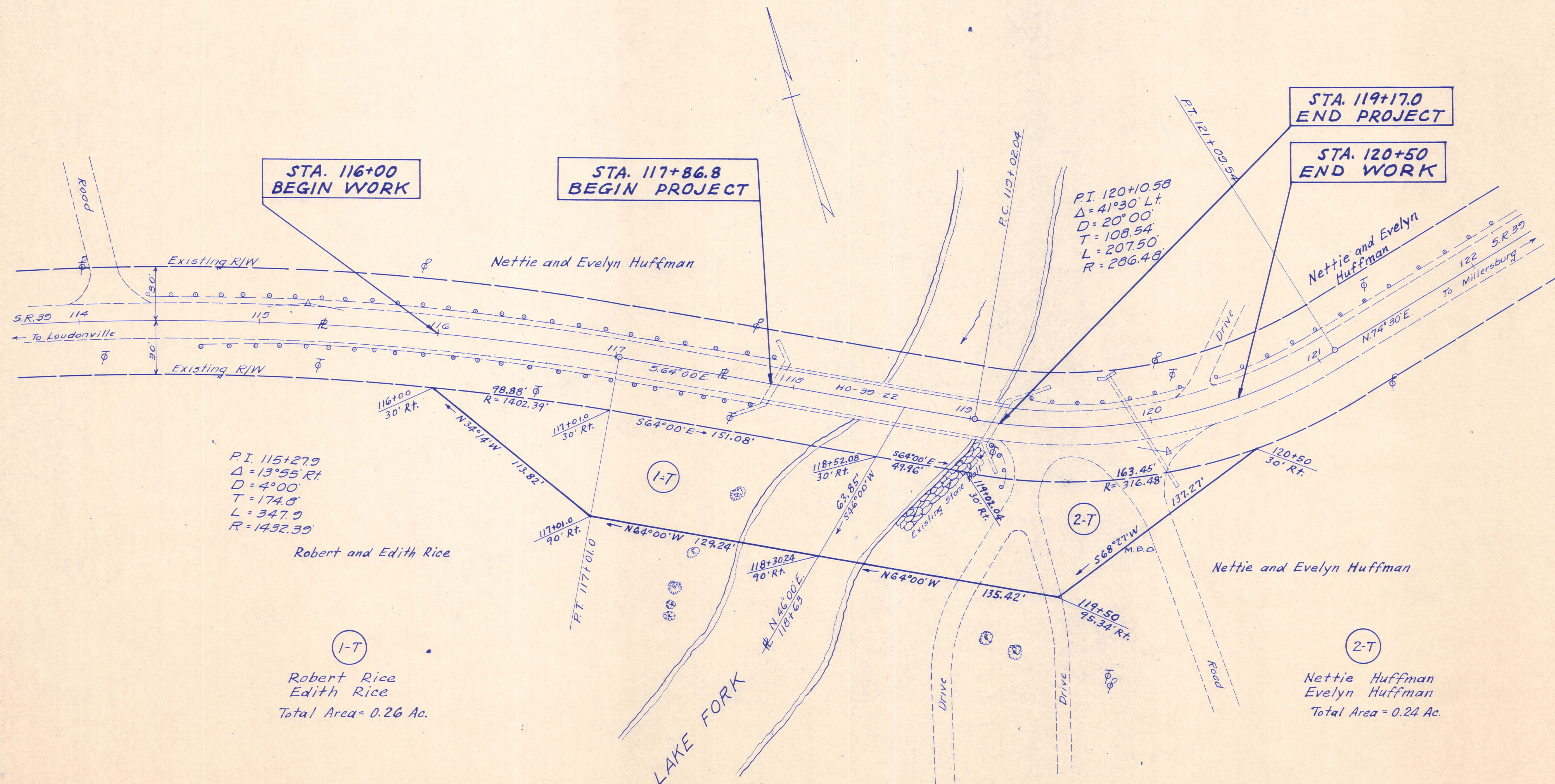


WASHINGTON TWP. - SEC. 8 - T. 19 - R. 15 - HOLMES CO.

FED. RD. DIVISION	STATE	PROJECT	TYPE FUNDS
2	OHIO		

HOL-39-2.23
R/W PLANS
Length of Project = 0.024 Mile
Scale 1" = 30'

18-14



P.I. 115+27.9
Δ = 13°55' Rt
D = 4°00'
T = 174.8'
L = 347.9'
R = 1432.39'

Robert and Edith Rice

(1-T)
Robert Rice
Edith Rice
Total Area = 0.26 Ac.

(2-T)
Nettie Huffman
Evelyn Huffman
Total Area = 0.24 Ac.

Res.