

STRUCTURES - 20' SPAN & UNDER								
Ref. No.	Station	Sec. Sheet	Removals			New Work		
			Type	Size	Length	Type	Size	Length
2-S	12+74	30	C.M.P.	24"	64'	Pipe	36"	87'

APPROACHES				
Ref. No.	Station	Side	Sec. Sheet	T-17
				Aggr. Cu. Yds.
3-A	12+91	Rt.	13	13
4-A	13+30	Lt.		6
5-A	14+36	Lt.	26	
6-A	16+00	Rt.	13	19
7-A	21+40	Rt.	27	
8-A	24+00	Rt.	17	15
9-A	24+00	Lt.	17	40
Sheet Totals				93

STORM SEWERS					
Ref. No.	Station	Side	Remove Lin. Ft.	Pipe Lin. Ft.	
				15"	12"
2-S	12+00	12+32	Lt.	33	82
Sheet Totals				83	82

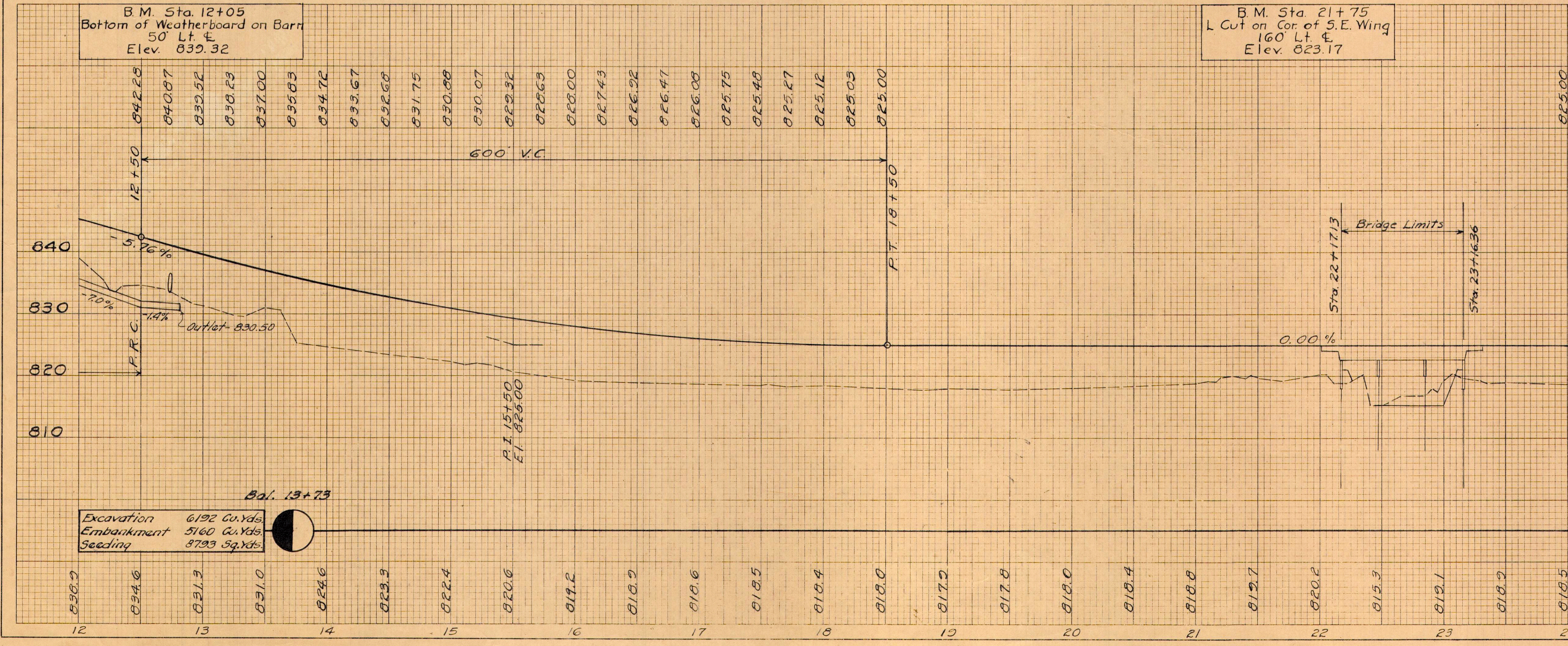
GUARD RAILS						
Ref. No.	Station		Side	Remove Lin. Ft.	New Lin. Ft.	Remarks
	From	To				
2-R	12+00	12+60	Lt.	60		
3-R	21+98	24+00	Lt.	192		
4-R	21+54	24+00	Lt.	234		
5-R	22+02.08	23+14.53	Lt.		13.5	29' is Bridge Railing
6-R	22+13.92	23+43.92	Rt.		26	30' is Bridge Railing
Sheet Totals				486	39.5	

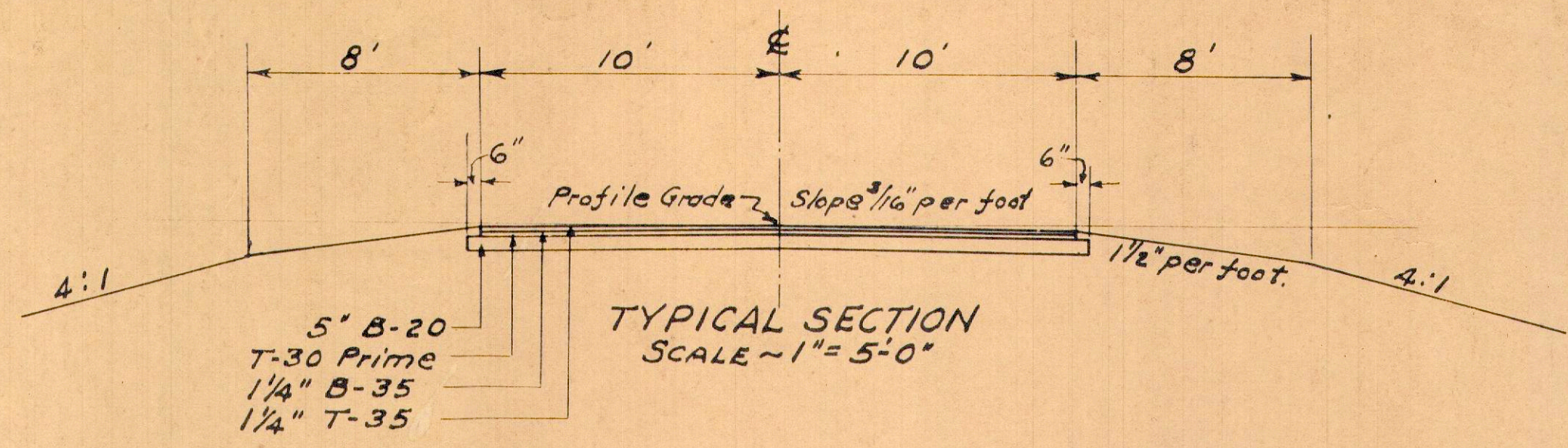
PAVEMENT REMOVAL			
Station	From	To	Pavem't
			Sq. Yds.
12+00	20+90		1945
21+60	24+00		516
Sheet Totals			2461

APPROACH SLABS					
Station	From	To	Sec. Sheet	Remove	Remarks
				Sq. Yds.	
22+02.13	22+17.13			40	AS-4-47
23+16.36	23+31.36			40	
Sheet Totals				80	80

SIDEWALKS					
Ref. No.	Station	Side	Remove Sq. Ft.	New	
				4"x4" Sq. Ft.	
1-SW	13+15	Rt.	208	129	
Sheet Totals				208	129

GUTTERS				
Ref. No.	Station		Side	Riprap
	From	To		Sq. Yds.
2-G	12+00	12+50	Rt.	33
Sheet Totals				33

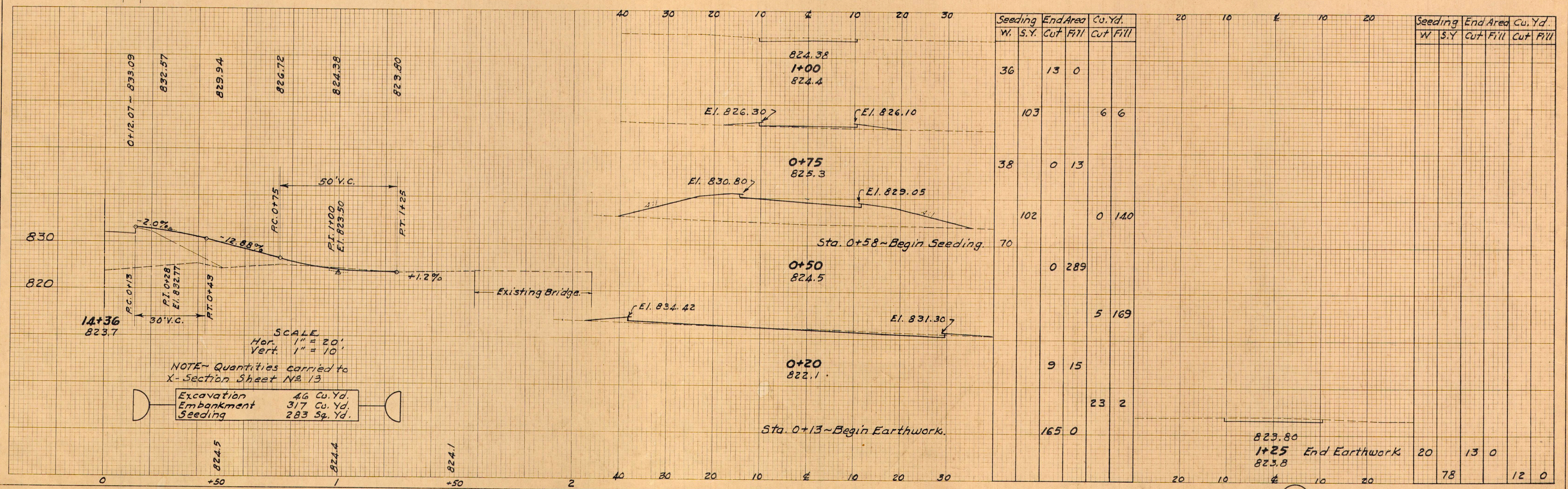
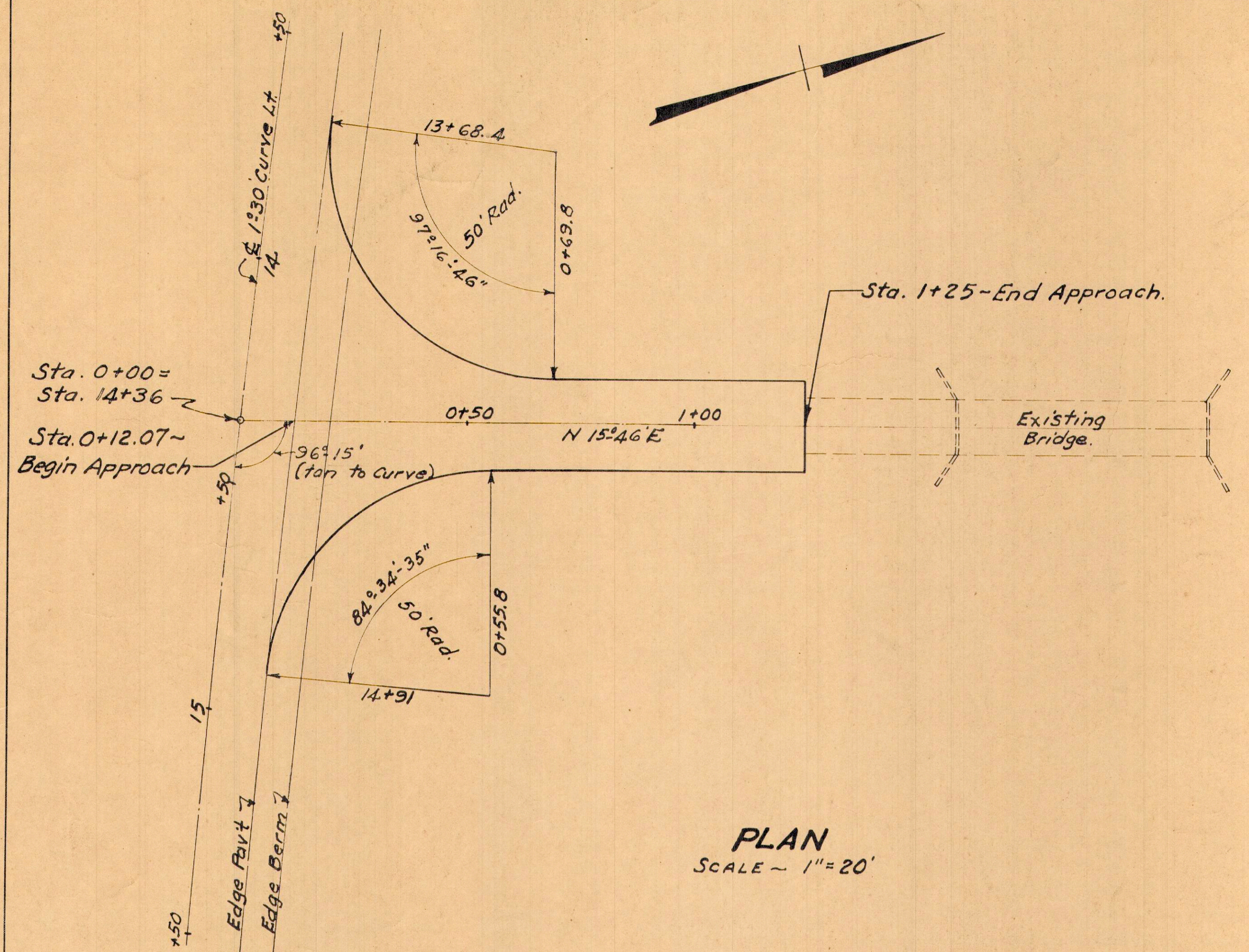




**ESTIMATED QUANTITIES**

* Pavement Area.	379	Sq. Yd.
* 5" Waterbound Macadam Base Area.	388	Sq. Yd.
* Bituminous Prime Area.	388	Sq. Yd.

\* Carried to pavement calculations. (Sheet No. 5)



NOTE - Quantities carried to X-Section Sheet No. 13

Excavation	46	Cu. Yd.
Embankment	317	Cu. Yd.
Seeding	283	Sq. Yd.