

SR 226 M-30

S. R. 226 Big Prairie

ROAD NO. STATE ROAD NO. YEAR
CHIO 1924

STATE OF OHIO
DEPARTMENT OF HIGHWAYS AND PUBLIC WORKS
DIVISION OF HIGHWAYS
BUREAU OF CONSTRUCTION

S. R. 226

I.C.H. No 24 Sec D
WAYNE COUNTY

COLUMBUS-WOOSTER ROAD

I.C.H. No 24 PET. No 5/29. SEC D.

WAYNE & HOLMES COUNTIES

CLINTON RIPLEY TOWNSHIPS 1924.

We the Commissioners of Holmes County hereby approve these plans and certify that the right-of-way 60' wide is available for the construction, maintenance and repair of this improvement.

Signed [Signature]
L. B. Miller
[Signature]

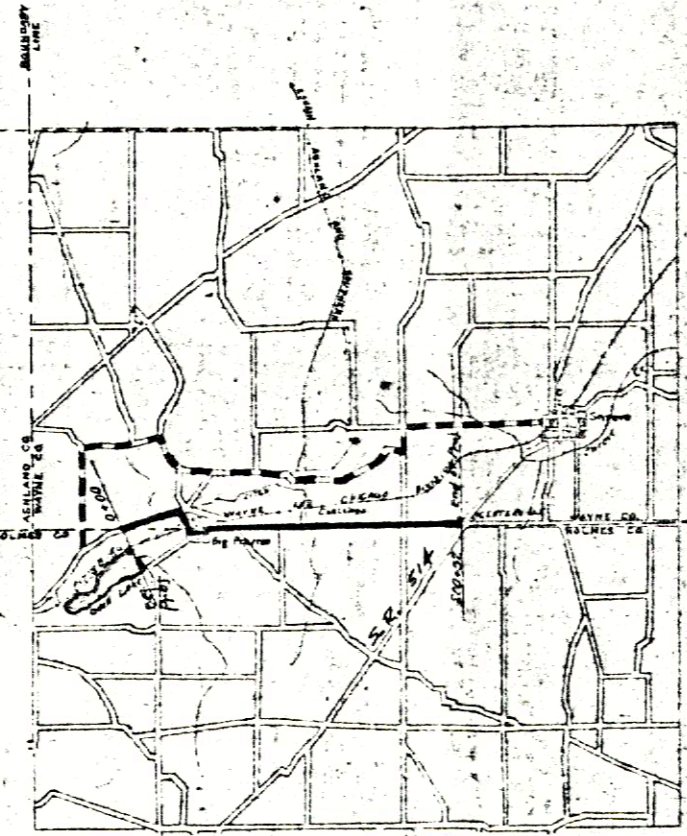
Date Sept. 27, 1924

We the Commissioners of Wayne County hereby approve these plans and certify that the right-of-way 60' wide is available for the construction, maintenance and repair of this improvement.

Signed [Signature]
[Signature]
A. R. [Signature]

Date Sept. 15, 1924

Section of Lower
of Upper [Signature]



LOCATION PLAN
SCALE OF MILES

Proposed improvement
Detours

SCALES
PLAN 1"=100 FT
PROFILE - VER. 1"=10 FT
PROFILE - HOR. 1"=100 FT
CROSS-SECTIONS 1"=5 FT

- CONVENTIONAL SIGNS
- COUNTY LINE
 - TOWNSHIP LINE
 - SECTION LINE
 - RAILROADS
 - DRIVES
 - FENCES
 - PROPERTY LINES
 - P. I. LOCATIONS

INDEX OF SHEETS

Sheet No.	Title Page
Sheet No. 1	Title Page
" " 2	Typical Cross-Section
Sheets No. 3 to 7	Alignment
" No. 8 to 15	Cross Section
" No. 16 and 17	Bridge Plans
Sheet No. 18	Summary

The Standard Specifications of the State of Ohio, Division of Highways in force on date of contract will govern this improvement.

I hereby approve these plans and declare that the making of this improvement will require the closing of the highway to traffic and that detours will be provided as shown on plans.

Approved [Signature]
Date 9-27-24 Res. Eng. Holmes County

Approved [Signature]
Date Oct. 10, 1924 Res. Eng. Wayne County

Approved [Signature]
Date 11-10-24 Division Engineer

Approved [Signature]
Date 11/25/24 State Highway Engineer

Approved [Signature]
Date 11/25/24 Director of Highways and Public Works

Recommended for Approval
Date _____ District Engineer
Bureau of Public Roads

Recommended for Approval
Date _____ Chief Engineer
Bureau of Public Roads

Date _____

Beginning of
Project Sta C+0

Earl D Alleman

$\Delta = 1^{\circ}-0' \text{ Rt}$
 $D = 1^{\circ}-0'$
 $T = 55.87'$
 $R = 5729.64'$
 $L = 113.33'$

1500c Newark Hrs.

Wm Porter

George Iseman
2.18A

1500c Newark Hrs.

$\Delta = 4^{\circ}-50' \text{ Rt}$
 $D = 0^{\circ}-30'$
 $T = 783'$
 $L = 966'$
 $R = 11459'$

Excavation 823 cu yds.
Fill + 15% 852 cu yds.
Borrow 29 cu yds.

Excavation 1197 cu yds.
Fill + 15% 1168 cu yds.
Waste 33 cu yds.

Excavation 1169 cu yds.
Fill + 15% 1198 cu yds.
Borrow 29 cu yds.

Excavation 2091 cu yds.
Fill + 15% 2054 cu yds.
Waste 7 cu yds.

Excavation 1352 cu yds.
Fill + 15% 1275 cu yds.
Borrow 23 cu yds.

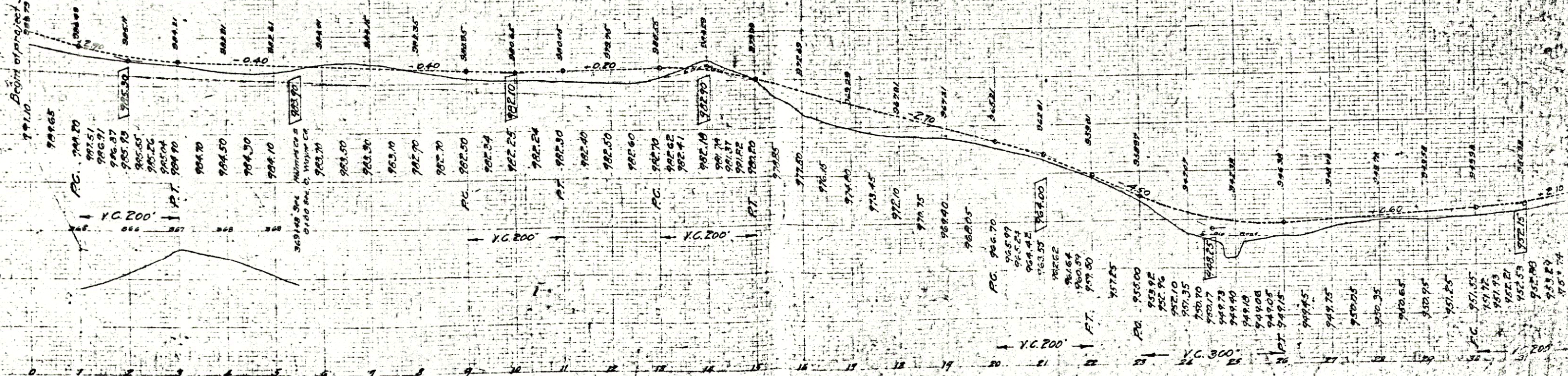
B.M. TWO NAILS IN ROOT
OF PEAR TREE N. SIDE OF
STA-2450. ELEV 995.89

B.M. NAIL IN HICKORY
27 FT. RT. OF STA. 2146
ELEVATION 994.82

B.M. TWO NAILS IN POPLAR
70 FT. RT. OF STA 21140
ELEVATION 454.03

B.M. NAIL IN SYCAMORE
100 FT. NORTH OF BRIDGE
ELEVATION 913.64

Begin of project Sta C+00
998.75

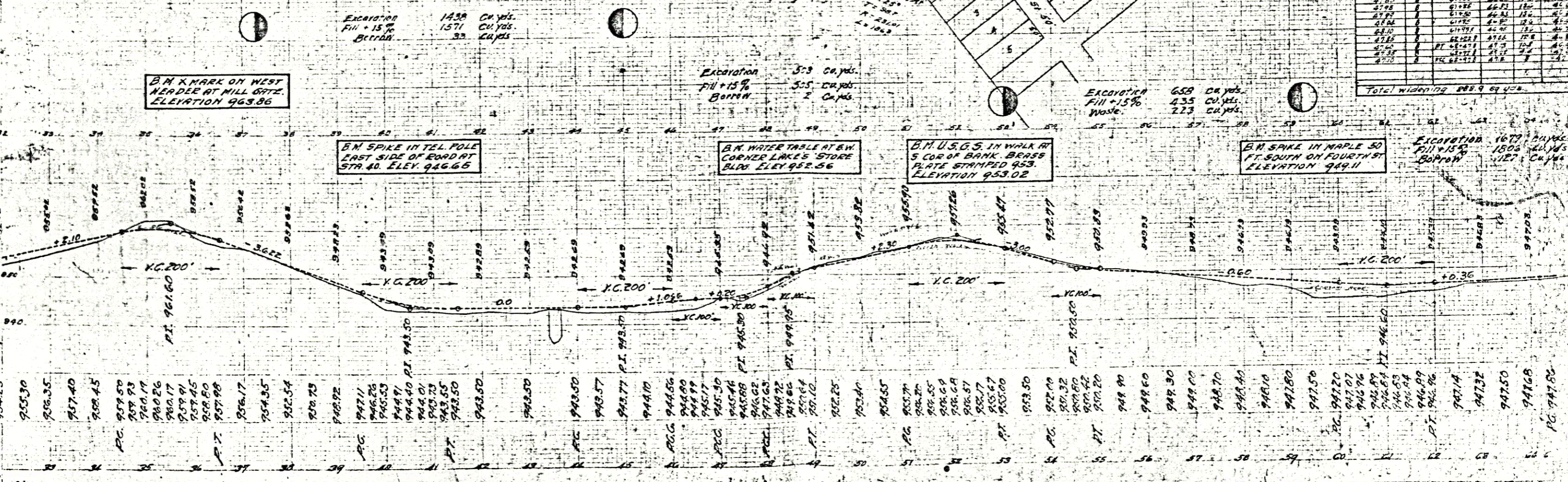
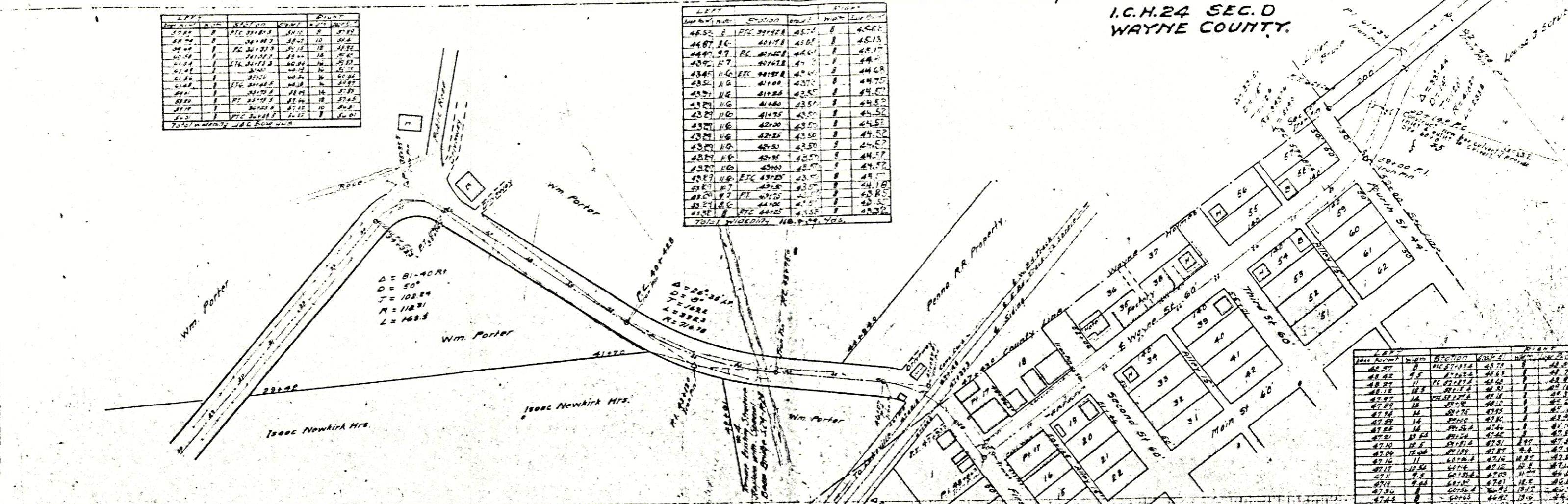


I.C.H. 24 SEC. D
WAYNE COUNTY.

LINE NO.	TYPE	STATION	CHANG.	PIVOT
4478	P.C.	391.88	54.12	8
4479	P.C.	391.88	54.12	10
4480	P.C.	391.88	54.12	15
4481	P.C.	391.88	54.12	18
4482	P.C.	391.88	54.12	20
4483	P.C.	391.88	54.12	25
4484	P.C.	391.88	54.12	30
4485	P.C.	391.88	54.12	35
4486	P.C.	391.88	54.12	40
4487	P.C.	391.88	54.12	45
4488	P.C.	391.88	54.12	50
4489	P.C.	391.88	54.12	55
4490	P.C.	391.88	54.12	60
4491	P.C.	391.88	54.12	65
4492	P.C.	391.88	54.12	70
4493	P.C.	391.88	54.12	75
4494	P.C.	391.88	54.12	80
4495	P.C.	391.88	54.12	85
4496	P.C.	391.88	54.12	90
4497	P.C.	391.88	54.12	95
4498	P.C.	391.88	54.12	100
4499	P.C.	391.88	54.12	105
4500	P.C.	391.88	54.12	110

LINE NO.	TYPE	STATION	CHANG.	PIVOT
4501	P.C.	391.88	54.12	115
4502	P.C.	391.88	54.12	120
4503	P.C.	391.88	54.12	125
4504	P.C.	391.88	54.12	130
4505	P.C.	391.88	54.12	135
4506	P.C.	391.88	54.12	140
4507	P.C.	391.88	54.12	145
4508	P.C.	391.88	54.12	150
4509	P.C.	391.88	54.12	155
4510	P.C.	391.88	54.12	160
4511	P.C.	391.88	54.12	165
4512	P.C.	391.88	54.12	170
4513	P.C.	391.88	54.12	175
4514	P.C.	391.88	54.12	180
4515	P.C.	391.88	54.12	185
4516	P.C.	391.88	54.12	190
4517	P.C.	391.88	54.12	195
4518	P.C.	391.88	54.12	200
4519	P.C.	391.88	54.12	205
4520	P.C.	391.88	54.12	210

LINE NO.	TYPE	STATION	CHANG.	PIVOT
4521	P.C.	391.88	54.12	215
4522	P.C.	391.88	54.12	220
4523	P.C.	391.88	54.12	225
4524	P.C.	391.88	54.12	230
4525	P.C.	391.88	54.12	235
4526	P.C.	391.88	54.12	240
4527	P.C.	391.88	54.12	245
4528	P.C.	391.88	54.12	250
4529	P.C.	391.88	54.12	255
4530	P.C.	391.88	54.12	260
4531	P.C.	391.88	54.12	265
4532	P.C.	391.88	54.12	270
4533	P.C.	391.88	54.12	275
4534	P.C.	391.88	54.12	280
4535	P.C.	391.88	54.12	285
4536	P.C.	391.88	54.12	290
4537	P.C.	391.88	54.12	295
4538	P.C.	391.88	54.12	300
4539	P.C.	391.88	54.12	305
4540	P.C.	391.88	54.12	310



B.M. X MARK ON WEST
HEADER AT MILL CRTZ.
ELEVATION 963.86

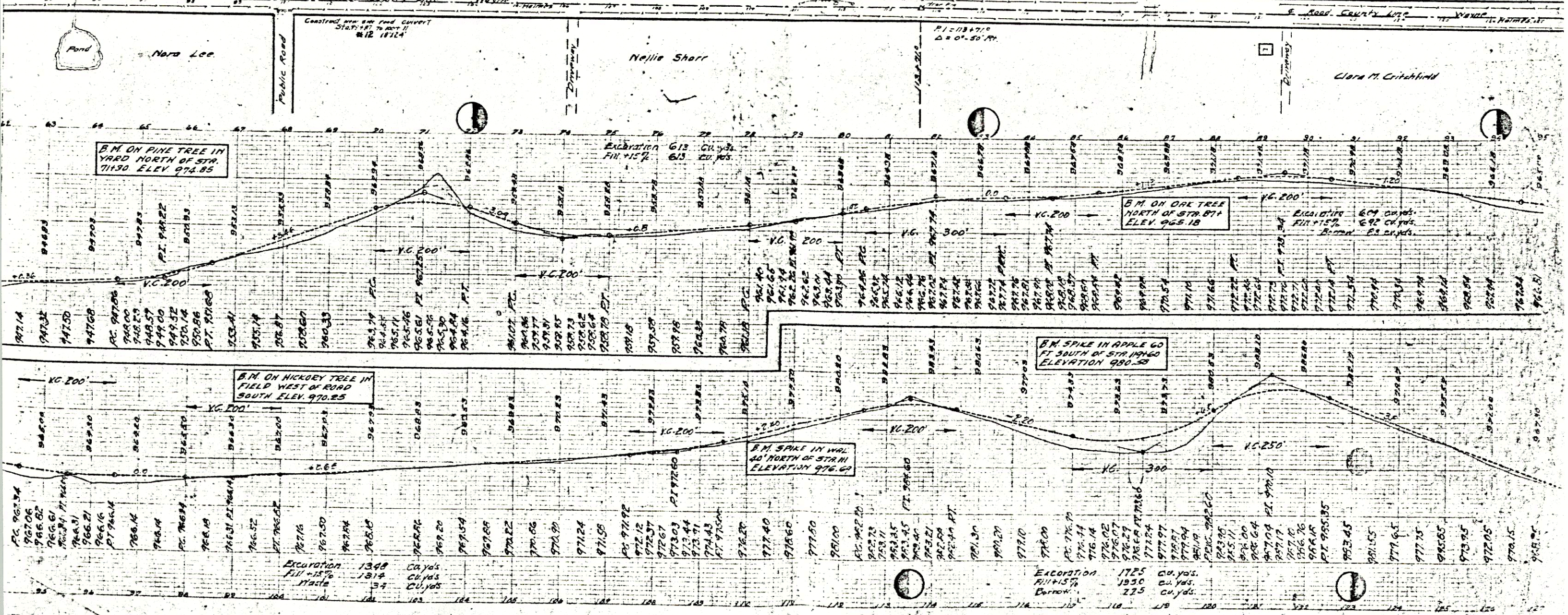
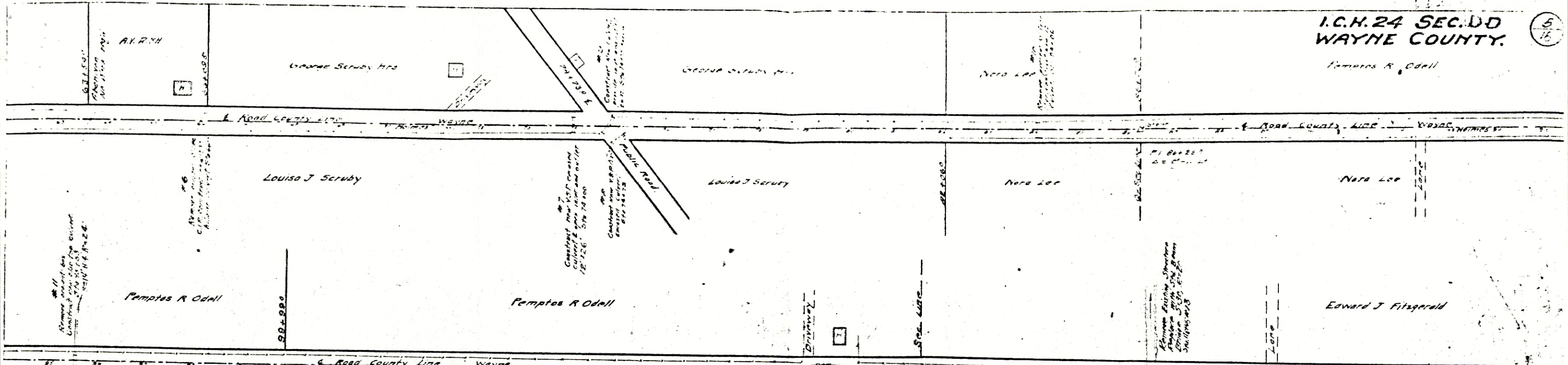
B.M. SPIKE IN TEL. POLE
EAST SIDE OF ROAD AT
STA. 40. ELEV. 946.65

B.M. WATER TABLE AT B.W.
CORNER LAKE'S STORE
BLDG. ELEV. 952.56

B.M. U.S.G.S. IN WALK AT
5 COR. OF BANK. BRASS
PLATE STAMPED 453.
ELEVATION 953.02

B.M. SPIKE IN MAPLE 50
FT. SOUTH ON FOURTH ST.
ELEVATION 949.11

Excavation 1679 cu. yds.
Fill + 15% Bottom 1502 cu. yds.



I.C.H.24 SEC.D
WAYNE COUNTY.

#14
Remain Excavation
Pit in lot 131
Clear lot 131

Edward J Fitzgerald

#15
Remain Excavation
Pit in lot 131
Clear lot 131

Dolores Brown

#16
Remain Excavation
Pit in lot 131
Clear lot 131

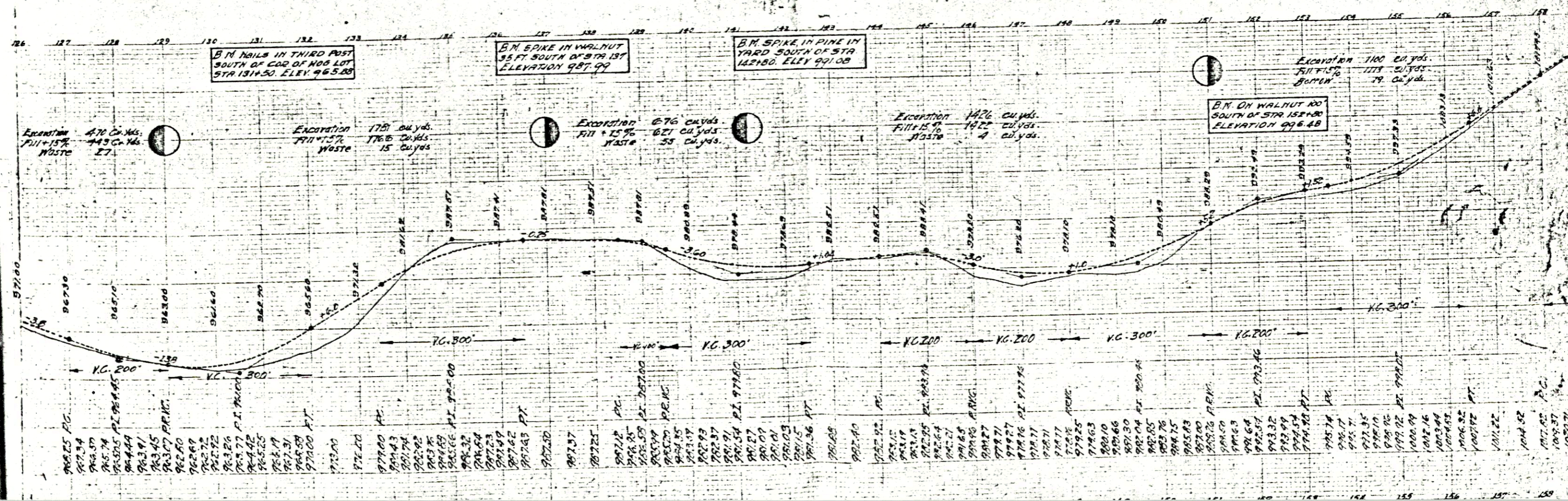
#17
Remain Excavation
Pit in lot 131
Clear lot 131

Lunda E & Isaac E McFadden

George Fitzgerald Hrs.

Fred Wachtel

Nathan Commern



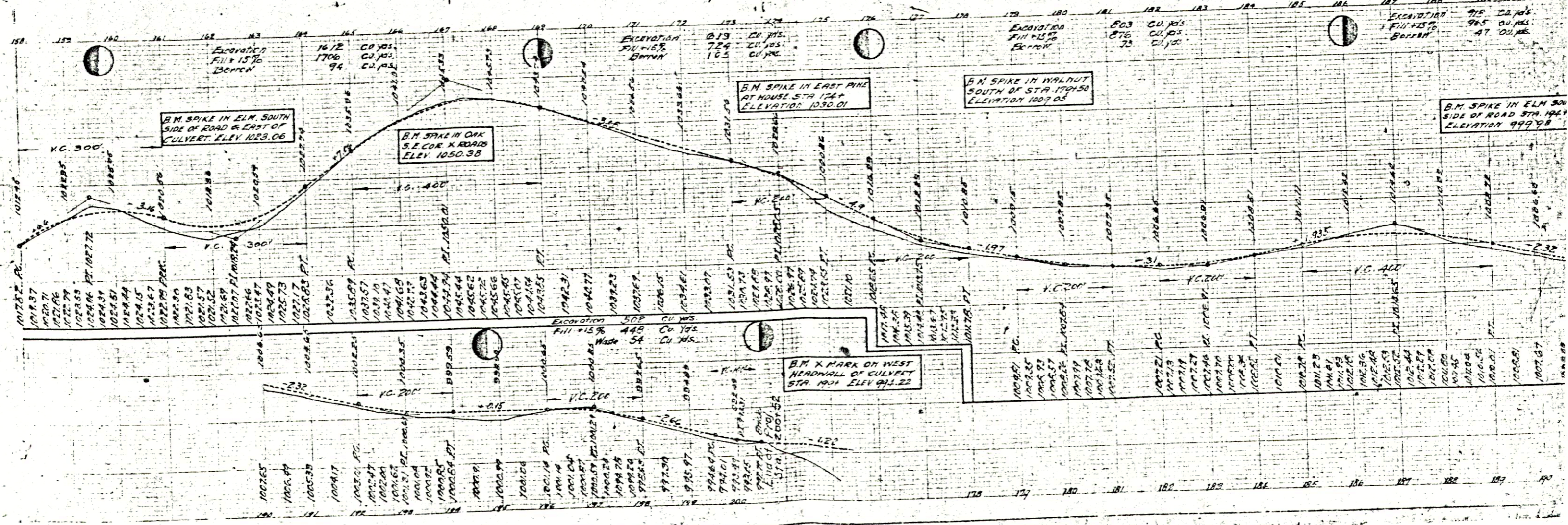
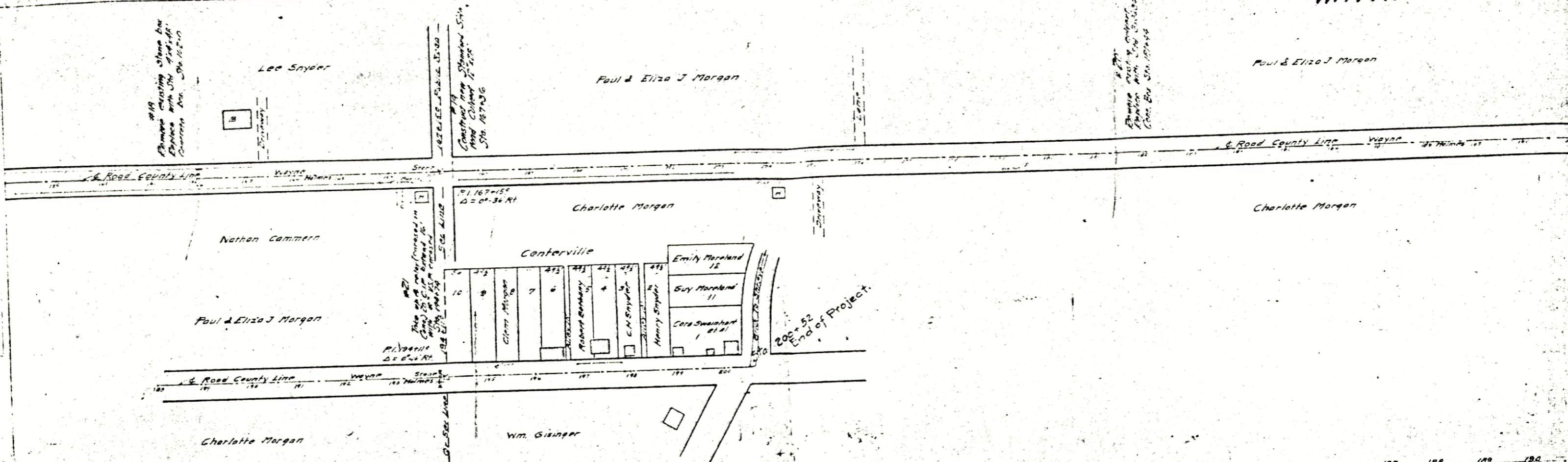
#19
Remove existing stone box
Replace with 30" dia. pipe
Concrete box Sta. 102+00

Lee Snyder

Paul & Eliza J Morgan

Paul & Eliza J Morgan

#21
Remove existing culvert
Replace with 30" dia. pipe
Concrete box Sta. 102+00



205+52
End of Project.

Excavation
Fill +15%
Bottom

Excavation
Fill +15%
Bottom

Excavation
Fill +15%
Bottom

Excavation
Fill +15%
Bottom

Excavation 508 Cu Yds
Fill +15% 448 Cu Yds
Waste 54 Cu Yds

B.M. X MARK ON WEST
HEADWALL OF CULVERT
STA 100+ ELEV 991.22

B.M. SPIKE IN ELM SOUTH
SIDE OF ROAD & EAST OF
CULVERT. ELEV 1023.06

B.M. SPIKE IN OAK
S.E. COR X ROADS
ELEV 1050.38

B.M. SPIKE IN EAST PINE
AT HOUSE STA 172+
ELEVATION 1030.01

B.M. SPIKE IN WALNUT
SOUTH OF STA 170+50
ELEVATION 1009.05

B.M. SPIKE IN ELM SOUTH
SIDE OF ROAD STA 194+
ELEVATION 999.98