

STATE OF OHIO DEPARTMENT OF HIGHWAYS GLENMONT-BRINKHAVEN ROAD

OHIO PROJECT
NO. S-506(1)

FED. RD. DIVISION	STATE	PROJECT	TYPE FUNDS
2	OHIO	S-506(1)	POST WAR



HOLMES COUNTY
COUNTY ROAD NO. 25 FASS 1217

COUNTY ROAD NO. 25 HOLMES COUNTY VILLAGE OF GLENMONT AND RICHLAND TOWNSHIP

LINE DATA

Begin Project and Municipal Sta. 0+00
 End Municipal Sta. 1+88
 Gross Length Municipal 188 Lin. Ft.
 Deduction: R.R. Crossing Sheet 3 54 Lin. Ft.
 Net Length Municipal 134 Lin. Ft. or 0.025 Mi.

 Begin Rural Sta. 1+88
 End Rural Sta. 253+94
 No Additions or Deductions
 Net Length Rural 25206 Lin. Ft. or 4.773 Mi.

 Net Length of Project S-506 (1) 25340 Lin. Ft. or 4.799 Mi.

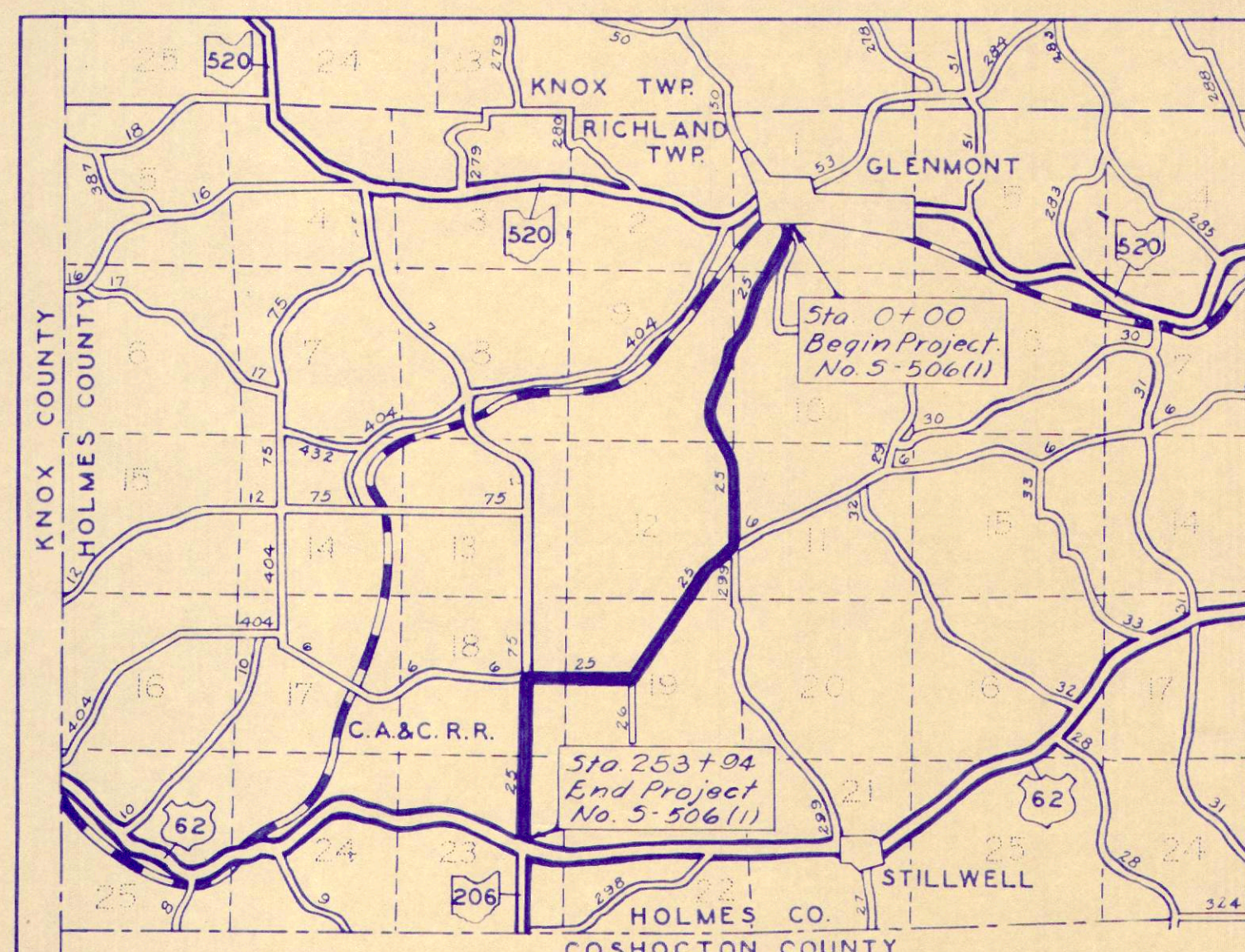
 Begin Work Sta. 0-360'
 End Work Sta. 253+94
 Net Length of Work 25754 Lin. Ft. or 4.877 Mi.

CONVENTIONAL SIGNS

STATE LINE _____
 COUNTY LINE _____
 TOWNSHIP LINE _____
 SECTION LINE _____
 CENTER LINE _____
 RIGHT-OF-WAY LINE _____
 STEAM RAIL ROAD _____

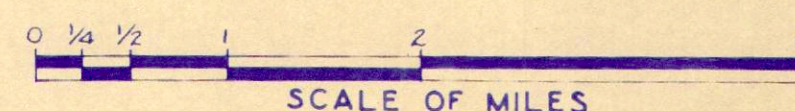
INDEX OF SHEETS

TITLE PAGE	SHEET 1
SUMMARY OF QUANTITIES	SHEET 2
TYPICAL SECTION AND CONSTRUCTION NOTES	SHEET 2
PLAN AND PROFILE	SHEETS 3-11



DELIVERY POINT: GLENMONT, OHIO AVERAGE HAUL: 2 MILES

LOCATION PLAN



PORTION TO BE IMPROVED

FEDERAL HIGHWAYS
 STATE HIGHWAYS
 OTHER HIGHWAYS

STANDARD DRAWINGS	
None	

SUPPLEMENTAL SPECIFICATIONS	
None	

WE, THE COMMISSIONERS OF HOLMES COUNTY, IN FORMAL SESSION HEREBY APPROVE THESE PLANS AND CERTIFY THAT THE NECESSARY RIGHT OF WAY IS AVAILABLE. WE AGREE TO MAINTAIN THE PROJECT IN A MANNER SATISFACTORY TO THE DIRECTOR OF HIGHWAYS, STATE OF OHIO, OR HIS DULY AUTHORIZED REPRESENTATIVES AND WILL MAKE AMPLE PROVISION EACH YEAR FOR SUCH MAINTENANCE.

DONE UNDER THE AUTHORITY OF SECTIONS 6906 ET SEQ. AND 7464 ET SEQ. OF THE GENERAL CODE OF OHIO.

BOARD OF COMMISSIONERS-HOLMES COUNTY

 DATE May 15 1950

THE STANDARD SPECIFICATIONS OF THE STATE OF OHIO DEPARTMENT OF HIGHWAYS, IN FORCE ON DATE OF CONTRACT, TOGETHER WITH SUPPLEMENTAL SPECIFICATIONS LISTED HEREON WILL GOVERN THIS IMPROVEMENT.

I HEREBY APPROVE THESE PLANS AND DECLARE THAT THE MAKING OF THIS IMPROVEMENT WILL NOT REQUIRE THE CLOSING TO TRAFFIC OF THE HIGHWAY AND THAT PROVISIONS FOR THE MAINTENANCE AND SAFETY OF TRAFFIC WILL BE AS SET FORTH ON THE PLANS AND ESTIMATES.

APPROVED _____
 DATE May 15 1950 COUNTY ENGINEER

APPROVED _____
 DATE _____ RESIDENT DIVISION DEPUTY DIRECTOR

APPROVED _____
 DATE _____ CHIEF ENGR. BUREAU OF BRIDGES & R.R. CROSSINGS

APPROVED _____
 DATE _____ CHIEF ENGR. BUREAU OF LOCATION & DESIGN

APPROVED _____
 DATE _____ 1ST ASST. DIRECTOR AND CHIEF ENGINEER

APPROVED _____
 DATE 8-14-50 DIRECTOR OF HIGHWAYS

DEPARTMENT OF COMMERCE
BUREAU OF PUBLIC ROADS

RECOMMENDED FOR APPROVAL:

 DISTRICT ENGINEER DATE

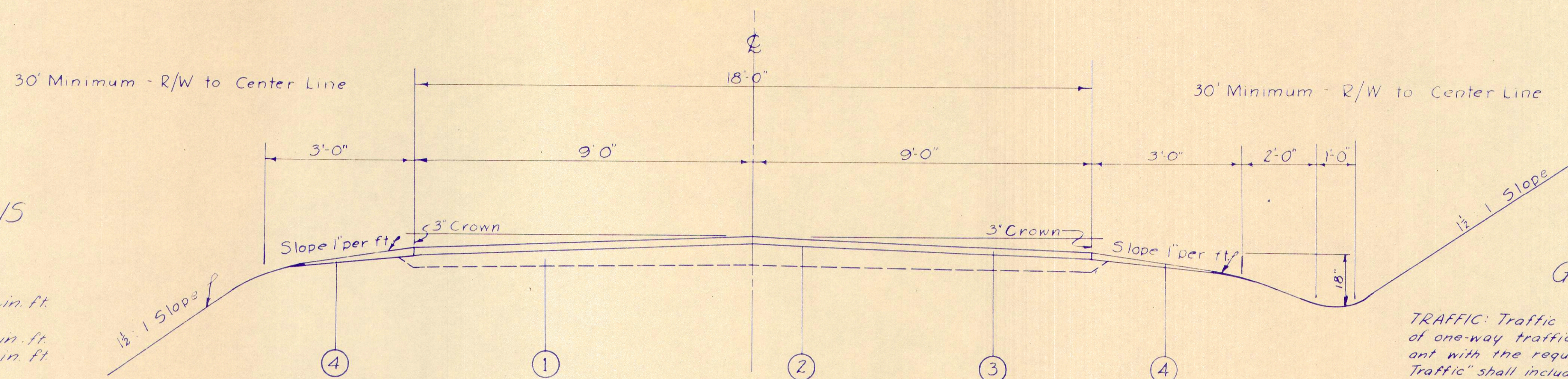
APPROVED:

 DIVISION ENGINEER DATE

FILE HOLMES COUNTY CO. RD. NO. 25
 NO. DATE OF LETTING _____
 CONTRACT NO. _____

TYPICAL SECTION

TYPE T-32 METHOD "A" OR "B"



PAVEMENT CALCULATIONS

Begin Sta 0+00
End Sta 253+94
Gross Length 25,394 Lin. Ft.
Deduction:
Railroad Sta. 1+16 to Sta 1+10 54 Lin. Ft.
Net Length 25,340 Lin. Ft.
Area (25,340 x 18) - 9 = 50,680 Sq. Yds.
Intersections 49 + 362 + 532 = 943 Sq. Yds.
Total Area 51,623 Sq. Yds.

T-30 BITUMINOUS PRIME COAT
51,623 x 0.40 = 20,650 Gal.

T-32 BITUMINOUS ROAD MIX SURFACE COURSE

No. 34 Aggregate 51,623 x 0.07 = 3,614 Cu. Yd.
Bitum. Material 51,623 x 1.30 = 67,110 Gal.

T-32 BITUMINOUS SEAL COAT

No. 6 Cover Agg. 51,623 x 0.0075 = 388 Cu. Yd.
No. 6 Choke Agg. 51,623 x 0.00375 = 194 Cu. Yd.
Bitum. Material 51,623 x 0.35 = 18,068 Gal.

Sta	5' L.T.E	5' R.T.E	9' L.T.E	9' R.T.E
10+00	10"			8"
20+00		8"	7"	
30+00	8"			3"
40+00		10"	8"	
50+00	5"			5"
60+00		8"	5"	
70+00	9"			5"
80+00		9"	5"	
90+00	10"			10"
100+00		9"	4"	
110+00	7"			5"
120+00	7"			4"
130+00		7"	5"	
140+00	8"			5"
150+00		7"	4"	
160+00	7"			5"
170+00		7"	5"	
180+00	7"			4"
190+00		6"	7"	
200+00	7"			5"
210+00		6"	5"	
220+00	6"			3"
230+00		7"	6"	
240+00	7"			6"
250+00		7"	6"	

GENERAL NOTES

TRAFFIC: Traffic shall be maintained at all times. The length of one-way traffic zones shall be kept to a minimum consistent with the requirements of safety. The item of "Maintaining Traffic" shall include furnishing of lights, signs, barricades, and watchmen necessary to secure the flow of traffic twenty four (24) hours daily.

SUPERELEVATED CURVES: Superelevated curves shall be built without crowns. The crown shall be worked out of the pavement in that portion between the beginning of the transition and the point where the superelevation equals twice the crown.

PROFILE: The profile of the proposed surface course shall be approximately 2" above that of the existing pavement.

BITUMINOUS MATERIAL FOR ROAD MIX: The quantity of bituminous material estimated for the road mix has been calculated for use with gravel or stone aggregate. If the Contractor elects to use slag aggregate, the bituminous material for the road mix surface course shall be applied at the rate of 15 gal. per square yard, which will require a total quantity of approximately 77,435 gallons. Payment will be made on final measurements.

All locations with a non-passing sight distance of less than 240 feet shall be marked with adequate warning signs, furnished, erected and maintained by the county.

ADVANCE RAILROAD WARNING SIGNS: Advance Railroad Warning Signs shall be similar to State of Ohio Code No. W-1-R.

RAILROAD CROSSING: The new surface course shall be feathered to meet the rail grades if necessary. The crown shall be worked out of the pavement beginning 50 feet each side of the railroad crossings by raising the edge of the pavement to meet the rail elevations.

DESIGN SPEED: Design speed is 35 MPH.

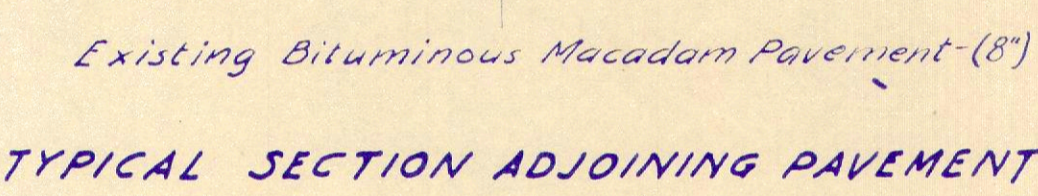
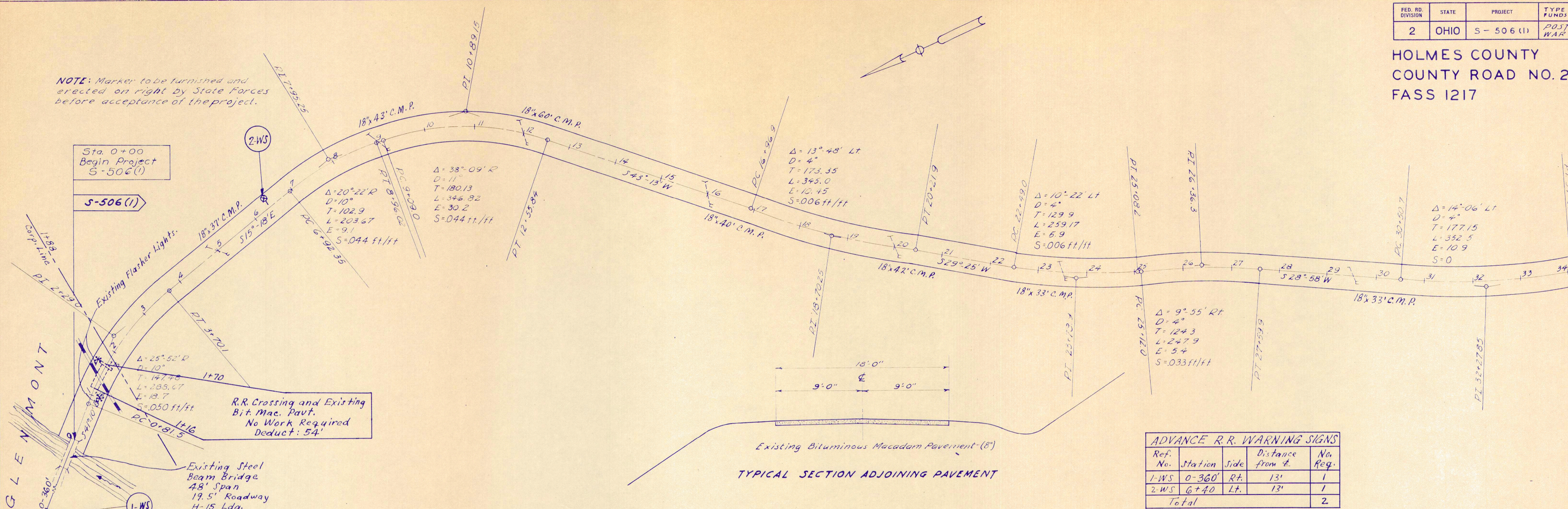
WEAK BASE AREAS: The County Maintenance Forces, in advance of the surfacing of this project, will add sufficient material to all weak base areas to provide a 6" minimum base thickness throughout the length of the project.

- ① Existing Traffic Bound Surface Course - Average Thickness 6 In
- ② T-30 Bituminous Prime Coat using 0.40 gal. Sec. M-5.7 RT-2 or 3 per sq. yd.
- ③ T-32 Bituminous Road Mix Surface Course, Method A or B, using 0.07 cu. yd. of No. 34 Aggregate and 130 gal. Sec. M-5.7 RT-7, 8 or 9 per square yard. Bituminous Seal Coat using 0.00375 cu. yd. No. 6 Aggregate for choke and 0.35 gal. Sec. M-5.7 RT-8 or 9 and 0.0075 cu. yd. No. 6 Aggregate per sq. yd. for cover.
- ④ The County shall construct the berms and ditches substantially as shown on the Typical Section and in such a manner as to provide satisfactory drainage. The work shall be performed immediately after the bituminous road mix surface course is placed and prior to acceptance by the Bureau of Public Roads.

CODE TYPE	QUANTITY	UNIT	DESCRIPTION
4231	SUMMARY		
T-30	20,650	Gal.	Bituminous Prime Coat Sec. M-5.7 RT-2 or 3
T-32	3,614	Cu. Yd.	No. 34 Aggregate For Road Mix
T-32	67,110	Gal.	Road Mix Bituminous Material. Sec. M-5.7 RT-7, 8 or 9
T-32	582	Cu. Yd.	No. 6 Aggregate For Choke and Seal Coat
T-32	18,068	Gal.	Seal Coat Bituminous Material. Sec. M-5.7 RT-8 or 9
ROADWAY			
Special	2	Each	Reflectorized Advance Railroad Warning Signs, furnish and Erect.
	Lump Sum	Lump Sum	Maintaining Traffic - Including Lights, Signs, Barricades & Watchman 24 Hours Daily.

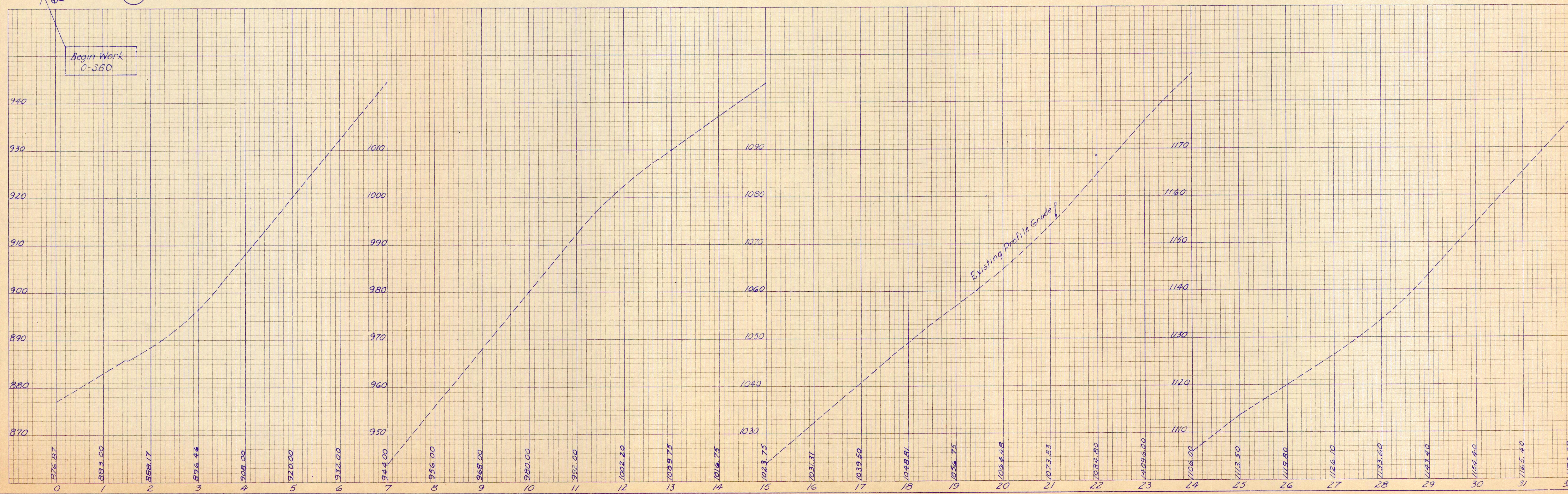
HOLMES COUNTY
COUNTY ROAD NO. 25
FASS 1217

NOTE: Marker to be furnished and erected on right by State forces before acceptance of the project.



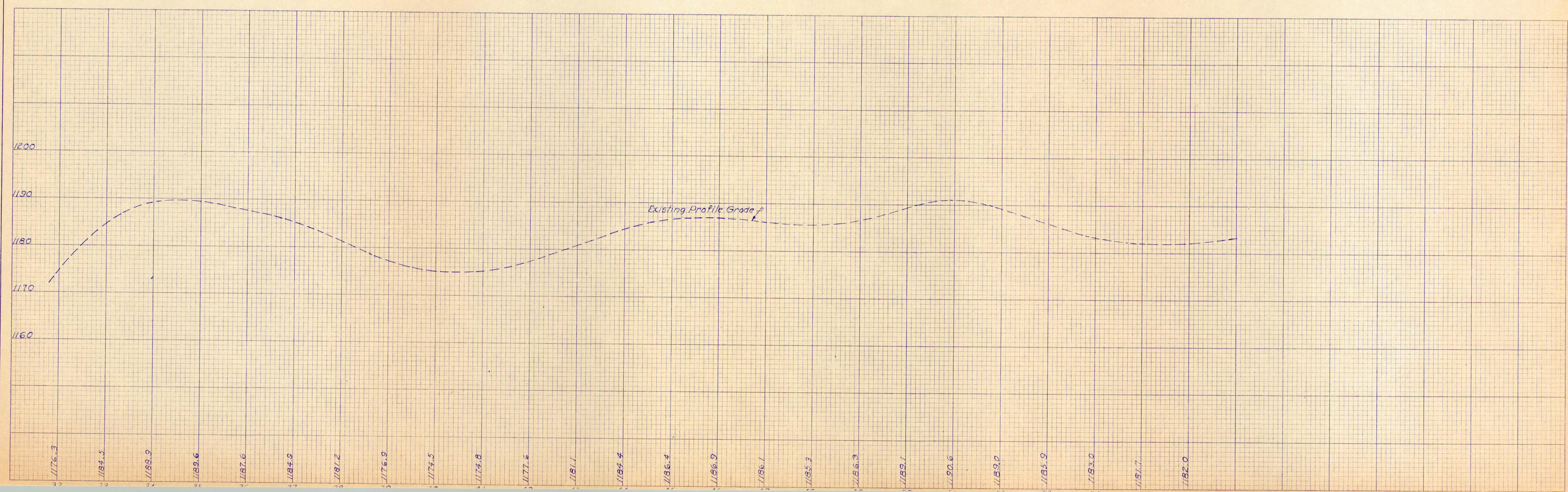
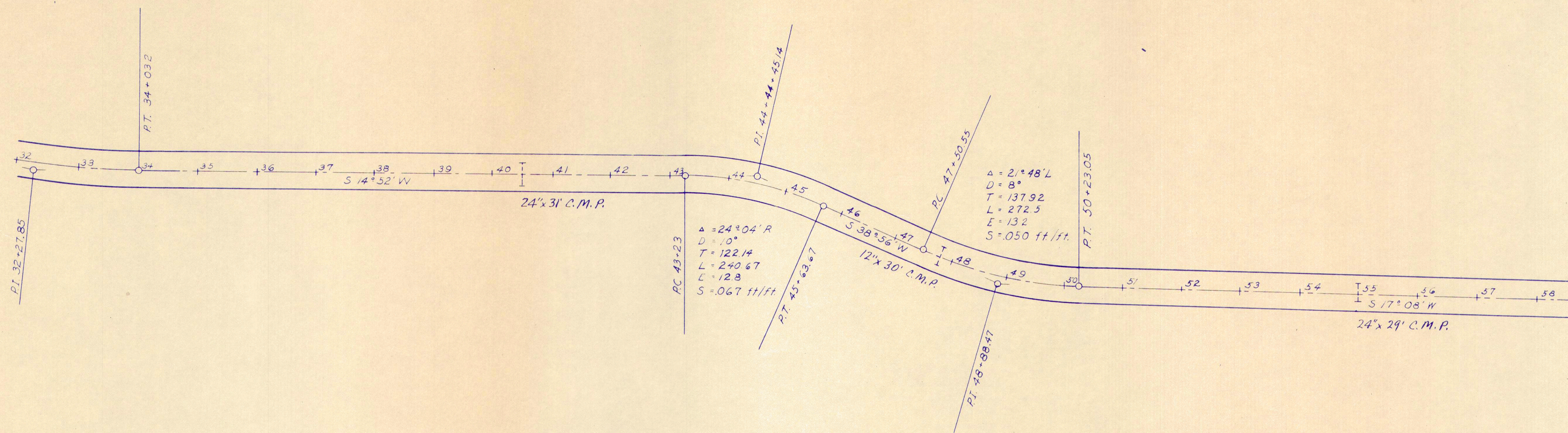
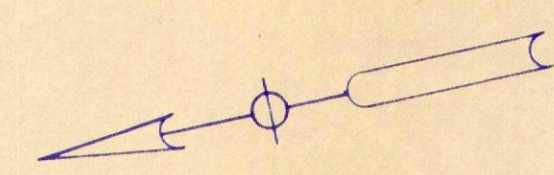
ADVANCE R.R. WARNING SIGNS

Ref. No.	Station	Side	Distance from \pm	No. Req.
1-WS	0-360'	Rt.	13'	1
2-WS	G+40	Lt.	13'	1
Total				2



FED. RD. DIVISION	STATE	PROJECT	TYPE FUNDS
2	OHIO	S-506(1)	POST WAR

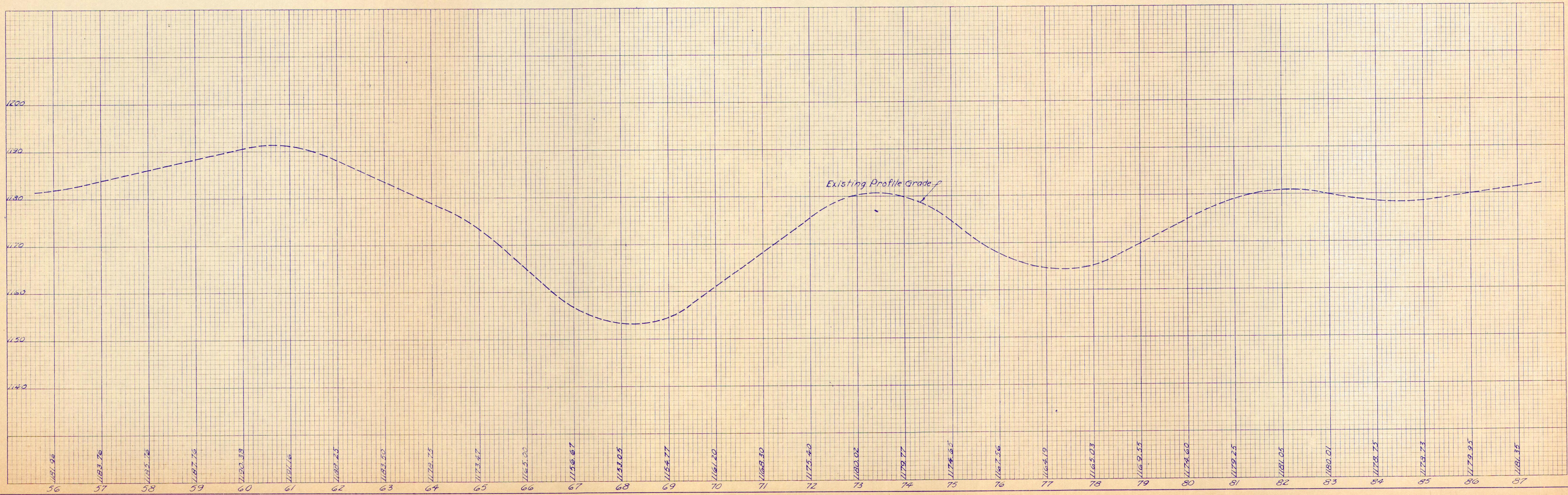
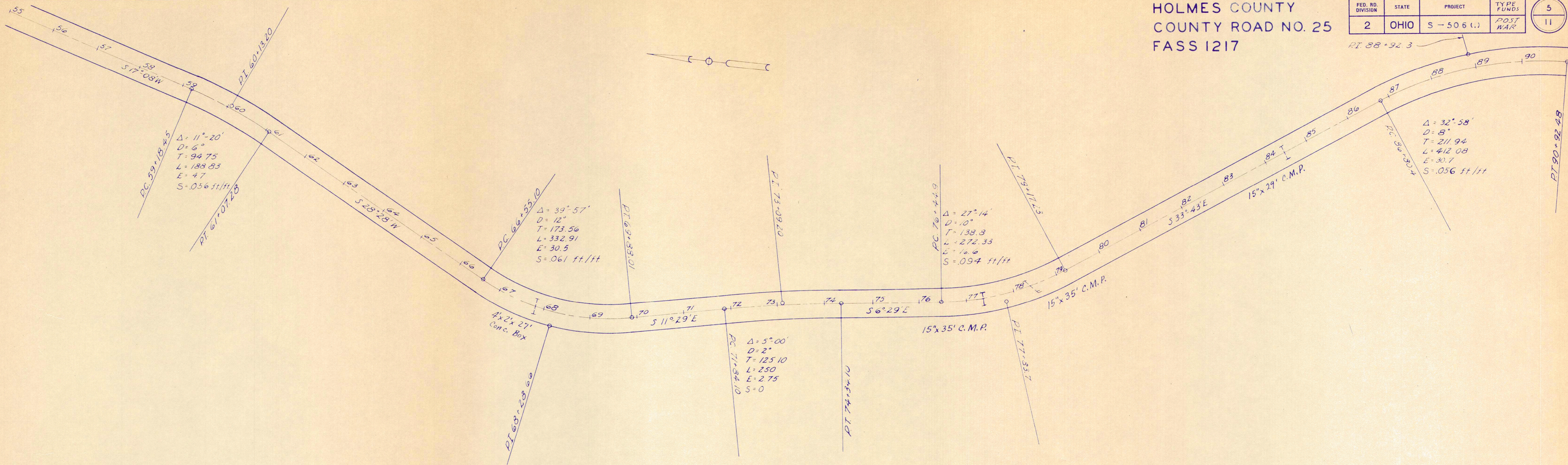
HOLMES COUNTY
COUNTY ROAD NO. 25
FASS 1217



HOLMES COUNTY
 COUNTY ROAD NO. 25
 FASS 1217

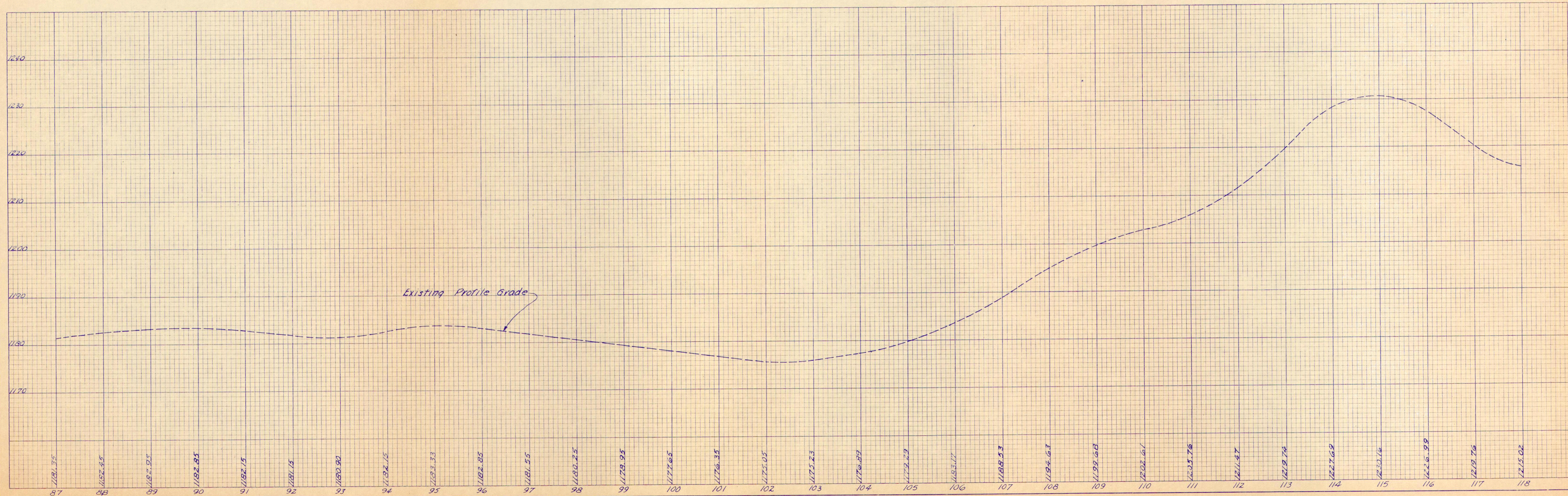
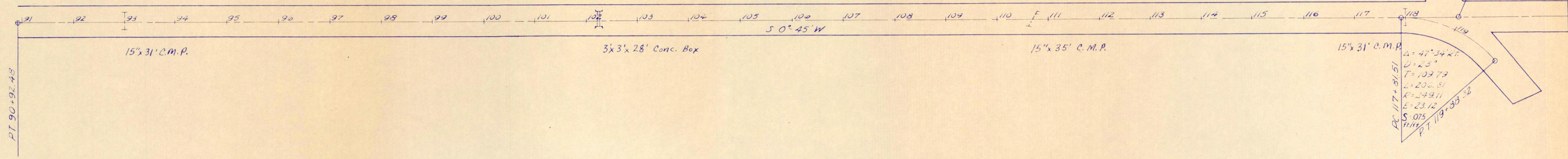
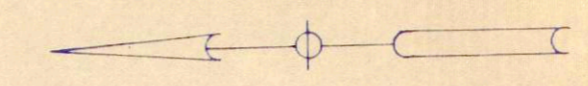
FED. RD. DIVISION	STATE	PROJECT	TYPE FUNDS
2	OHIO	S-506 (.)	POST WAR

5
11

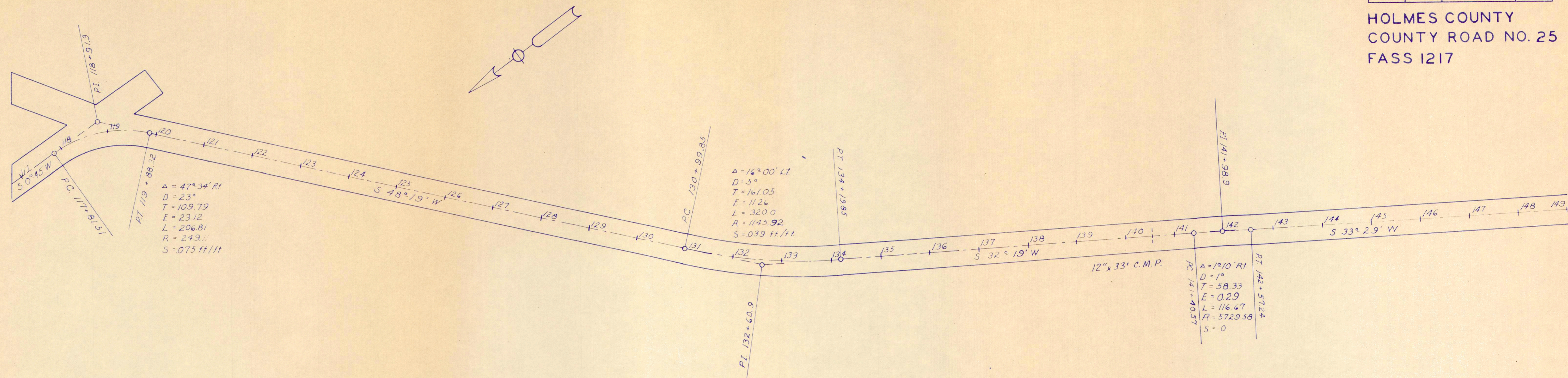


HOLMES COUNTY
 COUNTY ROAD NO. 25
 FASS 1217

FED. RD. DIVISION	STATE	PROJECT	POST MILE	6
2	OHIO	S - 506 (1)	POST MILE	11



HOLMES COUNTY
COUNTY ROAD NO. 25
FASS 1217



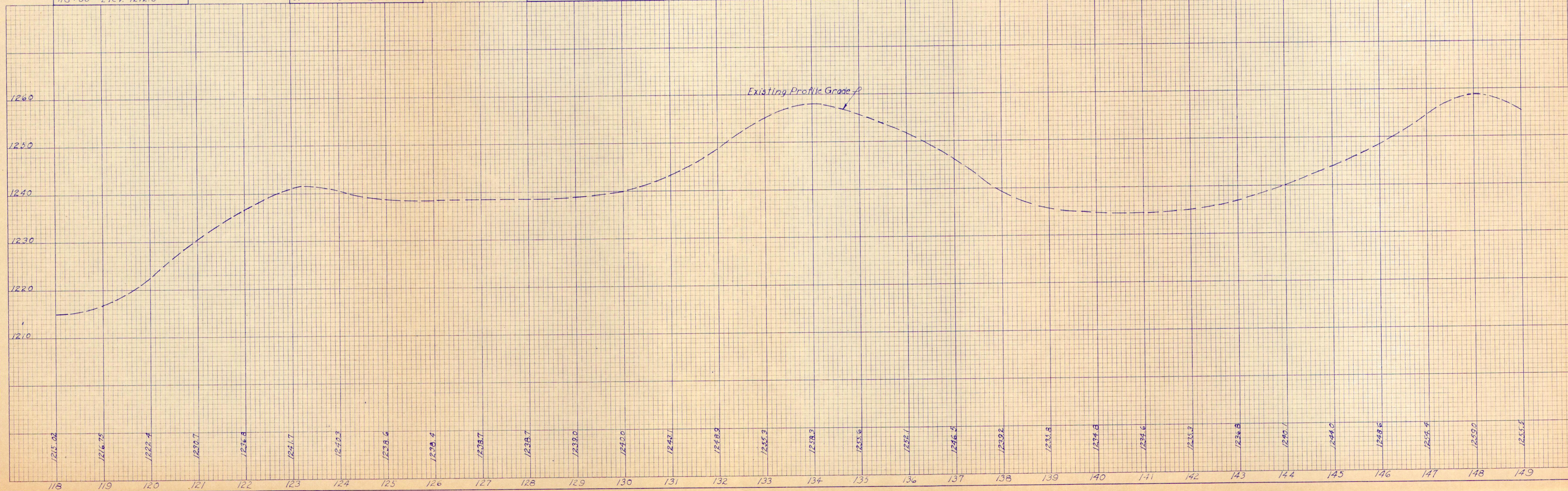
B.M. Invert of west end of Corr Pipe, Rt of Sta 118+00 Elev 1212.5

B.M. X in top of west headwall of Culvert Rt of Sta 118+00 Elev 1212.1

B.M. RR Spike in Roof of W. Cherry Rt of Sta 123+30 Elev 1243.35

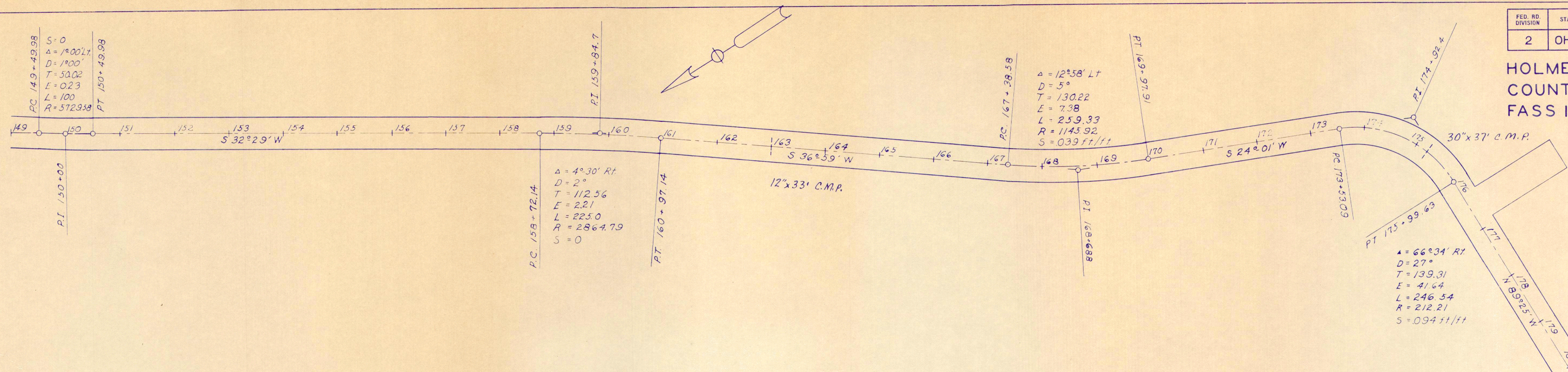
B.M. RR Spike in 12" Walnut To Lt. of Sta 134+79 Elev 1237.64

B.M. Spike in Corner Fence Post to Rt. of Sta 147+64 Elev 1258.57



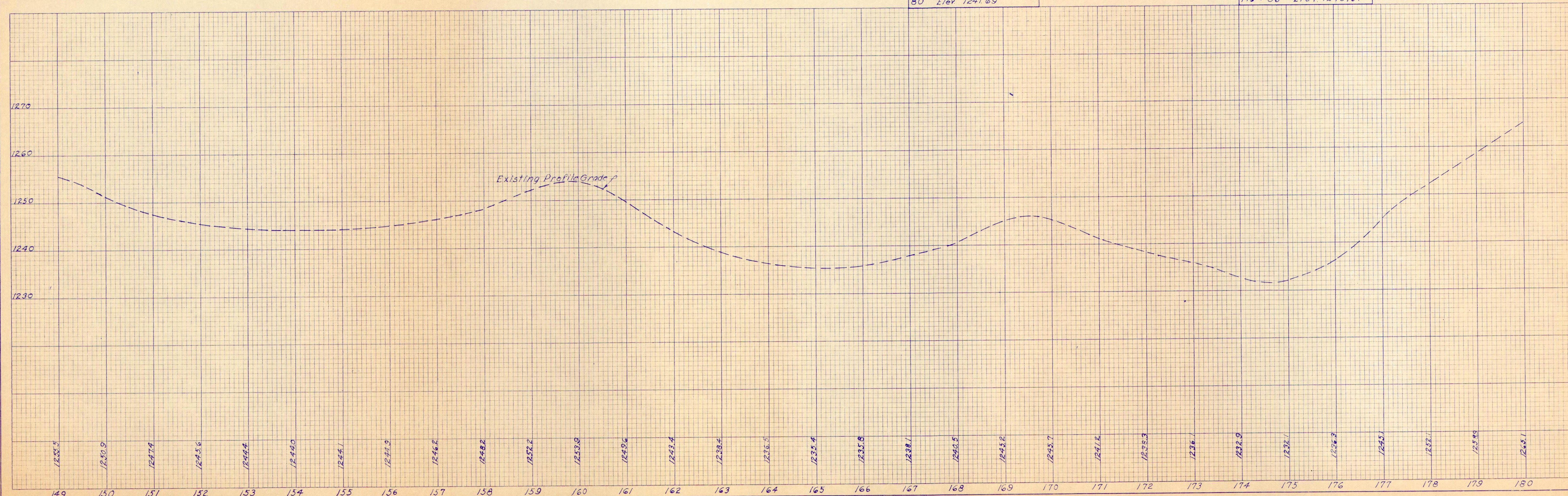
FED. RD. DIVISION	STATE	PROJECT	TYPE FUNDS
2	OHIO	S-506(1)	POST WAR

HOLMES COUNTY
COUNTY ROAD NO. 25
FASS 1217



B.M. Spike in 36" Beech
to left of Sta. 167+
80 Elev. 1241.69

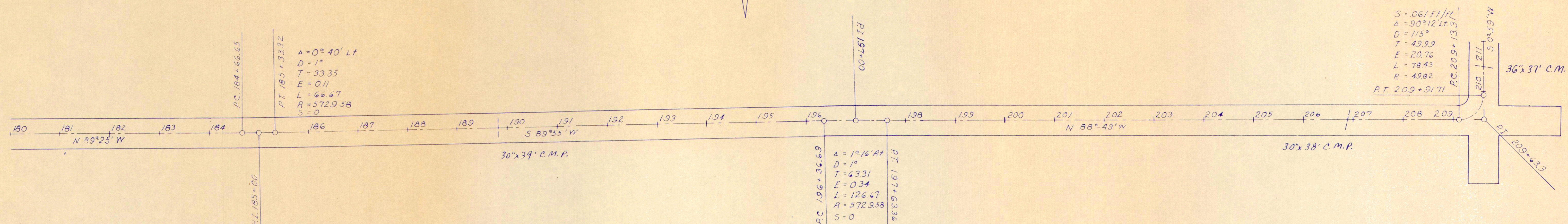
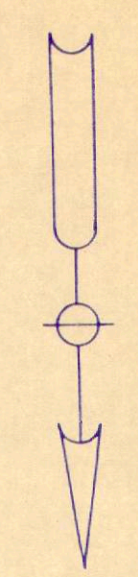
B.M. Spike in root of
36" Elm to left of Sta.
176+36 Elev. 1240.64



FED. RD. DIVISION	STATE	PROJECT	TYPE FUNDS
2	OHIO	S-506 (1)	POST WAR

9
11

HOLMES COUNTY
COUNTY ROAD NO. 25
FASS 1217

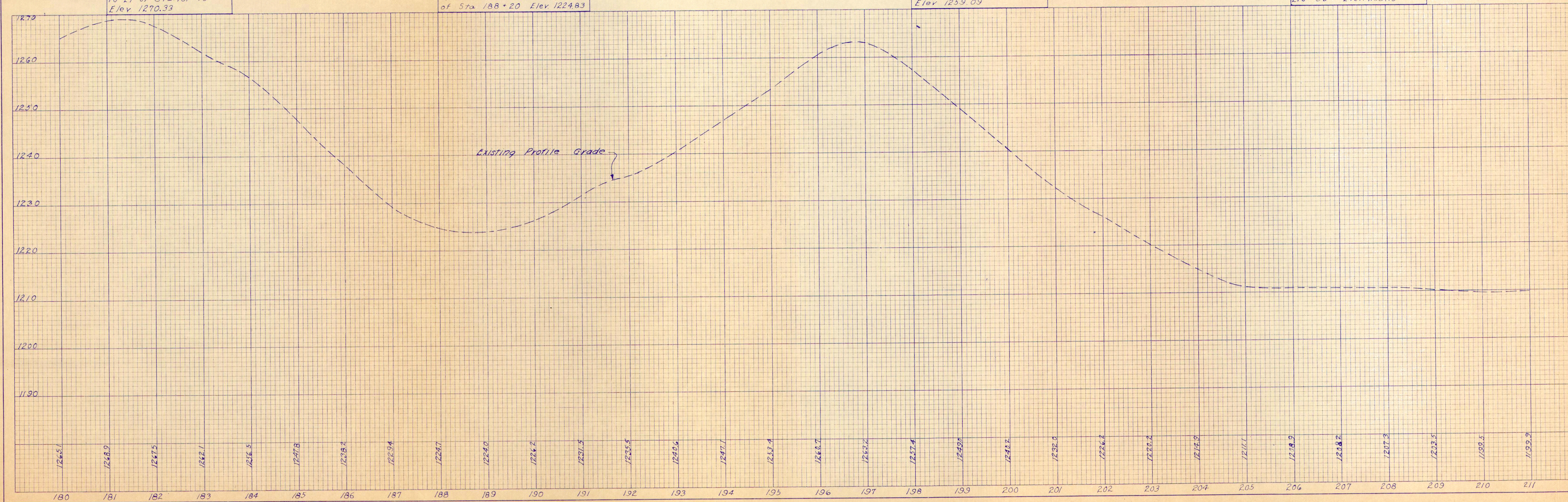


B.M. Spike in Power Pole
to Lt of Sta 181+15
Elev 1270.33

B.M. S.W. Cor. of W. headwall
of culvert for drive to Lt.
of Sta 188+20 Elev 1224.83

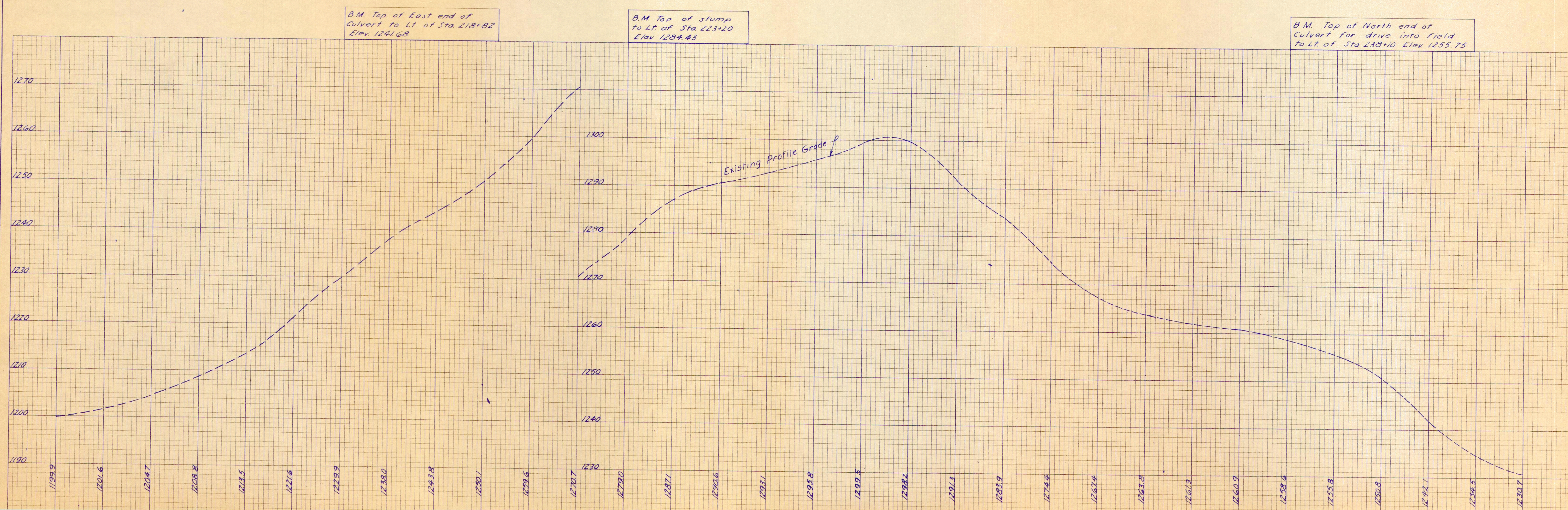
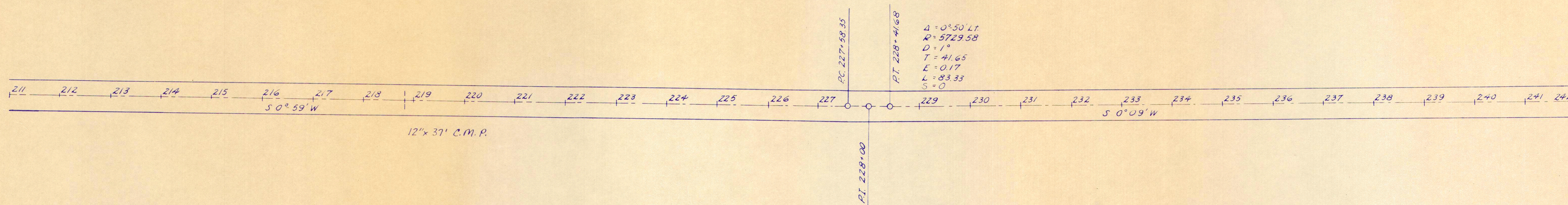
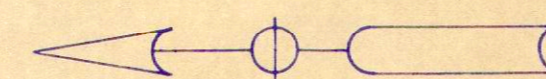
B.M. Spike in Power Pole
to Lt of Sta 198+20
Elev 1259.09

B.M. Top of east end
of Culvert to Lt. of Sta.
210+50 Elev 1199.19



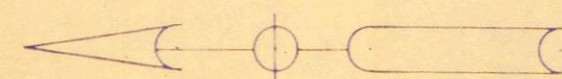
FED. RD. DIVISION	STATE	PROJECT	TYPE FUNDS	10
2	OHIO	S - 506 (1)	POST WAR	11

HOLMES COUNTY
COUNTY ROAD NO. 25
FASS 1217



FED. RD. DIVISION	STATE	PROJECT	TYPE FUNDS
2	OHIO	S - 506 (1)	POST WAR

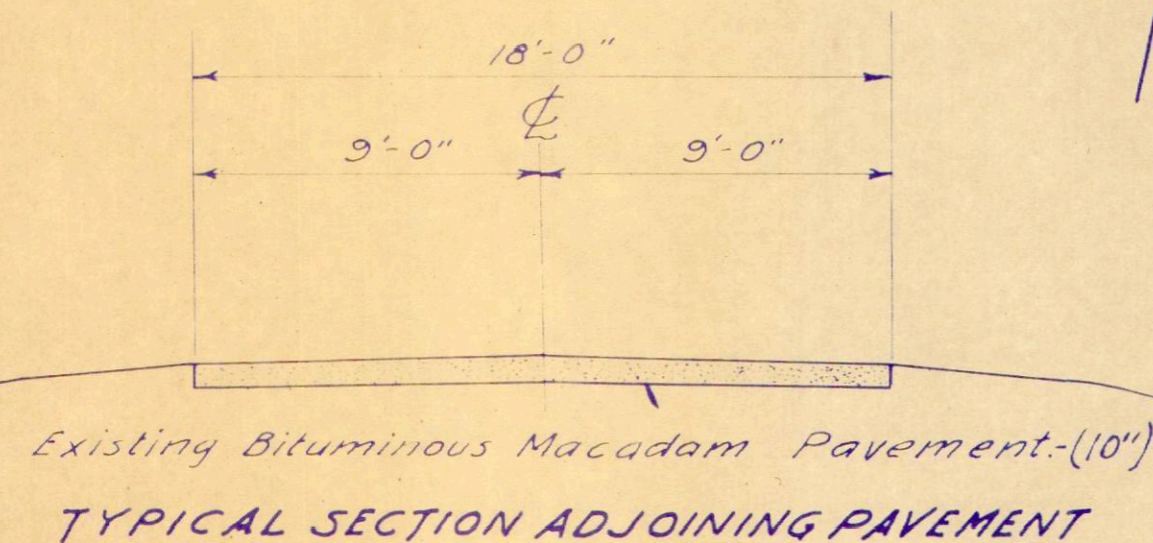
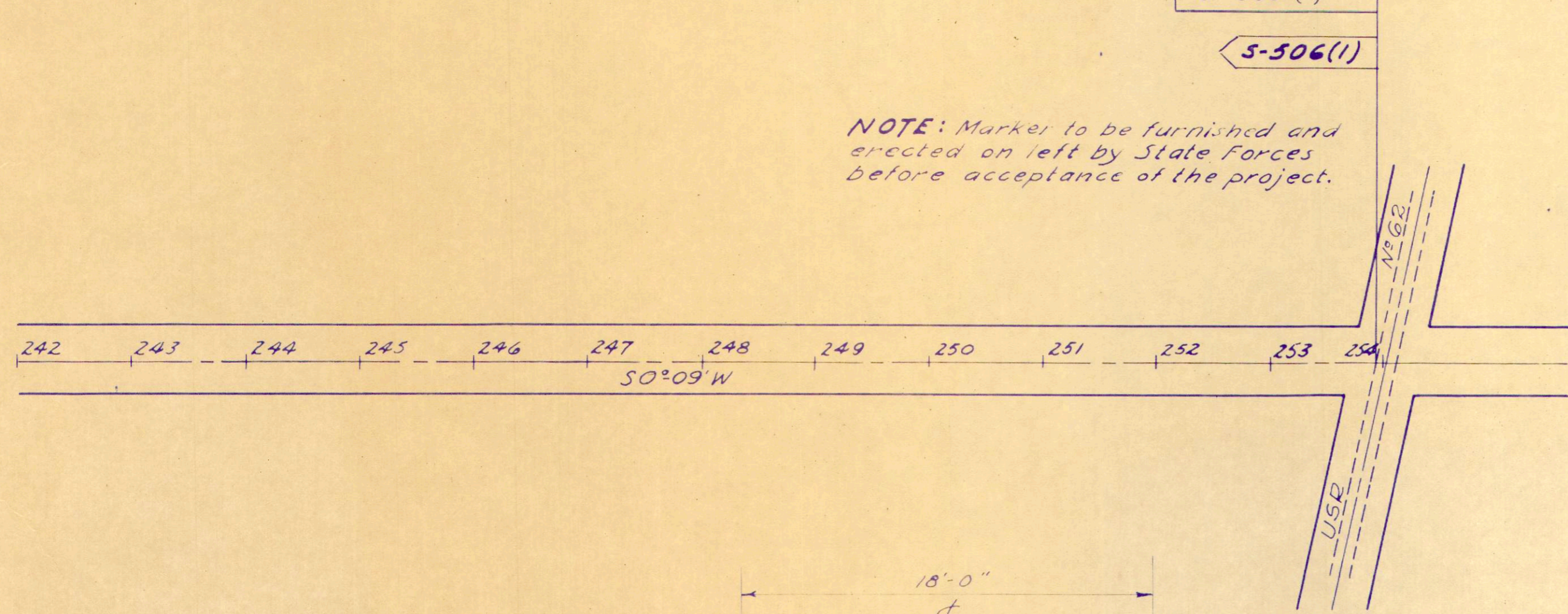
HOLMES COUNTY
COUNTY ROAD NO. 25
FASS 1217



Sta. 253+94
End Project Work
S-506 (1)

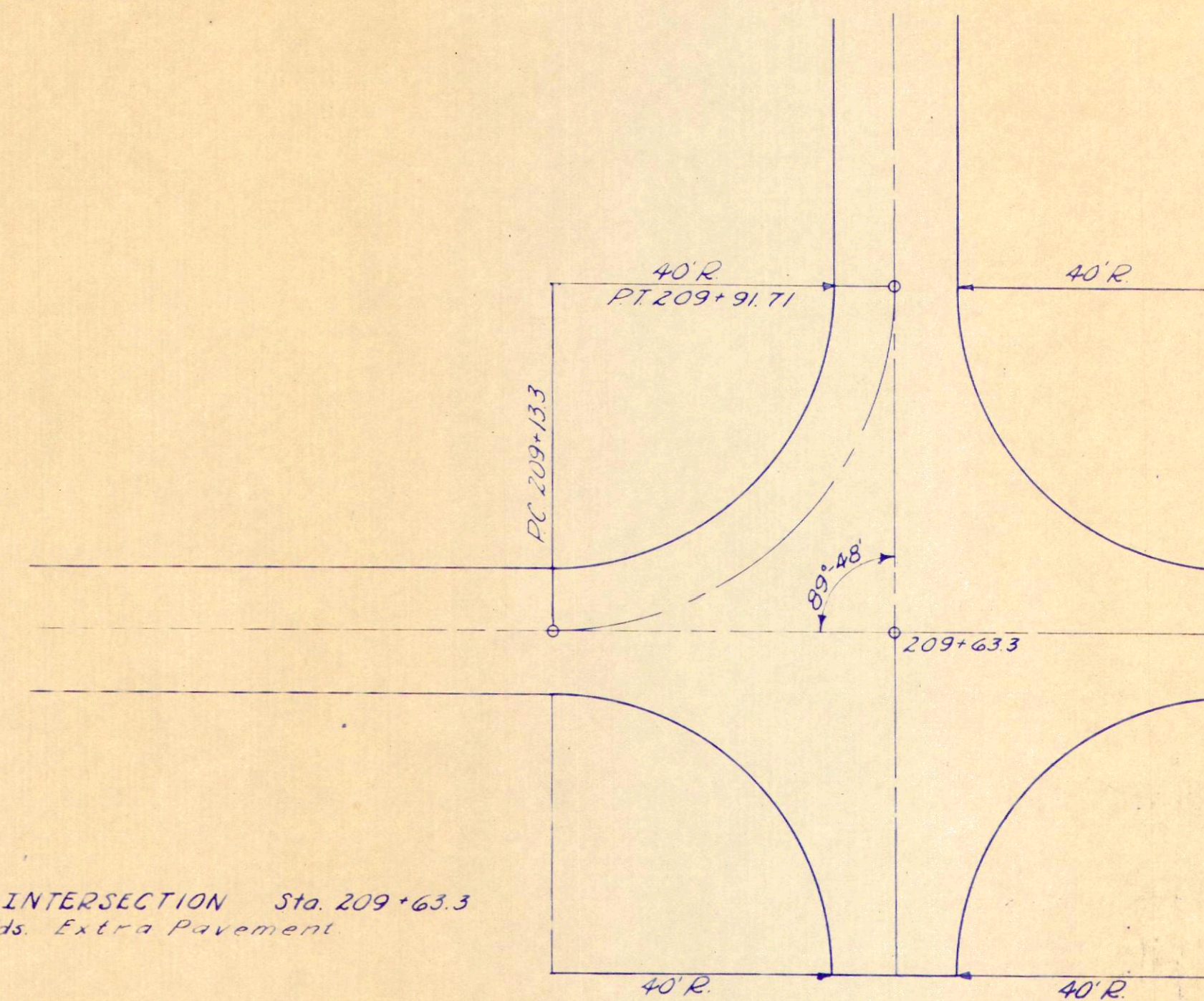
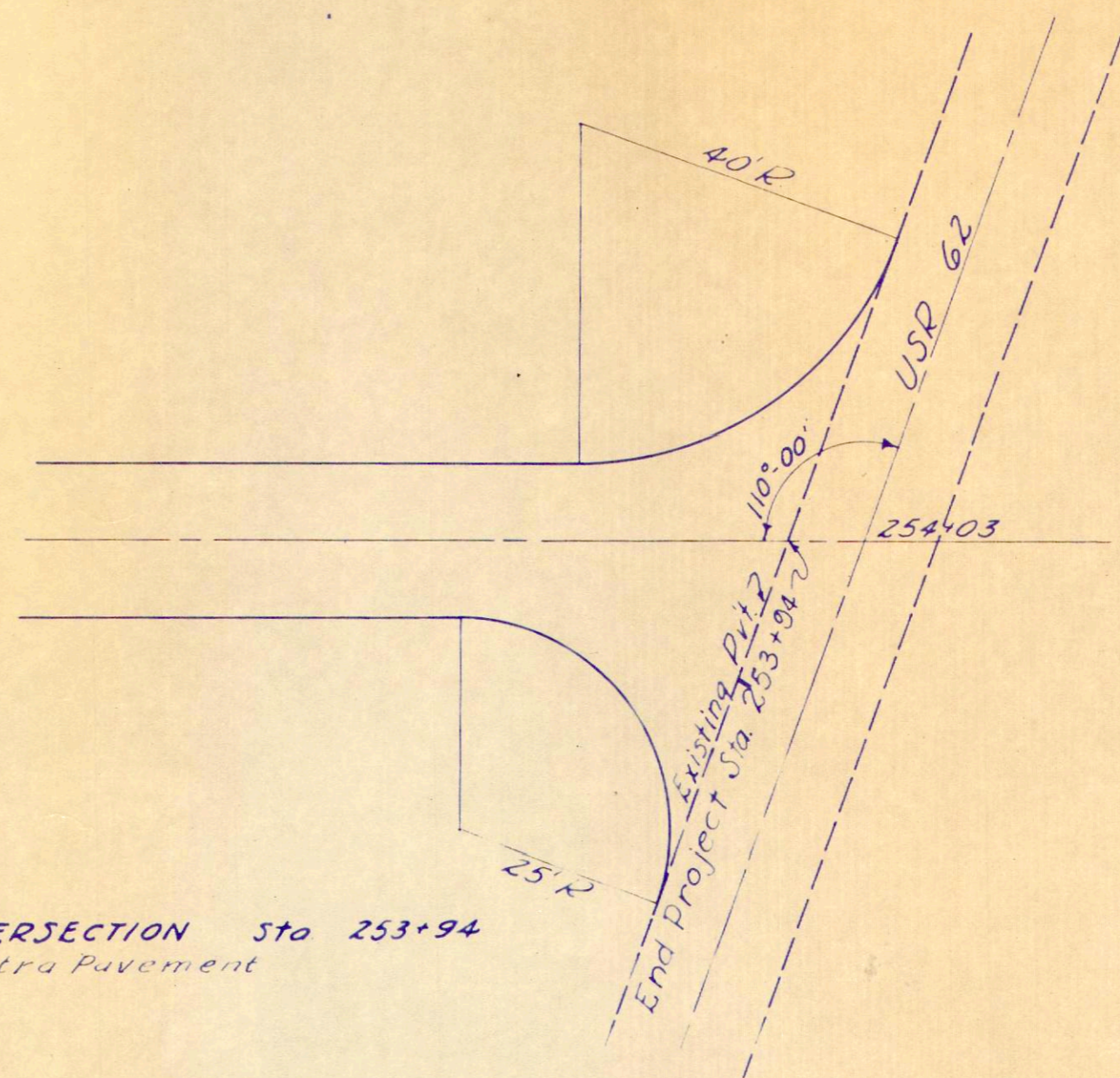
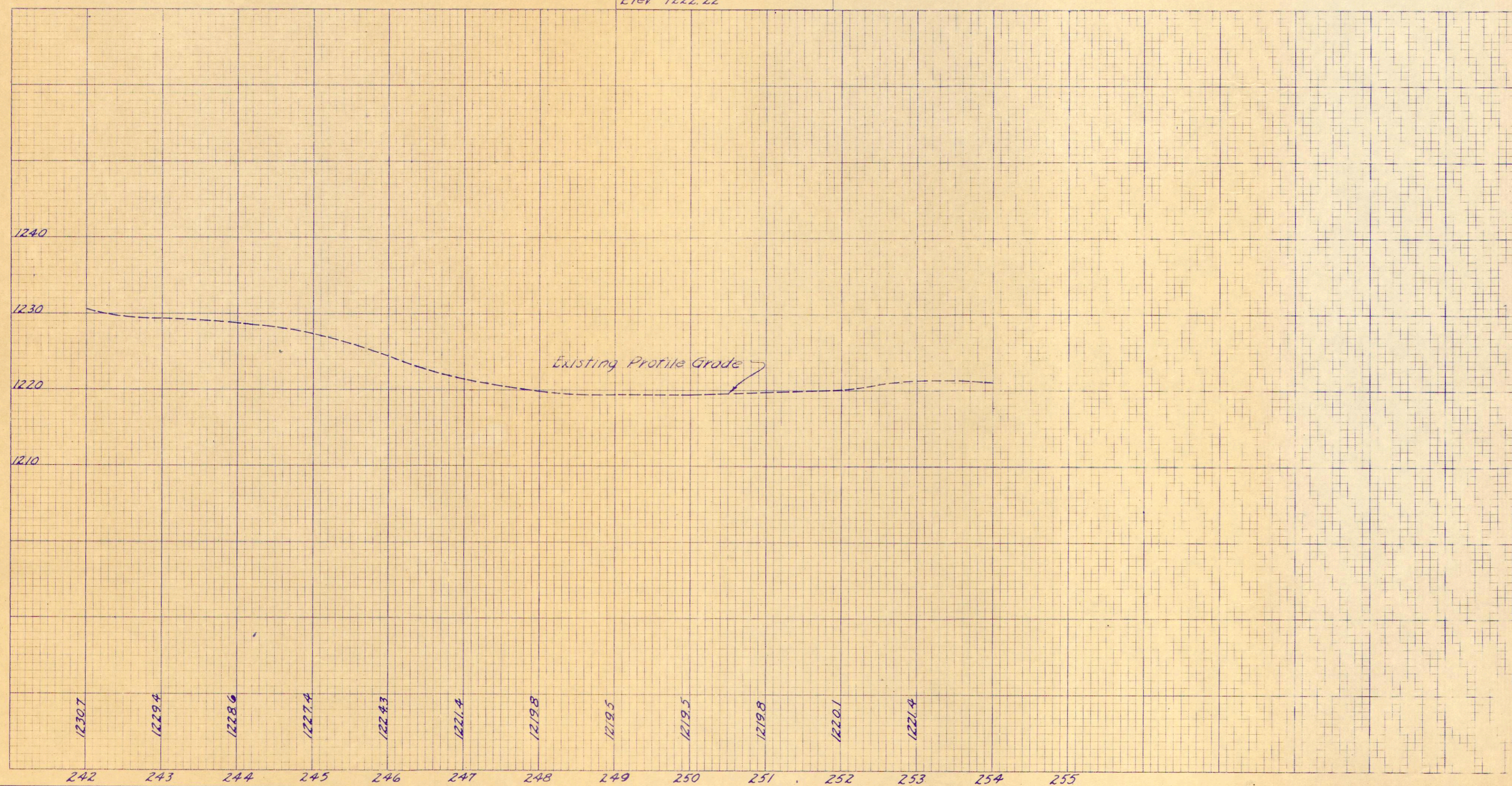
S-506(1)

NOTE: Marker to be furnished and erected on left by State Forces before acceptance of the project.

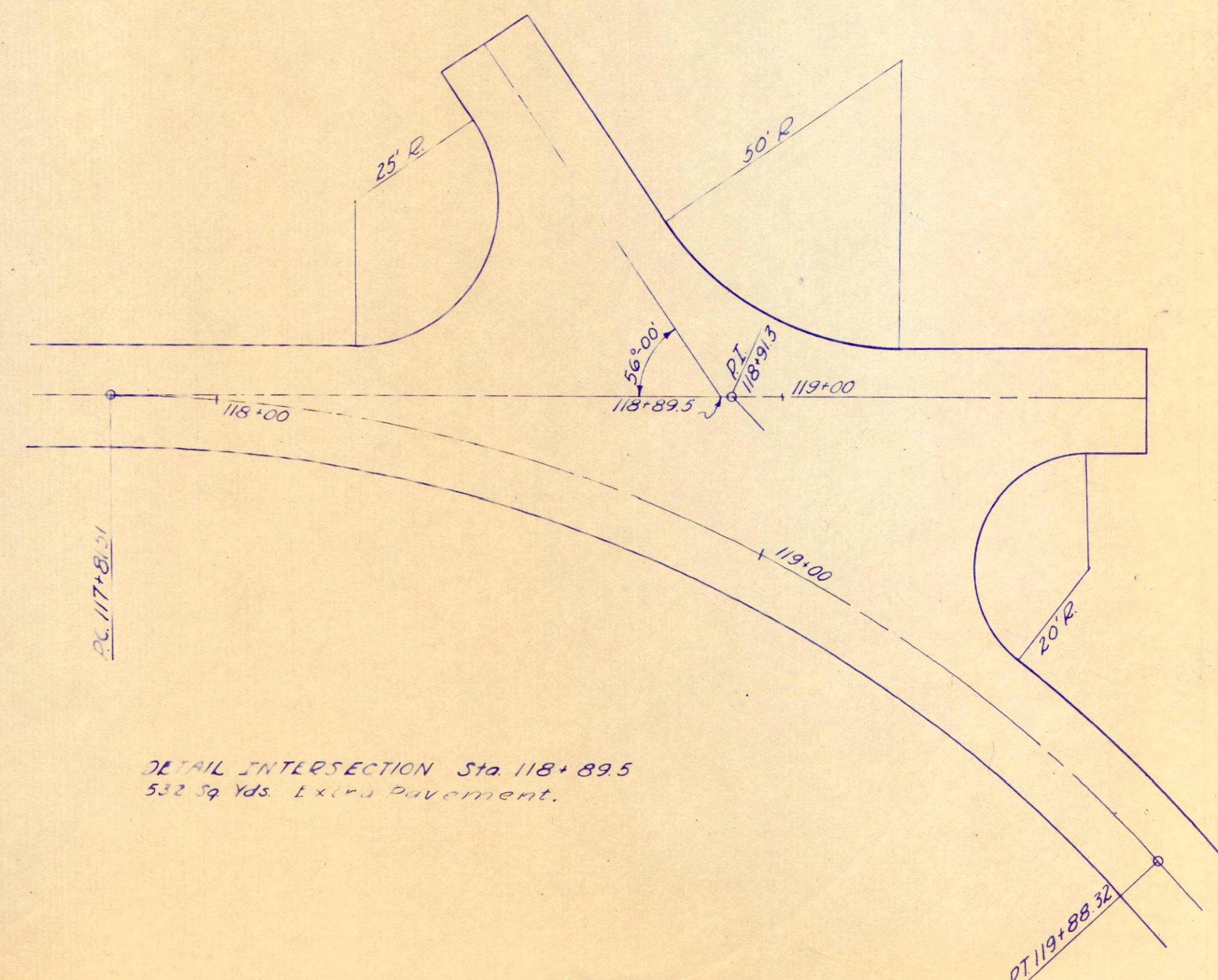


DETAIL INTERSECTION Sta 253+94
49 Sq Yds. Extra Pavement

B.M. Spike in Power Pole
to Rt of Sta. 253+25
Elev 1222.22



DETAIL INTERSECTION Sta. 209+63.3
362 Sq Yds. Extra Pavement



DETAIL INTERSECTION Sta 118+89.5
532 Sq Yds. Extra Pavement.