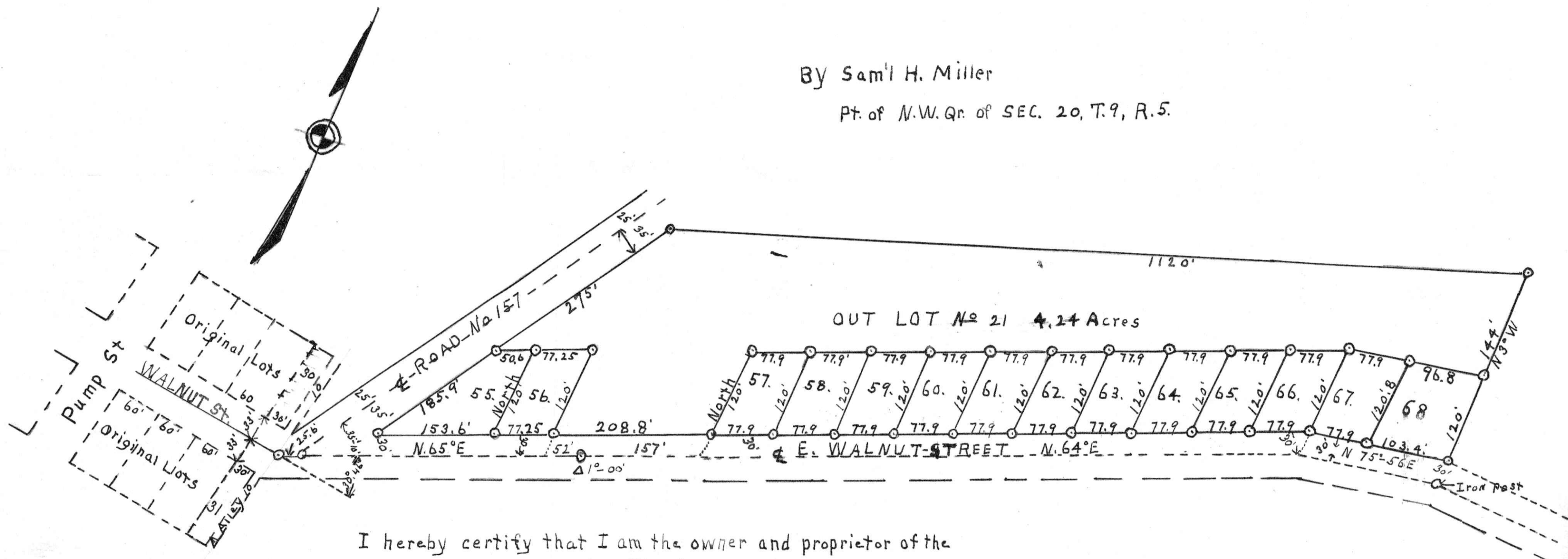


PLAT OF  
ADDITION To the Village of WALNUT CREEK  
Formerly NEW CARLISLE -  
HOLMES COUNTY, OHIO.

By Sam'l H. Miller

Pt. of N.W. Qr. of SEC. 20, T. 9, R. 5.



I hereby certify that I am the owner and proprietor of the lands hereon shown, that this Plat is true and correct and that the ground shown for Streets is hereby dedicated for public use  
Signed this 13<sup>th</sup> day of August, 1927.

*Samuel H. Miller,*  
Proprietor.

This Addition of inlots to the Village of Walnut Creek is hereby approved Aug. 15<sup>th</sup> 1927

*H. H. Allison.*  
*J. A. Mullet.*  
*G. W. Hanna.*

County Commissioners.

I hereby certify that this Plat is true and correct as surveyed and Platted by me this 5<sup>th</sup> day of Aug 1927.

*N. L. Reidenbach,*  
Surveyor.

Received Sept. 26<sup>th</sup>, 1927, at 10<sup>30</sup> A.M.  
Recorded AUG. 31<sup>st</sup>, 1928.

ROSE C. IMP. CO. RECORDER.

Transferred SEP. 21, 1927.

F. E. AULTMAN, CO. AUDITOR.