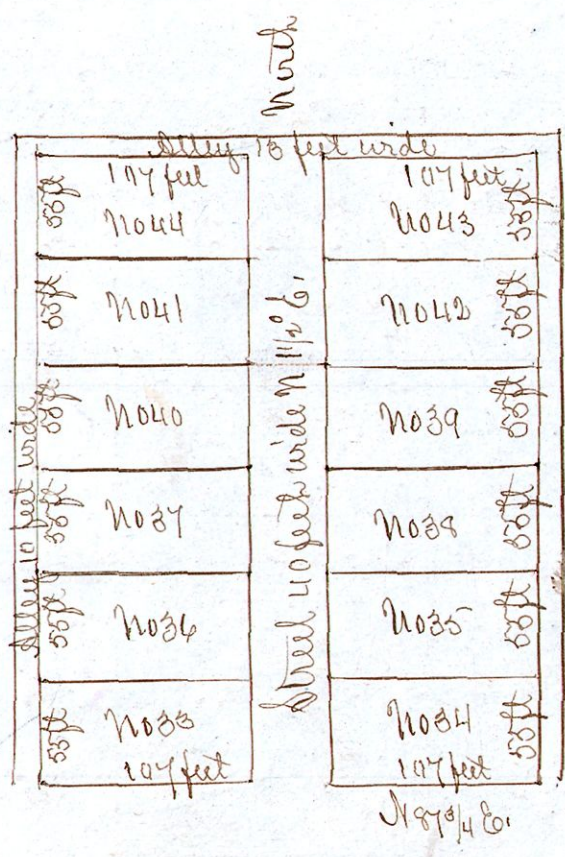


R. S. Bitchfield add of Lots to Millerburg 3<sup>d</sup> addition.



Scale 100 feet to the inch.

I do hereby certify that the above is a correct plat of the lots situated on part of the north part of lots No. 46 in the 1<sup>st</sup> gr. Sp. Sp. No. 9 of range No. 7 of the Connecticut western reserve school lands, the same being Bitchfield 3<sup>d</sup> addition to the town of Millerburg Adams county Ohio and a continuation on the north of his 3<sup>d</sup> addition.  
Sept 6<sup>th</sup> 1892

W. H. Robinson, Surveyor.

R. S. Bitchfield, Proprietor

Received and Recorded Sept 6<sup>th</sup> 1892  
J. M. McDonald