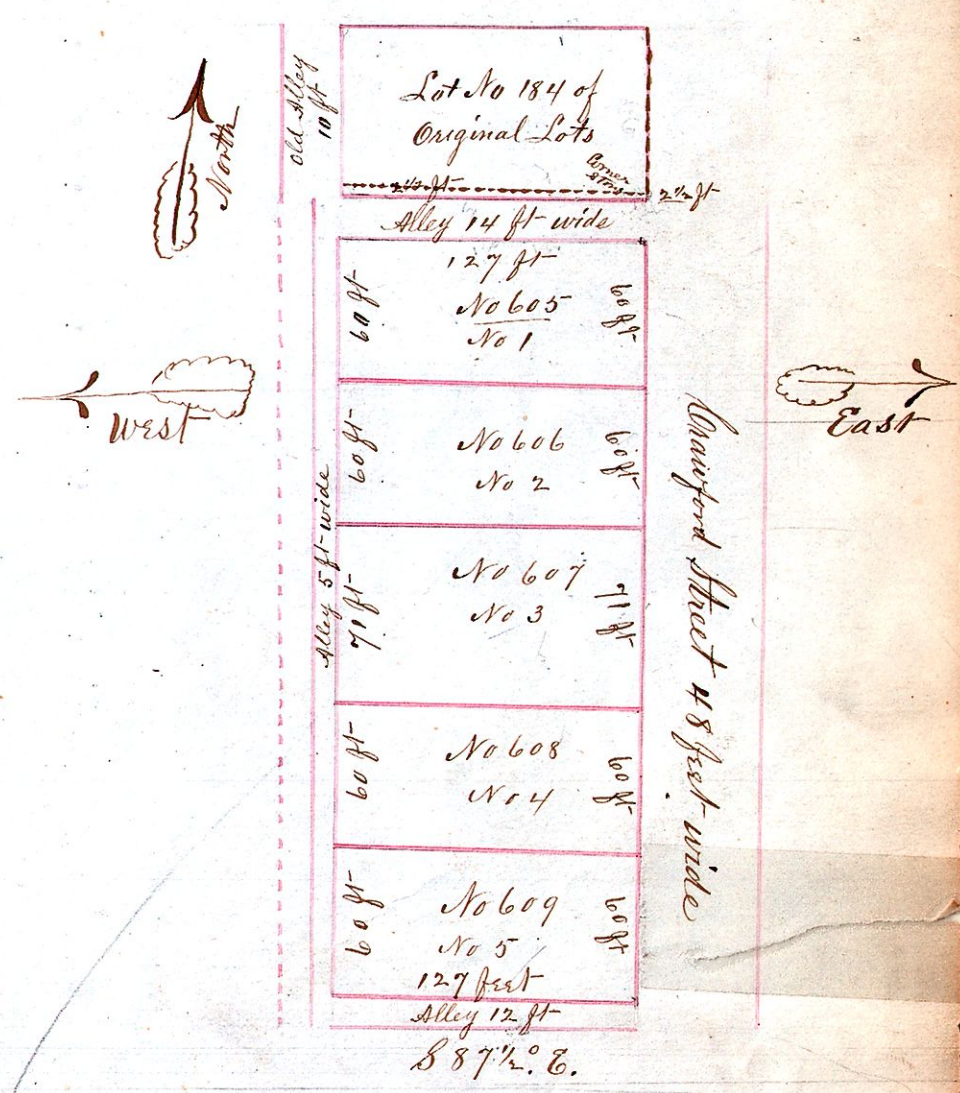


# George Schnorr's 2<sup>d</sup> Addition of In Lots to the Town of Millerburg.



The north east corner of lot 605 is 16 1/2 feet south of the standard corner stone located on the south east corner of In Lot No 184 of the original lots of Millerburg Ohio

Stone planted at the north east corner of lot No 1. from which to make future surveys I certify the above to be a correct plat of lots in George Schnorr's 2<sup>d</sup> addition of In lots to the town of Millerburg Holmes County Ohio, the same being located immediately west of Schnorr's extension of Crawford Street and of the east part of lot 32, in John Dargles 2<sup>d</sup> addition of lots to the town of Millerburg Ohio November 25<sup>th</sup> 1878. H. H. Robinson, Surveyor  
The State of Ohio } George Schnorr proprietor

Holmes County ss Before me a notary in and for said county personally appeared the above named George Schnorr and acknowledged the above plat of lots street and alley to be correct and that he desires the same to be recorded as George Schnorr's 2<sup>d</sup> addition of In lots to the town of Millerburg Holmes County Ohio Hamilton H. Robinson Notary Public  
Nov 25 1878

I certify that the common Council of the Incorporated Village of Millerburg approve the above and give their consent to its becoming an addition to the town of Millerburg as above platted  
Nov 25<sup>th</sup> 1878  
S. G. Barton  
Village Clerk

Received Nov 26<sup>th</sup> 1878

Received Nov 28<sup>th</sup> 1878

J. D. Shurplin Recorder