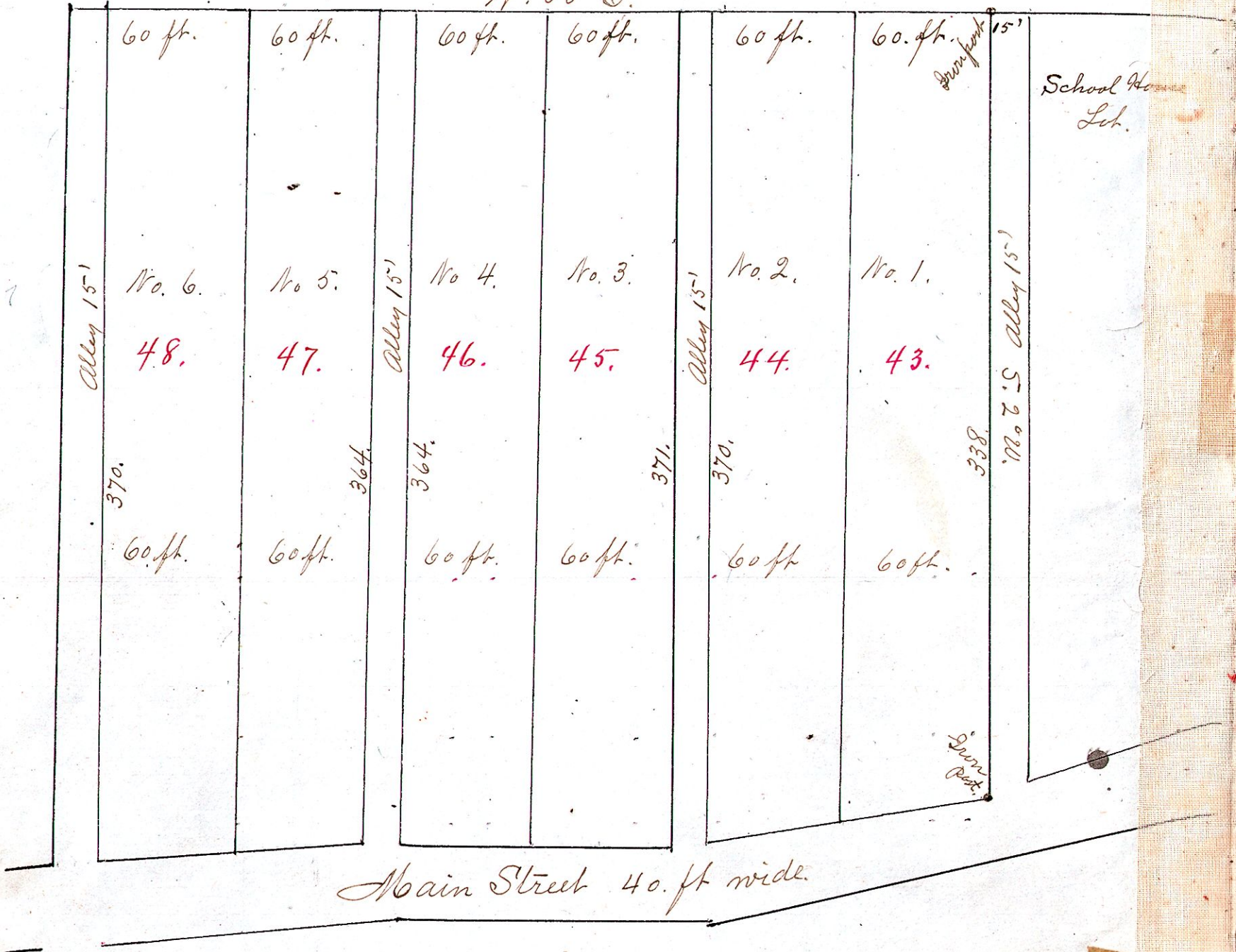




N. 88° E.



The above lots are located on the South East quarter of section 26, in Township 20 of Range 15, commencing 15 feet west of the North west corner of the School Home Lot in Lakeville, and running as indicated on plat. The Lots are 60 feet wide, with parallel lines leading South to the north line of the public Street or Road. The north line of road to be the south line of the lots, regardless of distances marked on the map. The figures in red represent tax numbers.

Iron posts are planted at the east corner of Lot No. 1, from which to make future surveys. I hereby certify the above to be a correct plat of the lots and alleys of J. B. & S. P. Kopp's addition of ten Lots to the Village of Lakeville in Holmes County Ohio.

We the undersigned acknowledge that we are the proprietors of the within platted Lots and Alleys
 June 21st 1909. H. H. Robinson Notary Public. J. B. Kopp S. P. Kopp.

I hereby certify that I have caused the within lots to be appraised, and have the same on the Tax Duplicate

Received for record at 3.45 P.M. June 26th 1909.
 Recorded June 29th 1909.
 Henry Lange Recorder.

By A. Jordan
 County Auditor.