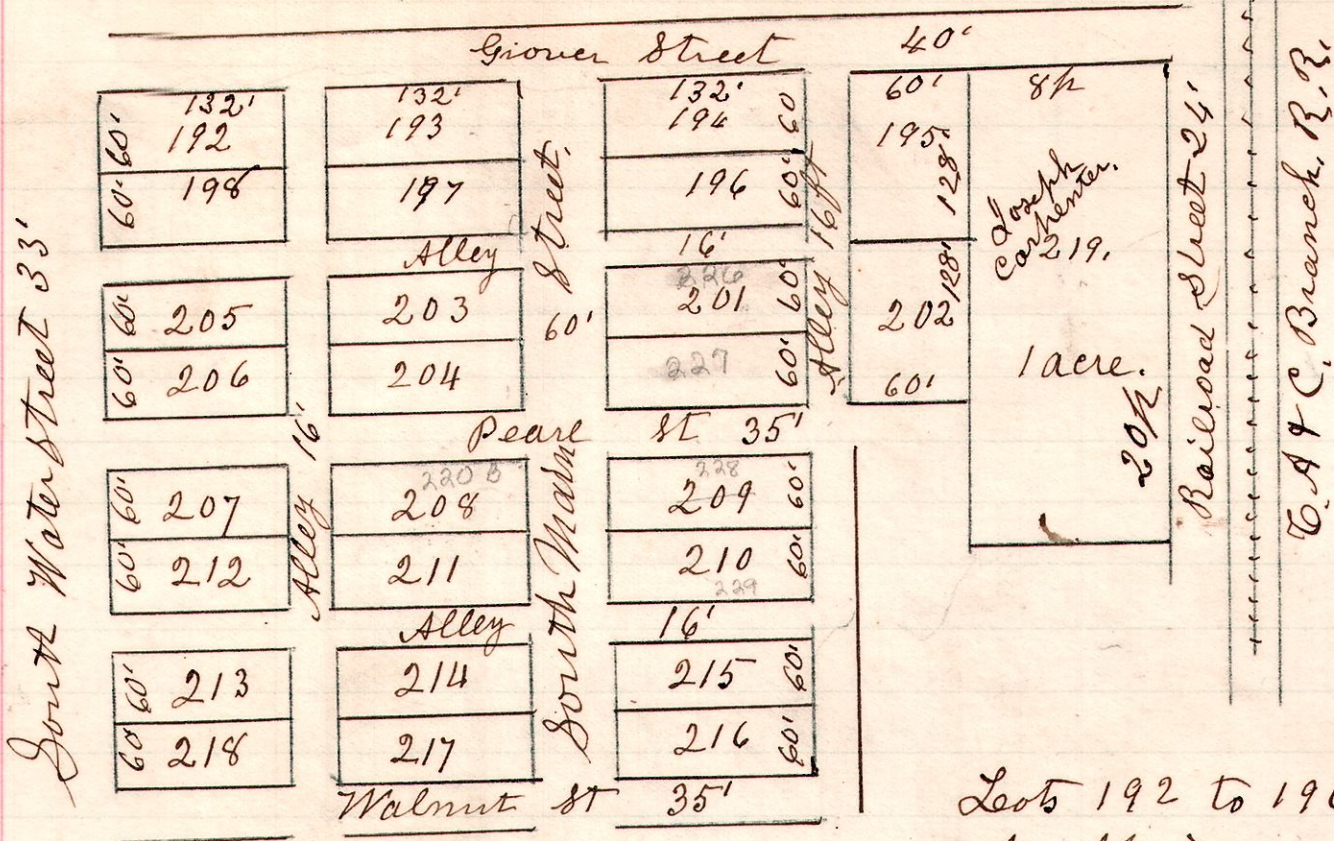


Killbuck
Village

627



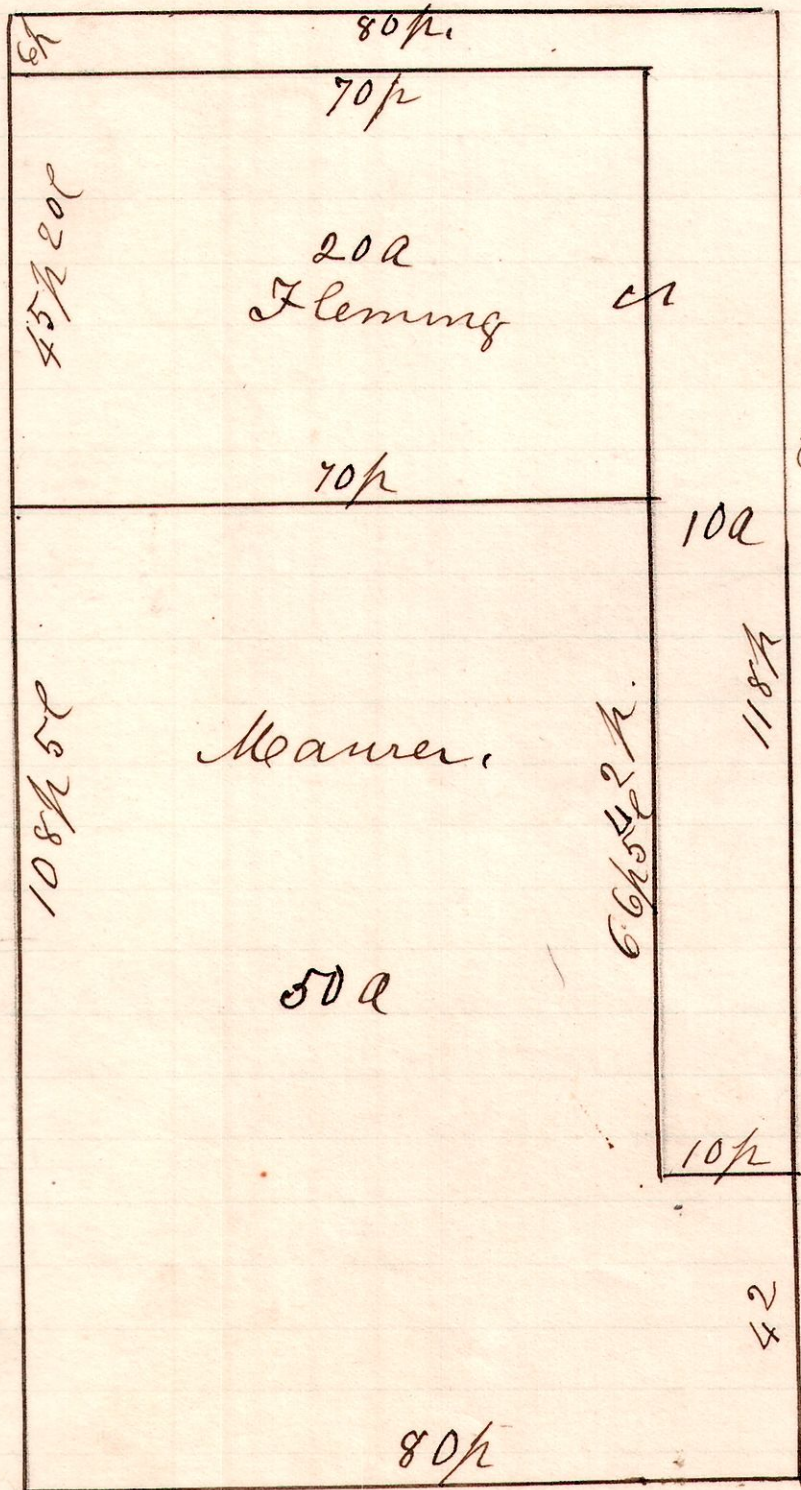
Lots 192 to 196, were laid
out April 11th 1905.

Joseph & Manelva Carpenter's addition of lots
to the village of Killbuck, November 26th 1906.

H. H. Robinson
Co Surveyor

628

14 17 15



A survey made for
Nicholas Mauer,
being the East half
of the South East
Quarter of Sec 15
T₁₇ S₁₇ of Range 14.

November 1st 1907.

H. H. Robinson
County Surveyor