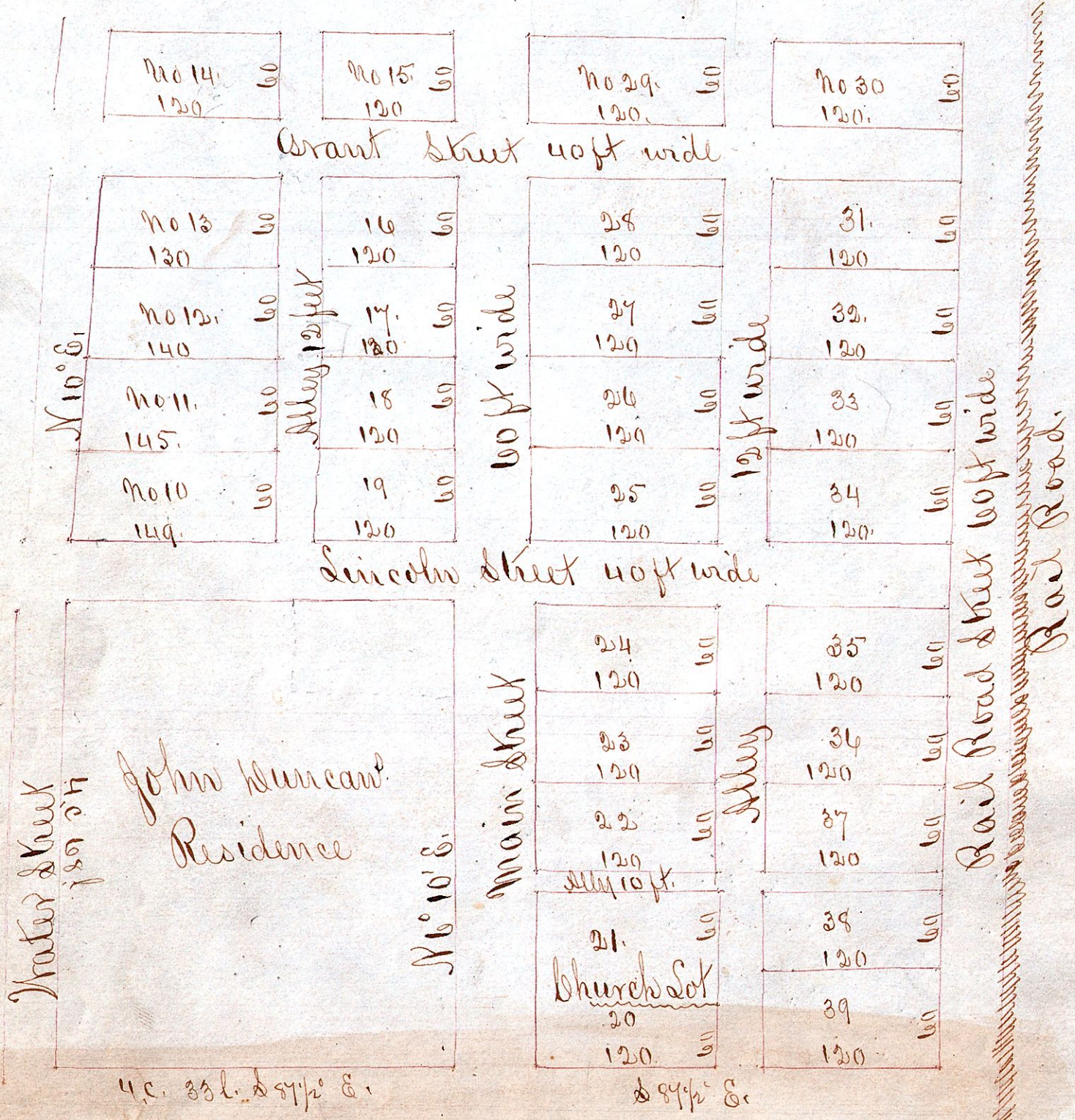


# Duncan's 2<sup>d</sup>. Addition to the village of Oxford.

Sots no 15, 16, 17, 18, 19 are full lots 120ft long.



Commencing the survey at the south west corner of the M & Church at a stake, the true line found by running the sec line east and west. Main Street runs N 6° 10' East and parallel with the Rail Road; and east & west the streets and Sots all of which their bearing are S 87 1/2° E, and north and south the streets and alleys and Sots all run N 6° 10' E except Water <sup>street</sup> which bears N 10° E.

The above addition is in Sec 6 Township 5, Range 5. It is hereby certified that the above plat is correct. This 20<sup>th</sup> day of August 1843. Joshua Spooner, County Surveyor.

Received for record January 27<sup>th</sup> 1844. Recorded January 29<sup>th</sup> 1844  
 W. B. McDowell, Recorder