

**Paint Township  
4th Qtr. Lot 33  
T-10 N, R-5 W  
Holmes County, Ohio**

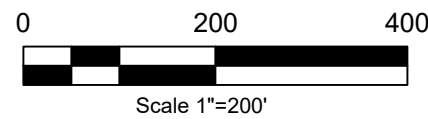
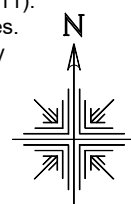
SURVEYED FOR: Nate Shrock

**REFERENCES:**

Deeds as shown

Plat Vol. 19 Page 4417  
Plat Vol. 19 Page 944  
Plat Vol. 19 Page 326  
Plat Vol. 19 Page 1509  
Plat Vol. 19 Page 4942  
Plat Vol. 19 Page 5176  
Plat Vol. 17 Page 213  
Plat Vol. 12 Page 268  
Plat Vol. 19 Page 1058  
Plat Vol. 19 Page 4300

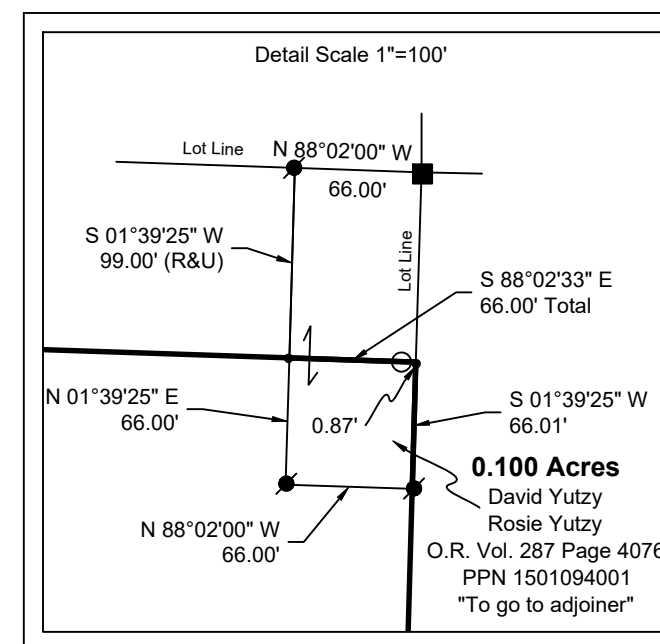
Basis of Bearing from Ohio State Plane  
Coordinate System, North Zone, NAD 83 (2011).  
Distances shown hereon are ground distances.  
To obtain grid distances multiply distances by  
scale factor of 0.999920793



**MASTER PLAT The purpose of this survey.**

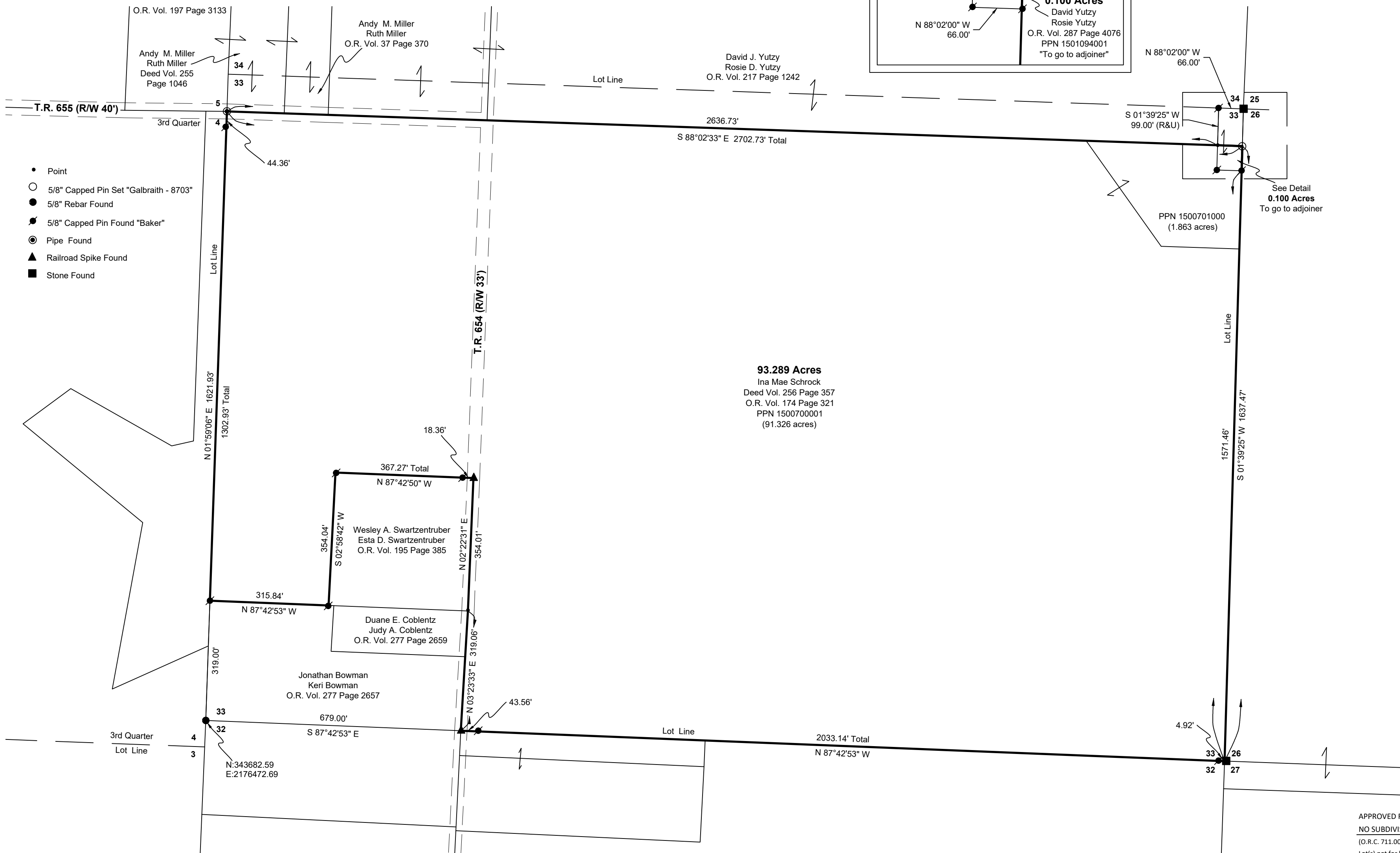
**Action 1)** Convey 0.100 acres to adjoining.

**Action 2)** Convey 93.289 acres.



202400001569  
B: 19 P: 5269  
FILED FOR RECORD IN  
HOLMES COUNTY, OH  
ANITA HALL, COUNTY RECORDER  
05/01/2024 02:55 PM  
SMALL PLAT . 40.00  
PAGES: 1

*ORV 288 Pg 4834*  
*ORV 288 Pg 4837*



- Point
- 5/8" Capped Pin Set "Galbraith - 8703"
- 5/8" Rebar Found
- 5/8" Capped Pin Found "Baker"
- ⊙ Pipe Found
- ▲ Railroad Spike Found
- Stone Found

**93.289 Acres**  
Ina Mae Schrock  
Deed Vol. 256 Page 357  
O.R. Vol. 174 Page 321  
PPN 1500700001  
(91.326 acres)

**0.100 Acres**  
David Yutzy  
Rosie Yutzy  
O.R. Vol. 287 Page 4076  
PPN 1501094001  
"To go to adjoining"

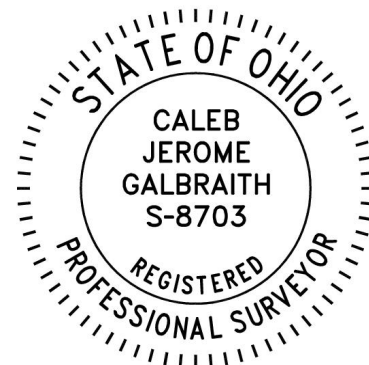
PPN 1500701000  
(1.863 acres)

Pioneer Surveying & Services, LLC.  
5434 Township Road 377  
Millersburg, Ohio 44654  
Phone: 330-231-0497  
Email: caleb@pioneersurveyingandservices.com

I certify this survey to be correct to the best of  
my knowledge.

*Caleb Galbraith*

Caleb Jerome Galbraith P.S. 8703  
Date: March 13, 2024  
Job ID: 3224-P2  
Drawn By: CMB



APPROVED FOR TRANSFER ONLY  
NO SUBDIVISION PLAT REQUIRED  
(O.R.C. 711.001 & 711.131)  
Lot(s) not for building unless  
approved by Board of Health  
HOLMES CO. PLANNING COMMISSION  
By AO Date 4/16/2024



**Plat Approved**  
Holmes County Map Office  
4/16/2024 MM