

**Village of Baltic
Clark Township
S.W. Qtr. Sec. 25
T-8N, R-4W
Holmes County, Ohio**

SURVEYED FOR: Tammy and Albert Gutheridge

REFERENCES:

Deeds as shown

Plat Vol. 19 Page 4897
Plat Vol. 16 Page 353
Plat Vol. 16 Page 284

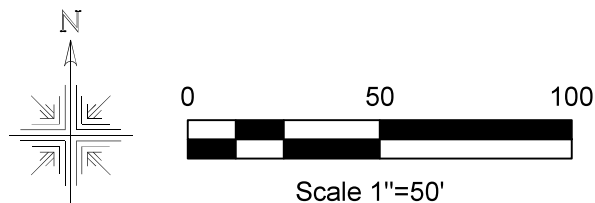
Basis of Bearing from Ohio State Plane
Coordinate System, North Zone, NAD 83 (2011).
Distances shown hereon are ground distances.
To obtain grid distances multiply distances by
scale factor of 0.9999905963

MASTER PLAT The purpose of this survey.

Action 1) Convey 0.581 acres.

Action 2) Convey 1.054 acres.

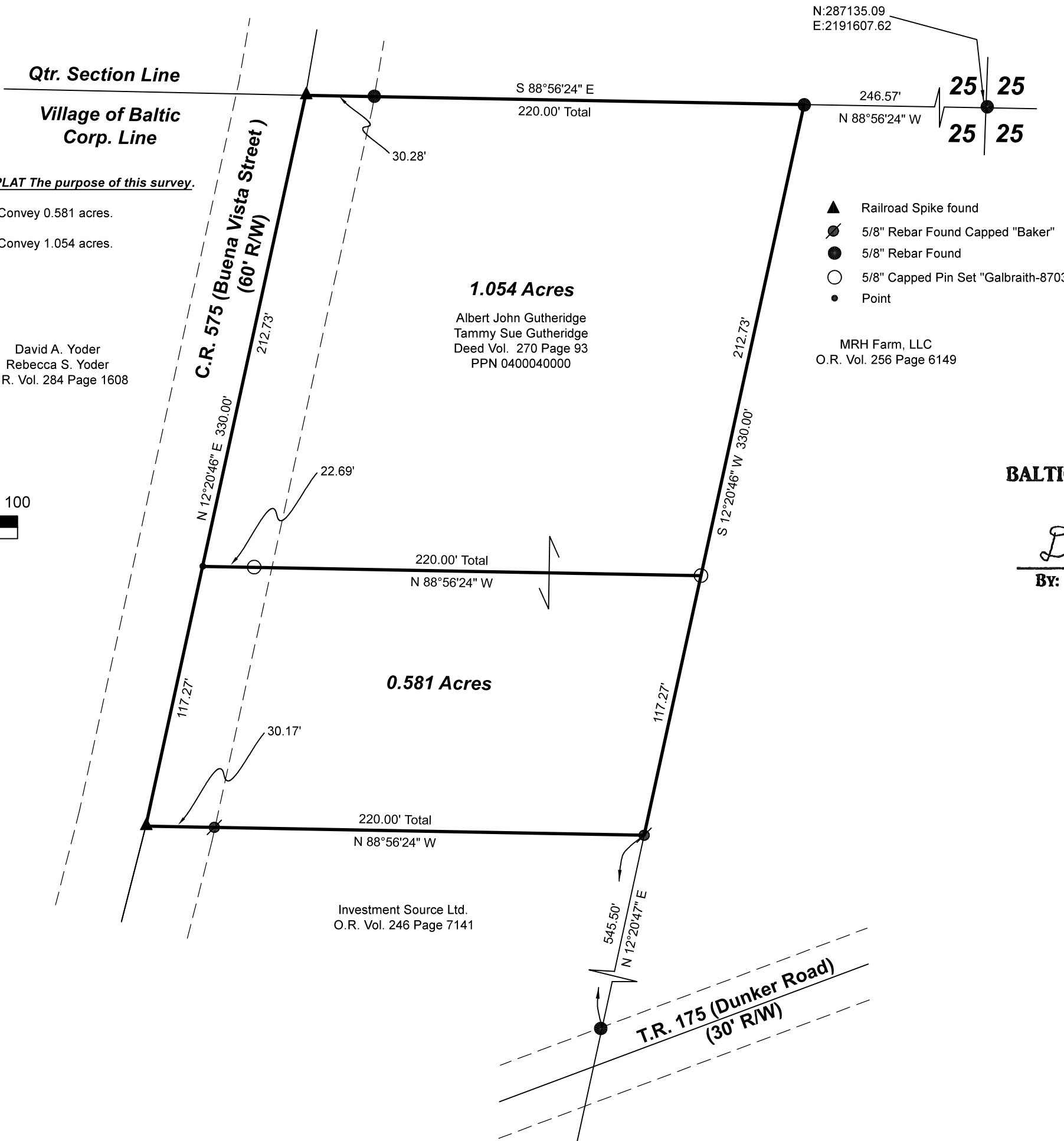
David A. Yoder
Rebecca S. Yoder
O.R. Vol. 284 Page 1608



I certify this survey to be correct to the best of my knowledge.

Caleb Galbraith

Caleb Jerome Galbraith P.S. 8703
Date: Feb. 22, 2024
ID: 3924
Pioneer Surveying & Services, LLC.
5434 Township Road 377
Millersburg, Ohio 44654
Phone: 330-231-0497
Email: caleb@pioneersurveyingandservices.com



N:287135.09
E:2191607.62

202400001428

B: 19 P: 5260
FILED FOR RECORD IN
HOLMES COUNTY, OH
ANITA HALL, COUNTY RECORDER
04/22/2024 01:34 PM
SMALL PLAT . 40.00
PAGES: 1

ORV 288 Pg 4301
ORV 288 Pg 4305

**APPROVED BY THE
BALTIC PLANNING COMMISSION**

Douglas Plyler
BY: DOUGLAS PLYLER, MAYOR

APPROVED FOR TRANSFER ONLY
NO SUBDIVISION PLAT REQUIRED
(O.R.C. 711.001 & 711.131)
Lot(s) not for building unless approved by Board of Health
HOLMES CO. PLANNING COMMISSION
By AO Date 3/27/2024



Plat Approved
Holmes County Map Office
3/20/2024 MM