

BERLIN TOWNSHIP
 4TH QTR., LOT 5
 T-9 N; R-6 W
 HOLMES COUNTY, OHIO

SURVEYED FOR: HOLMES LUMBER



SCALE: 1"=100'

- 5/8" REBAR FOUND UNLESS OTHERWISE NOTED
- ▲ R.R. SPIKE FOUND
- ⊙ MAG NAIL FOUND
- MAG NAIL SET
- 5/8" REBAR SET WITH I.D. CAP I.D. CAP MARKED "BAKER SURVEYING LLC"

REFERENCES

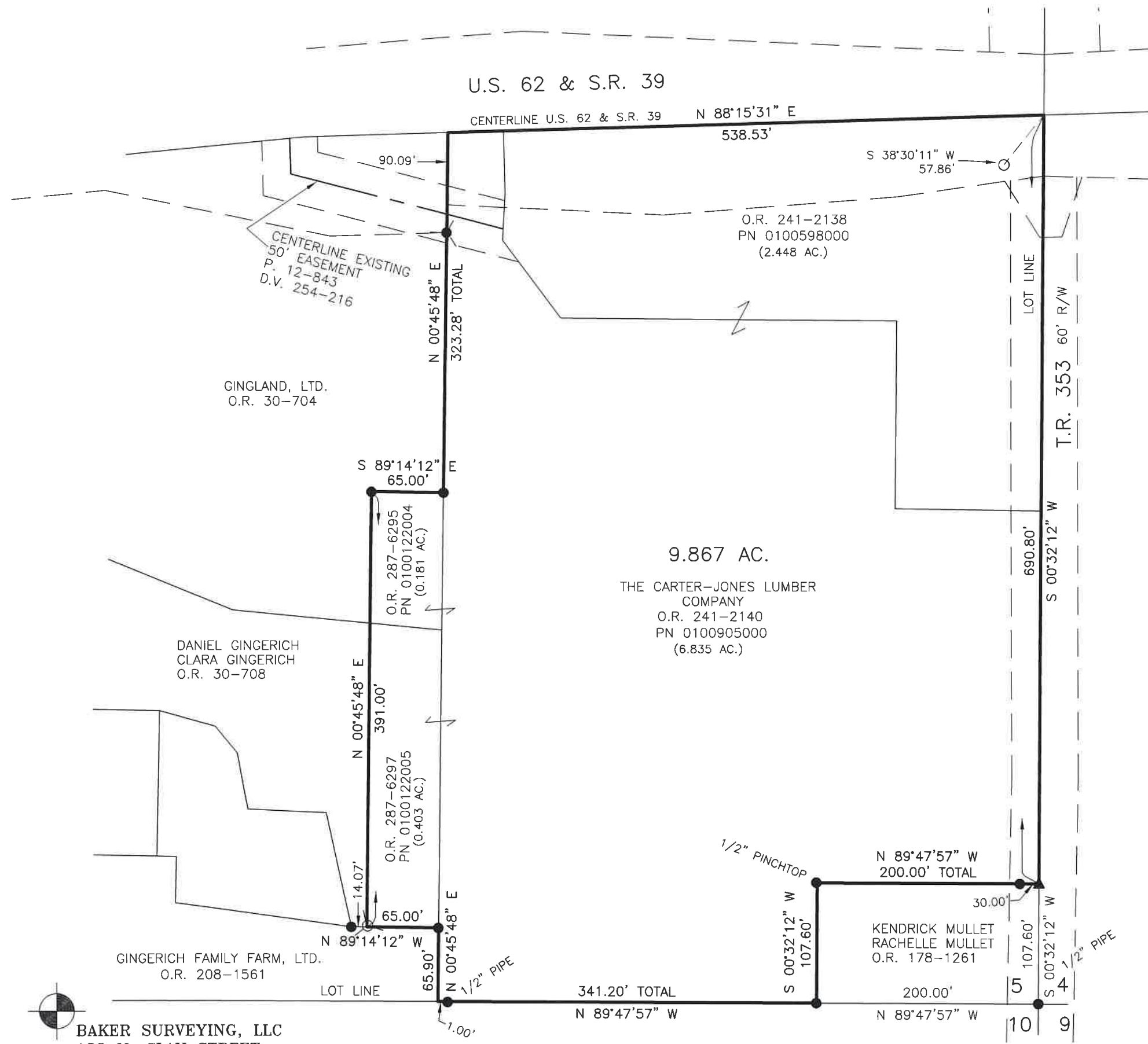
- O.R. VOL. 30 PAGE 704
- O.R. VOL. 30 PAGE 708
- O.R. VOL. 241 PAGE 2140
- O.R. VOL. 241 PAGE 2138
- O.R. VOL. 287 PAGE 6295
- O.R. VOL. 287 PAGE 6297
- PLAT VOL. 17 PAGE 90
- PLAT VOL. 18 PAGE 591
- PLAT VOL. 19 PAGE 1444
- PLAT VOL. 19 PAGE 5206

BASIS OF BEARINGS FROM OHIO STATE PLANE COORDINATE SYSTEM, NORTH ZONE, N.A.D. 83, 2011 ADJUSTMENT



I CERTIFY THIS SURVEY TO BE CORRECT TO THE BEST OF MY KNOWLEDGE.

AL
 AARON L. GERBER P.S. 8379
 DATE: MARCH 1, 2024
 VJD
 FILE NAME: WORK5\S-94-24\CNK



BAKER SURVEYING, LLC
 138 N. CLAY STREET
 MILLERSBURG, OHIO 44654
 PH. 330-674-4788
 EMAIL: bakersurveying@gmail.com

202400001168

B: 19 P: 5250
 FILED FOR RECORD IN
 HOLMES COUNTY, OH
 ANITA HALL, COUNTY RECORDER
 04/01/2024 03:00 PM
 SMALL PLAT . 40.00
 PAGES: 1

ORV 288 Pg 2938

APPROVED FOR TRANSFER ONLY
 NO SUBDIVISION PLAT REQUIRED
 (O.R.C. 711.001 & 711.131)
 Lot(s) not for building unless
 approved by Board of Health
 HOLMES CO. PLANNING COMMISSION
 By TS Date 3/26/2024



Plat Approved
 Holmes County Map Office
 3/26/2024 Rg